

# Children's Caucus: Wisconsin's Opportunity to Transform Early Care and Education

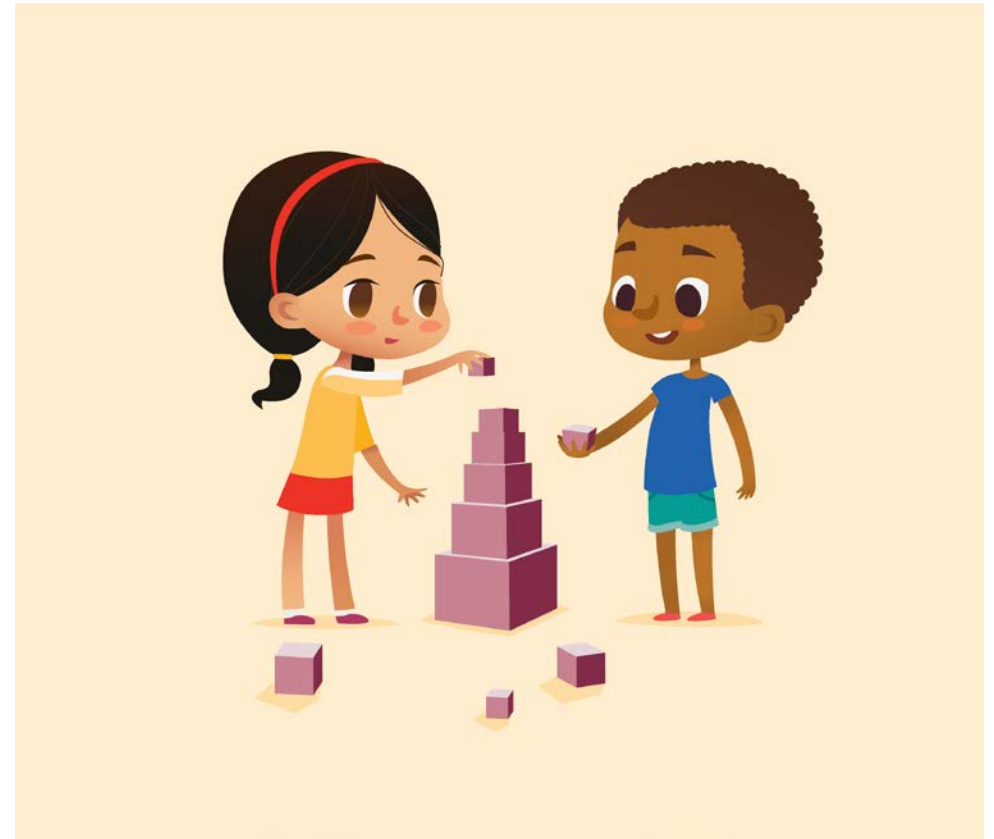
*Tuesday, February 25, 2020*



Wisconsin Department of Children and Families

# Presentation Overview

- Vision and Rationale
- Opportunities
  - Preschool Development Grant
  - WI Infant and Toddler Policy Project
  - 53206 Initiative
- Next Steps



# Current Landscape in Wisconsin

Equity & Inclusion

Accessibility

Affordability

Quality

Workforce



# Vision for B-5 Mixed Delivery System

All Wisconsin families will have access to high-quality, affordable, local early care and education opportunities

2023



# Aligning Opportunities

	Needs Assessment	Strategic Plan	Access	Affordability	Quality	Workforce
<b>PDG</b>	2020 (R1)	2020 (R1)	2020 (R1)	2020 (R1)	2020 (R1)	2020 (R1)
			2021-23 (R2*)	2021-23 (R2*)	2021-23 (R2*)	2021-23 (R2*)
<b>WI ITPP</b>		2019 (R1)	2020-23 (R2)	2020-23 (R2)	2020-23 (R2)	2020-23 (R2)
<b>53206</b>			2020 - ongoing	2020 - ongoing	2020 - ongoing	2020 - ongoing

\*Pending successful application



# Aligned System

Informed by communities & stakeholders and driven by needs assessment



Support the needs of  
the ECE workforce



Ensure state and local  
systems, policies and  
procedures are aligned  
and accessible to  
families

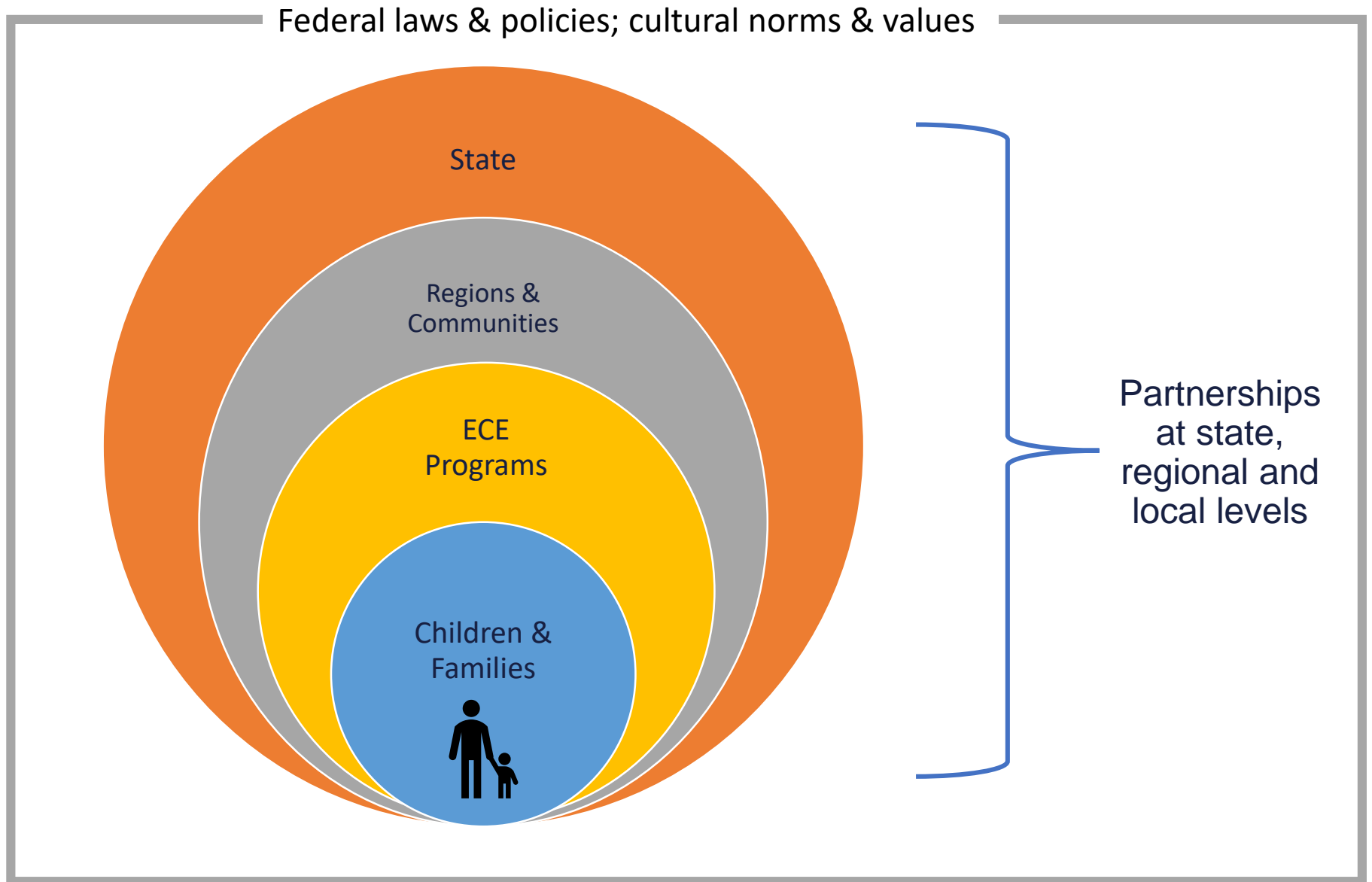


Promote social-  
emotional development  
and high-quality  
programming

Sensitive to needs of children, families and providers while measuring  
impact at regional and state levels



# Support Structure



# Regional Support Structure





# PDG Details

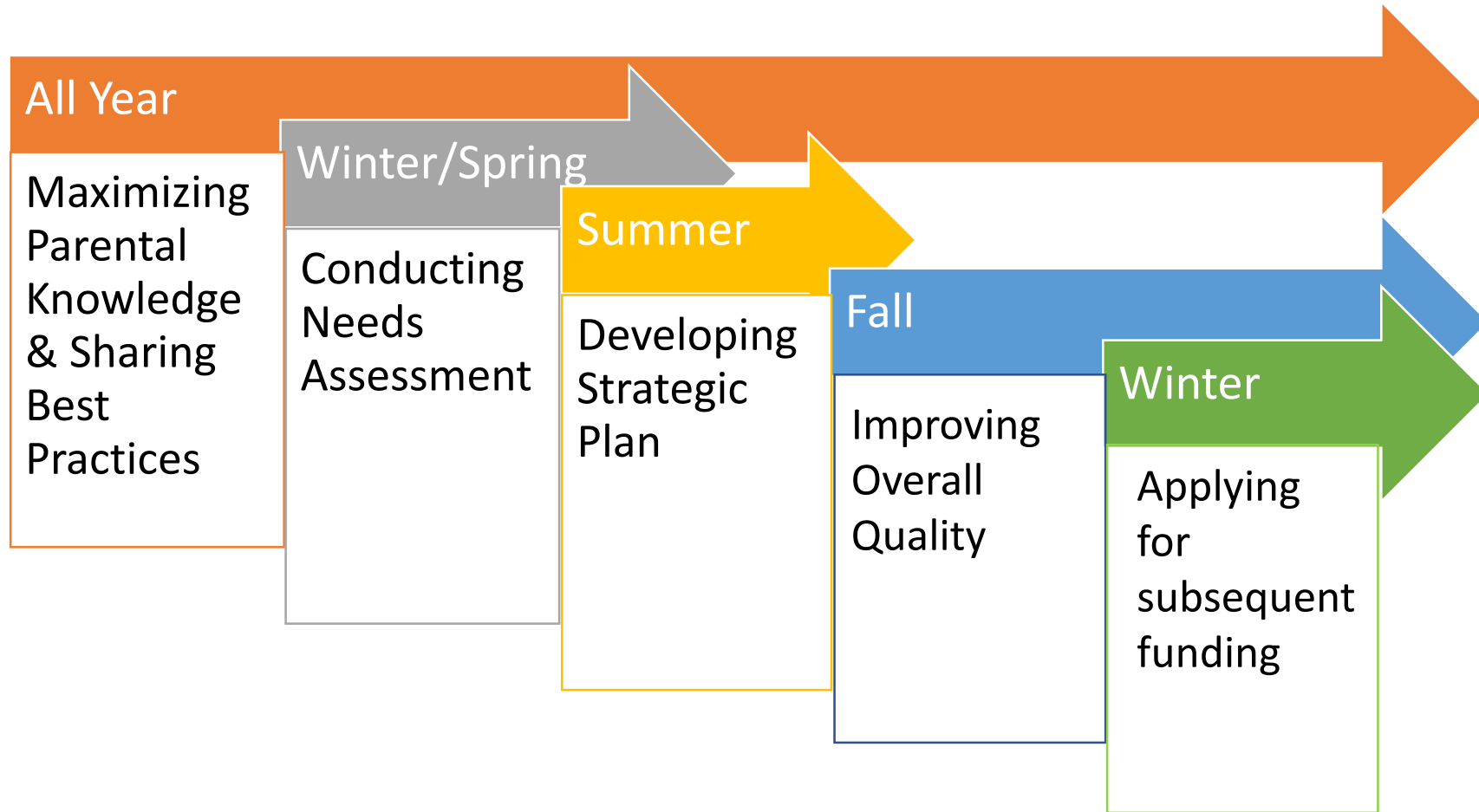
## Strengthening B-5 State System and Regional Networks of Support

### **Focus:** Birth-5 Mixed Delivery System

- ✓ Developing Needs Assessment
- ✓ Creating B-5 Statewide Strategic Plan
- ✓ Maximizing Parental Choice and Knowledge
- ✓ Sharing Best Practices
- ✓ Improving Overall Quality



# PDG Implementation Timeline: 2020



# Listening Sessions

Dates from February to  
April, 2020



# Aligning Opportunities: PDG + WI ITPP





Wisconsin Early Childhood Association



## **Wisconsin Infant Toddler Policy Project**

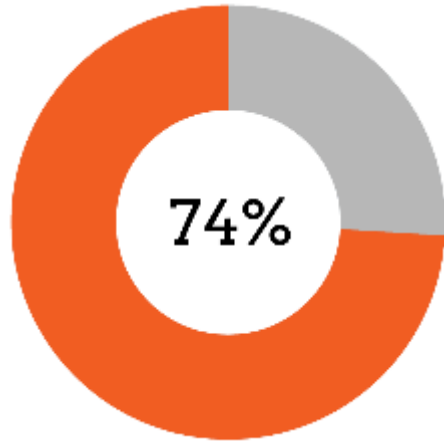
Legislative Children's Caucus  
Presented by: Jeremy Levin  
Rural Wisconsin Health Cooperative  
Member: WITPP  
State Collaborative Team

# WITPP

## A True Collaboration

Parents	Care providers	State, county, municipal and town government
Nonprofit and advocacy organizations	Philanthropies	Health care
Faith-based leaders	Private sector business	Workforce development

# WITPP: Parent Survey Results



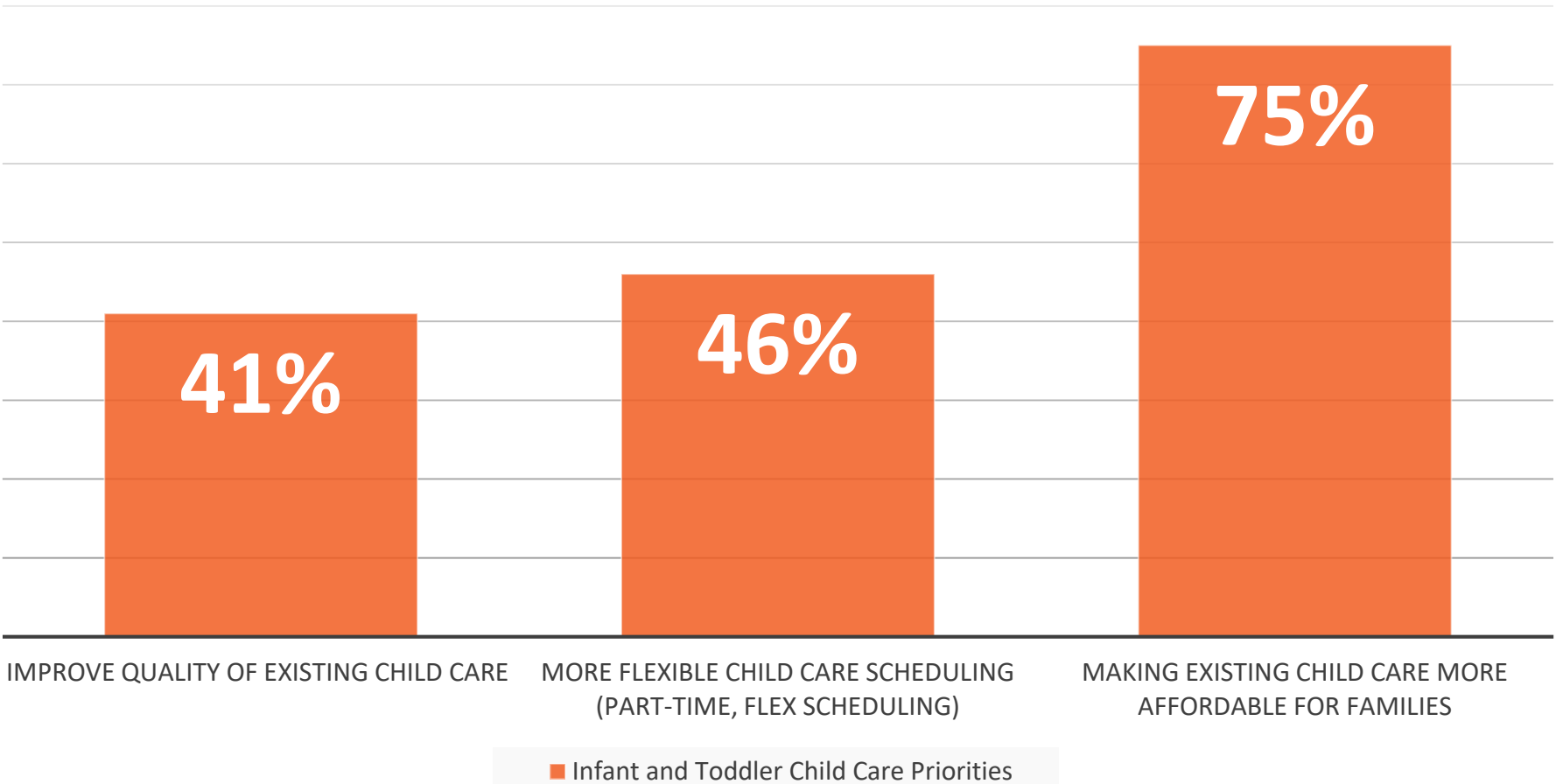
Strongly disagree or disagree with the statement that “parents have an easy time finding child care for infants and toddlers that meets their needs.”

Strongly agree or agree with the statement that “Center-based child care options for infants and toddlers cost too much in my community.”

79%

# WITTP Parent Survey Top Community Needs

## Infant and Toddler Child Care Priorities





# WITPP

To increase equitable access to high-quality ECE that supports the healthy development of all children, meets the needs of working parents in collaboration with a skilled and fairly-compensated workforce, our policies will focus on:

**ECE  
Workforce**

**Quality**

**Affordability**

**Access**



# WITPP Vision

Every low-income family with an infant and/or toddler will have equitable access to affordable, high quality, culturally and linguistically responsive early care and education that meets their family and employment needs and supports optimal child development and well-being. The early childhood education workforce will have the skills, training, and support to deliver high quality care and education with commensurate compensation.

# WITPP Key Goals

1. All low-income families with young children, and others who touch the lives of infants and very young children, have equitable access to the information and supports they need to promote optimal early childhood development and well-being.
2. Every low-income family with an infant and/or toddler will have equitable access to a range of affordable, high quality, culturally and linguistically responsive child care options that meet their family and employment needs
3. The early childhood workforce will have the skills, training, and support to deliver high quality care while receiving commensurate compensation

# WITPP Next Steps:

- WECA is anticipating a contract from Pritzker Children's Initiative in the coming weeks.
- WECA will hire a Business Engagement Director
- WECA will hire a Project Manager to manage plan implementation
- Will continue to work with State Collaborative Team
- Will launch an equity council for the project
- DCF will have a Prenatal to Three Coordinator to ensure alignment between WITPP and Preschool Development Grant





Wisconsin Early Childhood Association

Ruth Schmidt  
Executive Director  
608-729-1042

[Ruschmidt@wisconsinearlychildhood.org](mailto:Ruschmidt@wisconsinearlychildhood.org)

[wisconsinearlychildhood.org](http://wisconsinearlychildhood.org)



[@EarlyEdMatters](https://twitter.com/EarlyEdMatters)



[@wisconsinearlychildhood](https://www.facebook.com/wisconsinearlychildhood)



Search: [wisconsin-earlychildhood-education](https://www.linkedin.com/search/results/people/?keywords=wisconsin-earlychildhood-education)

