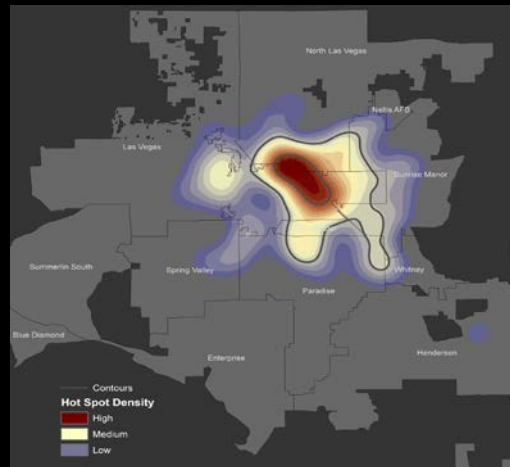


JUSTICE CENTER

THE COUNCIL OF STATE GOVERNMENTS

Collaborative Approaches to Public Safety

Justice Reinvestment



Michael D. Thompson

Director

Justice Center

Council of State Governments

October 2, 2007

Madison, Wisconsin

The logo for the Justice Center, featuring the words "JUSTICE" and "CENTER" in a blue serif font, separated by a gold star. Below this, "THE COUNCIL OF STATE GOVERNMENTS" is written in a smaller, gold serif font, and "Collaborative Approaches to Public Safety" is written in a blue italicized serif font.

JUSTICE ★ CENTER
THE COUNCIL OF STATE GOVERNMENTS
Collaborative Approaches to Public Safety

- **Non-profit, non-partisan membership association of state government officials**
- **Represents all three branches of state government**
- **Provides practical, nonpartisan advice informed by the best available evidence**
- **Support from the U.S. Department of Justice and private grantmakers such as The Pew Charitable Trusts**

National Projects

Report Preview | **Report of the Re-Entry Policy Council**
Charting the Safe and Successful Return of Prisoners to the Community

WWW.REENTRYPOLICY.ORG

A public/private partnership funded in part by the US Department of Justice, US Department of Labor, and US Department of Health and Human Services

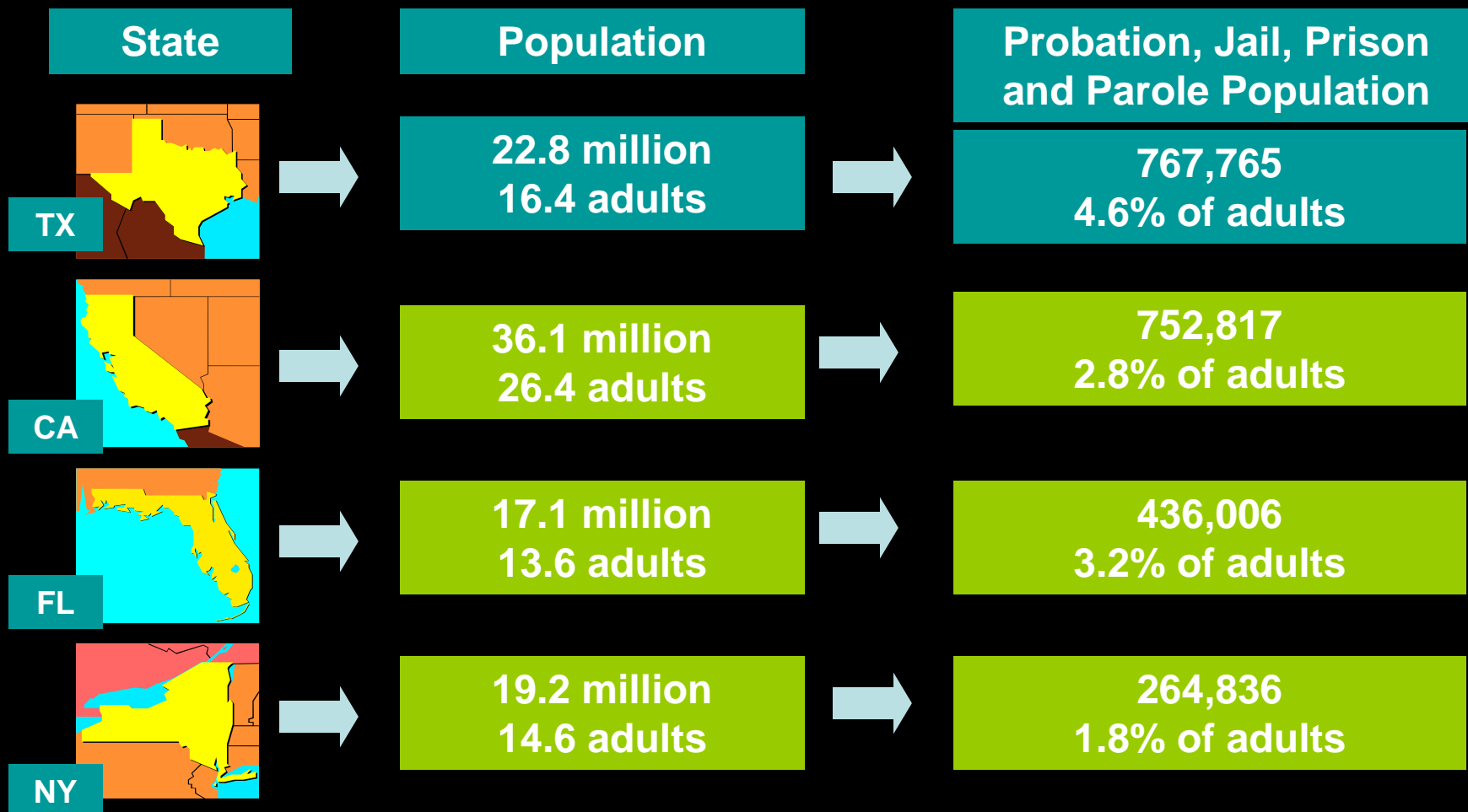
Criminal Justice / Mental Health Consensus Project

Project Overview



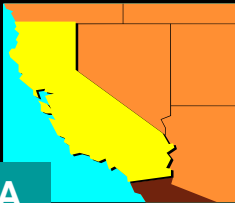

- **Justice Reinvestment: a strategy to increase public safety and to manage corrections spending**
- **Two case studies: Kansas and Texas**
- **Considerations for WI policymakers**

Incarceration Rates in 4 Large States



Sources: US Census 2005; BJS "Probation and Parole in US, 2005"; jail figures from BJS "Prison and Jail Inmates at Midyear 2005"; prison figures from BJS, Prisoners in 2005, November 06 report

Changes in Crime Rates

	Population	Incarceration Rate*	Crime Rate*
 TX	1980: 14,229,191 2005: 22,859,968 +61%	1980: 226 2005: 691 +206%	1980: 6,030 2005: 4,862 -19%
 CA	1980: 24,037,626 2005: 36,132,147 +50%	1980: 162 2005: 466 +188%	1980: 6,468 2005: 3,849 -40% 
 FL	1980: 9,746,324 2005: 17,789,864 +82%	1980: 242 2005: 499 +106%	1980: 6,821 2005: 4,716 -31% 
 NY	1980: 17,558,072 2005: 19,254,630 +10%	1980: 187 2005: 326 +74%	1980: 5,577 2005: 2,554 -54% 

Incarceration and Reported Index Crime Rate by FBI per 100,000 population

Source: Population US Census Historical Report; Crime, FBI Crime in US; Incarceration, BJS, Prisoners in US

Justice Reinvestment Strategy

- Step 1: Analyze the prison population and spending in the communities to which people in prison often return**
- Step 2: Provide policymakers with options to generate savings and increase public safety**
- Step 3: Quantify savings and reinvest in select communities**
- Step 4: Measure the impact and enhance accountability**

Justice Reinvestment: Key Funders



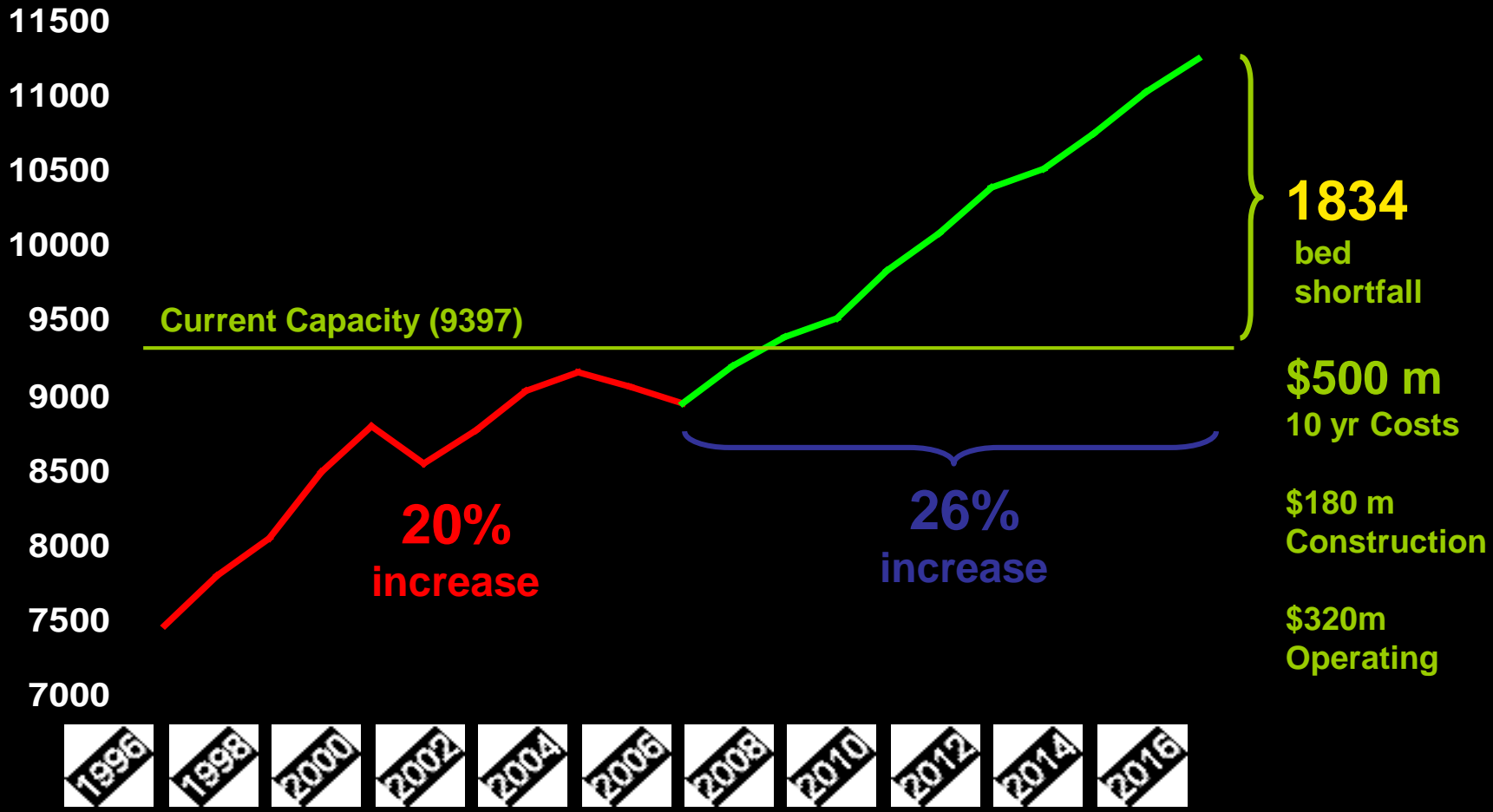
Participating States

- **Demonstrate bipartisan, bicameral, and interbranch interest**
- **Commit to using analyses constructively**
- **Provide access to data**



Kansas

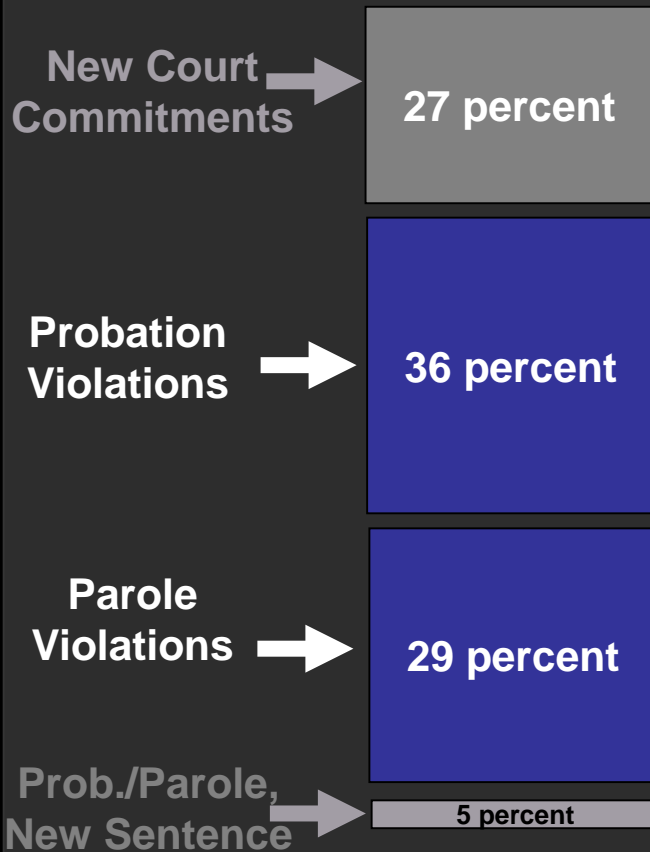
Prison Population Projection



Kansas

Recidivism a Key Driver

Prison Admissions FY2006



– 65 % of admissions

– 27 % of prison population

– Annual cost of \$53 million



Kansas

Focus on Reducing Recidivism Before & After Release

**Offenders in Need of
Vocational Education:
Program Participation &
Completion Prior to Release**

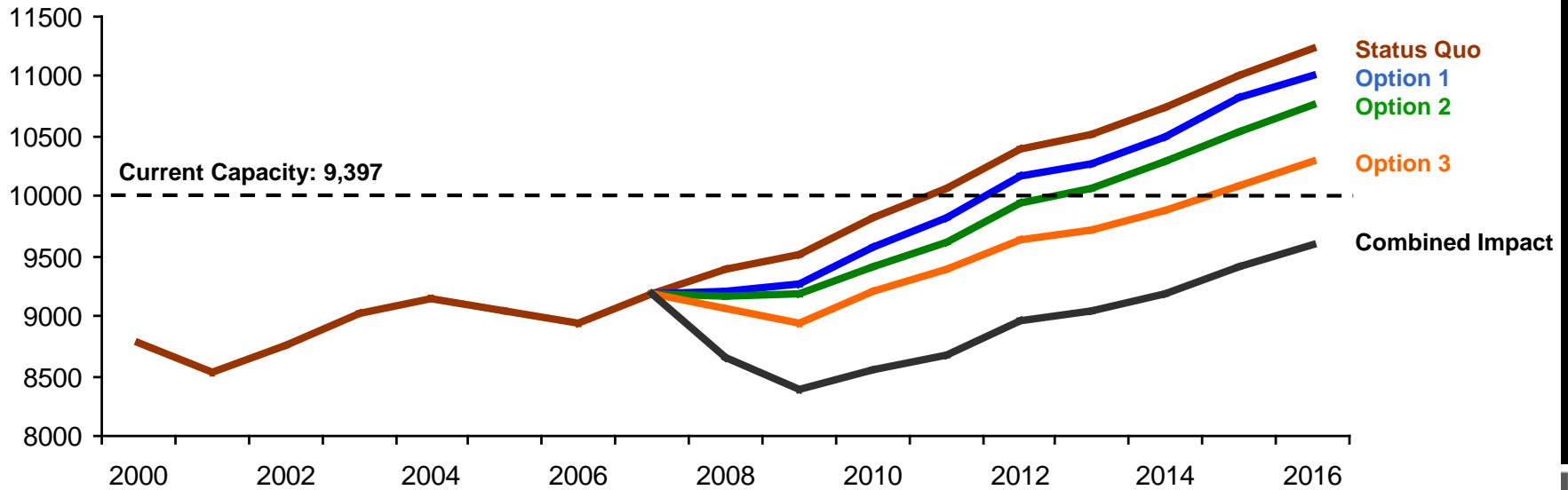


**Offenders in Need of
Substance Abuse Treatment:
Program Participation & Completion
Prior to Release**



Kansas: Options for Policymakers

FY2008-2016 (9 years) Projected Prison Population



POLICY OPTION	SAVINGS	OPERATING COSTS
1. Maintain recent reductions in the number of parole revocations at 90 per month	223	\$52 million
2. Reduce the number of probation/community corrections violators by 20 percent	465	\$97 million
3. Create a 10 percent "Risk Reduction Program Credit" for guideline offenders who successfully complete treatment, educational, and vocational programs before release	943	\$171 million
Combined Impact	1,631	\$320 million + \$177 million [AVERTED CONSTRUCTION COSTS] \$497 million



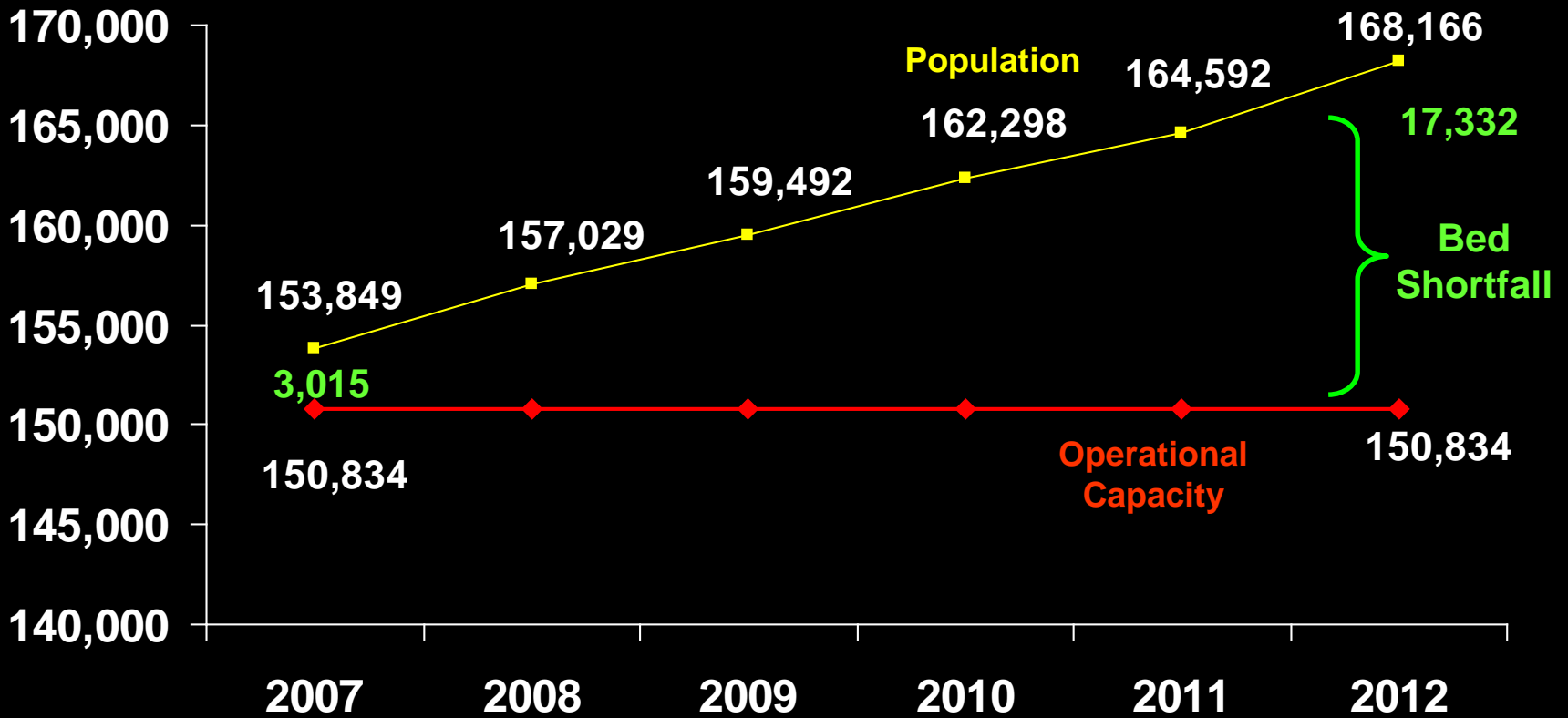
Kansas

Estimated Savings & Reinvestment

- **\$80 million in projected savings over the next 5 years**
- **\$4.5 million reinvested in community corrections grant program**
- **\$2.4 million reinvested in expanding in-prison and community-based program capacity**



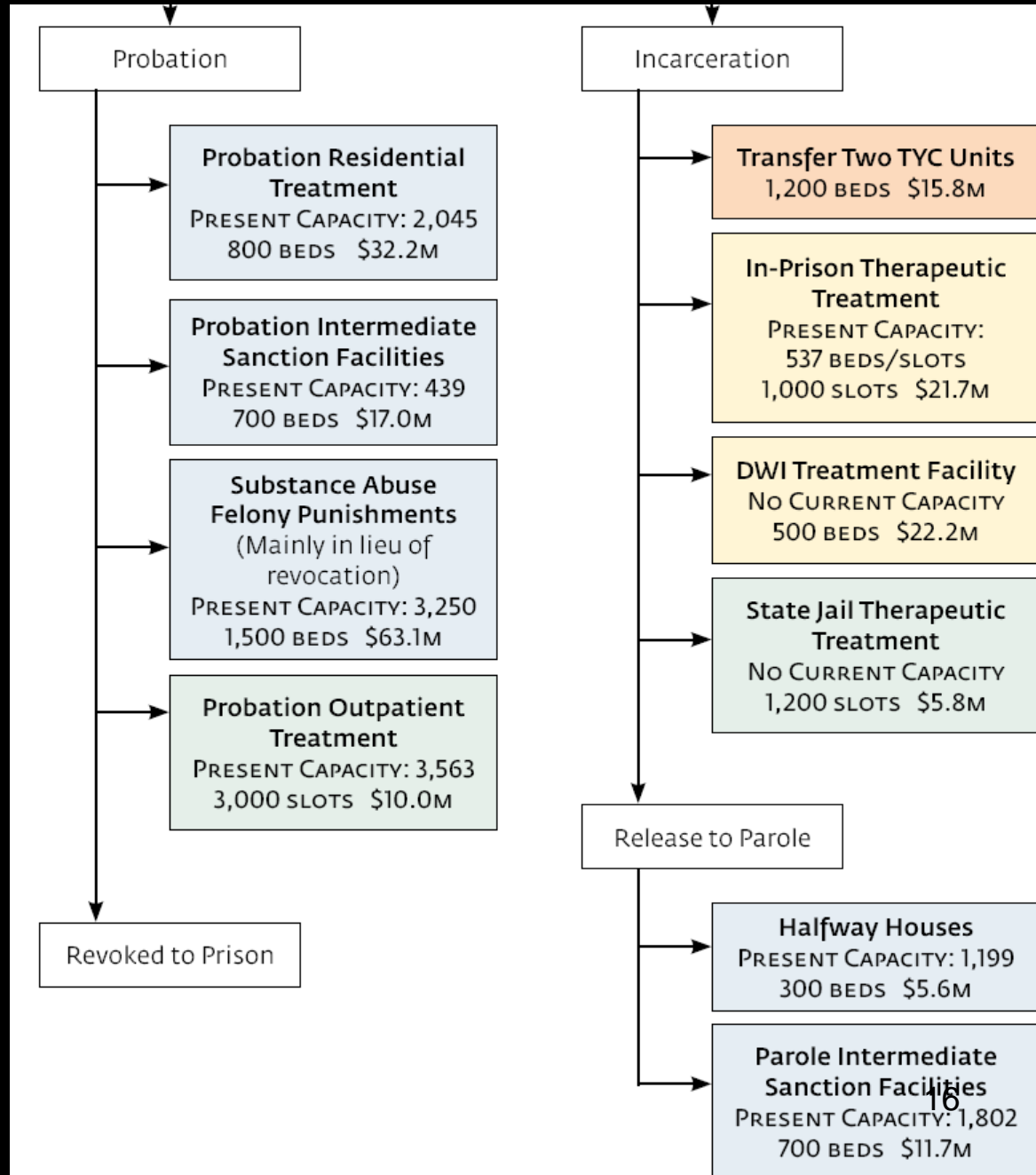
Texas Prison Population Projection



Source: Legislative Budget Board, June 06 and January 07, Adult and Juvenile Correctional Population Projections

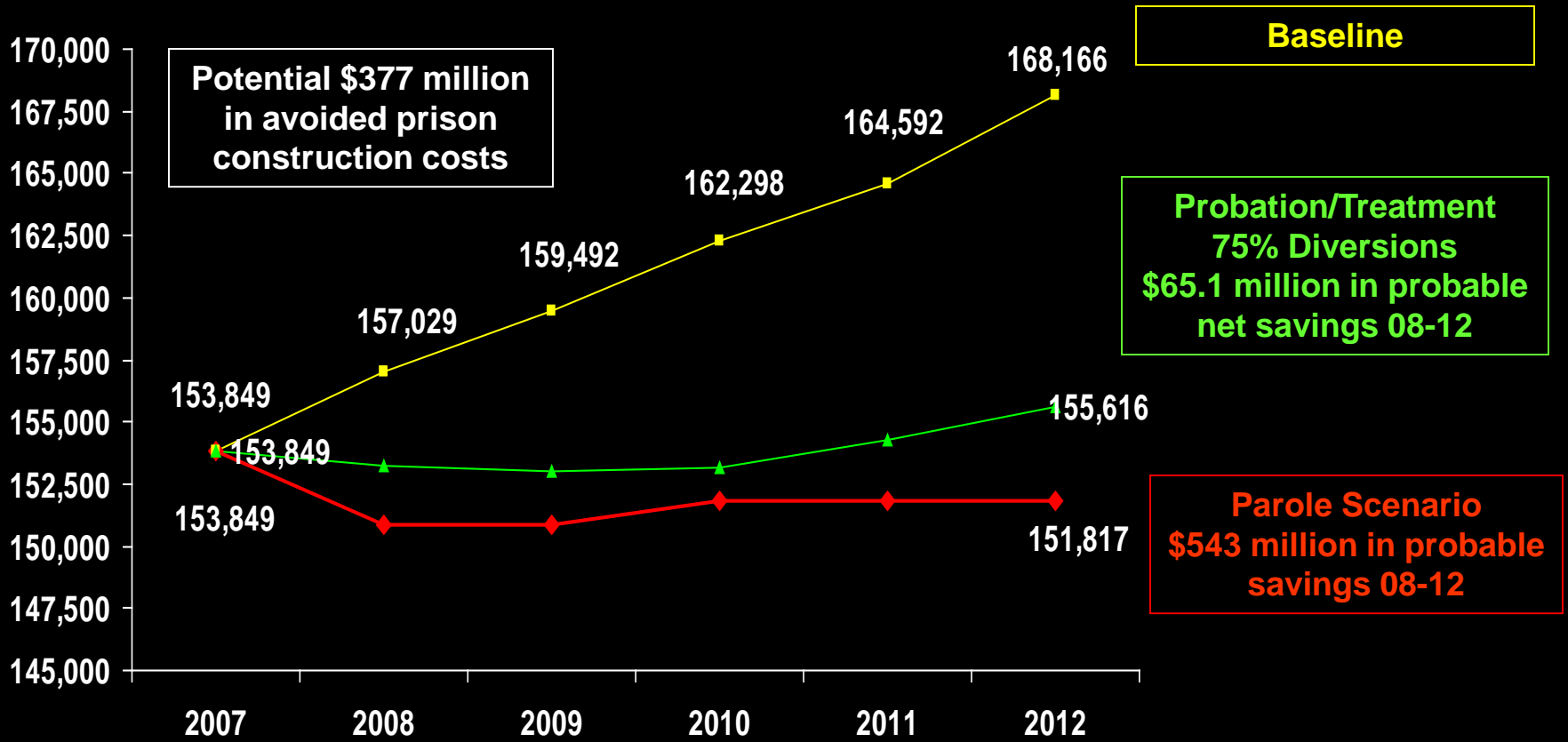


Expanding Capacity of Treatment & Diversion Programs





Texas Impact of Policy Options





Texas

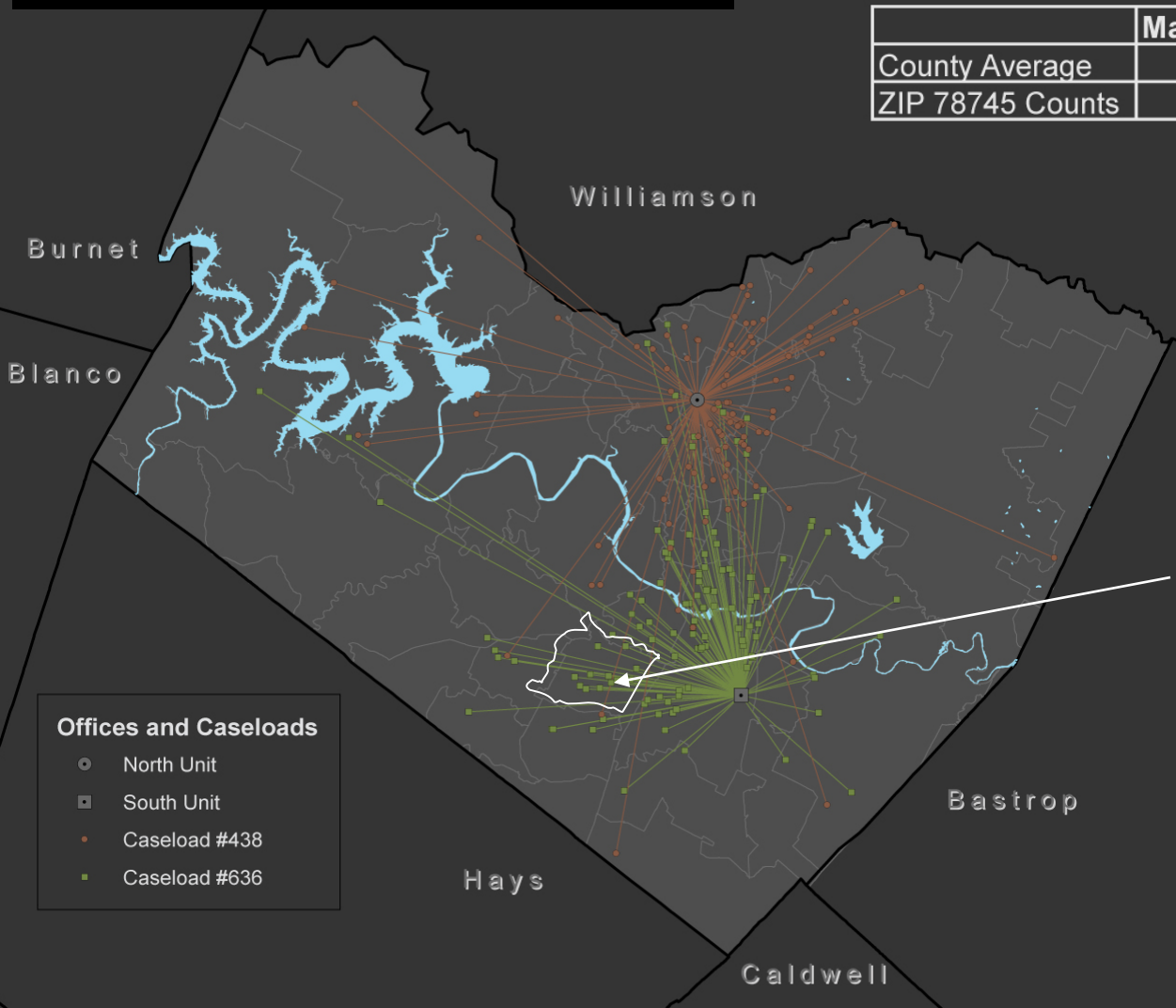
Estimated Savings & Reinvestment

- **\$451 million in projected savings over the next 2 years**
- **\$241 million to expand in-prison and community-based treatment and diversion programs**

Thinking About High Stake Communities Can Even Encourage a Better Utilization of Present Resources Like Probation Supervision

Austin, Travis County

	Maximum	Medium	Minimum	Total
County Average	28	70	22	120
ZIP 78745 Counts	200	361	127	688



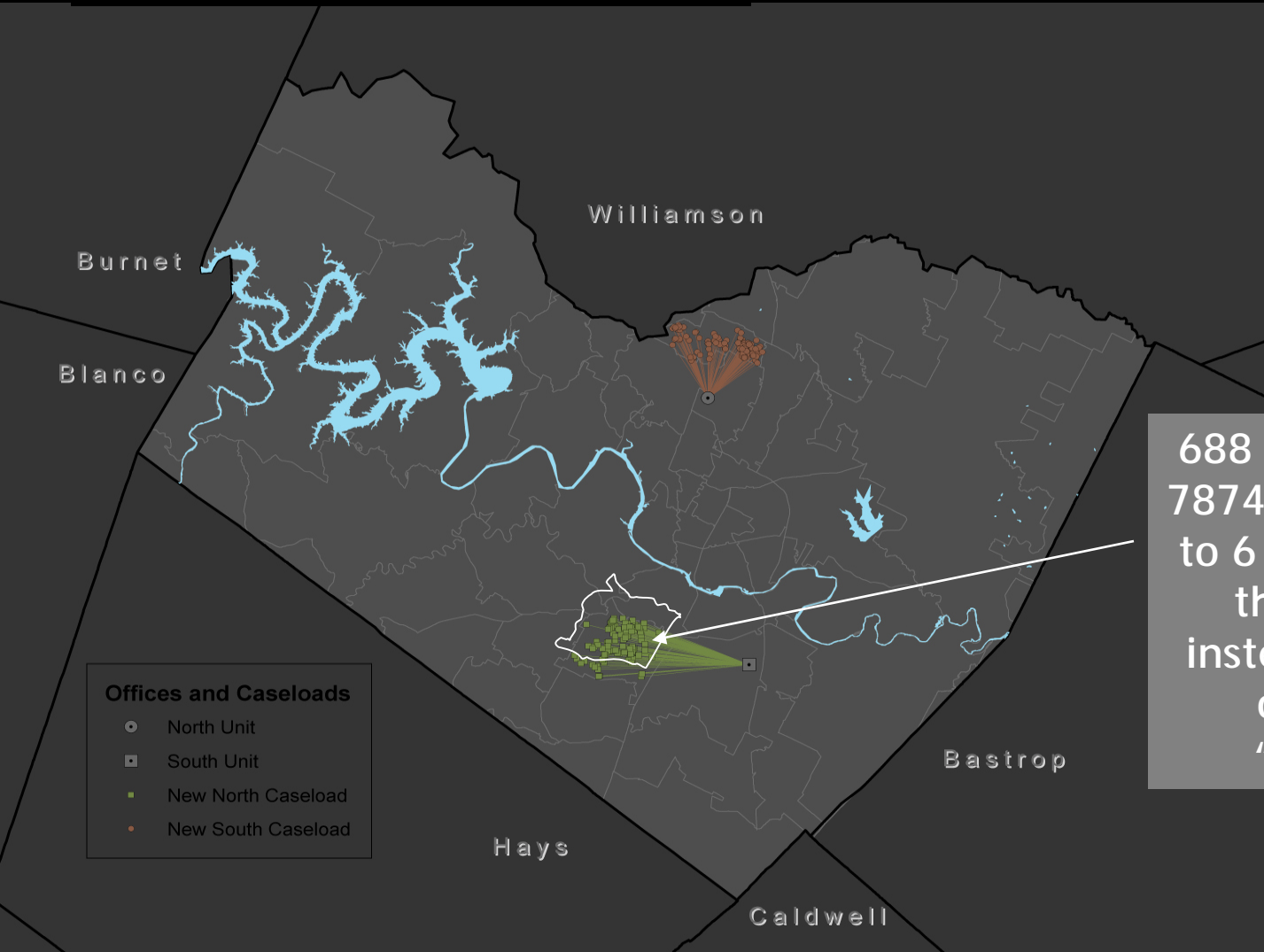
Offices and Caseloads

- North Unit
- South Unit
- Caseload #438
- Caseload #636

688 probationers in zip 78745 are presently assigned to 72 different officers

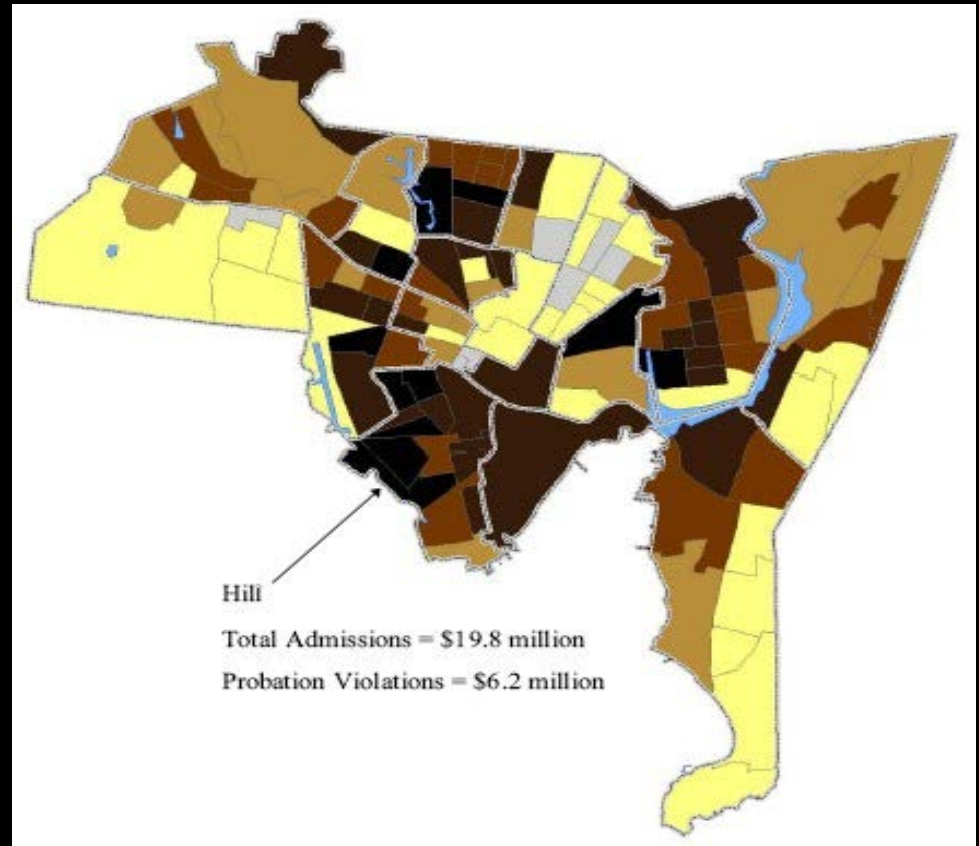
Probation Caseloads Could Be Organized More Effectively Around “High Stakes” Neighborhoods

Austin, Travis County

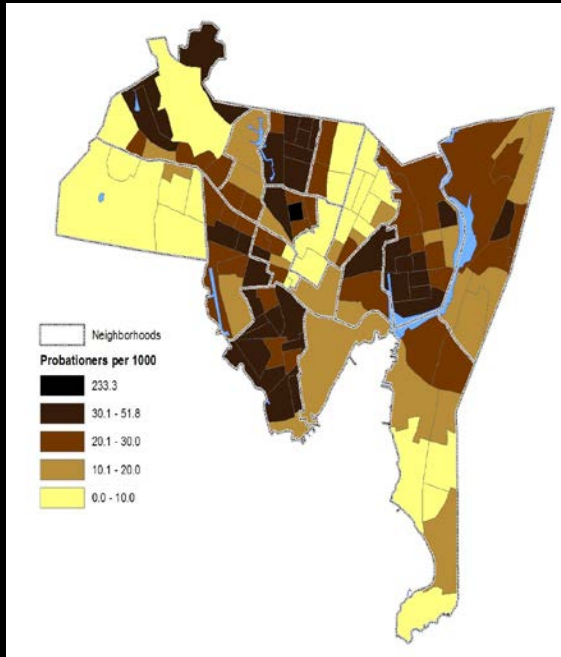


688 probationers in zip 78745 could be assigned to 6 officers working in the neighborhood instead of 72 different officers from a “central” office

Prison Expenditure: New Haven Neighborhoods

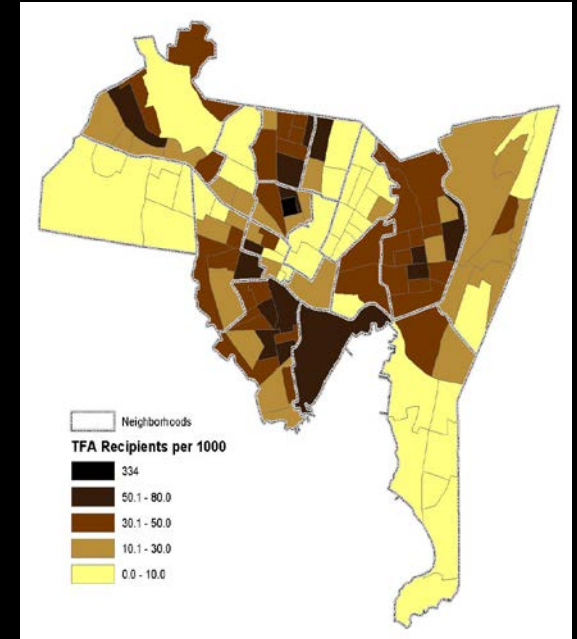
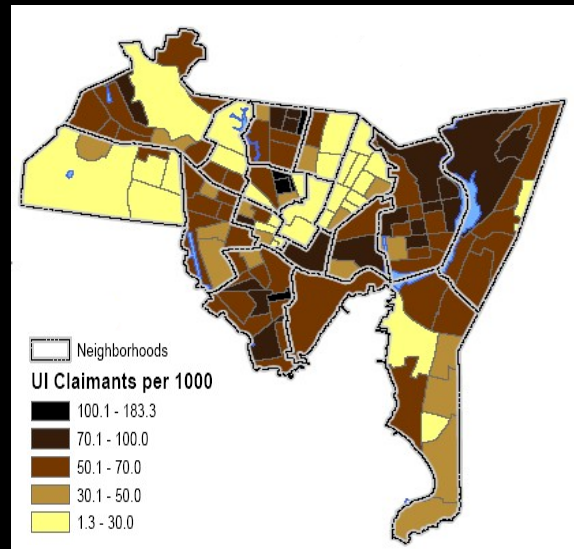


Probationers, Unemployment Insurance Claimants, TFA Recipients: New Haven Neighborhoods



Probationers

UI Claimants



TFA Recipients

Challenges

- **Politics of crime**
- **Availability of data**
- **Reinvestment**
- **Follow through / Accountability**

Key Messages

- **“Why does our prison population continue to grow, while other states with declining crime rates, like ours, have shrinking prison populations?”**
- **“Is spending \$500 million on new prisons the best way to increase public safety?”**
- **“We’ve already spent millions ensuring that we are safe by locking up offenders for longer periods of time. Now it’s time to make our state safer by making sure that when offenders inevitably finish their sentences they are productive taxpaying members of our community.”**

Key Messages, continued

- **“Taking scarce resources to grow the prison system further, without doing anything to make incarceration and community supervision any more effective, isn’t being smart on crime.”**
- **“We are at a crossroads: We can accept high recidivism rates and build additional prisons or do more to prepare people for release, increase public safety and reduce spending.”**
- **“If we don’t change course now, we will be building prisons forever and ever - prisons we can’t afford”**

Thank you.

Michael D. Thompson

Director

Council of State Governments Justice Center

100 Wall Street / 20th Floor

New York, NY 10005

t. 212-482-2320

mthompson@csg.org

www.justicecenter.csg.org