



# **INTRODUCTION TO THE UW SYSTEM AND THE WISCONSIN IDEA**

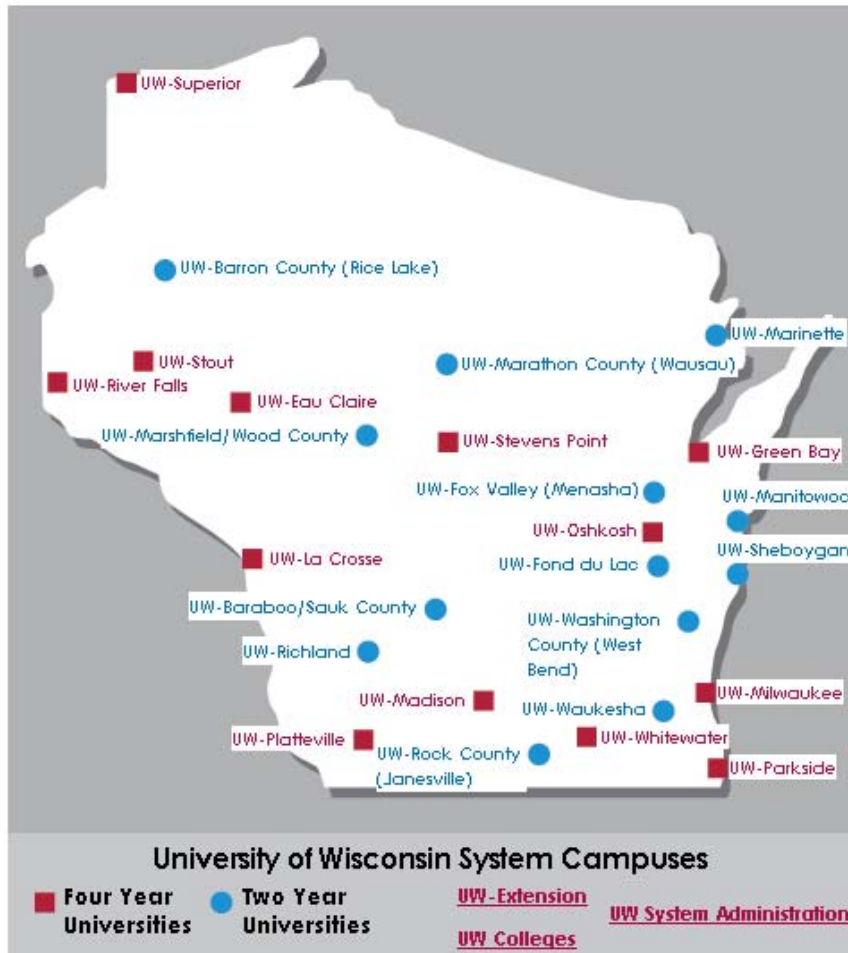
**Kevin P. Reilly, President**

# Board of Regents



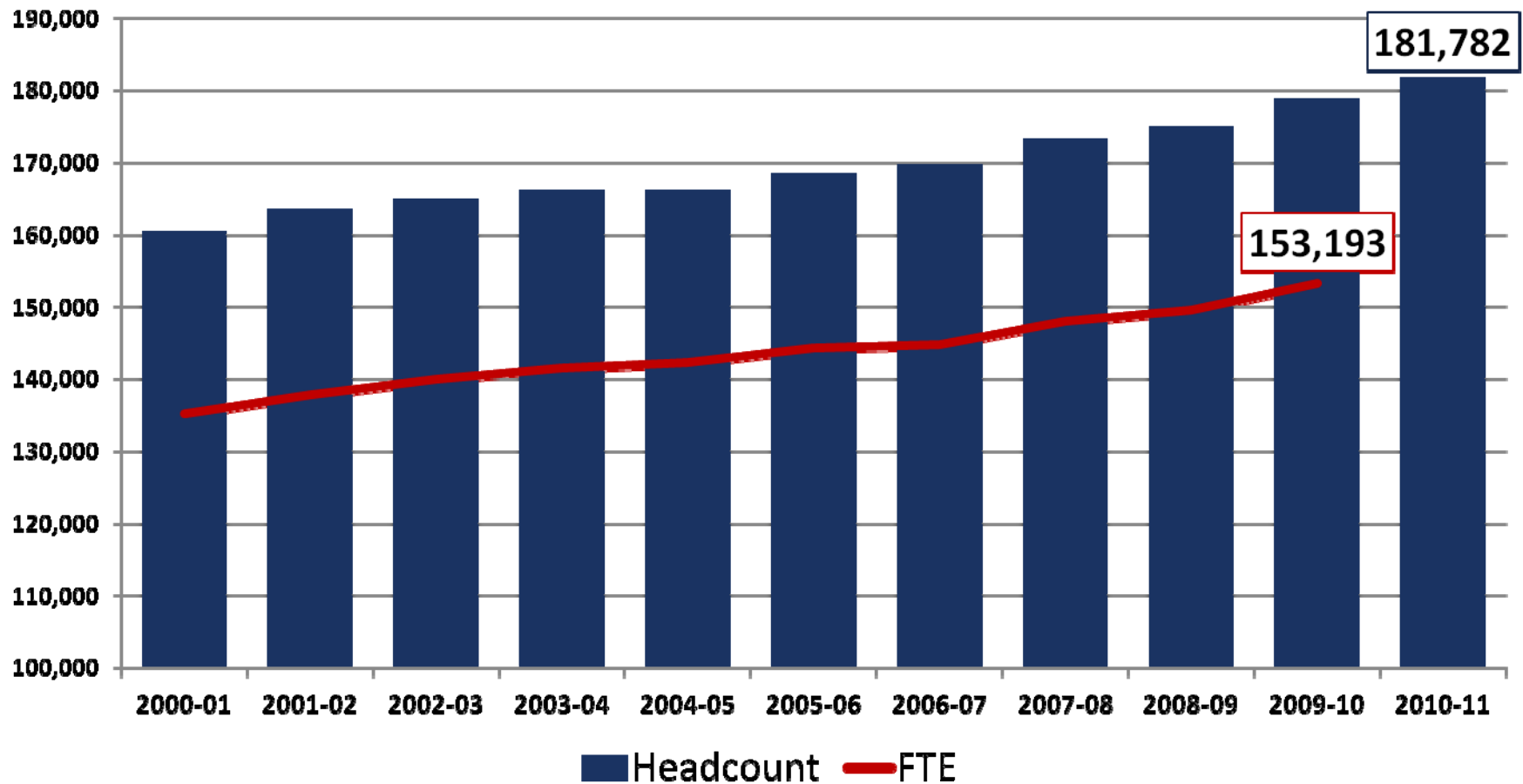
# Reaching the boundaries of the state

3



- 2 Doctoral Universities
- 11 Comprehensive Universities
- 13 Freshman/Sophomore UW Colleges
- Cooperative Extension offices in every county
- Statewide public radio and TV networks
- Online courses/degrees

# Record-breaking enrollment



# Accountability

5

## Access

- 92% of WI residents who apply are accepted
- Record-high enrollments and transfers

## Affordability

- Tuition remains very low compared to peers
- UW-Madison is 2<sup>nd</sup>-lowest in the Big 10

## Graduation

- Graduation rates better than national average
- Students graduating in less time, with fewer credits

## Brain Gain

- 81% of grads who start as residents stay in WI
- 13% of non-residents stay after graduation

## Satisfaction

- 98% have a favorable impression of alma mater
- 85% were “effectively prepared with knowledge and skill”

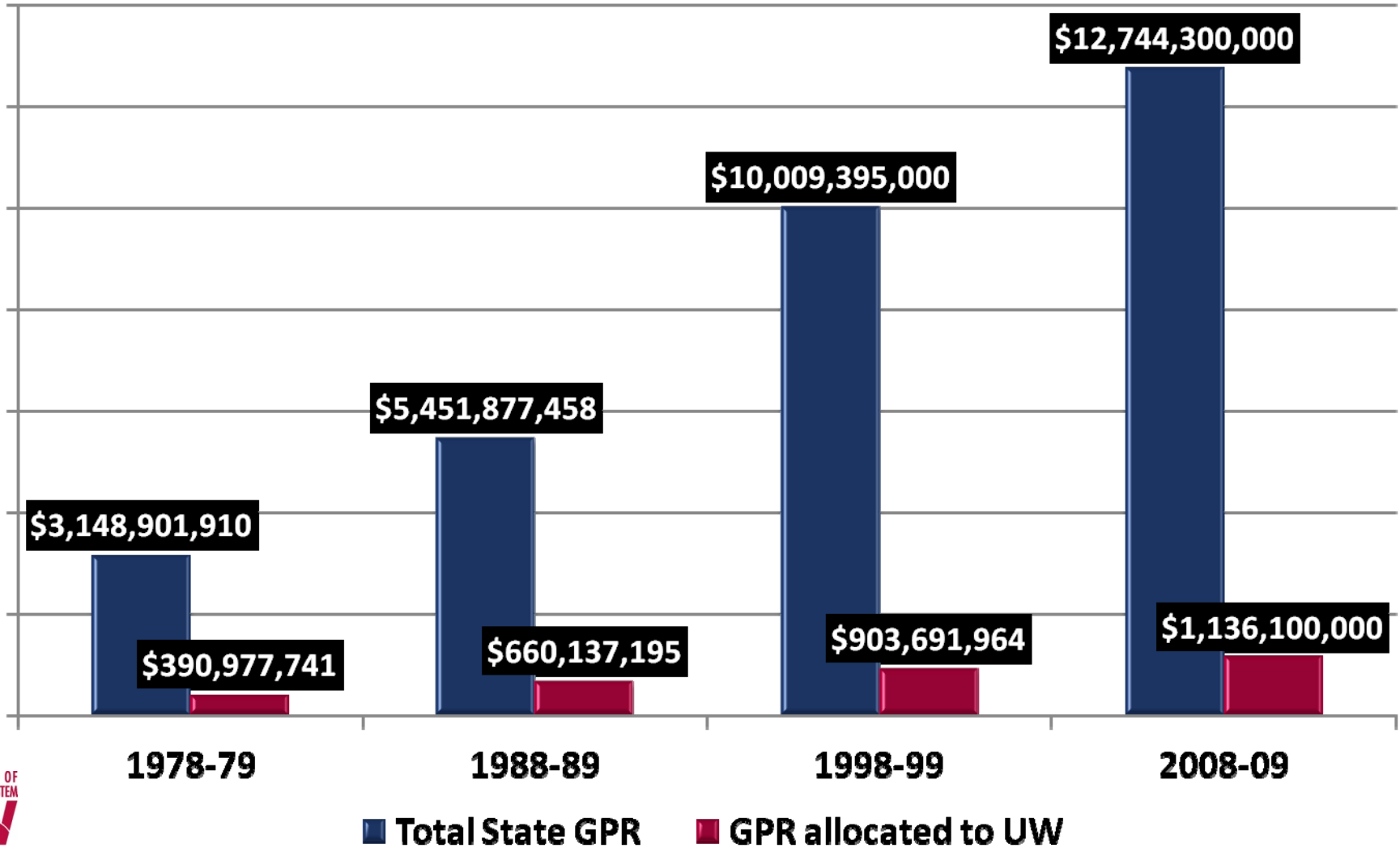
# UW System is efficient, productive

6

Measure of State Support	Wisconsin's Rank Among 50 States
<b>State Higher Education Funding <u>per State Resident</u></b> <i>Wisconsin: \$226 National Average: \$264</i>	<b>37<sup>th</sup></b>
<b>State Higher Education Funding <u>per \$1,000 in Personal Income</u></b> <i>Wisconsin: \$5.99 National Average: \$6.56</i>	<b>31<sup>st</sup></b>
<b><u>Five-Year Change</u> in State Funding for Higher Education</b> <i>Wisconsin: 6.2% National Average: 13.3%</i>	<b>36<sup>th</sup></b>
<b>State Funding <u>per UW System Student</u></b> <i>Wisconsin: \$6,300 National Average: \$8,600</i>	<b>38<sup>th</sup></b>

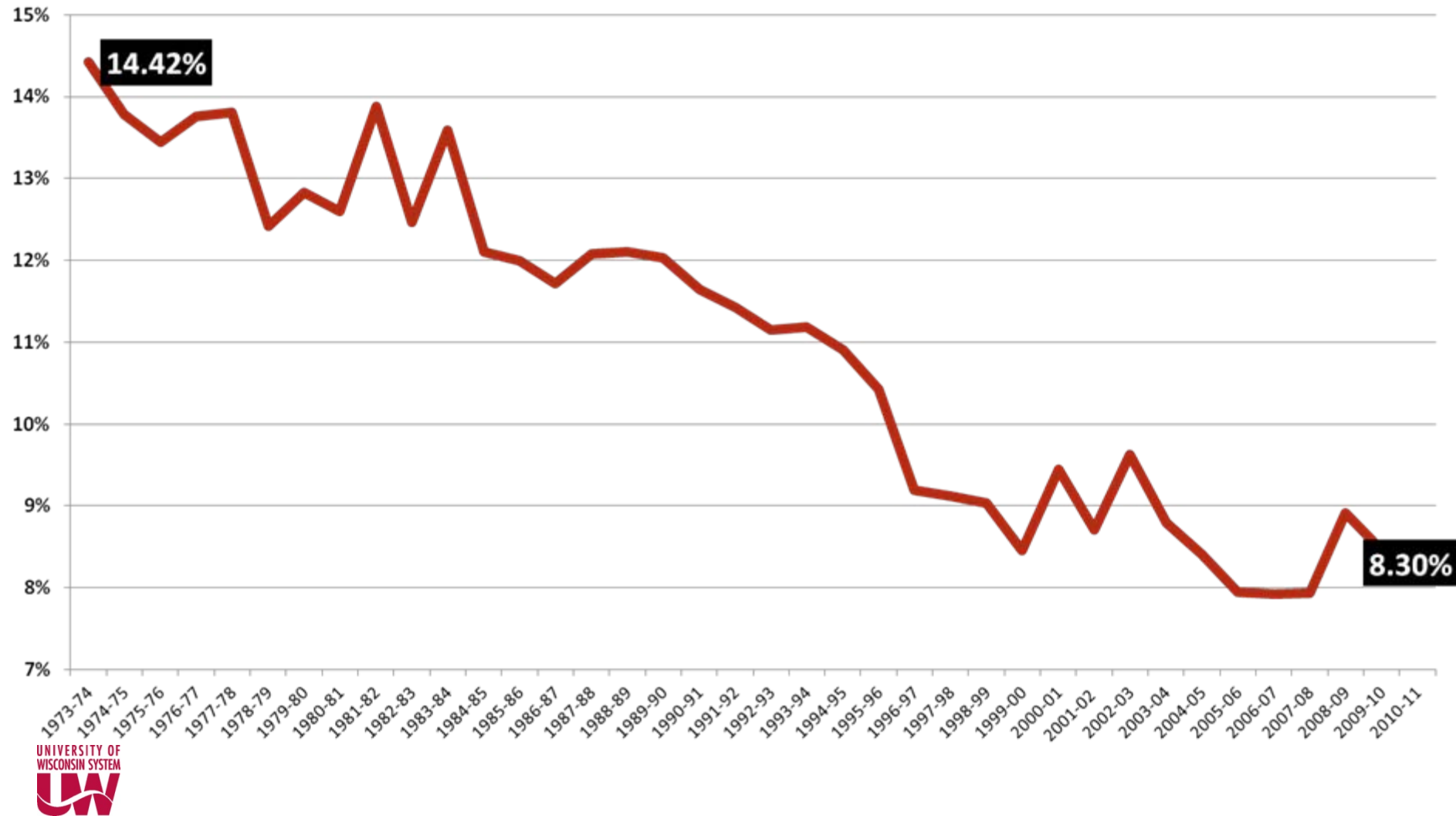
# State spending trends

7



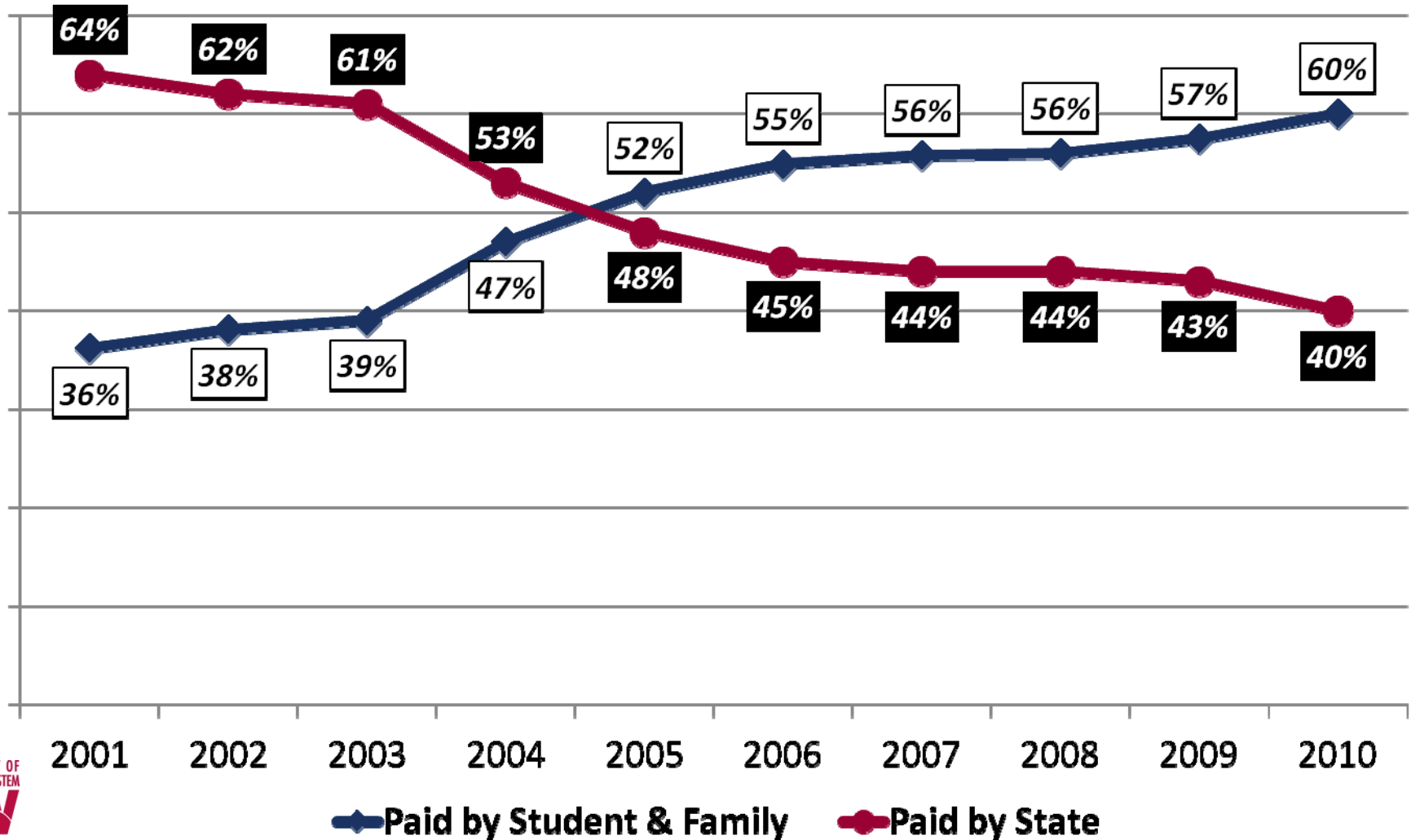
# UW as % of state expenditures

8





# Cost has shifted to students



# “The Wisconsin Idea”

10

- **Historic impact on agriculture and industry**



# “The Wisconsin Idea”

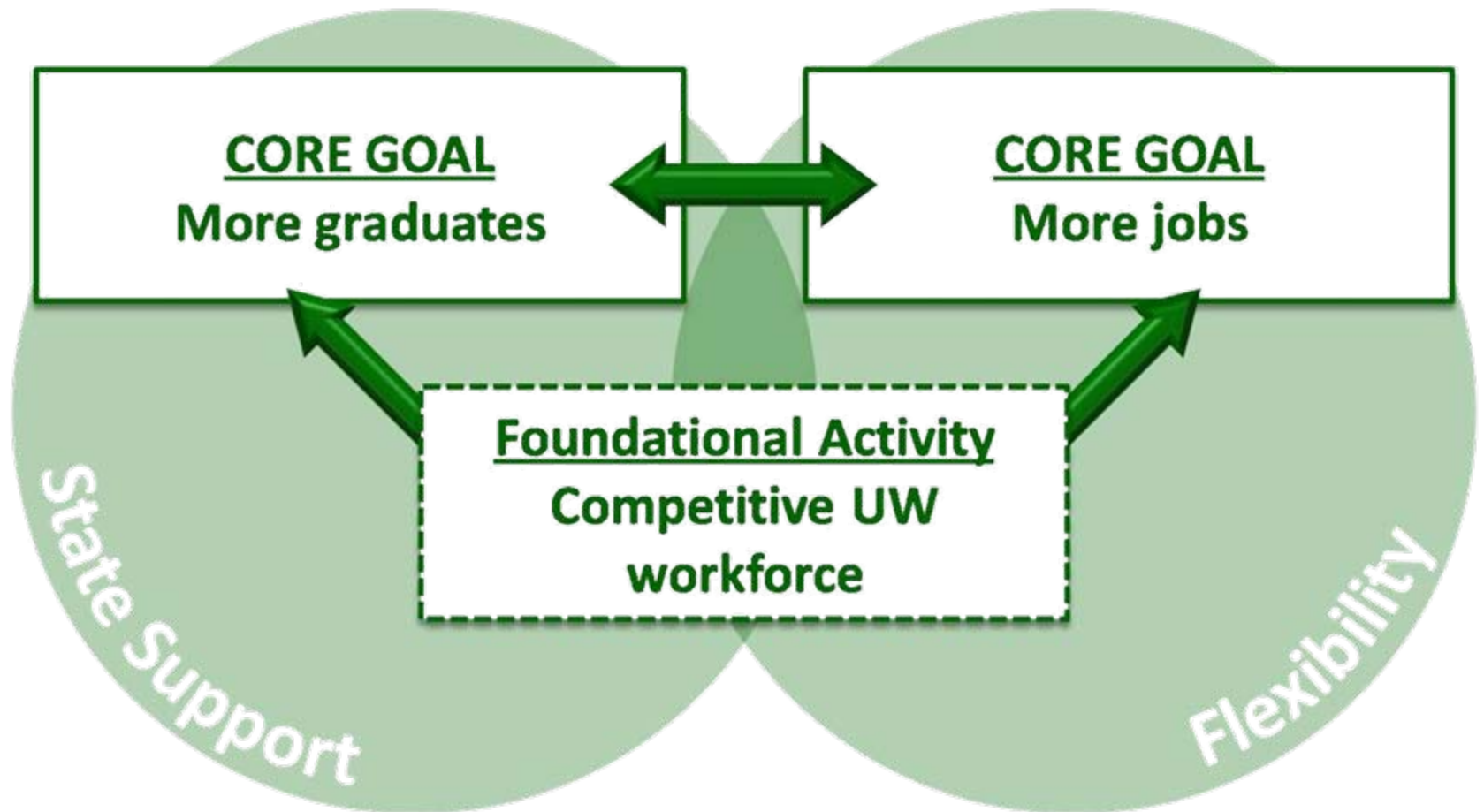
11

- Addressing today’s social, environmental, and health issues
- Helping inform public policy decisions
- Renewed focus on economic growth



# Growth Agenda for Wisconsin

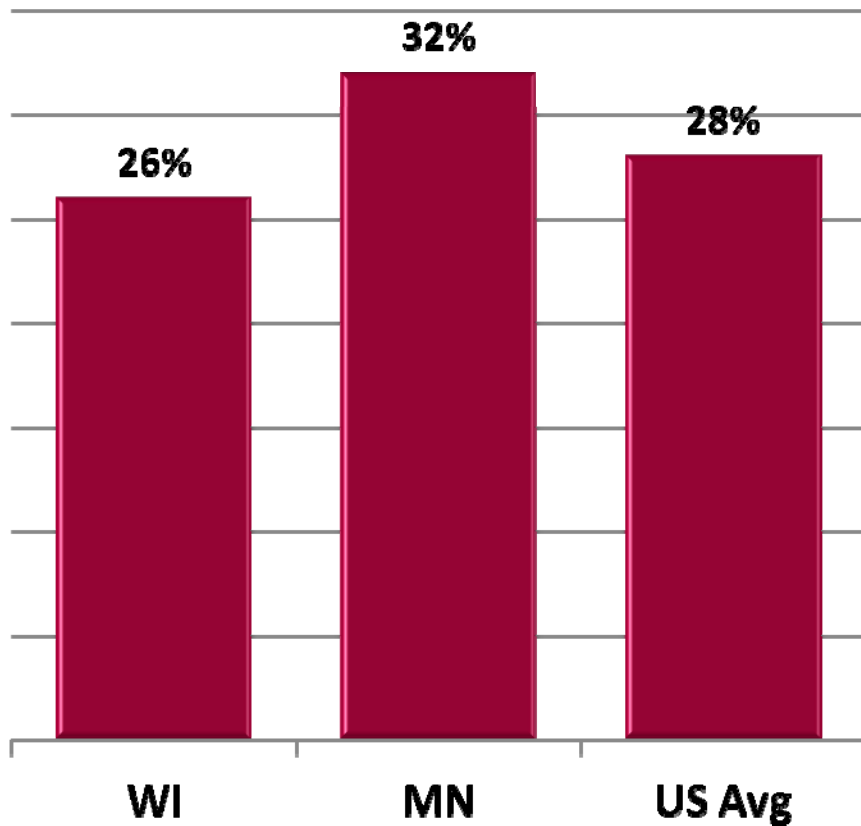
12



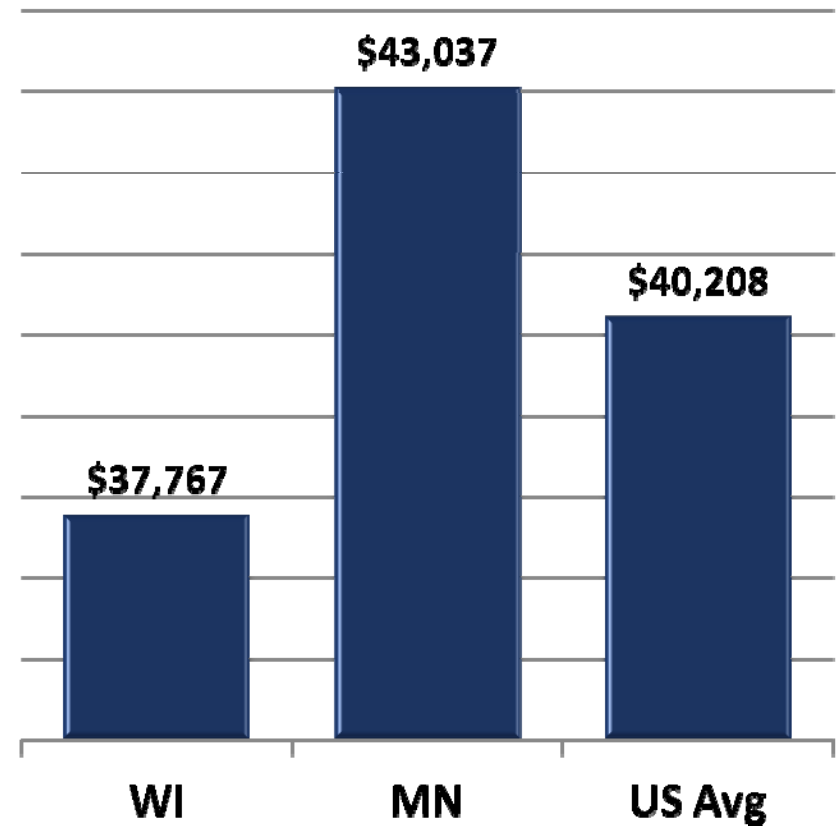
# Education leads to prosperity

13

## Adults with 4-yr degrees



## Per Capita Income



# Mutual responsibility

14



The UW System will...

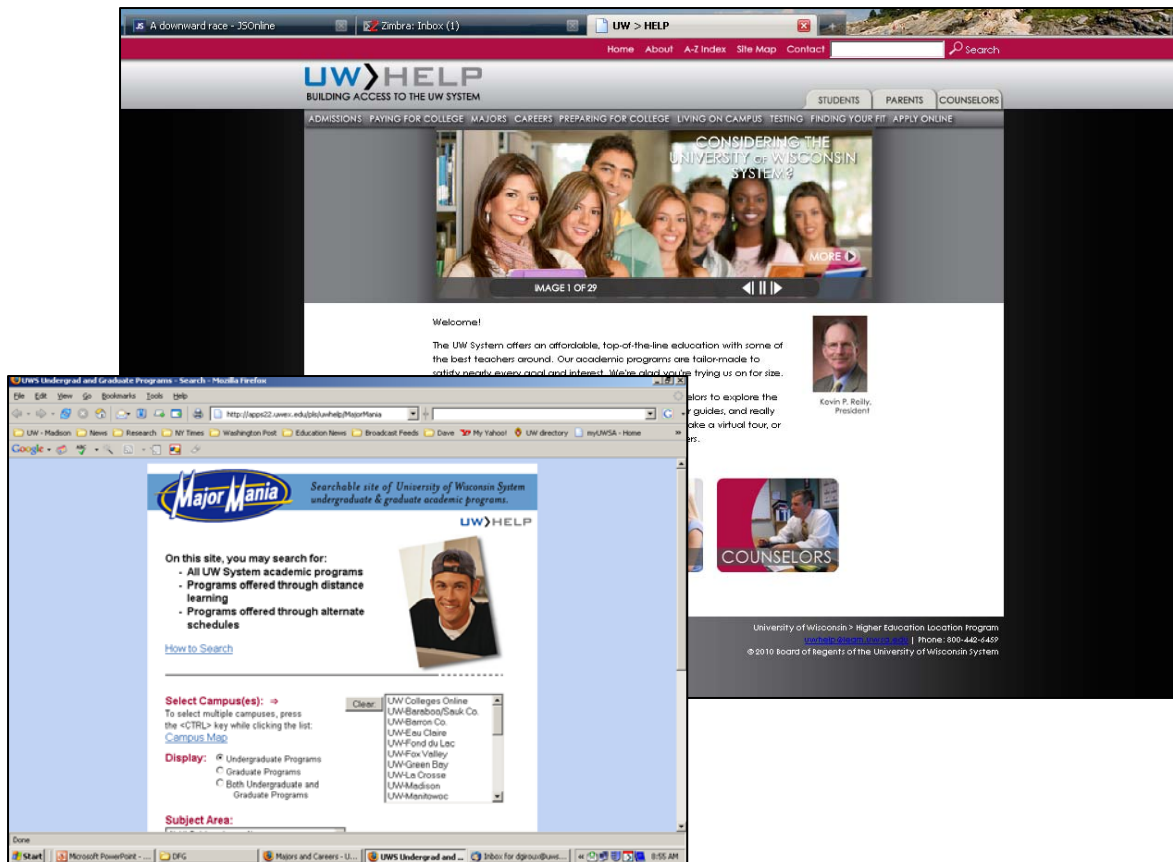
- Boost productivity & enhance quality
- Create new Wisconsin jobs
- Expand access



The State of Wisconsin will...

- Provide stable funding
- Allow greater management flexibility
- Expand access

# Resource: UW HELP

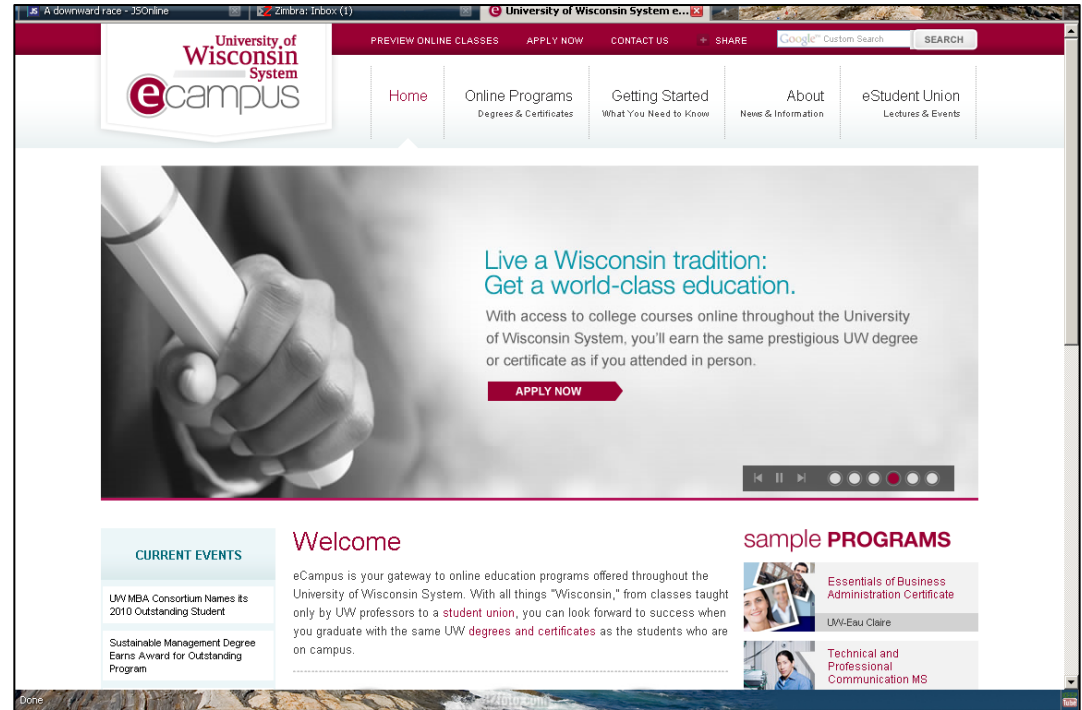


- Admissions information and online application
- Campus info
- Saving for College
- Major Mania
- Gearing up for College

<http://uwhelp.wisconsin.edu>

# Resource: eCampus

- 70+ online degrees & certificates
- Focus on working adult students, many of whom have some credits
- Specialized support and advising



<http://ecampus.wisconsin.edu>



# Veterans portal

17



- Portal for all veterans
- Gateway to UW and Tech Colleges
- Focused on their unique needs
- Info about benefit programs

# Resource: UW-Extension

- Educators and agents in all 72 counties
- Access to practical information
- Connection to the four-year campuses



<http://www.uwex.edu>

# Contacts

19

- **David F. Giroux**  
Executive Director  
608-262-4464  
[dgiroux@uwsa.edu](mailto:dgiroux@uwsa.edu)
- **Jessica Tormey**  
Special Assistant  
608-263-7962  
[jtormey@uwsa.edu](mailto:jtormey@uwsa.edu)
- **Grant Huber**  
Special Assistant  
608-262-4463  
[ghuber@uwsa.edu](mailto:ghuber@uwsa.edu)



[www.wisconsin.edu](http://www.wisconsin.edu)

20

# Questions?

