



WISCONSIN DEPARTMENT OF TRANSPORTATION I-794/HOAN BRIDGE PROJECT TOWN HALL MEETING

July 21, 2011: 5-7 p.m.



Purpose of Meeting/Agenda

- Introduction
- Share purpose and need for project
- Discuss scope of improvements
- Share proposed schedule of improvements
- Obtain input and answer questions



Introduction



HOAN BRIDGE

LAKE INTERCHANGE

I-794 EAST -WEST



Introduction



- ❑ Opened to traffic in 1977.
- ❑ The Hoan Bridge and Lake Interchange is responsible for hundreds of millions of dollars of south shore community development.
- ❑ The Hoan carries over 40,000 vehicles per day, the Lake Interchange carries 54,900 vehicles per day.

Introduction

- ❑ Serves Mitchell International Airport and Port of Milwaukee.
- ❑ Provides direct connection between Bay View and Marquette Interchange.
- ❑ Important for movement of passengers/cargo.
- ❑ Milwaukee's South Side/Bay View, St. Francis, Cudahy, South Milwaukee and Oak Creek all continue to benefit from the Hoan's connection.



Introduction

- WisDOT participating in the Lakefront Planning Commission
- Community involvement will be essential in the success of this project.



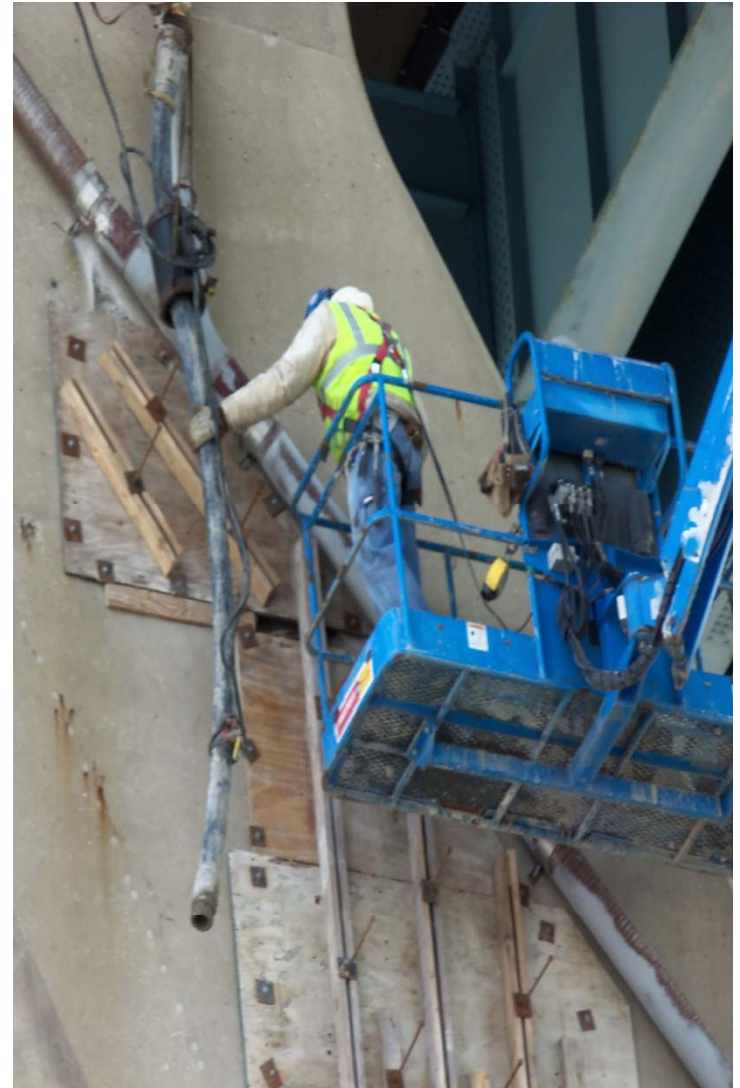
Purpose and Need

- Hoan Bridge subject of periodic in-depth structural and condition inspections.
- Latest inspection was initiated in 2010.
- Findings indicate that the structural integrity remains intact and safe.
- A number of repairs were identified which should be performed within the next 5 years.



Purpose and Need

- Last year, the underdeck netting project was completed at about \$7 million.
- The 2010 southern deck repair was approx. \$300,000.
- Work continues on the current \$7.5 million Hoan Bridge project to patch and repair areas between just south of Carferry Drive ramps to just north of the Michigan Street ramps.
- Maintenance costs will continue to increase if a long-term solution is not implemented.



Purpose and Need



Surface of deck



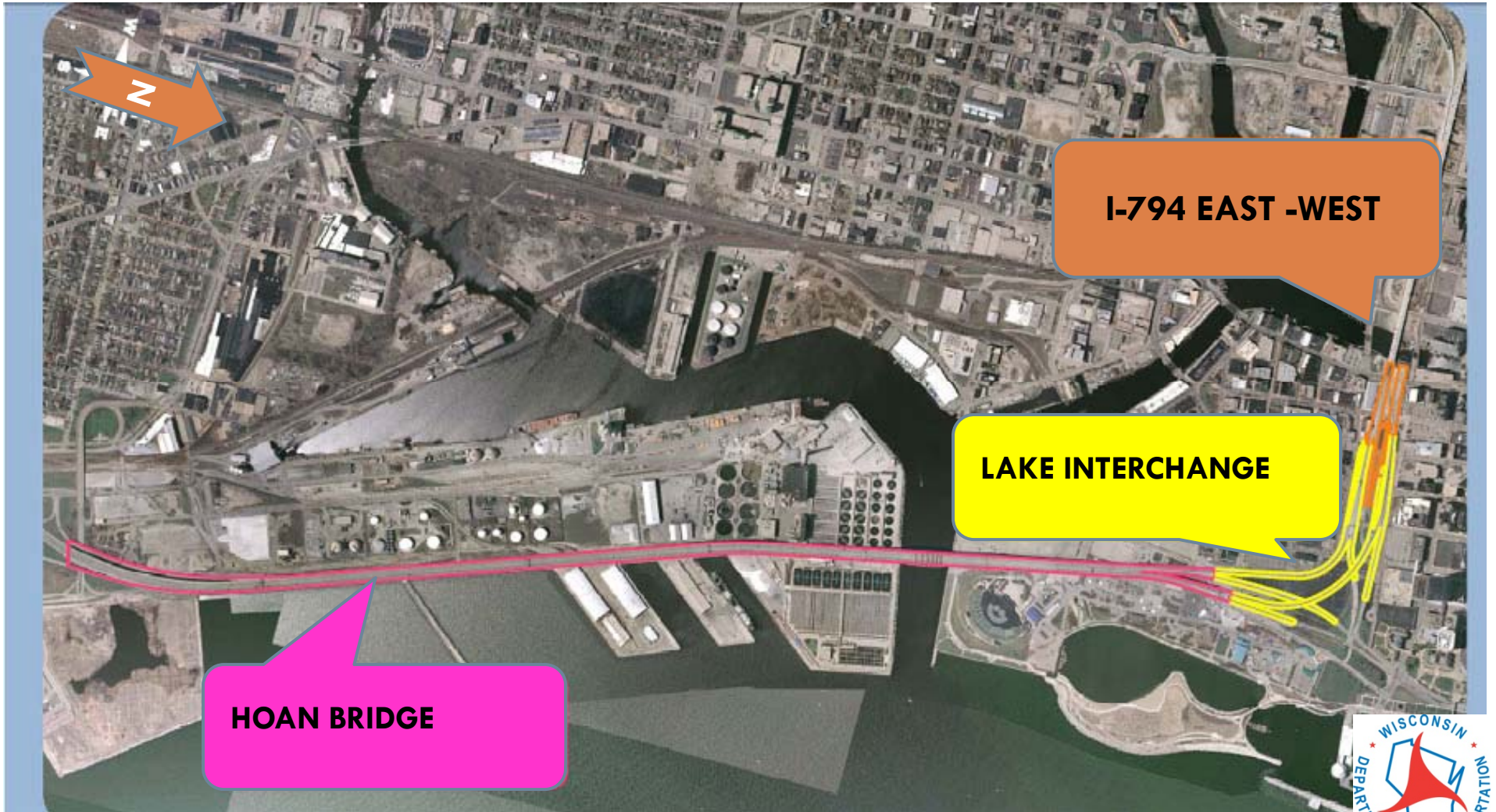
Corroded ship laps



Underside of deck



Scope of Improvements



HOAN BRIDGE

I-794 EAST -WEST

LAKE INTERCHANGE



Scope of Improvements

□ Hoan Bridge:

- Remove, replace the existing bridge deck and make structural modifications.
- Repaint the bridge steel.
- Rehabilitate in its current configuration between Lincoln Avenue to the south and the Lake Interchange (near Chicago Street) to the north.



Scope of Improvements

- **Lake Interchange (junction of I-794 from the Milwaukee River to the Hoan Bridge):**
 - Perform concrete overlays and surface repairs on existing structures.
 - There is still significant life in these structures – 20 to 25 years.
 - The Lake Interchange ramps will not be reconfigured.



Scope of Improvements

- **I-794 east/west (between the Marquette Interchange to the beginning of the Lake Interchange):**
 - Remove and replace bridges with new structures.



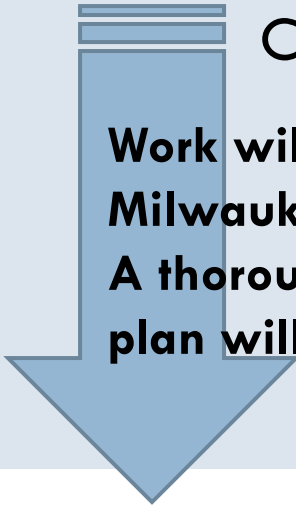
Bicycle and Pedestrian Considerations

- Review feasibility of bicycle and pedestrian facility alternatives
- Considerations
 - ▣ Traffic operations and safety for all
 - ▣ Americans with Disabilities Act compliance
 - ▣ Need/probable use
 - ▣ Availability of alternatives
 - ▣ Estimated additional cost



Schedule

TASK	TIMEFRAME
Bicycle/Pedestrian Feasibility Review	Summer/Fall 2011
Preliminary/Final Design	Fall 2011 – Summer 2013
Construction	Summer 2013 – Summer 2016



Work will be phased to keep Milwaukee open for business. A thorough traffic management plan will maximize traffic flow.



Contacts

Brian Roper, P.E.
Project Supervisor

Phone: (262)548-6450
E-mail: brian.roper@dot.wi.gov

Carolynn Gellings, P.E.
Project Manager

Phone: (262) 548-8716
E-mail: carolynn.gellings@dot.wi.gov

