



INSIDE THE 2025–2026
**WISCONSIN
BLUE BOOK**





The *Wisconsin Blue Book* is the biennial almanac of Wisconsin government. The 2025–26 *Wisconsin Blue Book* includes biographies of elected state officers and legislators, information about the units of state government, a feature article highlighting Wisconsin’s sister-state relationships around the world, the text of the Wisconsin Constitution, and statistical and reference information. The *Blue Book* is intended to be readable and usable for civics classes in Wisconsin schools. This study guide is designed for upper elementary students and consists of questions about Wisconsin state government and interesting facts about Wisconsin.



© 2025 Wisconsin Legislative Reference Bureau
One East Main Street, Suite 200, Madison, Wisconsin 53703
<http://legis.wisconsin.gov/lrb> • 608-504-5801

This work is licensed under the Creative Commons Attribution 4.0 International License. To view a copy of this license, visit <http://creativecommons.org/licenses/by/4.0/> or send a letter to Creative Commons, PO Box 1866, Mountain View, CA 94042.

THE LEGISLATIVE BRANCH

1. Read the overview of the Wisconsin Legislature on pp. 125–26 and answer the following:

a. What are the two houses of the legislature?

b. How many total members make up the Wisconsin Legislature?

c. How many assembly districts are in the territory of each senate district?

2. Use the maps and biographies on pp. 20–120 to answer the following questions. You can verify your answers at <https://legis.wisconsin.gov>.

a. Which senate district do you live in?

b. What is the name and party of your senator?

c. Name one committee to which your senator is assigned.

d. Which assembly district do you live in?

e. What is the name and party of your representative?

f. List two ways you can contact your representative.

3. Look at the table of votes for state representatives in general and special elections on pp. 583–87. How many votes did your representative receive in the last general election?



JOE KOSHOLLEK, LEGISLATIVE PHOTOGRAPHER

There are 99 members of the state assembly, and they are elected for two-year terms.

4. Using the information on pp. 132–37, determine if the following statements are true or false:



TAYLOR WOLFRAM, LEGISLATIVE PHOTOGRAPHER

a. Both houses do not have to pass a bill in identical form for it to become a law.

True

False

There are 33 members of the state senate, and they are elected for four-year terms.

b. A bill or part of a bill that the governor has vetoed can become a law if both houses of the legislature pass it again with a two-thirds vote, rather than a simple majority vote.

True

False

5. Using the information on legislative committees on pp. 128–30, answer the following:

a. Who appoints the members of committees in each house?

b. What is the name of a committee that includes members from both houses?

THE EXECUTIVE BRANCH

6. According to the table on p. 454, how many governors has Wisconsin had?

7. Use the biographies on pp. 4–7 to answer the following:

a. List two ways you can contact the governor.

b. Who is the lieutenant governor of Wisconsin?

c. Of the six state executive officers listed, which one is nonpartisan?

8. According to pp. 210–11, which elected executive officer serves as the head of the Wisconsin Department of Justice?

9. According to pp. 233–34, what does the Wisconsin secretary of state do with the Great Seal of the State of Wisconsin?



STEPHEN KELLEY, WISCONSIN SUPREME COURT PUBLIC INFORMATION OFFICER

Members of the Wisconsin Supreme Court participate in the pre-session conference for new legislators.

THE JUDICIAL BRANCH

10. Using the information on pp. 269–70, fill in the blanks:

- a. The Wisconsin Supreme Court has _____ total justices.
- b. The term of a Wisconsin Supreme Court justice is _____ years.
- c. State supreme court justices are elected in the month of _____

d. The current chief justice of the Wisconsin Supreme Court is _____

e. If a seat on the supreme court is vacant, who appoints a temporary replacement?

11. According to p. 276, which court in Wisconsin is the only court that holds jury trials?

U.S. CONGRESS

12. Read the information about Wisconsin's U.S. congressional delegation on pp. 12–18 and answer the following:

a. Name the two U.S. senators who represent Wisconsin.

b. What is the name and party of your U.S. representative?

c. According to the map on p. 13, Wisconsin is divided into how many congressional districts?



TAYLOR WOLFRAM, LEGISLATIVE PHOTOGRAPHER

Performers fill the capitol rotunda with sounds of the *sawara bayashi* during the visit of a delegation from Wisconsin's sister state, Chiba, Japan.

THE FEATURE ARTICLE

13. Look at “Going Global: Wisconsin’s Sister States” starting on p. 287. Which of Wisconsin’s sister states would you like to visit most? Why?

STATE SYMBOLS



14. Look at the state coat of arms and its description on p. 430. Name three things you see in the coat of arms and describe what they represent.

15. See the spread of state symbols on pp. 430–35 to answer the following:

a. What is the state fruit?

b. What is the state flower?

c. What is the state dog?

d. Which of the following is the state song?

- “On, Wisconsin”
- “Oh Wisconsin, Land of My Dreams”
- “The Wisconsin Waltz”

MORE ABOUT WISCONSIN

16. Use the timeline of significant events in Wisconsin history starting on p. 436 to answer the following questions:

a. When was the territorial area that became Wisconsin transferred from the French to the British?

b. In the 1920s, which Wisconsinite ran for president as the Progressive Party candidate?

17. Look at the table on p. 502 titled “Wisconsin population since 1840.” What was the rural population of Wisconsin in 1940?

18. According to the table of Wisconsin’s military service on p. 659, how many Wisconsinites were killed in World War II?

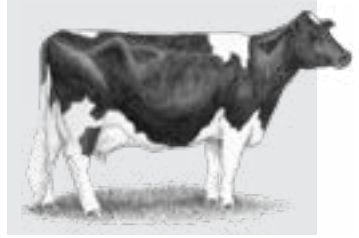
19. Using the information on pp. 588–90, list the five parties that qualified for ballot status as of November 2024.

20. According to p. 323, if a political party has never run a candidate in a statewide election, how many Wisconsin voters must sign a petition for the party to become a “recognized” party?

21. According to p. 324, what is the only way for a recognized political party to choose which candidate will be listed on the general election ballot?

22. According to the table on p. 671, Wisconsin is the leading state producer of how many agricultural products?

23. Using the top table on p. 677, how many bears were harvested in Wisconsin during the 2023–24 hunting season?



WISCONSIN CONSTITUTION

24. Find the Wisconsin Constitution starting on p. 693. The constitution is divided into sections called “articles.” How many articles are there?

25. According to article IV, section 6, of the state constitution, what are the two qualifications required to serve in the legislature?

26. According to article V, section 8, of the state constitution, if both the governor and lieutenant governor are no longer able to serve, who becomes the governor?

27. Which article of the Wisconsin Constitution declares the rights of the people of the state?

USING THE INDEX

28. Use the index starting on p. 729 to answer the following questions:

a. Who is your county's sheriff?

b. When was your county created?

c. How many court of appeals districts are there in Wisconsin?

d. Who is the senate majority leader?

e. Who is the speaker of the assembly?

f. Who is the state treasurer?



ANSWER GUIDE

The legislative branch

1. See pp. 125–26.
 - a. The assembly and the senate
 - b. 132 (99 in the assembly + 33 in the senate)
 - c. Three
2. See pp. 20–120 for district maps and legislative biographies.
 - a. Answers will vary.
 - b. Answers will vary.
 - c. Answers will vary.
 - d. Answers will vary.
 - e. Answers will vary.
 - f. Answers will vary, but include the legislator’s email, telephone number, or mailing address.
3. Answers will vary. See district vote for representatives to the assembly, general and special elections, pp. 583–87.
4. See pp. 132–37.
 - a. False
 - b. True
5. See pp. 128–30.
 - a. The assembly speaker in the assembly and the senate majority leader in the senate
 - b. Joint committee

The executive branch

6. 46 governors. See table on p. 454.
7. See biographies on pp. 4–7.

- a. Answers may vary, but include the governor's email, telephone number, or mailing address.
 - b. Lieutenant Governor Sara Rodriguez
 - c. The state superintendent of public instruction
8. The attorney general. See pp. 210–11.
9. The secretary of state affixes the great seal to all official acts. See pp. 233–34.

The judicial branch

10. See pp. 269–70.
- a. Seven
 - b. Ten
 - c. April
 - d. Chief Justice Jill Karofsky
 - e. The governor
11. The circuit court. See p. 276.

U.S. Congress

12. See pp. 12–18.
- a. Senators Ron Johnson and Tammy Baldwin
 - b. Answers will vary.
 - c. Eight

The feature article

13. Answers will vary.

State symbols

14. Any of the following. See p. 430:

- Plow (in shield): agriculture
- Pick and shovel (in shield): mining
- Arm and hammer (in shield): manufacturing
- Anchor (in shield): navigation
- Small shield: U.S. coat of arms and Wisconsin's membership in and loyalty to the United States
- Sailor: labor on water
- Yeoman: labor on land
- Horn of plenty: prosperity and abundance
- Pyramid of 13 lead ingots: mineral wealth and the 13 original states of the United States
- Badger: state animal
- "Forward": state motto

15. See pp. 430–35.

- a. Cranberry
- b. Wood violet
- c. American water spaniel
- d. "On, Wisconsin"

More about Wisconsin

16. See timeline beginning on p. 436.

- a. 1763. See p. 437.
- b. Robert M. La Follette Sr. See p. 444.

17. 1,458,443. See p. 502.

18. 8,390. See p. 659.

19. The Democratic Party of Wisconsin; the Republican Party of Wisconsin; the Constitution Party of Wisconsin; the Libertarian Party of Wisconsin; and the Wisconsin Green Party. See information beginning on p. 588.

20. 10,000. See p. 323.
21. The party must choose the candidate who wins that party's partisan primary. See p. 324.
22. 10. See p. 671.
23. 3,005. See p. 677.

Wisconsin Constitution

24. 14. See pp. 693–96.
25. A candidate must (1) have resided in the state for one year and (2) be a qualified elector in the district that he or she would represent. See p. 705.
26. The secretary of state. See p. 712.
27. Article I. See p. 697.

Using the index

28. See the index starting on p. 729.
 - a. Answers will vary. See index entry for “sheriffs, county” and table on pp. 621–22.
 - b. Answers will vary. See index entry for “counties, creation date” and table on pp. 509–11.
 - c. Four. See index entry for “appeals, court of” or “courts, appeals, court of” and map on p. 272.
 - d. Senate Majority Leader Devin LeMahieu. See index entry for “senate, Wisconsin, majority leader.”
 - e. Speaker Robin Vos. See index entry for “assembly, speaker.”
 - f. State Treasurer John S. Leiber. See index entry for “treasurer, state.”



