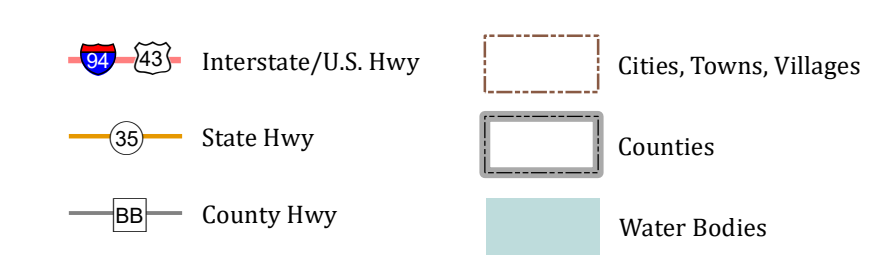
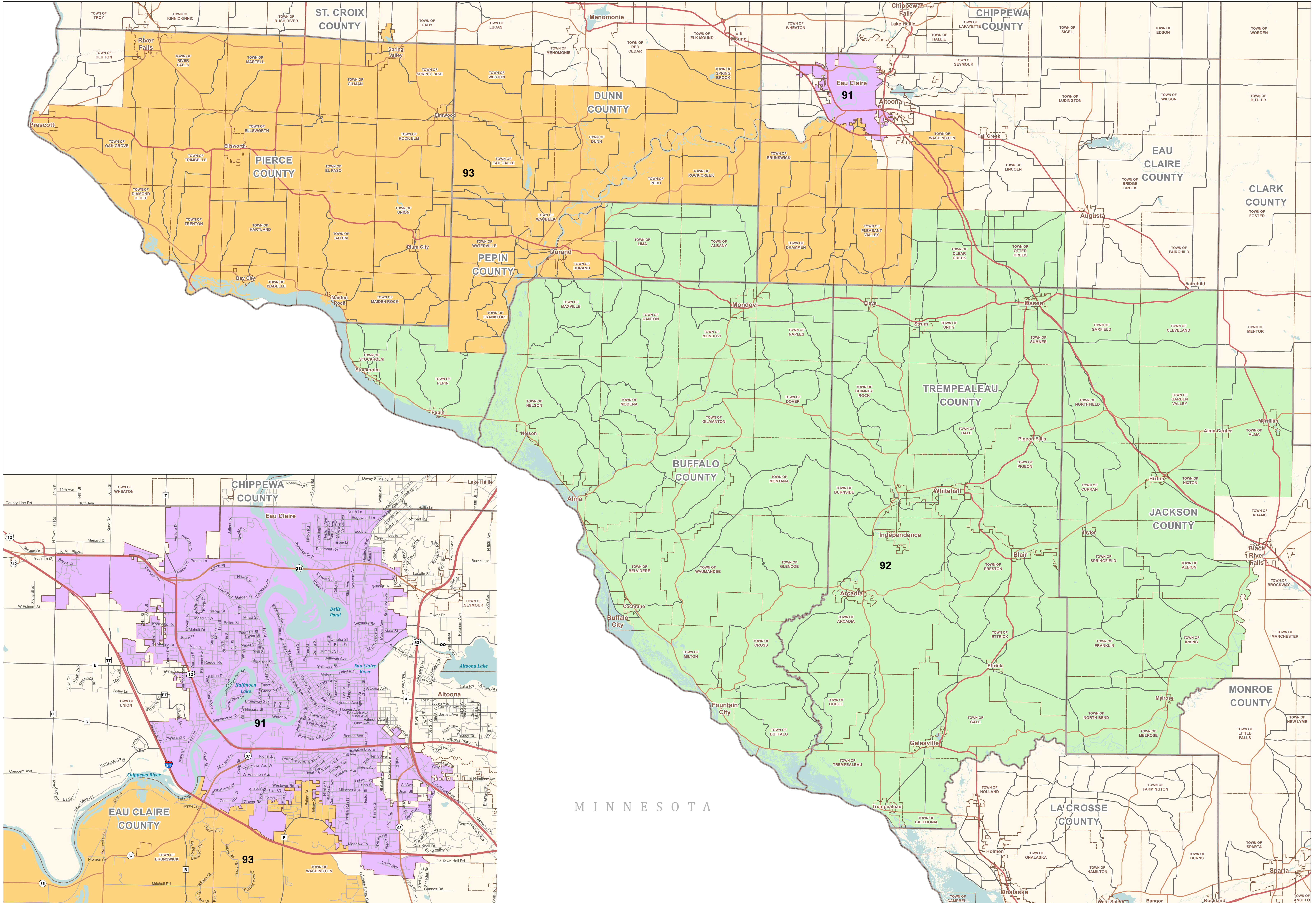


# Senate District 31

## STATE OF WISCONSIN



Legislative Technology Services Bureau  
 Madison, WI 53703  
 (608) 283-1830  
[www.legis.wisconsin.gov/ltsb/gis](http://www.legis.wisconsin.gov/ltsb/gis)

Source: Legislative districts were adopted by the Wisconsin Supreme Court via Johnson v. Wisconsin Elections Commission, Case No. 2021AP1450-0A on April 15, 2022. Block assignment data was appended to U.S. Census TIGER 2020 Block geography and dissolved by district.  
 Projection: Wisconsin Transverse Mercator (WTRN 83/91)  
 Cartography: LTSB GIS Team, 2022