

Department of REVENUE

Secretary of Revenue: CATE S. ZEUSKE, 266-6466; Fax: 266-5718.

Deputy Secretary: KATHLEEN D. HEUER, 266-6466.

Executive Assistant: THOMAS J. FONFARA, 266-6466.

Office of Appeals: CLAYTON E. SETH, *director*, 266-8920; Fax: 261-6222.

Legal Services: JOHN R. EVANS, *chief counsel*, 266-2845; Fax: 266-9949.

Public Information Officer: TERESA BAUMAN, 261-2271; Fax: 266-5718.

Administrative Services Division: ROBIN GATES, *administrator*, 264-8175; GERALD HODDINOTT, *assistant to the administrator*, 264-6879.

Budget and Business Operations Bureau: RICHARD E. GRADE, *director*, 266-8469; Fax: 266-2204.

Human Resource Services Bureau: MICHAEL D. KAPHINGST, *director*, 266-3842; Fax: 266-2825.

Information Systems Bureau: ANNETTE ESSER, *director*, 266-0218; Fax: 264-9923.

Quality Improvement and Planning Coordinator: vacancy, 266-0306.

Income, Sales and Excise Tax Division: DIANE L. HARDT, *administrator*, 266-1911; JACK E. DEYOUNG, *assistant administrator*, 266-8025.

Audit Bureau: DANIEL DAVIS, *director*, 266-3612; Fax: 267-0834.

Compliance Bureau: VICKI R. SIEKERT, *director*, 266-9635; Fax: 261-6226.

Tax Processing Bureau: CHERYL E. SULLIVAN, *director*, 267-5190; Fax: 264-6884.

Lottery Division: DONALD E. WALSH, *acting administrator*, 267-3602; SHIRLEY ECKES-MEYER, *deputy administrator*, 264-6651; Fax: 264-6644.

Administration Bureau: vacancy.

Marketing and Retailer Relations Bureau: DONALD E. WALSH, *director*, 267-3602.

Operations Bureau: TIMOTHY G. DEMASTER, *director*, (414) 229-0790, 4353 North Richards Street, Milwaukee 53212.

Research and Analysis Division: YEANG-ENG BRAUN, *administrator*, 266-2700.

Local Fiscal Policy Bureau: MONROE ROSNER, *director*, 266-0938.

State Tax Policy Bureau: DENNIS COLLIER, *director*, 266-5773.

State and Local Finance Division: JOHN W. RADER, *administrator*, 266-0939; WALLACE T. TEWS, *assistant administrator*, 266-9758; Fax: 264-6887.

Equalization Bureau: EUGENE R. MILLER, *director*, 266-8131.

Local Financial Assistance Bureau: FRANK A. HUMPHREY, *director*, 266-1657.

Manufacturing Assessment Bureau: CHARLES T. TURNER, *director*, 266-3845.

Utility and Special Taxes Bureau: ROBERT STEFFES, *director*, 266-3964.

Assessment Practices, Office of: GREGORY LANDRETTI, *director*, 266-8202.

Mailing Address: P.O. Box 8933, Madison 53708-8933.

Locations: State Education Building (GEF 3), 125 South Webster Street, Madison; 4610 University Avenue, Madison; State Revenue Building, 4638 University Avenue, Madison; 1802 West Beltline Highway, Madison (Lottery Division); and district and branch offices throughout the state.

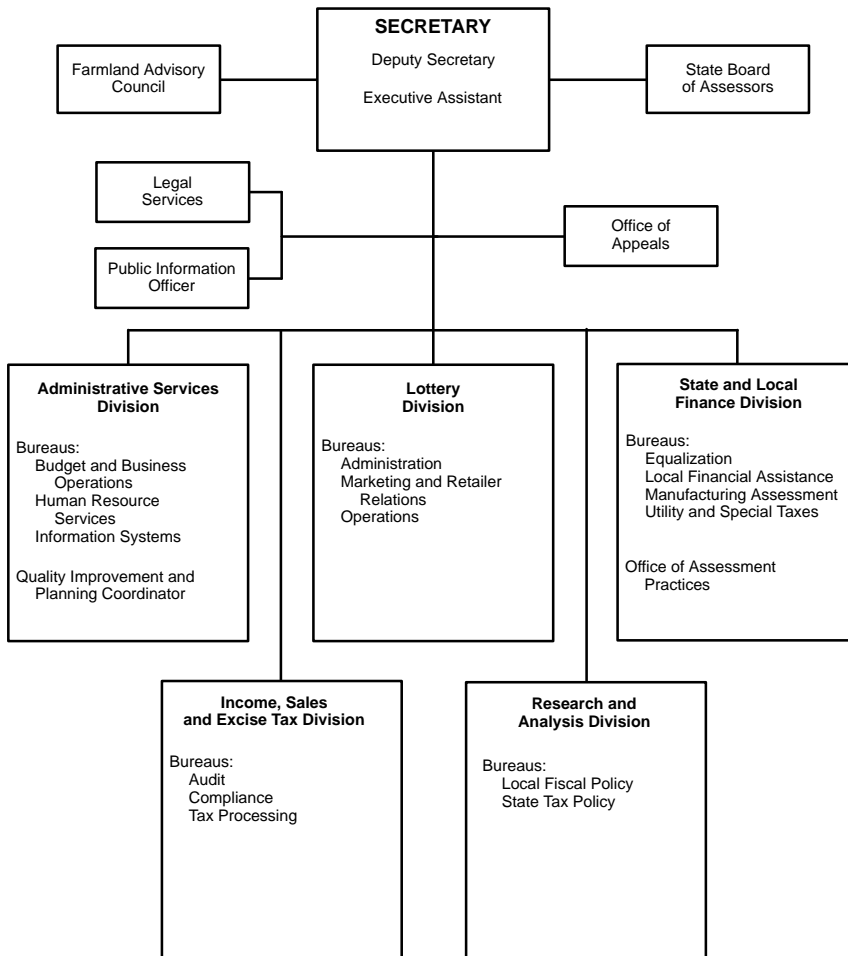
Telephone: (608) 266-1611.

Internet Address: <http://www.dor.state.wi.us>

Publications: Biennial Report; *Corporate Tax Climate: A Comparison of Nineteen States*; A Guide for Property Owners; Summary of Tax Exemption Devices; *Wisconsin Tax Bulletin*; and various brochures on specific issues.

Number of Employees: 1,309.55.

DEPARTMENT OF REVENUE



Units attached for administrative purposes under Sec. 15.03: Badger Board
Investment and Local Impact Fund Board

Total Budget 1995-96: \$70,612,200.

Total Budget 1996-97: \$134,958,400.

Statutory References: Sections 15.43 and 15.435; Chapters 70-79, 125 and 139.

Agency Responsibility: The Department of Revenue administers all major state tax laws (except the insurance premiums tax) and enforces the state's alcohol beverage and tobacco laws. It estimates state revenues, forecasts state economic activity, determines equalized value of taxable property, assesses manufacturing property, helps formulate tax policy and administers the Wisconsin Lottery. It also assists local governments in their property assessments and financial management and administers local financial assistance programs.

Organization: The department is administered by a secretary who is appointed by the governor with the advice and consent of the senate. The secretary appoints the administrator of the Income, Sales and Excise Tax Division from the classified service and the other division administrators from outside the classified service.

Unit Functions: The *Office of Appeals* is responsible for providing a prompt and impartial review of all assessments appealed by individuals, partnerships, trusts and corporations relating to income, franchise, sales, use, withholding and gift taxes and the homestead tax credit.

The *Legal Services* staff provides legal counsel and opinions, drafts and reviews tax legislation and administrative rules and litigates all cases brought before the Tax Appeals Commission. It also represents the department in nontax cases before administrative agencies and coordinates litigation and appeals.

The *Administrative Services Division* establishes policies and provides centralized support services in the areas of personnel, employe development, equal employment, employment relations, information technology, fiscal management, budget and management analysis, procurement and other management services.

The *Income, Sales and Excise Tax Division* administers and collects taxes under the state income, sales, estate and excise tax laws. It also administers the homestead tax credit, earned income credit, and farmland credit programs.

The *Lottery Division*, created in Section 15.433, Wisconsin Statutes, by 1995 Wisconsin Act 27, administers the Wisconsin State Lottery. It manages the design, distribution and sale of lottery products, consisting of pull-tab, instant scratch-off and on-line games. It conducts lottery drawings, handles media relations and answers players' questions about drawing results and lottery products.

The *Research and Analysis Division* develops and evaluates overall economic and tax policy for the secretary; analyzes legislation; and prepares revenue estimates, fiscal notes, economic forecasts and statistical reports.

The *State and Local Finance Division* assists local units of government by supervising administration of the general property tax, establishing equalized values and providing financial management assistance. It assesses all manufacturing property and administers the state's utility, pipeline, railroad and airline taxes. It also administers the state shared revenue and tax credit programs and the general purpose financial reporting requirements for counties and municipalities.

History: The antecedents of the Department of Revenue date back at least to Chapter 130, Laws of 1868, which created a State Board of Assessors, composed of the secretary of state and the entire state senate, to perform the state's taxing functions. At that time, the property tax was the state's primary source of revenue.

Chapter 235, Laws of 1873, changed the board's composition to the secretary of state, state treasurer and attorney general. The 1899 Legislature created the Office of Tax Commissioner (Chapter 206) to supervise the state's taxation system and made the commissioner a member and presiding officer of the State Board of Assessors.

The composition of the State Board of Assessors was changed again in Chapter 237, Laws of 1901, when the legislature replaced the constitutional officers with 2 assistant commissioners. The 1905 Legislature abolished the State Board of Assessors (Chapter 380) and assigned its functions to a 3-member Tax Commission, appointed by the governor with the advice and consent of the senate. This arrangement lasted until Chapter 412, Laws of 1939, created the Department of Taxation headed by a single commissioner. Chapter 75, Laws of 1967, renamed the agency the Department of Revenue, and the commissioner became the secretary.

Throughout the years, certain tax-related functions have been moved from one agency to another. Originally, for example, local officials assessed manufacturing property, but the 1973 Legislature gave the department responsibility for assessing all manufacturing property in the state.

Similarly, the 1939 Legislature made the Department of Taxation responsible for performing audits upon the request of local governmental units. After assignment to several other agencies, the legislature returned this function to the Department of Revenue in 1971. In 1983, the legisla-



ture repealed the department's mandatory municipal audit functions but left intact its discretionary oversight of municipal accounting. 1995 Wisconsin Act 27 transferred responsibility for administration of the Wisconsin State Lottery to the department from the Wisconsin Gaming Commission.

Statutory Board and Council

State Board of Assessors: CHARLES E. TURNER, *chairperson*; ROBERT BEHLING, DENNIS M. BONK, BRIAN D. HANKE, STEVE LARRABEE, JULIE MATHES, WILLIAM B. WARDWELL, MARK A. WEBER (Department of Revenue employees appointed by secretary).

The State Board of Assessors investigates all objections to the amount, valuation or taxability of real or personal manufacturing property. It also investigates all objections to the penalties issued for late or nonfiling of required manufacturing property report forms. The number of board members is determined by the secretary, but all must be department employees. The board was created by Chapter 90, Laws of 1973, and its composition and duties are prescribed in Section 70.995 (8) of the statutes.

Farmland Advisory Council: CATE S. ZEUSKE (secretary of revenue), *chairperson*; MARY JANE NELSON (representing agribusiness), CARL AXNESS (knowledgeable about agricultural lending practices), BRUCE JONES (UW System agricultural economist), PAUL JADIN (mayor of a city of 40,000 or more population), LINDA BOCHERT (environmental expert), DEBORAH VAN DYK (representing nonagricultural business), STEVE HINTZ (urban studies professor), JOHN MALCHINE (farmer) (all appointed by the secretary of revenue).

Advisor: RUPERT KURTZWEIL (assessor) (appointed by secretary of revenue).

Mailing Address: Department of Revenue, 125 South Webster Street, Madison 53708.

Telephone: 266-6466.

Agency Responsibility: The Farmland Advisory Council advises the Department of Revenue on implementing use-value assessment of agricultural land and reducing urban sprawl. It is required to report annually to the legislature on the usefulness of use-value assessment as a way to preserve farmland, discourage urban sprawl and reduce the conversion of farmland to other uses. It also recommends changes to the shared revenue formula to compensate local governments adversely affected by use-value assessment. In carrying out its duties, it cooperates with the Wisconsin Strategic Growth Task Force of the State Interagency Land Use Council. The 9-member council was created by 1995 Wisconsin Act 27, and its composition and duties are prescribed in Section 73.03 (49) of the statutes.

INDEPENDENT BOARDS ATTACHED FOR BUDGETING, PROGRAM COORDINATION AND RELATED MANAGEMENT FUNCTIONS BY SECTION 15.03 OF THE STATUTES

BADGER BOARD

Badger Board: GOVERNOR TOMMY G. THOMPSON (building commission chairperson); ATTORNEY GENERAL JAMES E. DOYLE, SECRETARY OF STATE DOUGLAS J. LA FOLLETTE, STATE TREASURER JACK C. VOIGHT (commissioners of public lands); CATE S. ZEUSKE (secretary of revenue), RICHARD SPEROS (secretary of tourism), GEORGE E. MEYER (secretary of natural resources).

Statutory References: Sections 15.435 (2) and 25.28.

Agency Responsibility: The Badger Board administers the Badger Fund, which consists of money derived from the net proceeds tax on metallic mining. The fund receives that portion of the tax that is not distributed to the Investment or Local Impact Fund or to counties, municipalities or Native American communities where mining takes place. The fund receives up to a maximum of 40% of the total tax. In addition, any excess over \$20 million in the Investment and Local Impact Fund is transferred to the Badger Fund. The board grants 50% of the interest earned by the fund to local governments for capital costs of recreational facilities and uses the other 50% for equalization aids to school districts. The board, which is composed of 7 *ex officio* members, was created by Chapter 186, Laws of 1981.



INVESTMENT AND LOCAL IMPACT FUND BOARD

Investment and Local Impact Fund Board: ROGER DAY (public member), *chairperson*; CATE S. ZEUSKE (secretary of revenue), TERRY GROSENHEIDER (secretary of commerce designee); LOUIS J. PERRY, ELIZABETH SORENSEN (municipal officials); ERHARD HUETTL, WAYNE WILSON (county officials); JIM SCHULTZ (school board member); RICHARD L. GURNOE (Native American member); LLOYD KINCAID, DANIEL B. MERRIAM (public members). (All except *ex officio* members or designees are appointed by governor with senate consent.)

Mailing Address: P.O. Box 8933, Madison 53708-8933.

Location: State Education Building (GEF 3), 125 South Webster Street, Madison.

Telephone: (608) 266-8133.

Statutory References: Sections 15.435 (1) and 70.395 (2).

Agency Responsibility: The Investment and Local Impact Fund Board, created by Chapter 31, Laws of 1977, administers the Investment and Local Impact Fund, created by the same law to help municipalities alleviate costs associated with social, educational, environmental and economic impacts of metalliferous mineral mining. The board certifies to the Department of Administration the amount of payment to be distributed to municipalities from the fund. It also provides guidance and funding to local governments throughout the development of a mining project.

The 11-member board consists of 2 *ex officio* members; 5 local officials recommended by: the League of Wisconsin Municipalities (1), the Wisconsin Towns Association (1), the Wisconsin Association of School Boards (1), and the Wisconsin Counties Association (2); a Native American recommended by the Great Lakes Inter-Tribal Council, Inc.; and 3 public members. The 9 members appointed by the governor serve staggered 4-year terms. Certain board members must meet qualifications based on residence in or adjacent to a county or municipality with a metallic minerals ore body or mineral development.



The Wisconsin Department of Revenue launched its own Internet home page in 1996 to make tax filing easier and more efficient. Using the new technology, taxpayers now can download state income tax forms in their homes and offices. (Department of Revenue)

**Office of the
SECRETARY OF STATE**

Secretary of State: DOUGLAS La FOLLETTE, 266-8888.

Deputy Secretary of State: JUNA KRAJEWSKI, 266-3470.

Administrative Services Division: MARLENE KOPLIN, *administrator*, 267-6810.

Government Records Division: MARJORIE ULMAN ROBB, *administrator*, 266-8888.

Mailing Address: P.O. Box 7848, Madison 53707-7848.

Location: 30 West Mifflin Street, 10th Floor, Madison.

Telephone: (608) 266-8888.

Fax: (608) 266-3159.

Publications: Notary Public Information Brochure.

Number of Employees: 6.50.

Total Budget 1995-96: \$3,056,700.

Total Budget 1996-97: \$408,100.

Constitutional References: Article VI, Sections 1 and 2.

Statutory Reference: Chapter 14, Subchapter III.

Agency Responsibility: The Office of the Secretary of State performs a variety of services for Wisconsin municipalities and the state government.

Organization: The secretary of state, who is elected as a partisan officer for a 4-year term in the November general election, heads the Office of the Secretary of State.

Unit Functions: The *Administrative Services Division* maintains revenue and expenditure accounting systems and provides administrative support for the agency.

The *Government Records Division* discharges program responsibilities set forth in approximately 100 sections of the Wisconsin Statutes. It keeps the Great Seal of the State of Wisconsin and affixes it to all official acts of the governor, issues notary public commissions, registers trade names and trademarks, coordinates the publication of state laws with the Legislative Reference Bureau, records official acts of the legislature and the governor, and files oaths of office. It also files deeds for state lands and buildings, issues notary authentications and apostilles (a form of international authentication of notaries public), preserves the original copies of all enrolled laws and resolutions, and files annexations and charter ordinances for villages and cities.

History: The 1836 congressional act that organized the Territory of Wisconsin provided for a secretary of the territory to be appointed by the President of the United States. This office was the forerunner of the post of secretary of state created by the Wisconsin Constitution. Delegates to the constitutional conventions of 1846 and 1848 determined that the secretary of state would be a constitutional officer charged with responsibility for maintaining the official acts of the legislature and the governor, keeping the Great Seal of the State of Wisconsin, and affixing it to all official acts of the governor. From the beginning of statehood until 1970, the secretary of state was elected for a 2-year term. Pursuant to a constitutional amendment ratified in 1967 and effective since the 1970 election, the term was extended to 4 years.

In the early days of statehood, the secretary of state personally performed a broad range of duties that are now delegated to the specialized departments of the executive branch. Chapter 276, Laws of 1969, created the Office of the Secretary of State to assist the secretary. 1995 Wisconsin Act 27 transferred the secretary's responsibilities relating to corporations and other business organizations and the Uniform Commercial Code to the Department of Financial Institutions.



**Office of the
STATE TREASURER**

State Treasurer: JACK C. VOIGHT, 266-1714.

Deputy State Treasurer: MICHAEL G. COLLINS, 266-7982.

Executive Assistant: SCOTT M. FELDT, 266-3712.

Mailing Address: P.O. Box 7871, Madison 53707-7871.

Location: 101 East Wilson Street, 5th Floor, Madison.

Telephone: (608) 266-1714.

Fax: (608) 266-2647.

Internet Address: <http://badger.state.wi.us/agencies/ost>

Publications: Monthly and biennial reports of the cash position of the state; monthly report on the Local Government Pooled-Investment Fund; and periodic newsletter for local clerks and treasurers.

Number of Employees: 23.50.

Total Budget 1995-96: \$1,997,000.

Total Budget 1996-97: \$2,423,100.*

*Includes costs of biennial publication of statewide abandoned property list.

Constitutional References: Article VI, Sections 1 and 3.

Statutory Reference: Chapter 14, Subchapter IV.

Agency Responsibility: The Office of the State Treasurer serves citizens, state agencies, businesses and local units of government by providing for receipt, custody, oversight and disbursement of state moneys and money deposited with the state under statutory requirements.

Organization: The state treasurer, who is a constitutional officer elected on a partisan ballot in the November general election, heads the Office of the State Treasurer and is the fiscal trustee for the State of Wisconsin. The treasurer appoints the deputy state treasurer from outside the classified service.

Functions: The state treasurer is responsible for the daily cash management of the state's surplus cash balances and administration of the Local Government Pooled-Investment Fund and Wisconsin's Unclaimed Property Program. The office makes a daily determination of funds available for investment by the State of Wisconsin Investment Board; makes monthly collections of fines, forfeitures, penalties and court fees due the state; makes quarterly collections of probate fees; collects payments on loans made by the Board of Commissioners of Public Lands; and makes annual settlements with local government treasurers of taxes and fees due the state.

The state treasurer acts as registrar for all state general obligation bonds and administers the state's uniform unclaimed property and general escheat laws, which enable the rightful owners of unclaimed property to claim their assets.

History: The territorial treasurer, an office created in 1839, was appointed by the governor, but the state constitution adopted in 1848 made the office an elective partisan position. From 1848 through 1968, the state treasurer was elected to a 2-year term in the November general election. Since 1970, following ratification of a constitutional amendment in April 1967, the state treasurer has been elected to a 4-year term. Chapter 276, Laws of 1969, created the Office of the State Treasurer to assist the treasurer.

INDEPENDENT UNIT ATTACHED FOR BUDGETING, PROGRAM COORDINATION AND RELATED MANAGEMENT FUNCTIONS BY SECTION 15.03 OF THE STATUTES

BOARD OF COMMISSIONERS OF PUBLIC LANDS

and

DIVISION OF TRUST LANDS AND INVESTMENTS

Board of Commissioners of Public Lands: JAMES E. DOYLE (attorney general), DOUGLAS J. LA FOLLETTE (secretary of state), JACK C. VOIGHT (state treasurer). (All serve as *ex officio* members.)



Secretary: STEPHANIE W. THORN.

Division of Trust Lands and Investments: STEPHEN E. GAUGER, *deputy secretary.*

Mailing Address: P.O. Box 8943, Madison 53708-8943.

Location: Suite 200, 125 South Webster Street, Madison.

Telephone: (608) 266-1370.

Fax: (608) 267-2787.

District Office: MICHAEL PAUS, *administrator*, 8770 Highway J, Woodruff, 54568-9635, (715) 356-7317; Fax: (715) 356-2548.

Publications: *The Benefits of Land Records Modernization*; Biennial Report; Land Records Guide; Municipal Borrowing from the State Trust Fund Loan Program; School District Borrowing from the State Trust Fund Loan Program.

Number of Employees: 9.00.

Total Budget 1995-96: \$776,500.

Total Budget 1996-97: \$778,700.

Constitutional Reference: Article X, Section 7.

Statutory References: Section 14.563 (1) and Chapter 24.

Agency Responsibility: As required by the Wisconsin Constitution, the 1849 Legislature created the Board of Commissioners of the School and University Lands (Chapter 24, Revised Statutes of 1849), composed of the secretary of state, the state treasurer and the attorney general, to accept public lands granted to Wisconsin by the federal government and to sell them and invest the proceeds for the benefit of public schools, universities and libraries. The board was renamed the Board of Commissioners of Public Lands in the Revised Statutes of 1878.

At statehood in 1848, Wisconsin possessed more than 1.4 million acres of land and, between 1852 and 1892, approximately 10 million additional acres were granted to it by the federal government. The board currently holds about 80,000 acres, and the trust funds are valued at over \$350 million.

The board directs and supervises the division and appoints a secretary to administer the agency. The division manages and sells public lands on behalf of the board, issues permits for use of the lands, preserves the state's original land records and manages the trust fund loan program. The trust fund is derived from the sale of public lands, timber revenues, property forfeitures and escheats, and fines and forfeitures collected for violations of state laws. Trust fund principal may be loaned to Wisconsin municipalities, lake districts, sanitary districts, technical college districts and school districts for public works projects. Trust fund earnings are distributed annually to the Department of Public Instruction for school library aids and to the University of Wisconsin System. Over the years, investment of proceeds has helped to finance not only public schools and universities, but also roads, canals, railroads and the State Capitol.

Chapter 75, Laws of 1967, created the Division of Trust Lands and Investments, under the supervision of the Board of Commissioners of Public Lands and attached it to the Department of Natural Resources. Since then, the legislature has successively attached the division to the Department of Justice (Chapter 34, Laws of 1979), the Department of Administration (1993 Wisconsin Act 16), and the Office of the State Treasurer (1995 Wisconsin Act 27).



TECHNICAL COLLEGE SYSTEM

Technical College System Board: DELMAR E. DELONG (employer member), *president*; ALLEN E. SCHRAUFNAGEL (public member), *vice president*; NANCY MOMMSEN (farmer member), *secretary*; JOHN T. BENSON (superintendent of public instruction), LINDA STEWART (secretary of workforce development), VIRGINIA MACNEIL (member of UW System board of regents designated by president); BRENT BUSSAN (student member); JAMES N. ELLIOTT (employee member); JONATHAN B. BARRY, DEBRA KENNER, JEANETTE NICOLAISEN, L. ANNE REID, LINUS M. STOLL (public members). (All except *ex officio* members are appointed by governor.)

State Director: EDWARD CHIN, 266-1770, chine@

Executive Assistant: vacancy.

Finance, Planning and Policy, Division of: DANIEL CLANCY, *assistant state director*, 266-7983, clancyd@

Budget, Finance and Management, Bureau of: GREGORY WAGNER, *director*, 266-2947, wagnerg@

Planning and Management Information, Bureau of: NORMAN KENNEY, *director*, 266-1766, kenneyn@

Policy and Government Relations, Bureau of: JANET WASHBON, *director*, 266-2017, wasboj@

Legal Counsel: vacancy.

Program and Economic Development, Division of: JAMES A. URNESS, *assistant state director*, 266-1739, urnessj@

Program Development and Operations, Bureau of: vacancy, *director*, 266-7993.

Student and Support Services, Bureau of: DEBORAH J. MAHAFFEY, *director*, 266-2302, mahaffd@

Address e-mail by combining the user ID and the state extender: userid@board.tec.wi.us

Mailing Address: P.O. Box 7874, Madison 53707-7874.

Location: 310 Price Place, Madison.

Telephone: (608) 266-1770.

Fax: (608) 266-1285.

Publications: *Go Here. Get There. Technical College Guide*; Technical College Facts; annual and biennial reports; cost allocation summaries; graduate follow-up reports; employer satisfaction reports; annual evaluation reports of technical college offerings and services.

Number of Employees: 85.50.

Total Budget 1995-96: \$161,108,500.

Total Budget 1996-97: \$161,031,800.

Statutory References: Section 15.94; Chapter 38.

Agency Responsibility: The Technical College System Board is the coordinating agency for the state Technical College System. The board establishes statewide policies and standards for the educational programs and services provided by the 16 technical college districts that cover the state. The district boards, in turn, are responsible for the direct operation of their respective schools and programs. They are empowered to levy property taxes, provide for facilities and equipment, employ staff and contract for services. The districts set academic and grading standards, appoint the district directors, hire instructional and other staff, and manage the district budget.

The system board supervises district operations through reporting and audit requirements and consultation, coordination and support services. It sets standards for building new schools and adding to current facilities. It also provides assistance to districts in meeting the needs of target groups, including services for the disadvantaged, the disabled, women, dislocated workers, the incarcerated and minorities.



The board administers state and federal aids. It works with the Department of Public Instruction to coordinate secondary and postsecondary vocational and technical programs. It also cooperates with the University of Wisconsin System to establish coordinated programming in order to make the services of the 2 agencies fully available to state residents. The board cooperates with the Department of Workforce Development to provide training for apprentices.

Organization: The 13-member Technical College System Board includes 9 members appointed by the governor to serve staggered 6-year terms and a technical college student appointed for a 2-year term. No person may serve as board president for more than 2 successive annual terms. A 1971 opinion of the attorney general (60 OAG 178) held that a member of a technical college district board could not serve concurrently on the state board. The board appoints a director from outside the classified service to serve at its pleasure and the director selects the executive assistant and division administrators from outside the classified service.

The 16 technical college districts encompass 46 campuses. Each district is headed by a board of 9 members who serve staggered 3-year terms. District boards include 2 employers, 2 employees, a school district administrator, a state or local elected official, and 3 additional members as defined by statute. A district appointment committee, composed of county board chairpersons or school board presidents, appoints board members subject to approval of the state system board.

Unit Functions: The *Division of Finance, Planning and Policy* develops and coordinates budgeting, planning and policy analysis. It is responsible for facilities development; research; labor market information; legislative analysis; management information; government relations; and oversight of district budgets, enrollments and policies. The division also provides accounting, data processing, purchasing and personnel services.

The *Division of Program and Economic Development* has responsibility for program definition, approval, evaluation and review. It focuses on programs in agriculture, office services, marketing, home economics (including family and consumer education), health occupations, trade and industry (including apprenticeship, fire service, law enforcement, safety, and technical and vocational training), general education, adult basic education and environmental education.

The division is responsible for personnel certification, student financial aid, federal projects for the disabled and disadvantaged, adult and continuing education outreach and Job Training Partnership Act projects. It serves as liaison to business, industry and secondary schools.

History: Laws passed in 1907 permitted cities to operate trade schools for persons age 16 or older as part of the public school system (Chapter 122) and allowed them to establish technical schools or colleges, under the control of either the school board or a special board (Chapter 344). Wisconsin was the first state to establish a system of state support for vocational, technical and adult education (Chapter 616, Laws of 1911). The law appropriated state aid for continuation, trade and evening schools; required every community with a population of 5,000 or more to establish an industrial education board; authorized the local boards to levy a property tax; and created an assistant for industrial education in the office of the State Superintendent of Public Instruction. It also created the State Board of Industrial Education.

Wisconsin was also the first state to set up apprenticeship agreements (Chapter 347, Laws of 1911) and require employers to release 14- to 16-year-olds for part-time attendance in continuation schools if such schooling was available (Chapter 505, Laws of 1911). These schools became schools for apprentices. Hours in class were to count as part of the total paid work hours. The schools, established through the work of Charles McCarthy, first director of the present-day Legislative Reference Bureau, emphasized general cultural and vocational education, as well as trade skills.

Due in part to the efforts of McCarthy and modeled after Wisconsin's vocational training programs, the U.S. Congress passed the Smith-Hughes Act in 1917, the first federal legislation specifically designed to promote vocational education. The act offered financial aid to states to help pay teachers' and administrators' salaries and provided funds for teacher training.



In Chapter 494, Laws of 1917, the Wisconsin Legislature changed the name of the State Board of Industrial Education to the State Board of Vocational Education, authorized it to employ a state director and designated it as the sole agency to work with the newly created federal board.

During the Great Depression, Wisconsin tightened its compulsory school attendance laws, which resulted in more 14- to 18-year-olds attending school. The demand for adult education also increased, as recognized by Chapter 349, Laws of 1937, which renamed the board the State Board of Vocational and Adult Education. During that same period, the vocational school in Milwaukee began to offer college transfer courses.

Events of the 1960s transformed the Wisconsin vocational-technical system into the postsecondary system of today. Federal legislation for vocational schools affected business education and emphasized training for the unemployed. The federal Vocational Education Act, passed in 1963, helped the local boards build new facilities. Chapter 51, Laws of 1961, authorized the board to offer associate degrees for 2-year technical courses. The 1965 Legislature passed Chapter 292, which required a system of vocational, technical and adult education (VTAE) districts covering the entire state by 1970 and changed the board's name to the State Board of Vocational, Technical and Adult Education. (Chapter 327, Laws of 1967, dropped "State" from the name.) College transfer programs were authorized in Madison, Milwaukee and Rhinelander.

As a result of the federal and state legislative changes in the 1960s, VTAE enrollments more than doubled to 466,000 between 1967 and 1982. The 1970s also saw significant increases in the number of associate degree programs. Other major statutory changes included the requirement that VTAE schools charge tuition and that they improve cooperation and coordination with the University of Wisconsin System. More recently, a greater emphasis has been placed on services to 16- to 18-year-old students.

In the past 2 decades, the system has increased its focus on lifelong learning; education for economic development; and services for groups that formerly had less access to education, including people in rural areas, women and minorities. Special emphasis has been given to assisting the unemployed, displaced homemakers and those with literacy problems.

1993 Wisconsin Act 399 renamed the VTAE system, changing it to the Technical College System, and designated the state board as the Technical College System Board. District VTAE schools became "technical colleges".

Statutory Council and Board

Council on Fire Service Training Programs: RON KASPERSKI (designated by administrator, Division of Emergency Management, Department of Military Affairs), TERRY HALVERSON (designated by secretary of commerce), NORMAN WIRTZ (designated by commissioner of insurance), JOHN W. FULCHER, DONALD PHILLIPS (members of paid fire departments); THOMAS BYCHNSKI, LARRY PLUMER, CHARLES RAYALA, JR., CATHY J. RIGDON (members of volunteer fire departments). (All except designated members are appointed by governor.)

The Council on Fire Service Training Programs advises the board on fire prevention training programs for members of volunteer and paid fire departments. The 9-member council includes 6 appointed members who serve staggered 6-year terms. The council was created by Chapter 327, Laws of 1967, repealed and recreated by 1995 Wisconsin Act 247, and its composition and duties are prescribed in Sections 15.947 (1) and 38.04 (9) of the statutes.

Telecommunications Retraining Board: JAMES A. URNESS (technical college system board representative); ROBERT BLESSINGTON, SANDRA LARSON, ANN MCNEARY (telecommunications industry union representatives); RAYMOND KEHM, JAMES LEONHART, vacancy (telecommunications companies representatives). (All are appointed by governor.)

The Telecommunications Retraining Board reviews the impact of changes in the telecommunications industry on workers and determines how to spend telecommunications retraining funds and maximize retraining opportunities for displaced telecommunications workers. A consortium of telecommunications companies contributes money to the retraining fund, which is the source of grants for eligible individuals employed by the contributors. The 7-member board was created by 1993 Wisconsin Act 496, and its composition and duties are prescribed in Sections 15.945 (2) and 38.42 of the statutes. It is scheduled to sunset June 30, 1999.



INDEPENDENT COUNCIL ATTACHED FOR BUDGETING, PROGRAM COORDINATION AND
RELATED MANAGEMENT FUNCTIONS**EDUCATIONAL APPROVAL COUNCIL**

Educational Approval Council: (No appointments will be made.)

Executive Secretary: JOSEPH L. DAVIS, 267-7733.

Mailing Address: P.O. Box 7874, Madison 53707-7874.

Location: 310 Price Place, Madison.

Telephone: (608) 266-1996.

Fax: (608) 266-1690.

Publications: Annual Report; Roles and Responsibilities; A Wisconsin Directory of For-Profit Postsecondary Schools.

Number of Employees: 8.00.

Total Budget 1995-96: \$528,900.

Total Budget 1996-97: \$548,500.

Statutory References: None (see 1996 Executive Orders 283 and 287).

Agency Responsibility: The Educational Approval Council must approve all postsecondary schools and courses of instruction that educate armed forces veterans and war orphans who receive assistance from the federal government. It also protects the public by inspecting and approving private for-profit postsecondary schools operating in Wisconsin. It judges the quality of proprietary schools for purposes of federal financial aid and serves as Wisconsin's state approval agency for these aid programs. In addition, the council approves and licenses in-state nonprofit postsecondary educational institutions incorporated after January 1, 1992, and all out-of-state nonprofit colleges that have a Wisconsin location or offer correspondence courses to state residents.

Originally formed by order of the governor in 1944, the legislature created the agency in Chapter 137, Laws of 1953, as the Governor's Educational Advisory Committee to approve and supervise schools and educational courses that trained veterans under various federal laws. A 1957 law directed the committee to certify those private vocational schools that offered adequate courses and to prevent fraud and misrepresentation. In 1964, the committee was given responsibility for licensing agents of private vocational schools. It was subsequently renamed the Educational Approval Council in 1965 and attached to the Department of Public Instruction by Chapter 214, Laws of 1967. The Educational Approval Board (renamed in 1967) was transferred to the Board of Vocational, Technical and Adult Education by Chapter 125, Laws of 1971. The Educational Approval Board was repealed by 1995 Wisconsin Act 27 and its responsibilities were transferred to a newly created Department of Education. The Wisconsin Supreme Court held the establishment of the Department of Education unconstitutional. To ensure proprietary schools continue to be regulated, Governor Tommy Thompson established the Educational Approval Council to assume the former duties of the Educational Approval Board in Executive Orders 283 and 287 (1996).



Department of TOURISM

Secretary of Tourism: RICHARD SPEROS, 266-2345.

Deputy Secretary: PATRICK GOSS, 266-8773.

Mailing Address: P.O. Box 7976, Madison 53707-7976.

Location: 6th Floor, 123 West Washington Avenue, Madison; new location by 1998: 2nd Floor, 201 West Washington Avenue, Madison.

Telephone: (608) 266-7621; Marketing Bureau: (608) 266-6755; Publications: (800) 432-8747; Travel Information: (800) 372-2737.

Fax: General: (608) 266-3403; Marketing Bureau: (608) 266-8213.

Internet Address: <http://tourism.state.wi.us>

Publications: Wisconsin Adventure Vacations; *Wisconsin African-American Heritage*; Wisconsin Auto Tours; Wisconsin Biking Guide; Wisconsin Event and Recreation Guide; *Wisconsin Heritage Traveler*; Wisconsin State Parks Visitors Guide.

Administrative Services, Bureau of: DIANE BROWN, director, 266-0820.

Customer Service, Bureau of: RENE DETTMAN, director, 267-7176.

Marketing Bureau: SARA KLAVAS, director, 266-3750, 202 State Street, Suite 203, Madison.

Media and Industry Services, Bureau of: JULIA HERTEL, director, 261-8195.

Film Office: STANLEY SOLHEIM, director, 267-3686.

Information Technology, Office of: DENNIS SIMONSON, director, 266-9974.

Number of Employees: 64.00.

Total Budget 1995-96: \$6,912,300.

Total Budget 1996-97: \$11,974,300.

Statutory References: Section 15.44; Chapter 41.

Agency Responsibility: The Department of Tourism promotes travel to Wisconsin's scenic, historic, artistic, educational and recreational sites. It stimulates the development of private commercial tourist facilities and assists cooperative projects between profit and nonprofit tourist ventures. The department encourages local tourist development through the Joint Effort Marketing Program, Heritage Tourism Program and the production of films in Wisconsin.

Organization: The department is directed by a secretary who is appointed by the governor with the advice and consent of the senate. The secretary appoints the bureau directors from the classified service.

Unit Functions: The *Bureau of Administrative Services* is responsible for the internal operations of the department, including accounting, budget and policy, payroll and purchasing services. It also administers the agency's human resources, safety, workspace and long-term planning functions.

The *Bureau of Customer Service* maintains and operates Wisconsin's 11 travel information centers, which are located at points of entry on the state's borders. The bureau also handles mailings and information requests for the agency.

The *Marketing Bureau* promotes and advertises Wisconsin as "the Midwest's premiere travel destination". Through market research, coordinated advertising, promotional campaigns and programs, and publications targeted to travelers' interests, the bureau is charged with attracting in-state and out-of-state tourists and associated vacation dollars.

The *Bureau of Media and Industry Services* is responsible for the department's community and public relations, as well as economic development and heritage tourism projects. The bureau works with private business to promote and develop commercial tourist facilities. It also provides assistance for cooperative projects between profit and nonprofit tourist ventures and encourages local tourism efforts.

The *Film Office* assists other state agencies and the private sector in the production of feature length films, commercials, advertisements and educational materials. It seeks to attract produc-



tion companies from out of state to boost state and local economies and to build name recognition for Wisconsin as a travel destination.

The *Office of Information Technology* provides information technology leadership and support for the department and the Wisconsin tourism industry. The office assists the department in the electronic distribution of information, telecommunications networking and Internet application development.

History: State tourism promotion originated in the Department of Natural Resources to encourage travel to state parks and commercial recreational sites. Tourism functions were transferred to the Department of Business Development by Chapter 39, Laws of 1975, which created the Division of Tourism as a statutory entity within the department. The division was absorbed into the Department of Development that was created by Chapter 361, Laws of 1979, through merger of the Department of Business Development and the Department of Local Affairs and Development. 1995 Wisconsin Act 27 reorganized the division as the Department of Tourism, effective January 1, 1996.

Statutory Council

Tourism, Council on: TOM DIEHL, *chairperson*; SENATORS BRESKE, ZIEN; REPRESENTATIVES DUEHOLM, SKINDRUD; RICHARD SPEROS (secretary of tourism), GEORGE L. VOGT (director, state historical society), GEORGE TZOUGROS (executive secretary, Arts Board); PETER CHAPMAN, JACK R. CULLEY, VALERIE DANIELS-CARTER, KELLI TRUMBLE GAVINSKI, WILLIAM T. GEIST, WILLIAM A. HANBURY, CHARLES J. METELKA, WILLIAM J. OTTO, GARY ROBERTS, CHARLES E. STOKKE, MICHAEL F. PITZO, JAMES VAN MATRE, CHERYL B. ZAUG. (All except *ex officio* members and legislators are appointed by governor.)

The 21-member Council on Tourism advises the secretary about tourism and encourages Wisconsin private companies to promote the state in their advertisements. The 14 appointed members serve 3-year terms, and 5 of them are elected by the council to assist the secretary in formulating a statewide marketing plan. Nominations for public member appointments must be sought from (but are not limited to) multicounty regional associations engaged in promoting tourism; statewide associations of businesses related to tourism; area visitor and convention bureaus; arts organizations; the Great Lakes Inter-Tribal Council, Inc., and other agencies with knowledge of American Indian tourism; and persons engaged in businesses catering to tourists. Nominees must have experience in marketing and promotion strategy and must represent the different geographical areas of the state and the diversity of the tourism industry. The council was created by 1987 Wisconsin Act 1 in the Department of Development and transferred to the Department of Tourism by 1995 Wisconsin Act 27. Its composition and duties are prescribed in Sections 15.447 (1) and 41.12 of the statutes.

INDEPENDENT UNITS ATTACHED FOR BUDGETING, PROGRAM COORDINATION AND RELATED MANAGEMENT FUNCTIONS BY SECTION 15.03 OF THE STATUTES

ARTS BOARD

Members: KATHRYN M. BURKE, *chairperson*; DEËTTE BEILFUSS-EAGER, JAMES E. CARLEY, GERALD F. DARROW, ROBERT D. HASTINGS III, LLOYD W. HERROLD, GLORIA M. KIRKING, RUTH LULL, SANDRA R. MILLS, JONATHAN L. OVERBY, JILL G. PELISEK, KATHLEEN A. PLAUTZ, PATRICIA H. RUSCH, EMMA TALEN, MARY ALICE WIMMER (appointed by governor).

Executive Director: GEORGE TZOUGROS, 267-2006.

Mailing Address: 1st Floor, State Administration Building, 101 East Wilson Street, Madison 53702.

Telephone: (608) 266-0190; TTY: (608) 267-9629.

Fax: (608) 267-0380.

Publications: Annual Report; *Arts in the Wisconsin Economy: An Economic Impact Study*; Basic Record Keeping Procedures Handbook for Grant Applications; Bulletin; Guide to Programs and Services; Statewide Arts Service Organization Directory; Wisconsin Art and Craft Fairs Directory; Wisconsin Gallery Listing; Wisconsin Performing Arts Presenters Network Guide; Wisconsin Touring Performing Artist Directory; Wisconsin's Local Arts Agencies Directory.

Number of Employees: 12.00.

Total Budget 1995-96: \$3,643,200.

Total Budget 1996-97: \$3,501,500.

Statutory References: Section 15.445 (1); Chapter 44, Subchapter III.

Agency Responsibility: The legislature directs the Arts Board to study and assist artistic and cultural activities in the state, assist communities in developing their own arts programs, and plan and implement funding programs for groups or individuals engaged in the arts.

As a funding agency, the board assists arts organizations and individual artists through a variety of programs designed to provide broad public access to the arts, strengthen the state's artistic resources, and create opportunities for individuals of exceptional talent. Financial support programs for individuals and organizations include apprenticeships, artists-in-education programs, challenge grants, community activities, fellowships, opportunity grants, program assistance and support, and programs for presenters. The board also provides matching grants to local arts agencies and municipalities through the Wisconsin Regranting Program.

The board aids Wisconsin's artistic community through an information program that includes workshops, conferences, research projects and publications. The board regularly produces and distributes materials on local, state, and national arts activities for both the arts community and the general public. It arranges for the governor's official portrait, and it selects the artwork placed in state buildings as required by law.

The board's 15 members, who serve staggered 3-year terms, must be state residents with a concern for the arts, and each geographic quadrant of the state must be represented by at least 2 members. The board selects the executive director from outside the classified service. The board was created by Chapter 90, Laws of 1973, and attached to the Department of Administration, to succeed the Governor's Council on the Arts, established by the governor in 1963. 1995 Wisconsin Act 27 attached the board to the Department of Tourism.

KICKAPOO RESERVE MANAGEMENT BOARD

Members: DON COLEMAN, RONALD M. JOHNSON, JACK ROBINSON, REBECCA ZAHM (residents of specified municipalities and school districts within watershed); RICHARD A. LOWE, GEORGE E. NETTUM (watershed residents outside specified units); DONALD R. FIELD (education representative), SANDRA K. HEIDEL (recreation and tourism representative), DAVID R. KLUESNER (environmental advocate) (nonresidents of watershed). (All members are appointed by governor. The appointments of the 3 nonresidents must have senate consent.)

Executive Director: MARCY WEST.

Mailing Address: 505 North Mills Street, La Farge 54639.

Telephone: (608) 625-2960.

Number of Employees: 2.00.

Total Budget 1995-96: \$94,500.

Total Budget 1996-97: \$189,100.

Statutory References: Sections 15.07 (1) (b) 20., 15.445 (2), 41.40 and 41.41.

Agency Responsibility: The board manages lands in the Kickapoo Valley Reserve to preserve and enhance its environmental, scenic and cultural features; provides facilities for the use and enjoyment of visitors; and promotes the reserve as a destination for vacationing and recreation. The reserve consists of state-owned land in the Kickapoo River Valley in southwestern Wisconsin. Subject to the approval of the governor and the Department of Tourism, the board may purchase land for inclusion in the reserve and trade land in the reserve under certain conditions. If authorized by law, the board may construct and maintain facilities in the reserve.

The board also may lease land for purposes consistent with the management of the reserve or for agricultural purposes; authorize, license, regulate, and collect and spend revenue from private concessions in the reserve; accept gifts, grants and bequests; and cooperate with and provide matching funds to nonprofit groups organized to provide assistance to the reserve.

The board may not authorize mining in the reserve or on any land acquired by the board and may not sell land that is in the reserve. It does have authority to promulgate rules about use of



the waters, land and facilities under its jurisdiction, and the Department of Tourism is responsible for enforcement of state laws and the board rules relating to the reserve.

The governor appoints the 9 members of the board for staggered 3-year terms. Four members must be residents of villages, towns and school districts in the immediate vicinity of the reserve, as defined in Section 15.445 (2) (b) 1, Wisconsin Statutes, and 2 must be residents of the Kickapoo River watershed outside of the immediate vicinity of the reserve. These 6 members are nominated by their local governments or school boards. Various state agencies must appoint nonmember liaisons to the board, and the board must request that the Winnebago Tribal Council appoint a nonmember liaison. The board appoints the executive director from outside the classified service. The board was created as the Kickapoo Valley Governing Board by 1993 Wisconsin Act 349 and attached to the Department of Administration. 1995 Wisconsin Act 27 attached the board to the Department of Tourism, and it was renamed by 1995 Wisconsin Act 216.

LOWER WISCONSIN STATE RIVERWAY BOARD

Members: WILLIAM S. LUNDBERG, 2 vacancies (appointed by governor with senate consent); GLEN E. BENEKER (Crawford Co.), JAMES H. AMUNDSON (Dane Co.), L.B. NICE (Grant Co.), BRADLEY M. GLASS (Iowa Co.), TODD SCHWINGLE (Richland Co.), JAMES I. STAFF (Sauk Co.). (County representatives are nominated by respective county boards and appointed by governor.)

Executive Director: MARK CUPP, 202 North Wisconsin Avenue, P.O. Box 187, Muscoda 53573-0187.

Telephone: (608) 739-3188; (800) 221-3792.

Fax: (608) 739-4263.

Number of Employees: 2.00.

Total Budget 1995-96: \$106,600.

Total Budget 1996-97: \$106,600.

Statutory References: Section 15.445 (3); Chapter 30, Subchapter IV.

Agency Responsibility: The Lower Wisconsin State Riverway Board is responsible for protecting and preserving the scenic beauty and natural character of the riverway. The board reviews permit applications for buildings, walkways, timber harvests, utility facilities, bridges and other structures in the riverway and issues permits for activities that meet established standards.

All 9 board members serve staggered 3-year terms. The 6 county representatives must be either an elected official or resident of a city or village that abuts the Lower Wisconsin State Riverway or of a town located at least in part in the riverway. The other 3 members represent recreational user groups and may not reside in any of the 6 specified counties. The board was created by 1989 Wisconsin Act 31 and attached to the Department of Natural Resources. 1995 Wisconsin Act 27 attached the board to the Department of Tourism.

STATE FAIR PARK BOARD

Members: MICHAEL T. HUNTER, *chairperson*; MARCELLA RUSSELL, *vice chairperson*; DENNIS A. MARKOS, *secretary*; RICHARD SPEROS (secretary of tourism), JOSEPH E. TREGONING (designated by secretary of agriculture, trade and consumer protection); JAMES BRADLEY, MARY E. HENKE. (All except *ex officio* members or their designees are appointed by governor with senate consent.)

State Fair Park Director: RICHARD J. BJORKLUND, (414) 266-7020.

Management and Public Safety Services, Bureau of: ROGER BEAN, *director and State Fair Park assistant director*, (414) 266-7025.

Program Services, Bureau of: vacancy, *director*.

Director of Development: STANLEY SHAW, (414) 266-7029.

Mailing Address: Wisconsin State Fair Park, 8100 West Greenfield Avenue, P.O. Box 14990, West Allis 53214-0990.

Telephone: (414) 266-7000; (800) 884-FAIR (recorded announcement of events).



Fax: (414) 266-7007.

E-mail: wsp@wsp.state.wi.us

Internet Address: <http://www.wsp.state.wi.us>

Publications: *A Brief History of the Wisconsin State Fair*; WSFP Update (semi-annual); annual non-fair event schedule; monthly non-fair event schedule; fair brochures, daily events schedule, and premium books.

Number of Employees: 45.70.

Total Budget 1995-96: \$13,032,000.

Total Budget 1996-97: \$13,723,400.

Statutory References: Section 15.445 (4); Chapter 42.

Agency Responsibility: The State Fair Park Board is directed to manage the State Fair Park and supervise its use for fairs, exhibits or promotional events for agricultural, commercial, educational and recreational purposes; to lease or license the property's use for other purposes when not needed for public purposes; and to charge reasonable rents and fees for use of the premises. The board is also directed to develop new facilities at State Fair Park and to provide a permanent location for an annual Wisconsin State Fair, major sports events, agricultural and industrial expositions and other programs of civic interest.

Organization: The State Fair Park Board consists of 7 members, 2 *ex officio* and 5 appointed for staggered 5-year terms. The park director is appointed by the board from outside the classified service. All other full-time and seasonal employees are hired from within the classified service.

History: Beginning with the first Wisconsin State Fair at Janesville in October 1851, the event has served as a showcase for Wisconsin agriculture and commerce. It has been operationally self-financing since 1935. The State Agricultural Society, which sponsored the first fair, continued to operate it through 1897. In that year, Chapter 301 created the Wisconsin State Board of Agriculture and placed operation of the fair under its control. When the Department of Agriculture was created in 1915, the state fair became part of the new department.

In Chapter 149, Laws of 1961, the independent Wisconsin Exposition Department, headed by a 7-member board, was created to manage the fair and the park's year-round operation. Under the 1967 executive branch reorganization, the exposition department became the Wisconsin Exposition Council in the Department of Local Affairs and Development.

Chapter 125, Laws of 1971, created a 3-member State Fair Park Board, appointed by the governor and attached to the Department of Agriculture for administrative purposes. The 1985 Legislature increased board membership to 5, specified 5-year terms of service and required senate confirmation of the governor's nominees (Chapter 20).

In 1990, as provided by 1989 Wisconsin Act 219, the State Fair Park Board became an independent body. 1995 Wisconsin Act 27 attached the board to the Department of Tourism, beginning January 1, 1996.

Over the years, the location of the state fair was debated and even its continued existence was in doubt. At various times between 1851 and 1885, Fond du Lac, Janesville, Madison, Milwaukee and Watertown hosted the fair. Milwaukee was chosen as the state fair site from 1886 through 1891, and the fairs held there were so successful that a permanent site was purchased in what is now West Allis, a Milwaukee suburb. That site, first used for the 1892 fair, is included in the state fair's location today.

Several studies published during the 1960s recommended that the fair be moved to a larger site in the Milwaukee area. Chapter 125, Laws of 1971, decided the fair would remain at its site (partially in West Allis, partially in Milwaukee), with updated or new facilities being funded through self-amortizing state bonds. Since then, the State Fair Park Board has spent more than \$15 million for remodeling and new construction. Individuals, organizations and corporations have spent an additional \$5 million to build permanent concessions and other improvements to the grounds.

The Pettit National Ice Center at the north end of the grounds, opened on January 1, 1993, is the only enclosed Olympic-sized skating oval in the country and one of only 6 in the world. Its



construction was financed by \$9.3 million in state funds and another \$4 million in private-sector donations. As required by Section 42.11, Wisconsin Statutes, the board leases the center to a nonprofit corporation, which is responsible for the operation and maintenance of the facility.

Today, State Fair Park draws more than 2 million visitors to its events and activities each year, and the Wisconsin State Fair, with attendance of more than 900,000, remains the state's oldest and largest annual event.



City kids try their hand at cow milking during the 11-day Wisconsin State Fair. Wisconsin annually showcases its best animals and agriculture for almost a million visitors at State Fair Park in West Allis. (Department of Commerce)



**Department of
TRANSPORTATION**

Secretary of Transportation: CHARLES H. THOMPSON, 266-1113.

Deputy Secretary: TERRENCE D. MULCAHY, 266-1113.

Executive Assistant: GENE KUSSART, 266-1114.

Special Assistant: ERNIE WITTEW, 267-5254.

General Counsel, Office of: JAMES S. THIEL, *director*, 266-8810.

Public Affairs, Office of: LINDA THELKE, *director*, 266-7744.

Mailing Address: P.O. Box 7910, Madison 53707-7910.

Location: Hill Farms State Transportation Building, 4802 Sheboygan Avenue, Madison.

Internet Address: <http://www.dot.state.wi.us>

Publications: Biennial Report; Five-Year Airport Improvement Program (annual); Motorcyclist Handbook for Wisconsin; *Rustic Roads*; Six-Year Highway Improvement Program; Traffic Safety Reporter (quarterly); *Trucking Wisconsin Style*; Wisconsin Aeronautical Chart (annual); Wisconsin Airport Directory (odd years); Wisconsin Alcohol Traffic Facts; Wisconsin Aviation Bulletin (quarterly); Wisconsin Commercial Drivers' Manual; Wisconsin Drivers' Book; Wisconsin Highway Map; Wisconsin Motorists' Handbook and Study Guide; Wisconsin Traffic Crash Facts (annual).

Number of Employees: 3,929.27.

Total Budget 1995-96: \$1,516,913,200.

Total Budget 1996-97: \$1,505,783,000.

Statutory References: Sections 15.46, 15.465 and 15.467; Chapters 80, 84-86, 110, 114 and 340-351.

Business Management, Division of: JOYCE S. GELDERMAN, *administrator*, 266-2878.

Automation Services, Bureau of: MICHAEL LEGGETT, *director*, 266-2090.

Financial Services, Bureau of: CYNTHIA A. MOREHOUSE, *director*, 266-7023.

Human Resource Services, Bureau of: MICHAEL LOVEJOY, *director*, 266-2914, TTY: 267-0259 (personnel).

Management Services, Bureau of: ALICE M. MOREHOUSE, *director*, 267-9618.

Motor Vehicles, Division of: ROGER CROSS, *administrator*, 266-2234; JANE CZESHINSKI, *deputy administrator*, 266-2234.

Driver Services, Bureau of: BEVERLY LARSON, *director*, 266-2237.

Motor Vehicle Field Services, Bureau of: DAVID KUSSOW, *director*, 266-2743.

Vehicle Services, Bureau of: MARTHA GERTSCH, *director*, 266-2235.

Motor Vehicle District Managers:

District 1: DENNIS NUSSBAUM, (608) 246-7540, 2001 Bartillon Drive, Madison 53707-2614.

District 2: GARY GUENTHER, (414) 929-3720, 833 South Rolling Meadows Drive, Fond du Lac 54936-2067.

District 3: DONALD REINCKE, (608) 789-4630, 9477 Highway 16 East, Onalaska 54650-8527.

District 4: vacancy, (715) 359-7398, 5301 Rib Mountain Drive, Wausau 54401-7562.

District 5: RICHARD GIETZEL, (715) 234-3773, 113 North Main Street, Rice Lake 54868.

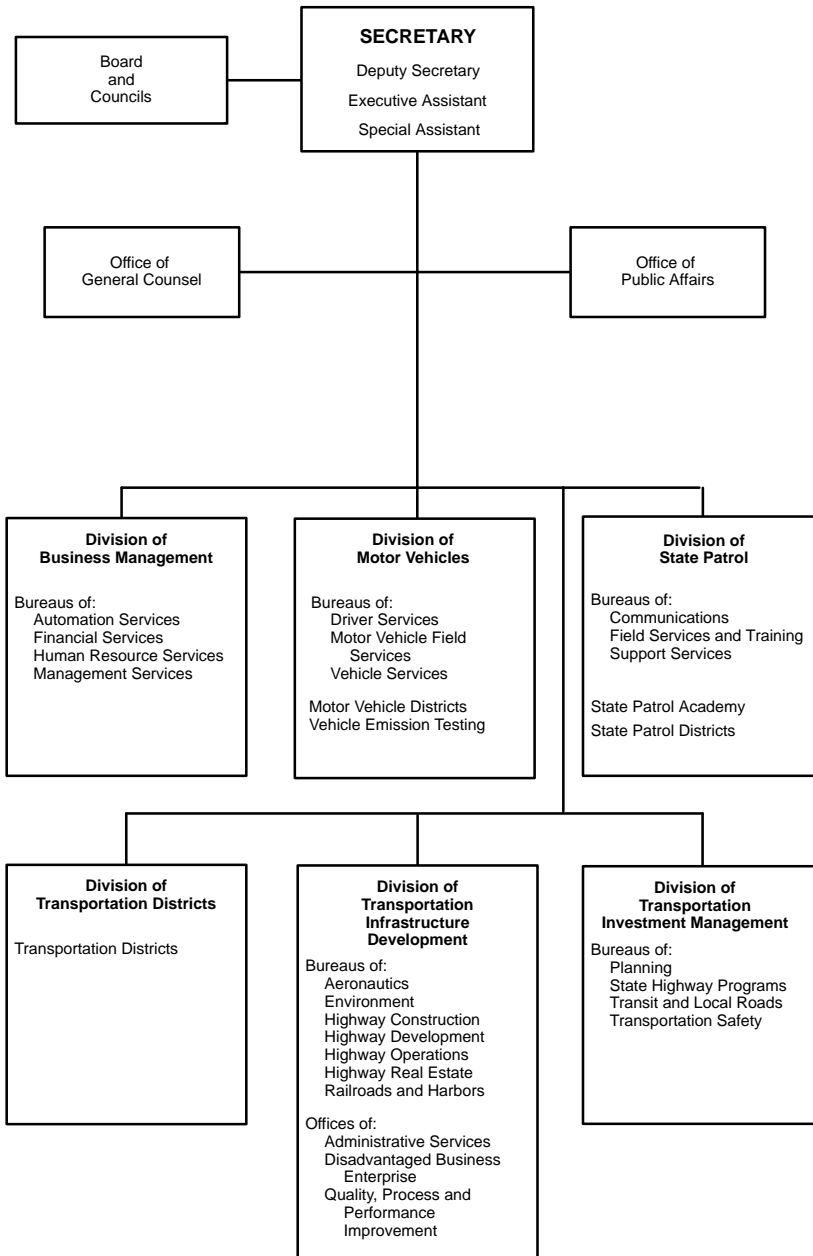
District 6: LINDA LEWIS, (414) 492-5731, 942 Vanderperren Way, Green Bay 54304-5344.

District 7: ROBERT TRIBBEY, (414) 548-5611, Suite D, 2000 Pewaukee Road, Waukesha 53188-2446.

District 8: vacancy, (414) 227-4890, 819 North 6th Street, Milwaukee 53203-1606.

Vehicle Emission Testing (Southeast Wisconsin): (800) 242-7510.

DEPARTMENT OF TRANSPORTATION



State Patrol, Division of: WILLIAM L. SINGLETARY, *administrator*, 267-7102; ROGER F. HLAVACKA, *deputy administrator*, 267-7102.

Division mailing address: P.O. Box 7912, Madison 53707-7912.

Telephones: General: (608) 266-3212; Road Condition Reports: Madison: (608) 246-7580; Milwaukee: (414) 785-7140; elsewhere in Wisconsin: (800) 762-3947.

Fax: 267-4495.

Communications, Bureau of: vacancy, *director*, 266-0184.

Field Services and Training, Bureau of: DAVID L. SCHUMACHER, *director*, 266-3908.

Support Services, Bureau of: vacancy, *director*, 266-3909.

Wisconsin State Patrol Academy: MICHAEL A. MOORE, *director of training*, (608) 269-2500;

Fax: (608) 269-5681; South 10th Avenue, Gate 15, Fort McCoy 54656-5000.

State Patrol District Captains:

District 1: ALVIN L. BISHOP, (608) 246-3220; Fax: (608) 246-7593;
4845 East Washington Avenue, Madison 53704-3294.

District 2: ROBERT A. BEREITER, (414) 785-4700; Fax: (414) 785-4723;
21115 Highway 18, Waukesha 53186-2985.

District 3: WILBERT C. DEGUIRE, (414) 929-3700; Fax: (414) 929-2770;
P.O. Box 984, Fond du Lac 54936-0984.

District 4: TERRY D. BENGTON, (715) 845-1143; Fax: (715) 848-9255;
2805 Martin Avenue, Wausau 54401-7172.

Highway 29 Team: JOE OLSON, DON GUTKOWSKI, *team leaders*, (715) 421-8303;
Fax: (715) 421-8014; 2811 8th Street South, Wisconsin Rapids 54494.

District 5: DOUGLAS VAN BUREN, (608) 374-0513; (608) Fax: 374-0599;
P.O. Box 604, Tomah 54660-0604.

District 6: MARSHA M. WILEY, (715) 839-3800; Fax: (715) 839-3841;
5005 Highway 53 South, Eau Claire 54701-8846.

District 7: RICHARD C. FANKHAUSER, (715) 635-2141; Fax: (715) 635-6373;
W7102 Green Valley Road, Spooner 54801.

Transportation Districts, Division of: DANIEL B. PRITCHARD, *administrator*, 266-2392; JOHN H. EVANS, *deputy administrator*, 266-3048; Fax: 267-3356; TTY: 261-8200.

Mail: 4802 Sheboygan Avenue, Room 417, P.O. Box 7856, Madison 53707-7856.

Transportation District Directors:

District 1: THOMAS E. CARLSEN, *director*, (608) 246-3800; THOMAS J. BATCHELOR, *deputy director*, (608) 246-7911; Fax: (608) 246-7996; TTY: (608) 246-5385;
2101 Wright Street, Madison 53704-2583.

District 2: LES FAFARD, *director*, (414) 548-5902; LYNN W. EHLENBECK, *deputy director*; (414) 548-5884; Fax: (414) 548-5662; TTY: (414) 548-8801;
2000 Pewaukee Road, Suite A, P.O. Box 798, Waukesha 53187-0798.

District 3: GEORGE MCLEOD, *director*, (414) 492-5643; Fax: (414) 492-5640;
TTY (414) 492-5673; 944 Vanderperren Way, P.O. Box 28080, Green Bay 54324-0080.

District 4: RICHARD G. BONNEVILLE, *director*, (715) 421-8300; Fax: (715) 423-0334;
TTY: (715) 421-8018; 1681 Second Avenue South, P.O. Box 8021, Wisconsin Rapids 54495-8021. Highway 29 Team: JOE OLSON, DON GUTKOWSKI, *team leaders*, (715) 421-8303; Fax: (715) 421-8014; 2811 8th Street South, Wisconsin Rapids 54494.

District 5: ALAN L. LORENZ, *director*, (608) 785-9022; Fax: (608) 785-9969;
TTY: (608) 789-7862; 3550 Mormon Coulee Road, La Crosse 54601-6767.

District 6: THOMAS MCCARTHY, *director*, (715) 836-2891; Fax: (715) 836-2807;
TTY: (715) 836-6578; 718 West Clairemont Avenue, Eau Claire 54701-5108.

District 7: DANIEL R. GRASSER, *director*, (715) 365-3490; Fax: (715) 365-5780;
TTY: (715) 365-5719; Hanson Lake Road, P.O. Box 777, Rhineland 54501-0777.

District 8: EUGENE McDONALD, *director*, (715) 392-7925; Fax: (715) 392-7863;
TTY Relay Service: (800) 947-3529; 1701 North 4th Street, Superior 54880-1068.



Transportation Infrastructure Development, Division of: JAMES D. GRUENDLER, *administrator*; 267-7673; MICHAEL A. CASS, *deputy administrator*; 267-7111; Fax: 264-6667.

Aeronautics, Bureau of: ROBERT W. KUNKEL, *director*; 266-3351; Fax: 267-6748.

Environment, Bureau of: CAROL D. CUTSHALL, *director*; 266-9626; Fax: 266-7818.

Highway Construction, Bureau of: GARY C. WHITED, *director*; 266-3290; Fax: 266-4859.

Highway Development, Bureau of: JOHN E. HAVERBERG, *director*; 266-0075; Fax: 266-8265.

Highway Operations, Bureau of: DAVID I. VIETH, *director*; 267-8999; Fax: 267-7856; PETER F. RUSCH, *State Traffic Engineer*; 266-0459; Fax: 261-6295.

Highway Real Estate, Bureau of: NANCY J. MAIESKI, *director*; 266-2915; Fax: 267-0307.

Railroads and Harbors, Bureau of: JOSEPH W. DRESSER, *director*; 266-2941; Fax: 267-3556.

Administrative Services, Office of: MICHAEL A. CASS, *division deputy administrator*; 267-7111; Fax: 264-6667.

Disadvantaged Business Enterprise, Office of: EUGENE S. JOHNSON, *director*; 267-9527;

Fax: 266-7818; Milwaukee Support Services: (414) 438-4583; Fax: (414) 438-5389.

Quality, Process and Performance Improvement, Office of: JAMES S. ETMANCZYK, *director*; 266-2602; Fax: 264-6667.

Transportation Investment Management, Division of: JAMES W. VAN SISTINE, *administrator*; 266-9860; Fax: 267-0294; P.O. Box 7913, Madison 53707-7913.

Planning, Bureau of: KEN LEONARD, *director*; 267-7754.

State Highway Programs, Bureau of: ROBERT ST. CLAIR, *director*; 266-9495.

Transit and Local Roads, Bureau of: vacancy, *director*.

Transportation Safety, Bureau of: DAVID MANNING, *director*; 266-0402.

Agency Responsibility: The Department of Transportation is responsible for the planning, promotion and protection of all transportation systems in the state. Its major responsibilities involve highways, motor vehicles, motor carriers, traffic law enforcement, railroads, waterways, mass transit and aeronautics.

The department works with several federal agencies in the administration of federal transportation aids. It also cooperates with departments at the state level in travel promotion, consumer protection, environmental analysis, and transportation services for elderly and handicapped persons.

Organization: The secretary is appointed by the governor with the advice and consent of the senate and has overall management responsibility for the department. The secretary appoints the deputy secretary, executive assistant and all division administrators from outside the classified service.

Unit Functions: The *Division of Business Management* plans and administers the department's programs for accounting and auditing, data processing, human resources, purchasing, vehicle fleet, facilities and other management services.

The *Division of Motor Vehicles* administers programs for titling and registering vehicles; examines and licenses drivers, commercial driving instructors and vehicle salespersons; certifies commercial driver examiners; licenses motor carriers, commercial driving schools, vehicle dealers, manufacturers and distributors; and investigates consumer complaints about vehicle sales and trade practices. The division is responsible for the traffic violation and vehicle registration system and the vehicle emissions inspection program. It maintains records of titled and registered vehicles, security interests on vehicles and motor vehicle operators' driving records. It also administers reciprocal trucking agreements with other states and the Canadian provinces and provides traffic accident data to law enforcement officials, highway engineers, and traffic safety and media representatives. The division operates 8 district offices.

The *Division of State Patrol* promotes highway safety by enforcing state traffic laws regarding motor vehicles and motor carriers. The State Patrol also has criminal law enforcement powers and can assist local law enforcement agencies by providing emergency police services. It operates the statewide mobile data communications network, which is available to local law enforcement agencies, and it makes annual inspections of Wisconsin's school buses and ambulances.

The division oversees 7 district offices and a law enforcement training academy open to all federal, state, county, local and tribal law enforcement officers.

The *Division of Transportation Districts* consists of a central office staff and 8 district offices. The division is responsible for the planning, design, construction and maintenance of the state trunk highway system, which includes nearly 12,000 miles of the 108,000 miles of public roads and streets in Wisconsin. The district offices serve as liaison between the department and local government agencies. They work with local representatives to define community transportation needs, and they facilitate two-way communication by reporting local needs to the department and informing local communities about the department's policies and activities.

The *Division of Transportation Infrastructure Development* is responsible for uniform statewide direction in the planning, design, construction and operation of Wisconsin's airports, harbors, highways and railroads. It advises other divisions regarding engineering, economic, environmental, and social standards and practices. It also monitors the quality and efficiency of the department's various programs and assures compliance with federal and state laws and regulations. The division administers all state and federal funding for airport, railroad and harbor development projects in Wisconsin.

The *Division of Transportation Investment Management* oversees statewide, regional and local planning for highways, railroads, harbors, airports and mass transit and promotes a multimodal transportation system to best serve the mobility and economic needs of state citizens and businesses. The division directs data collection, manages state road aids and other transportation assistance programs, and directs safety planning and public outreach programs.

History: The history of the Department of Transportation mirrors the evolution of twentieth century transportation. The Highway Commission was created when Chapter 337, Laws of 1911, authorized state aid for public highways. Later, Chapter 410, Laws of 1939, consolidated registration, licensing, inspection, enforcement and highway safety promotion in the Motor Vehicle Department. The legislature established the Aeronautics Commission in 1945 and directed it to cooperate with the federal government and other states to "prepare for the generally expected extensive expansion of aviation following the termination of World War II."



Governor Tommy Thompson examines the controls of the Danish-made Flexliner passenger train at the Milwaukee Amtrak station. The Flexliner was brought to Wisconsin as part of a two-year national demonstration tour to provide test runs on the Milwaukee-Chicago corridor. (Department of Transportation)



The Department of Transportation was created by Chapter 75, Laws of 1967, which merged the Highway Commission, the Aeronautics Commission, and the Motor Vehicle Department. Chapter 500, Laws of 1969, required 3 divisions within the department: aeronautics, highways, and motor vehicles. The department was strengthened by Chapter 29, Laws of 1977, which vested accountability at the departmental, instead of divisional, level and gave the secretary, rather than the governor, the authority to appoint division heads. The secretary was also allowed to reorganize the department with the governor's approval.

Statutory Board and Councils

Aeronautics, Council on: RALPH C. JENSEN, *chairperson*; PERRY ARMSTRONG, ARTHUR BORCHARDT, HARVEY BRANDAU, JAMES JOHNSON (appointed by governor).

The Council on Aeronautics advises the secretary of transportation about the development of aviation in the state. The 5 members are selected to serve staggered 6-year terms, based on their knowledge of and interest in aeronautics. The council was created as an independent Aeronautics Commission by Chapter 513, Laws of 1945. It was renamed the Council on Aeronautics and its duties were changed from administrative to advisory when it was transferred to the newly created Department of Transportation by Chapter 75, Laws of 1967. Its current duties and composition are prescribed in Sections 15.09 (5) and 15.467 (2) of the statutes.

Highway Safety, Council on: ROBERT J. YOUNG (public member), *chairperson*; JOHN SYBELDON (public member), *vice chairperson*; RANDY THIEL (state officer), *secretary*; SENATORS ADELMAN, LASEE; REPRESENTATIVES OTTE, RYBA, SYKORA; BILL ESBECK, JERRY L. HANCOCK, PETER F. RUSCH, vacancy (state officers); ROBERT W. CHRISTIAN, LAVERNE E. HERMANN, ARNOLD WIDDES (public members). (All except legislators are appointed by governor.)

The Council on Highway Safety advises the secretary about highway safety matters. The 15-member council includes 2 senators and 3 assembly representatives who serve on standing committees that deal with transportation matters. The other 10 members, who serve staggered 3-year terms, include 5 state officers with transportation duties and 5 public members. The council was originally created in the Office of the Governor by Chapter 276, Laws of 1969, and was moved to the Department of Transportation by Chapter 34, Laws of 1979. Its composition and duties are prescribed in Sections 15.467 (3) and 85.07 (2) of the statutes.

Rustic Roads Board: THOMAS P. SOLHEIM, *chairperson*; EVAN ZANTOW, *vice chairperson*; SENATOR CLAUSING; REPRESENTATIVE BRANDEMUEHL; WILBUR PETROSKEY, CLETUS ROANHOUSE, HOMER ROSA, vacancy (nominated by Wisconsin Counties Association); HOWARD MEAD, FRANK TERBILCOX. (Nonlegislative members are appointed by secretary of transportation.)

The Rustic Roads Board processes county and municipal applications and promulgates rules for the rustic roads system, which is designed to create and preserve rustic and scenic roads for vehicular, bicycle and pedestrian travel. The 10-member board includes the chairpersons of the senate and assembly committees with jurisdiction over transportation matters. The board's 8 nonlegislative members serve staggered 4-year terms, and at least 4 of them must be nominees of the Wisconsin Counties Association. The board was created by Chapter 142, Laws of 1973, and its composition and duties are prescribed in Sections 15.465 (2) and 83.42 of the statutes.

Traffic Law Enforcement, Council on: Inactive.

The Council on Traffic Law Enforcement makes recommendations to the governor about the utilization of enforcement agencies, equipment and communications. The council has access to the records of any enforcement agency and may call upon officers and their supervisors for information and advice. Its 17 members include 2 senators and 2 assembly representatives from the majority and minority parties in each house; 5 community leaders in business, labor and industry; and 8 law enforcement officers. Four officer alternates are also named. Nonlegislative members serve staggered 3-year terms. The council was created as the Governor's Council on Traffic Law Enforcement by Chapter 232, Laws of 1965, and moved to the Department of Transportation by Chapter 75, Laws of 1967. Its composition and duties are prescribed in Sections 15.467 (1) and 110.99 of the statutes.



Uniformity of Traffic Citations and Complaints, Council on: JOYCE GELDERMAN (designated by secretary of transportation), *chairperson*; DAVID SCHUMACHER (Department of Transportation law enforcement member); RALPH NEFF (designated by Wisconsin Sheriffs and Deputy Sheriffs Association); JOHN CRAM (designated by County Traffic Patrol Association); ROY JOHNSON (designated by Chiefs of Police Association); GERALD MOWRIS (designated by State Bar of Wisconsin); KATHY JOHNSON (designated by Wisconsin Council of Safety); MICHAEL FINLEY (designated by Wisconsin District Attorneys' Association); TODD MEURER (designated by Judicial Conference); GARY L. CARLSON (designated by Director of State Courts).

The Council on Uniformity of Traffic Citations and Complaints recommends forms used for traffic violations. The council's 10 members represent specified law enforcement agencies and legal interests. The council was created by Chapter 292, Laws of 1967, as the Uniform Traffic Citation and Complaint Committee and renamed by 1985 Wisconsin Act 145. Its composition and duties are prescribed in Sections 15.467 (4) and 345.11 of the statutes.

UNIVERSITY OF WISCONSIN SYSTEM

Board of Regents: MICHAEL W. GREBE, *president*; SHELDON B. LUBAR, *vice president*; JOHN T. BENSON (superintendent of public instruction), JONATHAN B. BARRY (designated by president, Technical College System Board); PATRICK G. BOYLE, JOANNE BRANDES, BRADLEY DEBRASKA, KATHLEEN J. HEMPEL, RUTH MARCENE JAMES, VIRGINIA R. MACNEIL, TOBY E. MARCOVICH (senate confirmation pending), FREDERICK E. MOHS (senate confirmation pending), SAN W. ORR, JR., GERARD A. RANDALL, JR., ALFRED D. SIMONE, JAY L. SMITH, GRANT E. STASZAK (senate confirmation pending) (student recommended by student government). (All except *ex officio* members are appointed by governor with senate consent.)

Secretary to the Board: JUDITH A. TEMBY, 1860 Van Hise Hall, 1220 Linden Drive, Madison 53706-1557, (608) 262-2324.

System Administration

1220 Linden Drive, Madison 53706-1557

General Telephone: (608) 262-2321

President of the University of Wisconsin System: KATHARINE C. LYALL, 1720 Van Hise Hall, 1220 Linden Drive, Madison 53706-1557, (608) 262-2321.

Senior Vice President for Academic Affairs: DAVID J. WARD, 1624 Van Hise Hall, 262-3826.

Senior Vice President for Administration: KEITH R. SANDERS, 1730 Van Hise Hall, 262-4048.

Vice President for Finance: MARCIA W. BROMBERG, 1752 Van Hise Hall, 262-1311.

Vice President for Physical Planning and Development: PAUL L. BROWN, 1762 Van Hise Hall, 262-6132.

Vice President for University Relations: DAVID W. OLIEN, 1708 Van Hise Hall, 262-0766.

Mailing Address: Central administrative offices for the UW System and the UW Centers are located in Madison. Individual universities and 2-year UW Centers can be reached by writing them directly. Administrative offices for UW-Extension are in Madison; extension representatives are located at each county seat.

Publications: Administrative Directory; Biennial and annual reports; *Fact Book*; *Introduction to the University of Wisconsin System*; *Wisconsin Ideas*; unit bulletins, catalogs, reports, circulars; periodicals and books.

Number of Employees: 27,427.16.

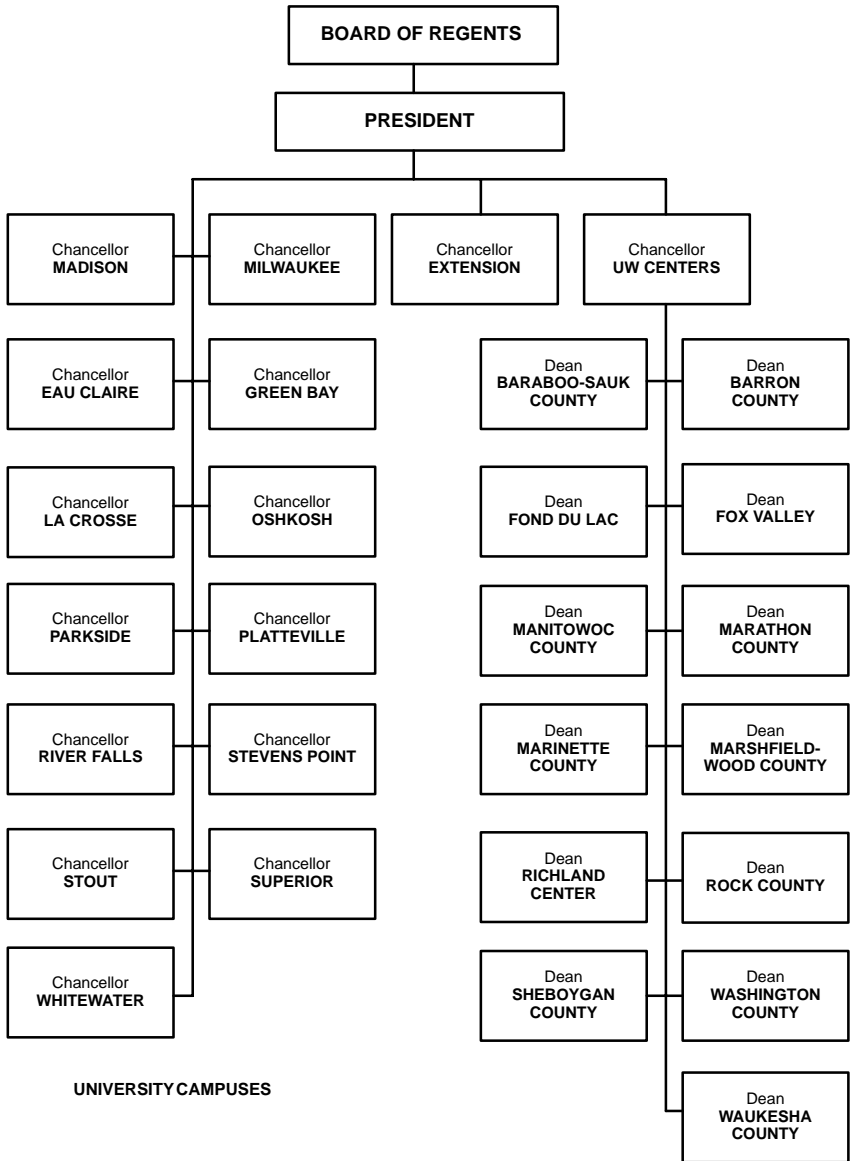
Total Budget 1995-96: \$2,627,950,600.

Total Budget 1996-97: \$2,392,525,100.

Constitutional Reference: Article X, Section 6.

Statutory References: Section 15.91; Chapter 36.

UNIVERSITY OF WISCONSIN SYSTEM



UNIVERSITY CAMPUSES

TWO-YEAR CENTERS

Units attached for administrative purposes under Sec. 15.03:
Pharmacy Internship Board
Radioactive Waste Review Board



UW-Madison

750 Peterson Building, Madison 53706-1380
 General Telephone: (608) 262-1234

- Chancellor:* DAVID WARD, 161 Bascom Hall, 262-9946.
Provost and Vice Chancellor for Academic Affairs: JOHN WILEY, 150 Bascom Hall, 262-1304.
Vice Chancellor for Administration: JOHN TORPHY, 100 Bascom Hall, 263-2467.
Vice Chancellor for Legal and Executive Affairs: MELANY STINSON NEWBY, 361 Bascom Hall, 263-7400.
Interim Dean of Agricultural and Life Sciences: NEAL JORGENSEN, 140 Agriculture Hall, 262-4930.
Dean of Business: ANDREW POLICANO, 5110 Grainger Hall, 262-5220.
Dean of Education: W. CHARLES READ, 123 Education Building, 262-6137.
Dean of Engineering: JOHN G. BOLLINGER, 2610 Engineering Hall, 262-3482.
Dean of the Graduate School: VIRGINIA HINSHAW, 333 Bascom Hall, 262-1044.
Dean of Human Ecology: HAMILTON I. MCCUBBIN, 1300 Linden Drive, 262-4847.
Dean of International Studies and Programs: DAVID M. TRUBEK, 268 Bascom Hall, 262-9833.
Dean of Law: DANIEL O. BERNSTINE, 5211C Law Building, 262-0618.
Dean of Letters and Science: PHILLIP R. CERTAIN, 102 South Hall, 263-2303.
Director of Libraries: KENNETH FRAZIER, 372 Memorial Library, 262-2600.
Dean of Medical School: PHILIP M. FARRELL, 1205 Medical Sciences Center, 263-4910.
Dean of Nursing: VIVIAN LITTLEFIELD, H6/150 Clinical Science Center, 263-5155.
Dean of Pharmacy: MELVIN WEINSWIG, 2340 Chamberlin Hall, 262-1414.
Dean of Veterinary Medicine: DARYL BUSS, 2015 Linden Drive West, 263-6716.
Dean of Students: MARY ROUSE, 75 Bascom Hall, 263-5700.
Dean of Continuing Studies: HOWARD MARTIN, Room 203, 905 University Avenue, 262-5821.
Chair of the Academic Staff Executive Committee: WILLIAM STEFFENHAGEN, 108A Animal Health and Biomedical Sciences Building, 262-1036.
Chair of the University Committee: EVELYN HOWELL, 25E Agriculture Hall, 263-6964.
Secretary of the Faculty: DAVID MUSOLF, 133 Bascom Hall, 262-3956.
Interim Director of Admissions: KEITH WHITE, 140A Peterson Building, 262-0464.
Registrar: DONALD J. WERMERS, 130C Peterson Building, 262-3964.

UW-Milwaukee

P.O. Box 413, Milwaukee 53201-0413
 General Telephone: (414) 229-1122

- Chancellor:* JOHN H. SCHROEDER, 202 Chapman Hall, 229-4331.
Provost/Vice Chancellor: KENNETH L. WATERS, 215 Chapman Hall, 229-4501.
Assistant Chancellor, Administrative Affairs: DONALD G. MELKUS, 310 Chapman Hall, 229-4461.
Assistant Chancellor, Student Affairs: WILLIAM W. MAYRL, 136 Chapman Hall, 229-4038.
Assistant Chancellor, University Relations: SANDRA HOEH-LYON, 180A Chapman Hall, 229-4035.
Interim Dean, College of Engineering and Applied Sciences: KENNETH F. NEUSEN, 524 Engineering and Mathematical Sciences Building, 229-4126.
Dean, College of Letters and Science: MARSHALL R. GOODMAN, 218A Holton Hall, 229-5895.
Dean, School of Allied Health Professions: FREDERICK PAIRENT, 897 Enderis Hall, 229-4712.
Dean, School of Architecture and Urban Planning: ROBERT GREENSTREET, 241 Architecture and Urban Planning Building, 229-4016.

Dean, School of Business Administration: CHARLES KRONCKE, N425 Business Administration Building, 229-6256.

Dean, School of Education: WILLIAM B. HARVEY, 595 Enderis Hall, 229-4181.

Dean, School of Fine Arts: CATHERINE A. DAVY, A284 Fine Arts Center, 229-4762.

Dean, Graduate School and Research: GEORGE W. KEULKS, 247 Mitchell Hall, 229-5483.

Dean, School of Library and Information Science: MOHAMMED M. AMAN, 1193 Enderis Hall, 229-4709.

Dean, School of Nursing: SHARON E. HOFFMAN, 767B Cunningham Hall, 229-4189.

Dean, School of Social Welfare: JAMES BLACKBURN, 1095 Enderis Hall, 229-4400.

Interim Dean, Division of Outreach and Continuing Education Extension: MARK KRUEGER, 161 West Wisconsin Avenue, 53203, 227-3326.

Director of Enrollment Services: BETH L. WECKMUELLER, 200 Mellencamp Hall, 229-6164.

Special Assistant to the Chancellor for Development and Alumni Relations: JON HELMINIAK, 227 Alumni House, 229-5862.

Secretary of the University: MARILYN E. MILLER, 225 Mitchell Hall, 229-5988.

UW-Eau Claire

Schofield Hall, P.O. Box 4004, Eau Claire 54702-4004

General Telephone: (715) 836-2637

Chancellor: LARRY SCHNACK, 836-2327.

Provost and Vice Chancellor, Academic Affairs: MARJORIE SMELSTOR, 836-2320.

Assistant Chancellor, Business Affairs: CHARLES BAUER, 836-3279.

Assistant Chancellor, Information and Technology Management: DAVID HART, 836-5262.

Dean, College of Arts and Sciences: CARL HAYWOOD, 836-2542.

Dean, College of Business: V. THOMAS DOCK, 836-5509.

Dean, College of Professional Studies: RONALD N. SATZ, 836-3400.

Dean of Students: ANN LAPP, 836-5626.

Director of Admissions: ROGER GROENEWOLD, 836-5415.

Registrar: SUE SHELTON, 836-4524.

UW-Green Bay

2420 Nicolet Drive, Green Bay 54311-7001

General Telephone: (920) 465-2000

Chancellor: MARK L. PERKINS, 465-2207.

Provost and Vice Chancellor for Academic Affairs: HOWARD COHEN, 465-2334.

Associate Provost for Student Services/Dean of Students: SUE KEIHN, 465-2152.

Assistant Chancellor, Business and Finance: THOMAS MAKI, 465-2210.

Assistant Chancellor, Planning and Budget: DEAN RODEHEAVER, 465-2039.

Assistant Vice Chancellor for Enrollment Management: MYRON VAN DE VEN, 465-2111.

Dean, Liberal Arts and Sciences: CAROL POLLIS, 465-2476.

Dean, Professional Studies and Outreach: NANCY KAUFMAN, 465-2171.

Associate Dean, Graduate Studies and Research: RONALD STEIGLITZ, 465-2711.

Executive Director, Marketing and University Communication: IRENE KIEFER, 465-2526.

Executive Director, University Advancement: STEVE SWAN, 465-2074.

Registrar: SALLY MANCOSKE, 465-2063.



UW-La Crosse

1725 State Street, La Crosse 54601-9959
 General Telephone: (608) 785-8000

Chancellor: JUDITH L. KUIPERS, 785-8004.

Interim Provost/Vice Chancellor: LEO M. LAMBERT, 785-8007.

Assistant Chancellor, Administrative Services: LARRY LEBIECKI, 785-8020.

Assistant Chancellor, Advancement and External Relations: LOU MARKWITH, 785-8489.

Assistant Chancellor, Budget Planning and Control: SUE SCHOENBERGER, 785-8010.

Interim Assistant to the Chancellor for Affirmative Action and Diversity: AL S. THOMPSON, JR., 785-8541.

Assistant to the Chancellor: JIM MORGAN, 785-8595.

Associate Vice Chancellor, Human Resources: JENNIFER WILSON, 785-8013.

Interim Associate Vice Chancellor, Information Technology Services: DALE MONTGOMERY, 785-8662.

Associate Vice Chancellor-Dean for Student Development: THOMAS L. HOOD, 785-8151.

Dean, College of Business Administration: REX FULLER, 785-8091.

Dean, College of Health, Physical Education and Recreation: DOUGLAS N. HASTAD, 785-8157.

Dean, College of Liberal Studies: SANDRA FLAKE, 785-8113.

Dean, College of Science and Allied Health: CHARLES SCHELIN, 785-8218.

Dean of Graduate Studies: LEO LAMBERT, 785-8124.

Director, Admissions: TIMOTHY R. LEWIS, 785-8939.

Registrar: DIANE SCHUMACHER, 785-8751.

UW-Oshkosh

800 Algoma Boulevard, Oshkosh 54901
 General Telephone: (920) 424-1234

Chancellor: JOHN E. KERRIGAN, 424-0200.

Special Assistant to the Chancellor: THOMAS R. GROGAN, 424-0424.

Provost/Vice Chancellor: VICKI LORD LARSON, 424-0300.

Associate Vice Chancellor: WILLIAM C. WRESCH, 424-1410.

Assistant Chancellor, Student Affairs: ELLIOTT L. GARB, 424-4000.

Assistant Vice Chancellor, Academic Support: MURIEL A. HAWKINS, 424-3080.

Assistant Vice Chancellor, Graduate School and Research: PATRICIA J. KOLL, 424-1223.

Assistant Vice Chancellor, Information Technology: JOHN F. BERENS, 424-3334.

Executive Director, Administrative Services: JOEL C. EDSON, 424-3030.

Dean, College of Business Administration: E. ALAN HARTMAN, 424-1424.

Dean, College of Education and Human Services: DONALD W. MOCKER, 424-3322.

Dean, College of Letters and Science: MICHAEL ZIMMERMAN, 424-1210.

Dean, College of Nursing: MERRITT E. KNOX, 424-3089.

Dean of Students: SUSAN K. YOWELL, 424-3100.

Acting Director, Admissions: JILL M. ENDRIES, 424-0228.

Registrar: DANIEL J. EDELBECK, 424-3007.

UW-Parkside

P.O. Box 2000, Kenosha 53141-2000
 General Telephone: (414) 595-2345

Chancellor: ELEANOR J. SMITH, 595-2211.

Provost/Vice Chancellor: JOHN M. OSTHEIMER, 595-2261.

Assistant Chancellor, Administration and Fiscal Affairs: WILLIAM W. STREETER, 595-2141.

Assistant Chancellor, Student Affairs: G. GARY GRACE, 595-2598.

Assistant Chancellor, University Relations: MARILYN FOSTER KIRK, 595-2431.

Acting Dean, College of Arts and Sciences: LARRY DUETSCH, 595-2188.

Acting Dean, School of Business and Technology: ROGER HUDSON, 595-2243.

Dean, Graduate Programs: RONALD SINGER, 595-2144.

Director of Admissions Processing: CHARLES E. MURPHY, 595-2355.

Registrar: SUSAN A. JOHNSON, 595-2237.

UW-Platteville

1 University Plaza, Platteville 53818-3099
 General Telephone: (608) 342-1491

Chancellor: DAVID J. MARKEE, 342-1234.

Provost and Vice Chancellor: RALPH W. CURTIS, 342-1261.

Interim Associate Vice Chancellor: JUDITH PAUL, 342-1262.

Assistant Chancellor, Business Affairs: STEPHEN ZIELKE, 342-1226.

Assistant Chancellor for Student Affairs: SHARON WALKER, 342-1854.

Dean of Admissions and Enrollment Management: RICHARD SCHUMACHER, 342-1125.

Dean, College of Business, Industry, Life Science and Agriculture: THOMAS LINDAHL, 342-1547.

Dean, College of Engineering, Mathematics and Science: DENNIS HORN, 342-1561.

Dean, College of Liberal Arts and Education: CHARLOTTE STOKES, 342-1151.

Dean, School of Graduate Studies: JUDITH PAUL, 342-1262.

Registrar: EDWARD DENEEN, 342-1321.

UW-River Falls

410 South Third Street, River Falls 54022
 General Telephone: (715) 425-3911

Chancellor: GARY A. THIBODEAU, 425-3201.

Provost/Vice Chancellor: ROBERT L. MILAM, 425-3700.

Vice Chancellor, Administration and Finance: VIRGIL NYLANDER, 425-3737.

Dean, College of Agriculture, Food and Environmental Sciences: GARY E. ROHDE, 425-3841.

Dean, College of Arts and Sciences: NEAL PROCHNOW, 425-3366.

Dean, College of Education and Graduate Studies: KATHLEEN DALY, 425-3774.

Dean of Student Affairs: ROGER A. BALLOU, 425-3711.

Director of Admissions: ALAN TUCHTENHAGEN, 425-3100.

Interim Registrar: JUDY GEORGE, 425-3342.



UW-Stevens Point

Room 213 Old Main, 2100 Main Street, Stevens Point 54481-3897
 General Telephone: (715) 346-0123

Chancellor: THOMAS F. GEORGE, 346-2123.

Acting Provost/Vice Chancellor: WILLIAM MEYER, 346-4686.

Associate Vice Chancellor, Academic Programs and Grant Support Services: DAVID STASZAK, 346-3693.

Associate Vice Chancellor, Curriculum and Program Support: DONNA GARR, 346-3738.

Associate Vice Chancellor, Personnel and Budget: BOB BEEKON, 346-2311.

Assistant Vice Chancellor, University Extension: MARVIN VAN KEKERIX, 346-3642.

Assistant Chancellor, Business Affairs: GREGORY DIEMER, 346-2641.

Assistant Chancellor, Student Affairs: HELEN GODFREY, 346-2481.

Dean, College of Fine Arts and Communication: GERARD MCKENNA, 346-4920.

Dean, College of Letters and Science: JUSTUS PAUL, 346-4224.

Dean, College of Natural Resources: ALAN HANEY, 346-2955.

Dean, College of Professional Studies: JOAN NORTH, 346-3169.

Acting Dean, Information Technology and Director of Network Services: BRUCE STAAL, 346-3612.

Director, Admissions and High School Relations/Registrar: DAVID ECKHOLM, 346-2441 (Admissions and High School Relations); 346-3818 (Registration and Records).

UW-Stout

P.O. Box 790, Menomonie 54751-0790
 General Telephone: (715) 232-1431

Chancellor: CHARLES W. SORENSEN, 232-2441.

Provost/Vice Chancellor, Academic and Student Affairs: GEORGE DEPUY, 232-2421.

Vice Chancellor, Administrative and Student Life Services: JAN G. WOMACK, 232-1683.

Associate Vice Chancellor: ESTHER FAHM, 232-2421.

Associate Vice Chancellor for Graduate College: ROBERT SEDLAK, 232-2421.

Dean, College of Arts and Sciences: GERANE DOUGHERTY, 232-2437.

Dean, College of Human Development: ED BIGGERSTAFF, 232-2410.

Dean, College of Technology/Engineering and Management: BRUCE SIEBOLD, 232-1325.

Dean of Students: JOSEPH LARKIN, 232-1181.

Director of Admissions and School Relations: CYNTHIA JENKINS, 232-1233.

Registrar: CHARLES KELL, 232-2121.

UW-Superior

1800 Grand Avenue, Old Main Room 212, Superior 54880-2898
 General Telephone: (715) 394-8101

Chancellor: JULIUS E. ERLNBACH, 394-8221.

Provost/Vice Chancellor for Academic Affairs: HAL S. BERTILSON, 394-8447.

Director of Admissions: JON WOJCIECHOWSKI, 394-8396.

Director, Graduate Studies: NANCY MINAHAN, 394-8296.

Registrar: BARBARA A. ERICKSON, 394-8218.



UW-Whitewater

Administration Building, 800 West Main Street, Whitewater 53190

General Telephone: (414) 472-1234

Chancellor: H. GAYLON GREENHILL, 472-1918.*Provost/Vice Chancellor for Academic Affairs:* LARRY DAVIS, 472-1672.*Assistant Chancellor, Administrative Affairs:* JAMES W. FREER, 472-1922.*Assistant Chancellor for Student Affairs:* ROGER B. LUDEMAN, 472-1051.*Associate Vice Chancellor:* LARRY W. DAVIS, 472-1181.*Assistant Vice Chancellor for Enrollment Services:* TORI MCGUIRE, 472-1570.*Dean, College of Arts and Communications:* JOHN H. HEYER, 472-1221.*Dean, College of Business and Economics:* JOSEPH S. DOMITRZ, 472-1343.*Dean, College of Education:* JEFFREY C. BARNETT, 472-1101.*Dean, College of Letters and Sciences:* HOWARD L. ROSS, 472-1621.*Dean, Graduate School, Continuing Education and Extension:* RICHARD LEE, 472-1100.*Assistant Vice Chancellor for Enrollment Services:* TORI MCGUIRE, 472-1570.*Executive Director of Admissions:* LON SHERMAN, 472-1460.*Registrar:* JAMES STEWART, 472-1570.

Shared learning is a hallmark of undergraduate chemistry studies at the University of Wisconsin-Eau Claire. Here a professor discusses a project involving the antifungal drug, Amphotericine B, with two student research assistants planning careers in science or medicine. (University of Wisconsin-Eau Claire)



UW Centers

780 Regent Street, P.O. Box 8680, Madison 53708-8680

- Interim Chancellor:* HOWARD THOYRE, (608) 262-1783.
Provost/Vice Chancellor: MARIE A. WUNSCH, (608) 263-1794.
Associate Vice Chancellor: MARGARET M. CLEEK, (608) 263-1794.
Assistant Chancellor, Administrative Services: CHRISTOPHER FORREST, (608) 263-1638.
Assistant to the Chancellor: ELIZABETH W. SCHOENFELD, (608) 263-5238.
Dean, Baraboo-Sauk County: AURAL UMHOEFER, (608) 356-8351; 1006 Connie Road, Baraboo 53913-1098.
Dean, Barron County: MARY SOMERS, (715) 234-8176; 1800 College Drive, Rice Lake 54868-2497.
Dean, Fond du Lac County: JUDY GOLDSMITH, (920) 929-3602; 400 Campus Drive, Fond du Lac 54935-2998.
Dean, Fox Valley: JAMES PERRY, (920) 832-2610; 1478 Midway Road, Menasha 54952-8002.
Dean, Manitowoc County: ROLAND BALDWIN, (920) 683-4710; 705 Viebahn Street, Manitowoc 54220-6699.
Dean, Marathon County: G. DENNIS MASSEY, (715) 261-6223; 518 South 7th Avenue, Wausau 54401-5396.
Dean, Marinette County: SIDNEY BREMER, (715) 735-4300; 750 West Bay Shore Street, Marinette 54143-4299.
Dean, Marshfield-Wood County: CAROL MCCART, (715) 389-6538; 2000 West 5th Street, Marshfield 54449-0150.
Dean, Richland Center: DION KEMPTHORNE, (608) 647-6186; 1200 Highway 14 West, Richland Center 53581-1399.
Dean, Rock County: JANE CRISLER, (608) 758-6522; 2909 Kellogg Avenue, Janesville 53546-5699.
Dean, Sheboygan County: MARK TIERNO, (920) 459-6610; 1 University Drive, Sheboygan 53081-4789.
Dean, Washington County: JOEL RODNEY, (414) 335-5203; 400 University Drive, West Bend 53095-3699.
Dean, Waukesha County: MARY KNUDTEN, (414) 521-5435; 1500 University Drive, Waukesha 53188-2799.
Registrar: PATRICIA MCGREGOR, (608) 262-9652.

UW-Extension

432 North Lake Street, Madison 53706-1498

General Telephone: (608) 262-3980

- Interim Chancellor:* ALBERT J. BEAVER, 262-3786.
Vice Chancellor/Provost: KEVIN P. REILLY, 262-6151.
Special Assistant to the Chancellor: MARK LEDERER, 263-7678.
Dean, Continuing Education Extension: MICHAEL OFFERMAN, 262-1035.
Dean, Cooperative Extension: CARL O'CONNOR, 263-2775.
Director, Budget Office: ROBERT ANDERSEN, 262-4830.
Director, Extension Communications and Information Technology: LARRY DICKERSON, 262-1470.
Director, Information Systems: RON KRAEMER, 263-6012.
Secretary of the Faculty/Academic Staff: KEN KAJER, 262-4387.

Officers and Units Required by Statute

State Cartographer: THEODORE KOCH, (608) 262-3065, 160 Science Hall, 550 North Park Street, Madison 53706-1404.

State Geologist: JAMES ROBERTSON, (608) 262-1705, Geological and Natural History Survey, 3817 Mineral Point Road, Madison 53705-5100.

Agricultural Safety and Health Center: MARK PURSCHWITZ, (608) 262-1180, *director*, 230 Agricultural Engineering Building, 460 Henry Mall, Madison 53706.

Center for Environmental Education: RANDY CHAMPEAU, *director*, (715) 346-4973, 110 College of Natural Resources, 403 Learning Resources Center, Stevens Point 54481.

Geological and Natural History Survey: JAMES ROBERTSON, *state geologist*, (608) 262-1705, 3817 Mineral Point Road, Madison 53705-5100.

Psychiatric Research Institute: NED KALIN, *director*, (608) 265-6685, 6001 Research Park Boulevard, Madison 53719.

Robert M. La Follette Institute of Public Affairs: DONALD KETTL, *director*, (608) 262-3581, 1225 Observatory Drive, Madison 53706.

State Soils and Plant Analysis Laboratory: SHERRY COMBS, *director*, (608) 262-4364, 5711 Mineral Point Road, Madison 53705.

Center for Urban Land Economics Research: KERRY VANDELL, *director*, (608) 262-5800, 975 University Avenue, Room 5262, Grainger Hall, Madison 53706.

School of Veterinary Medicine: DARYL BUSS, *dean*, (608) 263-6716, 2015 Linden Drive West, Madison 53706-1102.

Agency Responsibility: The prime responsibilities of the University of Wisconsin System are teaching, public service and research. The system provides postsecondary academic education for more than 152,000 students, including over 129,000 full-time undergraduates.

Organization: The UW System consists of 13 degree-granting universities, 13 two-year centers, and statewide extension programs. The UW-Madison and the UW-Milwaukee offer bachelor's, master's, doctoral, and professional degrees. The 11 other universities in the UW System that offer associate, bachelor's and master's degree programs are: UW-Eau Claire, UW-Green Bay, UW-La Crosse, UW-Oshkosh, UW-Parkside, UW-Platteville, UW-River Falls, UW-Stevens Point, UW-Stout, UW-Superior, and UW-Whitewater.

The UW Centers serve local and commuter students by providing freshman-sophomore university course work that is transferable to degree-granting campuses. In addition, the centers offer general education associate degrees. Center faculty and staff are employed by the UW System, but UW Center campuses and buildings are owned by the municipalities and/or counties in which they are located.

The UW-Extension provides classroom and correspondence degree credit courses and offers continuing education and wide-ranging public service programs.

The 17-member Board of Regents of the University of Wisconsin System establishes policies to govern the system and plans for the future of public higher education in Wisconsin. The 14 citizen members of the board serve staggered 7-year terms; the student member serves a 2-year term; 2 members are *ex officio*.

The board appoints the president of the UW System, the chancellors of the 13 universities, the chancellor of the UW-Extension, the chancellor of the UW Centers and the deans of the 13 centers. All appointees serve at the pleasure of the board. The board also sets admission standards, reviews and approves university budgets, and establishes the regulatory framework within which the individual units operate.

Unit Functions: The President of the University of Wisconsin System has full executive responsibility for system operation and management. The president carries out the duties prescribed by statute and implements the policies established by the board of regents; manages and coordinates operation of the system's administrative offices and units; and exercises fiscal control through budget development, management-planning programs, and coordination and evaluation of the academic programs on all campuses.





An agronomy class initiates the new \$2.6 million D.C. Smith Greenhouse at the University of Wisconsin-Madison. The instructional greenhouse is the UW's latest in high-tech plant science facilities. (University of Wisconsin-Madison)

Each chancellor serves as executive head of a particular program or campus, administers board policies under the direction of the system's president and is accountable to the board of regents. Subject to board policy, the chancellors, in consultation with their faculties, design curricula and set degree requirements; determine academic standards and establish grading systems; define and administer institutional standards for faculty peer evaluation; screen candidates for appointment, promotion and tenure; administer auxiliary services; and control all funds allocated to or generated by their respective programs.

History: Today's UW System is the product of the 1971 merger of 2 existing university boards, the Board of Regents of the University of Wisconsin and the Board of Regents of the State Universities, and the institutions they governed.

From earliest times, Wisconsin lawmakers recognized the need for a tax-supported university. The territorial legislature passed laws in 1836, 1838 and 1839 regarding establishment and location of a university, and Article X, Section 6, of the state constitution, ratified in 1848, provided for a state university at or near the seat of state government. Chapter 20, Laws of 1848, which implemented the constitutional provision, delegated university administration to a board of regents and classes began in 1849. Critical to the university's early development was Chapter 114, Laws of 1866, which reorganized the board of regents, expanded its authority and authorized the governor to appoint the regents. The 1866 reorganization provided for instruction in agriculture on the Madison campus and an experimental farm, thereby making the university eligible, as Wisconsin's land grant institution, to receive the proceeds derived from sale of lands granted by the federal government to support agricultural education and research.

The State Universities originated with Chapter 82, Laws of 1857, which provided funds for a system of 2-year normal schools to train teachers and created the Board of Regents of Normal Schools. The first normal school opened at Platteville in 1866 and the ninth 50 years later at Eau Claire. In 1929, the 9 normal schools became "state teachers colleges" and were authorized to



offer baccalaureate degree programs. They were renamed state colleges in 1951 and state universities in 1964. Chapter 75, Laws of 1967, renamed the governing body, designating it the Board of Regents of State Universities.

Chapter 100, Laws of 1971, mandated the merger of Wisconsin's 2 systems of public higher education to form the University of Wisconsin System. Chapter 335, Laws of 1973, recreated Chapter 36 of the statutes and provided a single statutory charter to govern public higher education in Wisconsin.

UNIVERSITY OF WISCONSIN
ASSOCIATED ORGANIZATION CREATED BY STATUTE

LABORATORY OF HYGIENE

Laboratory of Hygiene Board: PAUL BROWN (designated by president of UW System), MEGAN CHRISTIANSEN (designated by secretary of agriculture, trade and consumer protection), JOHN CHAPIN (designated by secretary of health and family services), MARY JO KOPECKY (designated by secretary of natural resources), JOHN TORPHY (designated by chancellor, UW-Madison); KENNETH BALDWIN (employee of Department of Health and Family Services appointed by secretary), JACK SULLIVAN (employee of Department of Natural Resources appointed by secretary); GEORGE MILLION (local health department representative); JAY F. SCHAMBERG (physician representing clinical laboratories); EDWARD F. TREICK (private environmental testing laboratory representative). Nonvoting member: RONALD H. LAESSIG (director, Laboratory of Hygiene). (Representatives not otherwise appointed or designated are appointed by governor.)

Director: RONALD H. LAESSIG.

Deputy Director and Medical Director: STANLEY L. INHORN.

Associate Director: CINDY J. MCINTOSH.

Mailing Address: 465 Henry Mall, Madison 53706-1578.

Telephones: (608) 262-1293; Customer service: (800) 442-4618; Administrative office: (608) 262-3911; Wisconsin Occupational Health Laboratory: (608) 263-6550, (800) 446-0403; Proficiency Testing Program: (608) 833-1770, (800) 462-5261.

Fax: (608) 262-3257.

Publications: Newborn Screening Newsletter; Proficiency Testing Newsletter; *Results* (WSLH Newsletter); annual report; reference manual; survey newsletters.

Number of Employees: 298.75.

Total Budget 1995-96: \$20,441,700.

Total Budget 1996-97: \$20,171,300.

Statutory References: Sections 15.07 (1), 15.915 (2) and 36.25 (11).

Agency Responsibility: The Laboratory of Hygiene provides complete laboratory services for appropriate state agencies and local health departments in the areas of water quality, air quality, public health and contagious diseases. It performs laboratory tests and consultation for physicians, health officers, local agencies, private citizens and resource management officials to prevent and control diseases and environmental hazards. The laboratory provides clinical and environmental proficiency testing programs to help laboratories in Wisconsin and other states meet federal laboratory testing requirements. As part of the UW-Madison, the laboratory provides facilities for teaching and research in the fields of public health and environmental protection.

The laboratory operates under the direction and supervision of the 11-member Laboratory of Hygiene Board. The majority of the members represent agencies concerned with public health and the environment. The 3 board members appointed by the governor serve 3-year terms.

History: Chapter 344, Laws of 1903, created the Laboratory of Hygiene at the University of Wisconsin to examine water supplies, investigate contagious and infectious diseases, and function as the official laboratory of the State Board of Health. The executive branch reorganization act of 1967 extended the laboratory's services to the Department of Natural Resources.



INDEPENDENT UNIT ATTACHED FOR BUDGETING, PROGRAM COORDINATION AND RELATED MANAGEMENT FUNCTIONS BY SECTION 15.03 OF THE STATUTES

PHARMACY INTERNSHIP BOARD

Pharmacy Internship Board: CYNTHIA BENNING, JOHN HOFMANN (members of Pharmacy Examining Board appointed by examining board); LARRY BOH, JOSEPH WIEDERHOLT (UW School of Pharmacy faculty members appointed by dean); BRIAN JENSEN, MARY JANE JONES (appointed by Wisconsin Pharmacists Association); TOM ENGELS (public member appointed by governor with senate consent).

Director: PAUL ROSOWSKI.

Mailing Address: 1336 Chamberlin Hall, University of Wisconsin-Madison, 425 North Charter Street, Madison 53706-1515.

Telephone: (608) 262-3717.

Statutory References: Sections 15.08, 15.915 (3) and 36.25 (20).

Agency Responsibility: The Pharmacy Internship Board sets standards for internship sites and preceptors, determines duration of internships, approves school-sponsored experience programs for internship credit and licenses interns. Activities conducted by the 7-member board include: development of competency objectives, preceptor training conferences, intern seminars and placement services; publication of intern manuals and newsletters; evaluation of pharmacy sites for inclusion in the program; interstate verification, evaluation, and accreditation of internship practice; and liaison and consultation services to the UW School of Pharmacy and the Pharmacy Examining Board. Except for those appointed by the Pharmacy Examining Board, board members serve staggered 5-year terms. Board members must be state residents, and they cannot serve more than 2 consecutive terms. No member may be an officer, director or employe of a private organization which promotes or furthers the pharmacy profession. The board determines qualifications for and appoints a full-time director of pharmacy internship from outside the classified service.

History: Originally created by Chapter 351, Laws of 1965, as the Pharmacy Internship Commission, the agency was renamed a board and placed under the Department of Regulation and Licensing by Chapter 75, Laws of 1967. Chapter 34, Laws of 1979, attached the board to the UW System.

Department of VETERANS AFFAIRS

Board of Veterans Affairs: LEWIS B. HARNED, *chairperson*; BERNARD BOYLE, *vice chairperson*; JOHN A. SCOCOS, *secretary*; TED L. DUCKWORTH, JACQUELYN J. LAHN, RICHARD E. MARBES, JEROME M. NELSON. (All are veterans appointed by governor with senate consent.)

Secretary of Veterans Affairs: RAYMOND G. BOLAND, 266-1315.

Deputy Secretary: ROBERT A. COCROFT, 266-2256.

Executive Assistant: CHARLES B. HOSLET, 266-3081.

Internal Auditor: JOHN F. TRIMBELL, 266-1843.

Legal Counsel: JOHN ROSINSKI, 266-7916.

Policy, Planning and Budget, Office of: KENNETH R. ABRAHAMSEN, *director*, 266-0117.

Public Relations Director: STEVE OLSON, 267-3582.

Wisconsin Veterans Museum: RICHARD H. ZEITLIN, *director*, 266-1009.

Administration, Division of: DAVID LARSEN, *administrator*, 266-3947.

Administrative Services, Bureau of: JOYCE KREY, *director*, 266-3344.

Fiscal Services, Bureau of: ROGER GRAHAM, *director*, 266-3916.

Information Systems, Bureau of: ANTHONY CAPPOZZO, *director*, 267-7207.



Veterans Home, Division of: STEPHEN T. HANDRICH, *administrator/commandant*, (715) 258-4241; MICHAEL W. STEAD, *deputy commandant*, (715) 258-4251; STEPHEN L. STEAD, *adjutant*, (715) 258-4249; Wisconsin Veterans Home, King 54946-0600.

Activities Services, Bureau of: CATHY LEAVERTON, (715) 258-5586.

Admissions and Discharges, Bureau of: MARIAN BOUSHLEY, (715) 258-4252.

Dietary Services, Bureau of: GUY ALLEN, (715) 258-5586.

Engineering/Physical Plant, Bureau of: DOUG TYNDALL, (715) 258-4242.

Financial Services, Bureau of: DENNIS ZWIERS, (715) 258-4248.

Materials Management, Bureau of: JAMES BARBER, (715) 258-4242.

Medical Services, Bureau of: PAUL DRINKA, (715) 258-4240.

Nursing Services, Bureau of: MARY TENANT, (715) 258-5586.

Personnel Services, Bureau of: JOHN PETERS, (715) 258-4244.

Social Services, Bureau of: SHERRY KELLEY, (715) 258-5586.

Veterans Programs, Division of: RICHARD DEMOYA, *administrator*, 266-1378.

Claims, Bureau of: MELVIN E. HALL, *director*, VA Regional Office, Building 6, Room CB28, 5000 West National Avenue, Milwaukee 53295-0001, (414) 382-5207.

Collections, Bureau of: DENNIS NELSON, *director*, 266-8951.

Loans and Grants, Bureau of: LAWRENCE E. DEWANE, *director*, 266-1309.

Veterans Services, Bureau of: THOMAS GILBERT, *director*, 266-2648.

Mailing Address: P.O. Box 7843, Madison 53707-7843.

Location: 30 West Mifflin Street, Madison.

Telephone: (608) 266-1311.

Internet Address: <http://badger.state.wi.us/agencies/dva/index.html>

Publications: *The Courier*; *CVSO Digest*; *WDVA Update*; *Wisconsin's Role in World War II*; brochures on the Wisconsin Veterans Museum (Madison), the Wisconsin Veterans Home (King) and state veterans' benefits and eligibility requirements.

Number of Employees: 804.60.

Total Budget 1995-96: \$109,898,100.

Total Budget 1996-97: \$113,810,800.

Statutory References: Section 15.49; Chapter 45.

Agency Responsibility: The Department of Veterans Affairs provides educational and economic assistance to eligible veterans of the U.S. Armed Forces and their dependents through loan and grant programs. It also operates the Wisconsin Veterans Home at King, the Wisconsin Veterans Museum in Madison, and the Southern Wisconsin Veterans Memorial Cemetery near Union Grove.

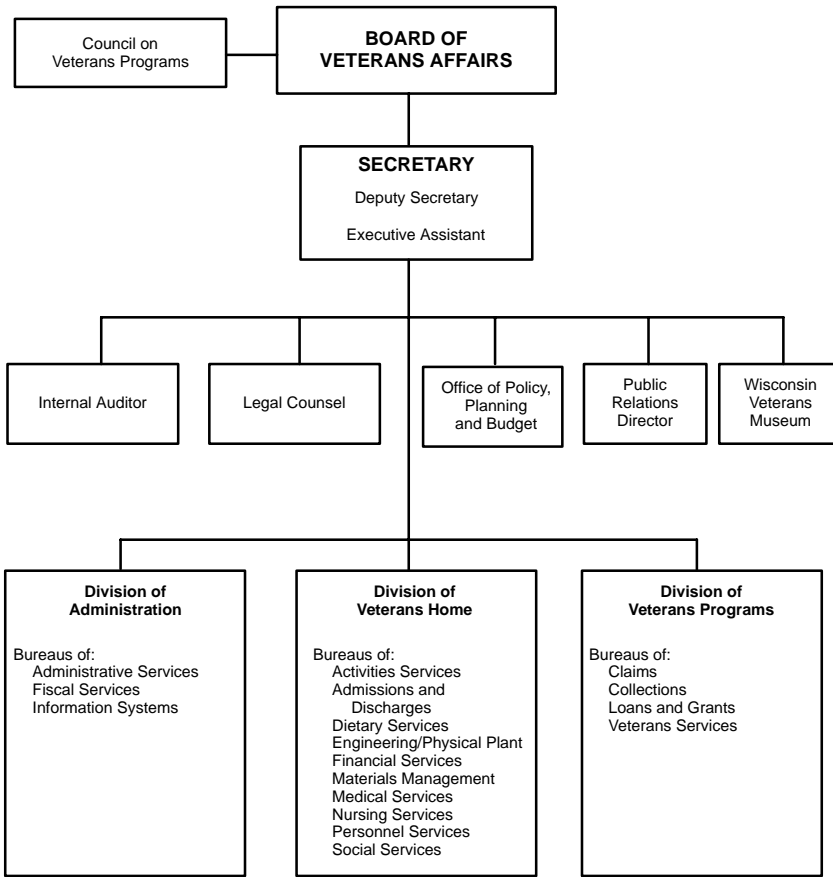
The department currently serves an estimated 502,500 veterans living in Wisconsin, including 33,800 Gulf War veterans, 151,900 Vietnam War veterans, 81,200 veterans of the Korean War, 133,500 World War II veterans and 200 veterans of World War I.

Organization: The department is headed by a board of 7 members who serve staggered 6-year terms. All board members must be veterans, as defined by statute, and the board must include at least 2 Vietnam War veterans. Administrative powers and duties are exercised by the department secretary, who is appointed by the board and serves at its pleasure.

Unit Functions: The *Division of Administration* provides data processing and fiscal management services, performs systems analysis and is responsible for personnel policies and employe benefits. In addition, the division directs training and staff development.

The *Division of Veterans Home* administers the Wisconsin Veterans Home at King. The Home has approximately 740 members. Facilities include 5 licensed skilled nursing care buildings, cottages for married couples able to care for themselves, chapels, a post office, a theater, bowling alleys, a museum and a library. The Home also operates the Wisconsin Veterans Memorial Cemetery. Services provided to residents include complete medical and nursing care, along with therapeutic treatments and social services.

DEPARTMENT OF VETERANS AFFAIRS



Membership at the Home is open to veterans who have served honorably during a wartime period specified in the Wisconsin Statutes. Veterans who are permanently incapacitated due to age or physical disability and those unable to find substantially gainful employment may be admitted if they meet service and residency criteria. Applicants must apply their income and resources to the cost of their care as required by Medicaid eligibility standards. The spouses of eligible veterans may also be admitted.

The *Division of Veterans Programs* administers the various loan and grant programs that the state offers Wisconsin veterans. It assists Wisconsin veterans who have claims against the federal government, and it operates the Southern Wisconsin Veterans Memorial Cemetery.

The home loan programs include primary mortgage and home improvement loans. The Primary Home Loan Program provides 30-year, first mortgage loans at a fixed rate of interest for the purchase or construction of private housing by qualified Wisconsin veterans. It is financed principally through self-amortizing, general obligation state bonds. The Home Improvement Loan Program is financed by recycled proceeds from the Primary Home Loan Program that are not dedicated to debt service. Improvement loans may cover repairs, alterations and renovations of a veteran's principal residence.



The state also funds economic assistance loans for veterans and supports education and subsistence grant programs. The Economic Assistance Loan Program permits eligible veterans to borrow for education, business purposes, home repairs or additions, farm improvement or other agricultural needs, and for other qualifying purposes. These loans are designed for veterans with low or moderate incomes who demonstrate a need for assistance.

The division is also responsible for collection of delinquent loan accounts, which may involve acquisition, management or sale of real and personal property. It may sell or lease such property to organizations that would use it primarily for homeless veterans and their families. Other division responsibilities include inspecting and appraising real estate that is the subject of loan applications and servicing the Veterans Trust Fund portfolio.

Part-time study grants are available to all eligible Wisconsin veterans or eligible persons who were dependents of deceased veterans. The grants provide full or partial reimbursement of tuition, fees and textbook costs upon satisfactory completion of part-time study or correspondence courses from approved public and private schools in Wisconsin and in other states. For veterans recently discharged from active duty, the Tuition and Fees Reimbursement Grant provides up to 50% reimbursement for courses successfully completed in undergraduate status at schools in the University of Wisconsin System or the Wisconsin Technical College System.

The Retraining Grant Program provides up to \$3,000 to recently unemployed veterans who demonstrate financial need while being enrolled in an academic, vocational or other job training program that is expected to lead to employment.



Its rotors folded back, a UH-60 Blackhawk helicopter of the 1st Battalion, 147th Aviation, Wisconsin Army National Guard, waits to be loaded aboard a C-5 Galaxy aircraft for airlift to Fort Bliss, Texas, to participate in a two-week joint exercise called "Roving Sands". (National Guard)



Grants are also available to provide temporary, emergency financial aid to veterans or their dependents. This subsistence aid may be provided only when there is illness or disability that causes loss of income, and the grant must be used for essential budgetary requirements. In the case of veterans receiving assistance for Post-Traumatic Stress Disorder (PTSD), loss of income is not a determining factor for eligibility.

The Veterans Assistance Program (VAP) operates veterans assistance centers in Milwaukee, Fort McCoy and the Veterans Home at King. Through the centers, homeless veterans and veterans at risk of becoming homeless receive education, job training and rehabilitative services to enable them to obtain steady employment and affordable housing. The program is a joint effort of the Wisconsin Department of Veterans Affairs, the U.S. Department of Veterans Affairs and community-based agencies.

Within the Division of Veterans Programs, the Bureau of Claims, which is located at the U.S. Department of Veterans Affairs regional office in Milwaukee, assists Wisconsin veterans with claims for compensation, pension, education, back pay or any other problems arising from military service.

The Wisconsin Veterans Museum in Madison is dedicated to Wisconsin veterans of all wars. It houses and exhibits artifacts related to Wisconsin's participation in U.S. military actions from the Civil War to the present and presents programs to the public on the history of Wisconsin's war efforts.

History: Legislation to benefit Wisconsin veterans dates back to the post-Civil War era. Most of the enactments between the Civil War and World War I were concerned with providing relief for destitute veterans and their families. In 1887, the Grand Army of the Republic (GAR), the prominent Civil War veterans' organization, founded the Grand Army Home at King, supported by private donations and federal and state subsidies. Now called the Wisconsin Veterans Home, the institution was first operated by the GAR and later by a state board and the adjutant general's office. Further recognition of Civil War veterans came in 1901, when the legislature established a Grand Army of the Republic headquarters and museum in the State Capitol. In 1989, funds were allotted to house the museum in a separate building on the Capitol Square. The Wisconsin Veterans Museum was opened in 1993.

After World War I, the 1919 Legislature granted a cash bonus, or alternatively an education bonus, to soldiers who fought in the war. It also created a fund for the relief of sick, wounded or disabled veterans, administered by the Service Recognition Board and later its successor, the Soldiers' Rehabilitation Board. Other legislation between World Wars I and II provided funds for hospitalization, memorials and free courses through the University of Wisconsin-Extension.

The creation of the Department of Veterans Affairs by Chapter 580, Laws of 1945, brought all veterans programs under a single agency. The department absorbed the Grand Army Home, the GAR Memorial Hall, the veterans claim services and the Soldiers' Rehabilitation Board. The department was assigned the economic aid, hospital care and education grants programs. It also took over 3 segregated veterans funds that were combined into the Veterans Trust Fund in 1961 to support the department's grants and loans programs, the claims service, and the museum.

Two major new programs relating to housing and education were implemented after World War II. Beginning with legislation in 1947, programs were established to help veterans finance home loans through a trust fund. The state supreme court declared earmarking liquor tax moneys for the fund unconstitutional under the internal improvements clause. A constitutional amendment approved by the voters in 1949 resolved the problem, and under Chapter 627, Laws of 1949, the department was authorized to make loans to qualified veterans for a portion of the value of their housing. The legislature converted this program to a second mortgage home loan program in 1973, when it established the Primary Home Loan Program that is financed with general obligation bonds. The state's use of general obligation bonding to offer home loans to veterans raised constitutional concerns. The legislature responded by proposing an amendment to the Wisconsin Constitution, which the voters ratified in April 1975.

Today's educational programs began with the same law that created the department in 1945. It provided for part-time study grants to veterans taking UW-Extension courses. Subsequent legislation has broadened participation to the other institutions and full-time study.



Statutory Council

Council on Veterans Programs: PHYLLIS PERK (United Women Veterans, Inc.), *chairperson*; WILLIAM HUSTAD (Wisconsin Vietnam Veterans, Inc.), *vice chairperson*; LEON URBAN (Catholic War Veterans of the U.S.A.), *secretary*; ITALO BENSONI (Veterans of Foreign Wars), PAUL A. BIALK (Marine Corps League), TED FETTING (Wisconsin Association of Concerned Veterans Organizations), PAUL FINE (Army and Navy Union of the United States of America), JOSEPH GUIDO (Disabled American Veterans), JOHN L. HAMMEL (Military Order of the Purple Heart), HENNING JESPERSON (Vietnam Veterans Against the War), JOHN MARGOWSKI (County Veterans Service Officers Association), JACK MOLNAR (AMVETS), PHILIP MUTH (American Ex-Prisoners of War), ROBERT PIARO (Vietnam Veterans of America), WILLIAM SIMS (National Association for Black Veterans, Inc.), WALTER STENAVICH (U.S. Submarine Veterans of World War II), STAN VALENTINE (Navy Club of the U.S.A.), ANTHONY J. VRANA (Polish Legion of American Veterans), PAUL WEPRINSKY (Jewish War Veterans of the U.S.A.), THOMAS H. WYNN (American Red Cross), vacancy (American Legion), vacancy (Federation of Culturally Diverse Veterans), vacancy (Veterans of World War I of the U.S.A., Inc.). (All are appointed by their respective organizations.)

The Council on Veterans Programs studies and presents policy alternatives and recommendations to the Board of Veterans Affairs. It is comprised of representatives appointed for one-year terms by organizations that have a direct interest in veterans' affairs. The council was created by Chapter 443, Laws of 1943, and its composition and duties are prescribed in Sections 15.497 and 45.35 (3d) of the statutes.

**Department of
WORKFORCE DEVELOPMENT**

Secretary of Workforce Development: LINDA STEWART, 266-7552.

Deputy Secretary: BRUCE HAGEN, 266-7552.

Executive Assistant: CONNIE HAGEN, 266-7552.

Affirmative Action, Office of: REGINA COWELL, *director*, 266-7327.

Legal Counsel: HOWARD I. BERNSTEIN, 266-9427.

Legislative Liaison: KATHERINE L. MNUK, 267-3200.

Public Communications Officer: DAVID BLASKA, 267-4400.

Mailing Address: P.O. Box 7946, Madison 53707-7946.

Location: 201 East Washington Avenue, Madison.

Telephone: (608) 266-7552.

Fax: (608) 266-1784.

Internet Address: <http://www.dwd.state.wi.us>

Publications: Contact individual divisions for publications.

Number of Employees: 2,515.74.

Total Budget 1995-96: \$299,172,700.

Total Budget 1996-97: \$899,050,600.

Statutory References: Sections 15.22, 15.223, 15.225 and 15.227; Chapters 49, 102-106, 108 and 109.

Note: Effective July 1, 1996, the Department of Industry, Labor and Human Relations was renamed the Department of Industry, Labor and Job Development, but the department was given the option of using the name Department of Workforce Development. It chose to exercise that option beginning July 1, 1996, and the legislature officially recognized the name choice in 1997 Wisconsin Act 3.

Address e-mail by combining the user ID and the state extender: userid@ mail.state.wi.us

Administrative Services Division: ORLANDO CANTO, *administrator*, cantoo@; ARTHUR ZOELLNER, *assistant to the administrator*, 266-7532, Fax: 267-3757, zoella@

Facilities Management, Bureau of: JEANNE FREY, *director*, 266-1777, freyj@

Finance, Bureau of: FREDERICK SIEGENTHALER, *director*, 266-7272, siegef@

Human Resource Services, Bureau of: P. STEPHEN CHRISTENSON, *director*, 266-3588, chrisp@

Information Technology Services, Bureau of: ROLLIN AGER, *director*, 267-9369, agerr@

Procurement, Bureau of: MAYTEE ASPURO, *director*, 266-3130, aspurma@

Strategic Planning and Budget, Bureau of: MICHAEL MAHONEY, *director*, 266-7895, mahonm@

Training, Communication and Education, Office of: JACQUIE PIRAINO, *director*, 266-3804, piraij@

Connecting Education and Work, Division of: VICKI J. POOLE, *administrator*, 266-0223, Fax: 261-6698, poolevi@

Career Centers: JOAN D. MCARTHUR, *coordinator*, 264-8744, mcartjo@

School-to-Work: MARY THOMPSON, *consultant*, 261-8508, thompma@

Youth Apprenticeship: JOYCE CHRISTEE, *coordinator*, 266-7210, chrisjo@

Economic Support, Division of: J. JEAN ROGERS, *administrator*, Room 358, Wilson Street State Office Building, 266-3035; JOHN E. BAUER, *deputy*, 266-2850.

Child Support, Bureau of: MARY SOUTHWICK, *director*, 267-0926.

Employment and Program Operations, Bureau of: JOSEPH STAFFORD, *director*, 267-0610.

Management and Operations, Bureau of: MARK HOOVER, *director*, 266-3782.

Welfare Initiatives, Bureau of: GARY KUHNEN, *director*, 267-9022.

Child Care, Office of: DAVID EDIE, *director*, 266-6946.

Quality Assurance, Office of: LINDA AUSSE, *director*, 261-6733.

Regional Offices:

Ashland: 220 Third Avenue West, P.O. Box 72, Ashland 54806-0072, (715) 682-7291.

Eau Claire: Suite 4, 312 South Barstow Street, Eau Claire 54701-3697, (715) 836-5414.

Green Bay: Suite 428, 200 North Jefferson Street, Green Bay 54303, (414) 448-5319.

Madison: 3601 Memorial Drive, Madison 53704-1104, (608) 243-2404.

Milwaukee: 6th Floor, 819 North 6th Street, Milwaukee 53203-1606, (414) 227-4245.

Rhineland: P.O. Box 697, Rhineland 54501-0697, (715) 365-2566.

Waukesha: 141 NW Barstow Street, Waukesha 53187, (414) 521-5114.

Equal Rights Division: J. SHEEHAN DONOGHUE, *administrator*, 266-0946, donogs@; LINDA HOELZEL, *assistant to the administrator*, 267-9012, hoelzi@; Fax: 267-4592, TTY: 264-8752.

Civil Rights, Bureau of: LEANNA WARE, *director*, 266-1997.

Labor Standards, Bureau of: JAMES L. STELSEL, *director*, 266-0026.

Unemployment Insurance, Division of: MAUREEN HLAVACHEK, *administrator*, 266-7074; ERIC BAKER, *deputy administrator*, 266-2284.

Benefit Fraud Operations, Bureau of: PHILIP J. KLUN, *acting director*, 266-3261.

Benefit Operations, Bureau of: ALBERT J. JALOVJAR, *director*, 266-8211.

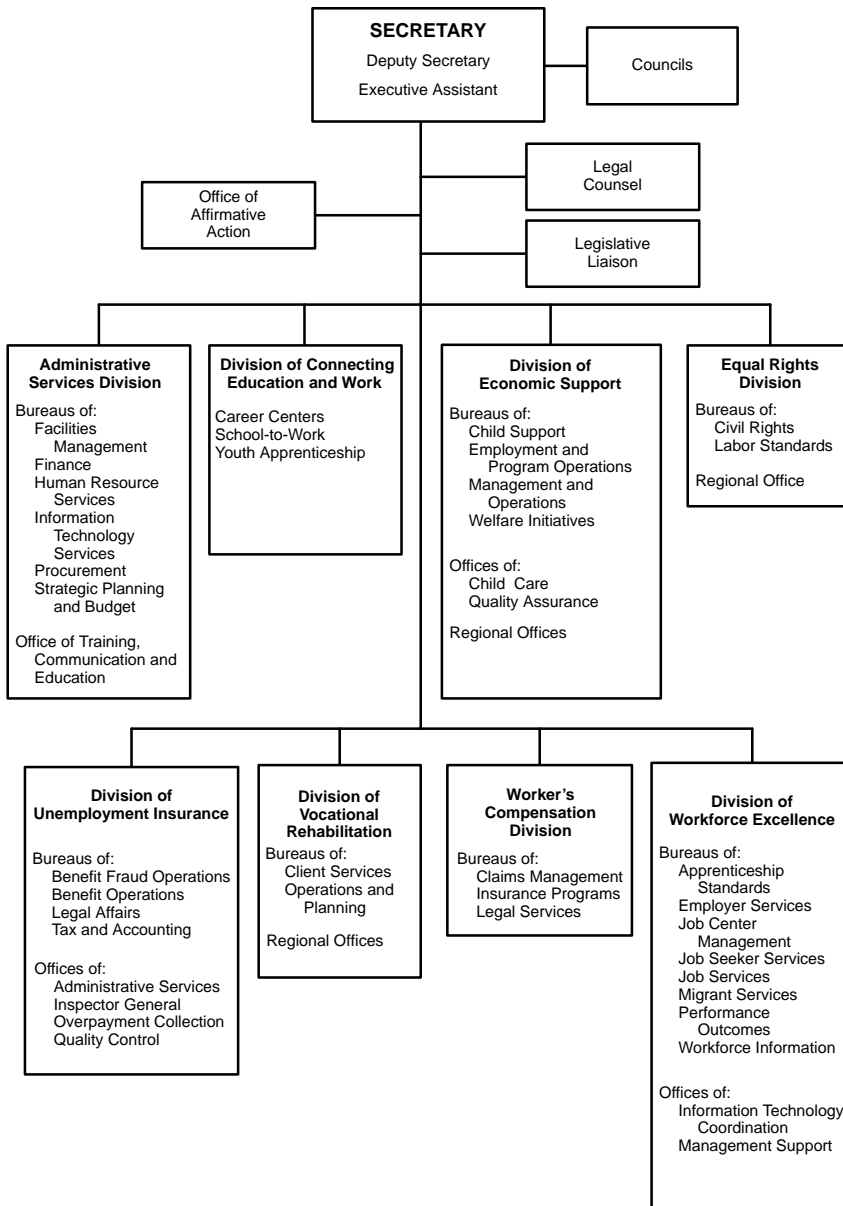
Benefit Centers:

Madison: Initial claims filing, (608) 232-0678; Employee inquiries, (608) 232-0824; Employer inquiries, (608) 232-0633.

Milwaukee: Initial claims filing, (414) 438-5395; Employee inquiries, (414) 438-7713; Employer inquiries, (414) 438-7705.

Statewide toll free: Initial claims filing, (800) 822-5246; Employee inquiries, (800) 494-4944; Employer inquiries, (800) 247-1744.

DEPARTMENT OF WORKFORCE DEVELOPMENT



Units attached for administrative purposes under Sec. 15.03: Labor and Industry Review Commission
Wisconsin Conservation Corps Board



Legal Affairs, Bureau of: GREGORY A. FRIGO, *director*, 267-1406.

Tax and Accounting, Bureau of: MARY ANDERSON, *director*, 266-3177.

Administrative Services, Office of: CAROL LAUDENBACH, *director*, 267-7743.

Inspector General, Office of: ERROL A. WELCH, *supervisor*, 266-6845.

Overpayment Collection, Office of: NADINE KONRATH, *administrative assistant*, 267-2187.

Quality Control, Office of: CHESTER FREDERICK, JR., *director*, 266-8260.

Vocational Rehabilitation, Division of: JUDY NORMAN-NUNNERY, *administrator*, 2917 International Lane, Suite 300, Madison 53707-7852, (608) 243-5603; TERRY SCHNAPP, *deputy administrator*, (608) 243-5605; Fax: (608) 243-5680 or (608) 243-5681, TTY: (608) 243-5601.

Client Services, Bureau of: RAYMOND F. TRUESDELL, *director*, (608) 243-5608.

Operations and Planning, Bureau of: vacancy, *director*.

Regional Offices:

Eau Claire: 517 East Clairemont Avenue, Eau Claire 54701-6479, (715) 836-4263.

Fond du Lac: 820 South Main Street, Fond du Lac 54935-5732, (414) 929-2924.

Green Bay: Suite 311, 200 North Jefferson Street, Green Bay 54301-5197, (414) 448-5281.

Janesville: 514 South Main Street, Janesville 53545-4800, (608) 758-6200.

Kenosha: 712-55th Street, Kenosha 53140-3690, (414) 653-6453.

La Crosse: Wing B, 333 Buchner Place, La Crosse 54603-3122, (608) 785-9500.

Madison East: Suite F, 600 Williamson Street, Madison 53703-4500, (608) 266-3655.

Madison West: Suite 2, 5005 University Avenue, Madison 53705-5415, (608) 266-4541.

Milwaukee Northeast: Suite 300, 1200 East Capitol Drive, Milwaukee 53211-1867, (414) 229-0300.

Milwaukee Northwest: 6830 West Villard Avenue, Milwaukee 53218-3936, (414) 438-4860.

Milwaukee Southeast: Suite 430, 555 West Layton Avenue, Milwaukee 53207-5931, (414) 769-5700.

Milwaukee Southwest: Room 408, 9401 West Beloit Road, Milwaukee 53227-4380, (414) 546-8340.

Worker's Compensation Division: GREGORY KROHM, *administrator*, 266-6841, krohmgr@; STAN VINGE, *deputy administrator*, 266-0337, vinges@

Claims Management, Bureau of: LEE SHOREY, *director*, 267-9407, shorel@

Insurance Programs, Bureau of: JACK MARTZ, *director*, 266-3149, martzja@

Legal Services, Bureau of: RICHARD SMITH, *director*, 267-6704, smithri@

Workforce Excellence, Division of: JUNE SUHLING, *administrator*, 266-2439, suhliju@; GERT PEERENBOOM, *deputy administrator*, 266-1021, Fax: 267-2392, peerege@

Apprenticeship Standards, Bureau of: KAREN MORGAN, *director*, 266-3133, Fax: 267-0766.

Employer Services, Bureau of: SHARON DAHLHAUSER, Fax: 267-2392.

Job Center Management, Bureau of: JOHN TUOHY, *director*, 267-4553, Fax: 267-2392, tuohyjo@

Job Seeker Services, Bureau of: PAT MOMMAERTS, *director*, 266-8212, Fax: 267-2392.

Job Services, Bureau of: JACK WICHITA, *director*, 267-9048, Fax: 267-2392, wichija@

Call toll-free (888) 258-9966 for telephone number and address of nearest job center.

Migrant Services, Bureau of: MATEO CADENA, *director*, 266-0002, Fax: 261-8506.

Performance Outcomes, Bureau of: RON HUNT, *director*, 266-2687, Fax: 267-0330, huntro@

Workforce Information, Bureau of: ELLEN HANSEN, *director*, 266-5843, Fax: 266-5887, hanseel@

Information Technology Coordination, Office of: NANCY BUCKWALTER, *director*, 266-7160, Fax: 267-2392.

Management Support, Office of: vacancy, *director*, Fax: 267-2392.



Agency Responsibility: The Department of Workforce Development conducts a variety of work-related programs designed to connect people with employment opportunities in Wisconsin. Its major responsibility is the Partnership for Full Employment, a comprehensive delivery system for employment and training services, including Wisconsin Works (W-2), the welfare alternative designed to move welfare recipients into the labor force. Other Partnership programs include job centers; job training and placement services provided in cooperation with private sector employers; apprenticeship programs; welfare reform programs, such as Learnfare; and assisting people with disabilities in securing employment. In conjunction with other agencies, the department administers the School-to-Work Program. It oversees the unemployment insurance and worker's compensation programs and is also responsible for adjudicating cases involving employment and housing discrimination and labor law.

Organization: The department is administered by a secretary who is appointed by the governor with the advice and consent of the senate. The secretary appoints the division administrators from outside the classified service.

Unit Functions: The *Administrative Services Division* provides management and program support to the other divisions, including budget, facilities, finance, human resources, information technology, procurement, strategic planning, training, communications and customer education.

The *Division of Connecting Education and Work* administers the state's School-to-Work initiative that prepares young people with skills for the future by coordinating school-based education with work-based learning opportunities. The program includes career centers that serve middle and high school youth and youth apprenticeship programs for high school juniors and seniors, based on skill standards developed in partnership with business, industry and labor. The division cooperates with the Department of Public Instruction, the Wisconsin Technical College System and the UW System to assure access to school-to-work programs for all young people.

The *Division of Economic Support* oversees Wisconsin's work-focused, welfare replacement programs that promote economic self-sufficiency for individuals and families. These programs include Wisconsin Works (W-2), the state's work-based alternative to Aid to Families with Dependent Children (AFDC); Pay for Performance; Learnfare; Work Not Welfare; and child support enforcement.

The division supervises local administration of other federal and state public assistance programs, including the Temporary Assistance to Needy Families (TANF) federal block grant that replaces AFDC, child care, Job Opportunities and Basic Skills (JOBS), food stamps and refugee services. It also determines eligibility for Medical Assistance (MA).

The *Equal Rights Division* was created in Section 15.223 (1), Wisconsin Statutes, by Chapter 327, Laws of 1967. It enforces state laws that protect citizens from discrimination in employment, housing, public accommodations, family and medical leave, and the labor laws relating to hours and conditions of work. It also enforces child labor laws and plant closing laws and assures that wages meet minimum wage standards and are paid on time. It determines prevailing wage rates and enforces them for state and municipal public works projects.

The *Division of Unemployment Insurance* administers programs to collect employer taxes, pay benefits to unemployed workers, resolve contested benefit claims and employer tax issues, detect welfare and unemployment insurance fraud, and collect unemployment insurance and welfare overpayments.

The *Division of Vocational Rehabilitation* provides employment-related services to individuals who have physical and mental disabilities that handicap them in securing employment. Each person is counseled and may receive medical, psychological, and vocational evaluation and training services. Employment programs, which are supported through state and federal funding, include: vocational rehabilitation for eligible persons with disabilities; supported employment, including job coaching for individuals with severe disabilities; home-based enterprise that allows eligible persons to produce marketable products or services; and the Business Enterprise Program that establishes business or vending stand locations for individuals who are legally blind.



The *Worker's Compensation Division* administers programs designed to ensure that injured workers receive required benefits from insurers and self-insured employers; encourage rehabilitation and reemployment for injured workers; and promote the reduction of work-related injuries, illnesses and deaths.

The *Division of Workforce Excellence*, created in Section 15.223 (2), Wisconsin Statutes, by 1995 Wisconsin Act 27, develops and administers the single comprehensive employment and training system known as the Partnership for Full Employment (PFE). This system combines all the state's workforce development resources – job training, welfare, vocational rehabilitation and school-to-work programs. Direct services are provided through a statewide network of job centers. The division analyzes and distributes labor market information, monitors migrant services and operates the state apprenticeship program.

History: Wisconsin labor law developed in response to the state's industrialization, which began in the 1880s. Wisconsin took the lead nationally in adjusting labor laws to modern industrial conditions. Based on European models, the legislature adopted social insurance, whereby the costs of correcting labor problems, such as worker injuries and unemployment, were imposed on employers as an inducement to prevent the problems.

Wisconsin's laws, enacted during the early part of the 20th century, dealt with minimum wage, conditions of employment for women and children, worker's compensation, free public employment offices, apprenticeship standards, and job safety regulations. Many of these programs served as models for legislation in other states. Wisconsin's original worker's compensation act (Chapter 50, Laws of 1911) was the first state law of its kind in the nation. In the 1930s, Wisconsin led in developing the unemployment compensation system (Chapter 20, Laws of Special Session 1931) and issued the first benefit check in the nation in 1936.

Since World War II, Wisconsin has enacted legislation prohibiting discrimination in employment on the basis of race, sex, creed, national origin, marital status, ancestry, arrest or conviction record, use of lawful products, membership in military reserve, sexual orientation, age, and handicapping condition. Similar laws now protect access to housing and public accommodations.

Early in the 20th century, the state delegated labor law administration to a politically independent body of experts, the State Industrial Commission, and its advisory committees. The Industrial Commission was encouraged to solve problems through administrative decisionmaking and the development of administrative rules to supplement the laws. A close tie between state government and the University of Wisconsin enabled the governor and legislature to translate reforms conceived in the academic arena into law.

The Department of Workforce Development evolved from the Wisconsin Bureau of Labor Statistics, created in 1883, which was succeeded by the State Industrial Commission in 1911. Following the 1967 executive branch reorganization, the Industrial Commission directed the new Department of Industry, Labor and Human Relations (DILHR). The commission was renamed the Industry, Labor and Human Relations Commission by Chapter 276, Laws of 1969, and it was replaced by a secretary in Chapter 29, Laws of 1977.

Effective July 1, 1996, the Department of Industry, Labor and Human Relations was renamed the Department of Industry, Labor and Job Development by 1995 Act 29, but the department was given the option of using the name Department of Workforce Development. It chose to exercise that option beginning July 1, 1996, and the legislature officially recognized the name choice in 1997 Wisconsin Act 3.

The department was significantly altered by 1995 Wisconsin Act 27. It assumed many duties formerly performed by other agencies, in particular supervision of welfare and income maintenance programs and vocational rehabilitation services, which were transferred from the former Department of Health and Social Services. At the same time, the Division of Safety and Buildings was transferred from the department to the new Department of Commerce.



Statutory Councils

Wisconsin Apprenticeship Council: BRYAN ALBRECHT, WAYNE BELANGER, TERRENCE BENEWICH, PAUL BLASHKA, JOAN BRAUN, EDWARD CHIN, GARY HAMILTON, JAMES HODGES, BERNARD KURZAWA, SCOTT LANGELIN, RICHARD LYNES, RONALD STEINER, JUNE SUHLING, MARY WATRUD, RONALD WEINER, RUSS WITTKOP, ROBERT WOLFGRAF, MARJORIE WOOD. (All are appointed by the Labor and Industry Review Commission.)

Mailing Address: P.O. Box 7972, Madison 53707-7972.

Telephone: (608) 266-3133.

The Wisconsin Apprenticeship Council advises the department on matters pertaining to Wisconsin's apprenticeship system. The council was created by Chapter 29, Laws of 1977, and its duties and composition are prescribed in Sections 15.09 (5) and 15.227 (13) of the statutes.

Child Labor, Council on: Inactive.

The Council on Child Labor conducts a biennial review of the state's child labor laws and recommends modifications when needed. The Labor and Industry Review Commission designates one of its members to serve on the council and act as chairperson. The council may select as many public members as it wishes, but they must be knowledgeable in the field of child labor and problems related to the employment of minors. The council was created by Chapter 271, Laws of 1971, and its composition and duties are prescribed in Sections 15.227 (5) and 103.69 of the statutes.

Construction Wage Rate Council: Inactive.

The Construction Wage Rate Council advises the department on the prevailing wage rates for state and municipal public works projects. The council is appointed by the Labor and Industry Review Commission, which may determine the number of members. The council was created by Chapter 29, Laws of 1977, and its duties and composition are prescribed in Sections 15.09 (5) and 15.227 (9) of the statutes.

Equal Rights Council: Inactive.

Mailing Address: P.O. Box 8928, Madison 53708-8928.

Telephone: (608) 266-1617.

The Equal Rights Council advises the legislature, the secretary, and the Division of Equal Rights and educates the public about promoting human rights and reducing discrimination in housing and employment. The council may include up to 35 members appointed from the entire state for staggered 3-year terms. Members must "be representative of all races, creeds, groups, organizations and fields of endeavor." The council was created by Chapter 327, Laws of 1967, and its composition and duties are prescribed in Sections 15.227 (1) and 106.05 of the statutes.

Labor and Management Council: DAVID NEWBY (labor community representative), LINDA STEWART (nonvoting public official), *cochairpersons*; LYLE BALISTRERI, MARTIN BEIL, ROBERT GLASER, JAMES NEWELL, CANDICE OWLEY, GENE SYLVESTER (labor community representatives); JOHN F. BARRETT, JAMES HANEY, THOMAS JACOB LEINENKUGEL, JON E. LITSCHER, JONATHAN SWAIN, 2 vacancies (management representatives); TERRY GROSENHEIDER, A. HENRY HEMPE, RON SWEET, vacancy (nonvoting public employees or officials). (All are appointed by governor.)

Mailing Address: P.O. Box 7972, Madison 53707-7972.

Telephone: (608) 266-9615.

Fax: (608) 267-0330.

The Labor and Management Council provides a forum for labor, management and public sector representatives to discuss issues that affect the state's economy and to foster positive labor-management relations in the workplace. The 19 council members serve 5-year terms. The council was created by 1987 Wisconsin Act 27, and its composition and duties are prescribed in Section 15.227 (17) of the statutes.





High school students learn graphic arts skills at a printing company through participation in a youth apprenticeship program managed by the Division of Connecting Education and Work in the Department of Workforce Development. (Department of Workforce Development)

Labor Standards Council: Inactive.

The Labor Standards Council advises the department about laws and regulations related to administration of minimum wage, overtime and other labor standards issues. The council is appointed by the Labor and Industry Review Commission, which may determine the number of members. The council was created by Chapter 29, Laws of 1977, and its duties and composition are prescribed in Sections 15.09 (5) and 15.227 (14) of the statutes.

Migrant Labor; Council on: REPRESENTATIVE BOCK, *chairperson*; LYLE K. MATHWICH (employer of migrant workers), *vice chairperson*; JOHN F. EBBOTT (migrant worker's representative), *secretary*; SENATOR BURKE, *vacancy*; REPRESENTATIVE OLSEN; PAUL HEDRICK, JR., JOHN KNOCH, BRAD KOLPIN, RICHARD J. LENTZ, DEAN A. ZULEGER (employers of migrant workers); CECELIA A. BERTH, MARK GROSS, ROSA I. GUERRERO, LUPE MARTINEZ, MARITZA MORALES VERSTEGEN (migrant workers' representatives). (All except legislative members are appointed by governor.)

Mailing Address: P.O. Box 7903, Madison 53707-7903.

Telephone: (608) 266-0002.

The Council on Migrant Labor advises the department and other state officials about matters affecting migrant workers. The 16-member council includes 12 nonlegislative members who serve 3-year terms. The 2 senators and 2 assembly members are appointed as "representatives of the public" and the delegation from each house must include representatives from both major political parties. The council was created by Chapter 17, Laws of 1977, and its composition and duties are prescribed in Sections 15.227 (8), 103.967 and 103.968 of the statutes.

Self-Insurers Council: GERALD E. ZITZER, *chairperson*; JILL E. JOSWIAK, RICHARD J. KENNEY, HERB PIRKEY, JOHN WITTRY (appointed by Labor and Industry Review Commission).

Mailing Address: P.O. Box 7901, Madison 53707-7901.

Telephone: (608) 266-3149.



The Self-Insurers Council advises and makes recommendations to the department about matters related to companies that cover their own worker's compensation losses rather than insuring them with an insurance carrier. The 5 council members are appointed for 3-year terms. The council was created by Chapter 29, Laws of 1977, and its duties and composition are prescribed in Sections 15.09 (5) and 15.227 (11) of the statutes.

Unemployment Compensation, Council on: GREGORY A. FRIGO (permanent classified employe of department) (nonvoting member), *chairperson*; MICHAEL BOLTON, JOSEPH A. KIRIAKI, ROBERT W. LYONS, PHIL NEUENFELDT, DENNIS PENKALSKI (employe representatives); JAMES BUCHEN, EARL GUSTAFSON, MICHAEL A. JUNEAU, KENNETH KRUSKA (employer representatives); ALFRED T. PECK, JR. (small business employer representative). (All appointed by secretary of workforce development.)

Mailing Address: P.O. Box 8942, Madison 53708-8942.

Telephone: (608) 266-3189.

The Council on Unemployment Compensation advises the legislature and the department about unemployment compensation matters. The 11-member council includes 5 employers and 5 employes who are appointed for 6-year terms, plus a department employe who acts as the council's nonvoting chairperson. In making council appointments, the secretary must consider "balanced representation of the industrial, commercial, construction, nonprofit and public sectors of the state's economy." One employer representative must be a small business owner or represent a small business association. The council was created by Chapter 327, Laws of 1967. Its composition and duties are prescribed in Sections 15.227 (3) and 108.14 (5) of the statutes.

Worker's Compensation, Council on: GREGORY KROHM (department or commission employe), *chairperson*; RICHARD J. BAGIN, JEFFREY J. BEIRIGER, JAMES A. BUCHEN, KATHLEEN COAKLEY, GREG GLEICHERT (employer representatives); ROBERT GLASER, EMIL R. MUELVER, NETTIE L. SIMS, 2 vacancies (employe representatives); ROB FRONK, DON GRASSL, BRUCE OLSON (nonvoting insurance company representatives). (All are appointed by Labor and Industry Review Commission.)

Mailing Address: P.O. Box 7901, Madison 53707-7901.

Telephone: (608) 266-6841.

The Council on Worker's Compensation advises the legislature and the department about worker's compensation and related matters. The council was created by Chapter 281, Laws of 1963, as the Advisory Committee on Workmen's Compensation, appointed by the Industrial Commission. It was given its current name and located in the Department of Industry, Labor and Human Relations by Chapter 327, Laws of 1967. The 14-member council includes 3 nonvoting representatives of insurers authorized to do worker's compensation insurance business in Wisconsin and a department or commission employe acting as chairperson. The council's composition and duties are prescribed in Sections 15.227 (4) and 102.14 (2) of the statutes.

Workforce Excellence, Governor's Council on: vacancy (senator); vacancy (representative to assembly); JOHN BENSON (superintendent of public instruction); MARK BUGHER (secretary of administration); WILLIAM MCCOSHEN (secretary of commerce); LINDA STEWART (secretary of workforce development); ED CHIN (executive director, Wisconsin Technical College System); HERBERT J. GROVER (4-year postsecondary institution representative); SHIRLEY PREUSS (technical college district representative); DANIEL A. NERAD (public school system representative); JULIA TAYLOR (community-based organization representative); J. MICHAEL BORDEN, JAMES HANEY, GERALD A. TALEN (business and industry representatives); FRED J. GEGARE, PHIL NEUENFELDT, MARK REIHL (labor representatives). (All except legislators and *ex officio* members or their designees are appointed by governor with senate consent.)

Contact person: JUNE SUHLING.

Mailing Address: Department of Workforce Development, Division of Workforce Excellence, Room 201X, 201 East Washington Avenue, Madison 53702.

Telephone: (608) 266-2439; Fax: (608) 267-2392.

The Governor's Council on Workforce Excellence oversees the planning, coordination, administration and implementation of various employment and education programs, including provisions of the federal Job Training Partnership Act (JTPA). It also identifies the workforce devel-

opment needs of the state and makes recommendations to the governor regarding goals to meet those needs. The chairperson of the 16-member council is appointed by the governor. One of the members appointed to represent business and industry must be a member of a private industry council. The council was created by 1995 Wisconsin Act 27 to replace the State Human Resource Investment Council, which had been created by Governor Tommy Thompson in Executive order 234, September 9, 1994. Its composition and duties are prescribed in Sections 15.227 (24) and 106.115 (1) and (2) of the statutes.

INDEPENDENT UNITS ATTACHED FOR PROGRAM COORDINATION AND RELATED
MANAGEMENT FUNCTIONS BY SECTION 15.03 OF THE STATUTES

LABOR AND INDUSTRY REVIEW COMMISSION

Labor and Industry Review Commission: PAMELA I. ANDERSON, *chairperson*; DAVID B. FALSTAD, vacancy (appointed by the governor with senate consent).

General Counsel: JAMES L. PFLASTERER.

Mailing Address: P.O. Box 8126, Madison 53708-8126.

Location: Public Broadcasting Building, 3319 West Beltline Highway, Madison.

Telephone: (608) 266-9850.

Fax: (608) 267-4409.

Publications: Informational brochures.

Number of Employees: 30.00.

Total Budget 1995-96: \$2,339,400.

Total Budget 1996-97: \$2,347,100.

Statutory References: Sections 15.225, 15.227 and 103.04.

Agency Responsibility: The Labor and Industry Review Commission is a quasi-judicial body, created by Chapter 29, Laws of 1977, which handles petitions seeking review of the decisions of the Department of Workforce Development related to unemployment insurance, worker's compensation, equal housing, fair employment and public accommodations. It also hears appeals about discrimination in postsecondary education based on a person's physical condition or developmental disability. Commission decisions may be appealed to the circuit court. Commission decisions are enforced by the Department of Justice or the commission's legal staff. The 3 commission members serve full-time for staggered 6-year terms, and they select a chairperson from their membership to serve for a 2-year period. By law, the commission's budget must be transmitted to the governor by the department without modification, unless the commission agrees to the change.

WISCONSIN CONSERVATION CORPS BOARD

Wisconsin Conservation Corps Board: LAURA DEGOLIER, MARIE J. FINDLAY, WILLIAM MARTIN, CLARENCE NATZKE, vacancy (representing area private industry council), ROGER SABOTA, GORDON SILL (appointed by governor with senate consent).

Executive Secretary: BRIAN SCHIMMING (appointed by governor with senate consent).

Mailing Address: Room 406, 30 West Mifflin Street, Madison 53703-2558.

Telephone: (608) 266-7730.

Fax: (608) 267-2733.

Publications: Biennial Report; *On Corps!* (monthly newsletter).

Total Budget 1995-96: \$4,108,300.

Statutory References: Sections 15.225 (2) and 106.215.

Agency Responsibility: The Wisconsin Conservation Corps Board is the policymaking board for the Wisconsin Conservation Corps (WCC). The WCC provides work experience and personal development opportunities for underemployed and unemployed men and women ages 18-25 by implementing conservation and human services projects for federal and state agencies, local units of government, and nonprofit organizations. The board establishes guidelines for the proj-



ects and sets standards and procedures for the selection, hiring and training of corps members. The board's staff supervises the projects and handles the recruitment and training of the crew leaders and the corps members, who are chosen to work for one-year terms at different project sites throughout the state. Upon completion of their year of service, corps members are eligible for a cash bonus or a tuition voucher. There are approximately 300 slots for corps enrollees each year.

The 7 board members serve staggered 6-year terms and represent regional, environmental and agricultural interests. Representatives from several state agencies act as liaison representatives to the board.

The board was created by 1983 Wisconsin Act 27 and attached to the Department of Natural Resources. 1985 Wisconsin Act 29 attached it to the Department of Administration. It was attached to the Department of Workforce Development by 1995 Wisconsin Act 27.

STATE AUTHORITIES

Authorities are public, corporate bodies created for specific purposes.

UNIVERSITY OF WISCONSIN HOSPITAL AND CLINICS AUTHORITY

Board of Directors: FRANK J. PELISEK (appointed by governor with senate consent), *chairperson*; SENATOR BURKE (cochairperson, Joint Committee on Finance), REPRESENTATIVE OURADA (designated by cochairperson, Joint Committee on Finance); RUTH MARCENE JAMES, SAN W. ORR, JR., GEORGE K. STEIL, SR. (UW Board of Regents members appointed by board president); DAVID WARD (chancellor, UW-Madison); PHILIP M. FARRELL (dean, UW-Madison Medical School); LAYTON G. RIKKERS (chairperson, surgery department, UW-Madison Medical School), THELMA WELLS (faculty member, nursing school, UW-Madison) (appointed by chancellor, UW-Madison); GEORGE LIGHTBOURN (designated by secretary of administration); PATRICK G. BOYLE, JEROME H. GUNDERSEN (appointed by governor with senate consent). Nonvoting members: CAROL L. BOOTH-PARKS, vacancy (labor representatives appointed by governor).

Chief Executive Officer: GORDON M. DERZON.

Mailing Address: Room H4/824, 600 Highland Avenue, Madison 53792-8360.

Location: 600 Highland Avenue, Madison.

Telephone: (608) 263-8025.

Fax: (608) 263-9830.

Publication: *Health Matters* (newsletter published 6 times annually for Dane County residents).

Number of Employees: 5,100.00 (not state funded).

Total Budget 1996-97: \$296,426,000 (not state funded).

Statutory References: Section 15.96; Chapter 233.

Agency Responsibility: The University of Wisconsin Hospital and Clinics Authority maintains the UW hospital and clinics and supervises the delivery of health care and treatment, including care for the indigent. It provides instruction for medical and other health professions students, sponsors and supports medical research, and assists health care programs and personnel throughout the state. It also operates a poison control center. Subject to approval by its board, the Authority may issue bonds to support its operations and may seek financing from the Wisconsin Health and Educational Facilities Authority.

Organization: The Authority is a public corporation. The 15-member board of directors includes 2 nonvoting members from the labor organizations that represent Authority employees. The governor's appointees serve 3-year terms. The board elects a chairperson annually and ap-