

**Department of  
HEALTH AND FAMILY SERVICES**

**Secretary of Health and Family Services:** JOSEPH LEEAN, 266-9622.

*Deputy Secretary:* RICHARD W. LORANG, 266-9622.

*Executive Assistant:* JOHN KIESOW, 266-9622.

*Affirmative Action and Civil Rights Compliance:* GLADYS BENAVIDES, 266-3465.

*Legal Counsel:* DANIEL STIER, 266-1404.

*Legislative Liaison:* LAURA LEITCH, 266-3262.

*Program Review and Audit, Office of:* PATRICK COOPER, *director*, 267-2846.

*Public Affairs:* JAMES MALONE, 266-1683.

*Strategic Finance, Office of:* CHARLES WILHELM, *director*, 266-8402.

*Area Administration:* DIANE WALLER, *director*, 267-8928.

*Congressional Liaison:* MARY KAY MANTHO, (202) 624-5870.

*Budget Section:* FREDI-ELLEN BOVE, *chief*, 266-2907.

*Delivery Systems Development, Center for:* TOM HAMILTON, *chief*, 266-9304.

*Strategic Planning and Evaluation Section:* ROBERT WAGNER, *chief*, 266-9296.

*Tribal Affairs:* NANCIE YOUNG, 266-5862.

*Department of Health and Family Services Regional Offices:*

*Northeastern:* 200 North Jefferson Street, Suite 411, Green Bay 54301, (414) 448-5312.

*Northern:* 1853A North Stevens Street, Rhinelander 54501, (715) 365-2500.

*Southeastern:* 141 NW Barstow Street, Waukesha 53188, (414) 521-5100.

*Southern:* 3601 Memorial Drive, Madison 53704, (608) 243-2400.

*Western:* 312 South Barstow Street, Eau Claire 54701-3696, (715) 836-2174.

**Mailing Address:** P.O. Box 7850, Madison 53707-7850.

**Location:** Wilson Street State Human Services Building, 1 West Wilson Street, Madison.

**Telephone:** (608) 266-9622.

**Publications:** Annual Fiscal Report; Biennial Report; reports and informational brochures (available through divisions).

**Number of Employees:** 6,264.54.

**Total Budget 1995-96:** \$4,561,271,200.

**Total Budget 1996-97:** \$3,708,043,500.

**Statutory References:** Section 15.19; Chapter 46.

*Care and Treatment Facilities, Division of:* THOMAS ALT, *administrator*, 266-8740; LAURA FLOOD, *deputy administrator*, 267-7921.

*Program Support:* DONALD PAHNKE, *director*, 267-2254.

*Mendota Mental Health Institute:* STEVEN WATTERS, *director*, 301 Troy Drive, Madison 53704-1599, (608) 243-2500.

*Winnebago Mental Health Institute:* JOANN O'CONNOR, *director*, P.O. Box 9, Winnebago 54985-0009, (414) 235-4910.

*Central Wisconsin Center for the Developmentally Disabled:* THEODORE BUNCK, *director*, 317 Knutson Drive, Madison 53704-1197, (608) 243-2211.

*Northern Wisconsin Center for the Developmentally Disabled:* BETTY BLESSINGER, *director*, P.O. Box 340, Chippewa Falls 54729-0340, (715) 723-5542.

*Southern Wisconsin Center for the Developmentally Disabled:* JAMES HUTCHISON, *director*, P.O. Box 100, Union Grove 53182-0100, (414) 878-2411.

*Wisconsin Resource Center:* PHILIP MACHT, *director*, P.O. Box 16, Winnebago 54985-0016, (414) 426-4310.



*Children and Family Services, Division of:* SUSAN DREYFUS, *administrator*, 267-3905; DENNIS KIRCHOFF, *deputy administrator*, 267-3687.

*Community and Family Development, Bureau of:* CLAUDE GILMORE, *director*, 266-9354.

*Management and Operations, Bureau of:* WILLIAM FISS, *director*, 266-3728.

*Milwaukee Child Welfare, Bureau of:* TERRY ROE LUND, *director*, 261-8869.

*Programs and Policies, Bureau of:* LINDA HISGEN, *director*, 266-6799.

*Regulation and Licensing, Bureau of:* PATTY HAMMES, *director*, 267-7933.

*Health, Division of:* vacancy, *administrator*, 266-1511; JOHN CHAPIN, *deputy administrator*, 266-9780.

*Disability Determination, Bureau of:* WILLIAM SHELTON, *director*, 266-1981.

*Health Care Financing, Bureau of:* PEGGY BARTELS, *director*, 266-2522.

*Health Management and Analysis, Bureau of:* JAMES VAVRA, *acting director*, 266-7384.

*Public Health, Bureau of:* KENNETH BALDWIN, *director*, 1400 East Washington Avenue, Madison, 266-1251.

*Center for Health Statistics:* JAMES VAVRA, *director*, 266-1334.

*Management and Technology, Division of:* MICHAEL HUGHES, *administrator*, 266-6954; SUSAN REINARDY, *assistant administrator*, 267-3544.

*Engineering, Bureau of:* ROBERT WENTZEL, *director*, 266-2901.

*Fiscal Services, Bureau of:* DONALD WARNKE, *director*, 266-5869.

*Information Systems, Bureau of:* FRED WAHLER, *director*, 266-0123.

*Personnel and Employment Relations, Bureau of:* KEN DEPREY, *director*, 266-9862.

*Supportive Living, Division of:* GERALD BORN, *administrator*, 266-2701; LARRY TANTER, *deputy administrator*, 267-9059.

*Aging and Long-Term Care Resources, Bureau on:* DONNA MCDOWELL, *director*, 266-2536.

*Community Mental Health, Bureau of:* SINIKKA MCCABE, *director*, 266-3249.

*Developmental Disabilities Services, Bureau of:* BEVERLY DOHERTY, *director*, 266-9329.

*Management and Budget, Bureau of:* GREG ROBBINS, *director*, 266-5275.

*Quality Assurance, Bureau of:* JUDY FRYBACK, *director*, 267-7185.

*Sensory Disabilities, Bureau of:* JOHN CONWAY, *director*, 243-5622.

*Substance Abuse Services, Bureau of:* PHILIP MCCULLOUGH, *director*, 266-3719.

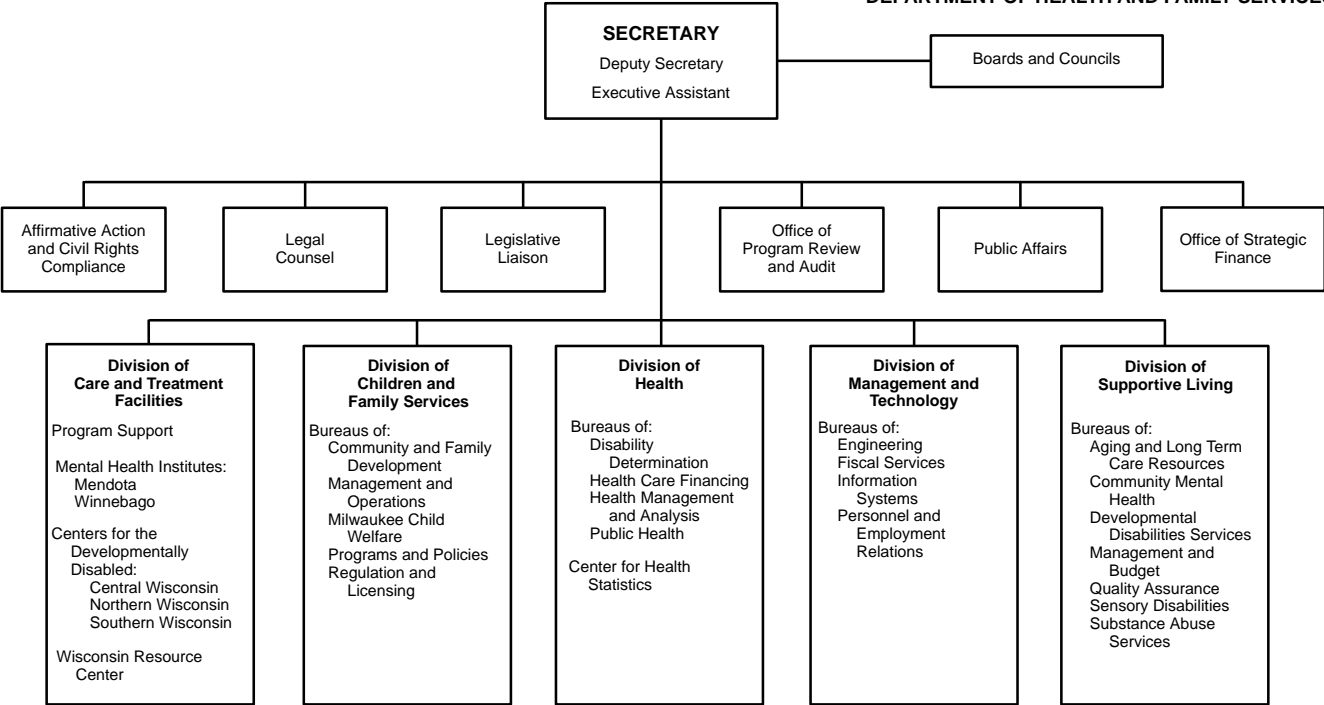
**Agency Responsibility:** The Department of Health and Family Services administers a wide range of services to clients in communities and institutions, regulates certain care providers, and supervises and consults with local public and voluntary agencies. Its responsibilities span public health, mental health, substance abuse, long-term care, services to the disabled, medical assistance and children's services.

**Organization:** The department is administered by a secretary who is appointed by the governor with the advice and consent of the senate. The secretary appoints the division administrators from outside the classified service and the director of policy and budget from the classified service.

**Unit Functions:** The *Office of the Secretary* is responsible for the overall administration of the department. Within the secretary's office the *Office of Strategic Finance* prepares and implements departmentwide planning, budgeting and evaluation systems. It reviews existing and proposed policies and administrative rules and develops legislative proposals. The office is also responsible for managed health care contracts, oversight of the department's regional offices and program coordination with Native American tribal units.

The *Division of Care and Treatment Facilities* administers the state's institutional programs for persons whose mental and physical needs cannot be met in a traditional community setting, including those who are developmentally disabled, mentally ill, or subject to alcohol or drug abuse. The institutions provide medical, psychological, social and rehabilitative services. The 3 centers for the developmentally disabled provide a full range of residential programs, as well

**DEPARTMENT OF HEALTH AND FAMILY SERVICES**



EXECUTIVE BRANCH

Units attached for administrative purposes under Sec. 15.03:  
 Adolescent Pregnancy Prevention and Pregnancy Services Board  
 Council on American Indian Health  
 Child Abuse and Neglect Prevention Board  
 Council on Developmental Disabilities  
 Emergency Medical Services Board  
 Milwaukee Child Welfare Partnership Council  
 Council on Physical Disabilities



as support for community alternatives to institutional placement. The 2 mental health institutes provide treatment for persons in need of hospitalization. They also offer support for community alternatives. The division operates the Wisconsin Resource Center for mentally ill prison inmates whose treatment needs cannot be met in the Department of Corrections. It also provides treatment to individuals under the sexually violent persons law.

The *Division of Children and Family Services* administers programs that affect children and families including those designed to prevent child abuse and neglect, domestic abuse, and alcohol and other drug abuse; to preserve and support families; and to prevent adolescent pregnancy. It regulates and licenses child welfare institutions, as well as individuals and organizations providing foster care and day care, and administers adoption programs. The division also administers programs for hunger prevention, migrant workers and their families, and teenage parents. It will assume responsibility for administering the Milwaukee County's child welfare system. no later than January 1, 1998.

The *Division of Health* is responsible for protecting and promoting public health in Wisconsin. Activities include enforcing state and federal health regulations; promoting preventive health care; allocating state long-term health care resources; licensing and inspection of hospitals, other medical service facilities, hotels and restaurants; and administering the Medical Assistance program. It also provides consultation and education on general and occupational health topics and disseminates vital and health statistics.

The *Division of Management and Technology* oversees financial management, information systems and technology, personnel and employment relations, purchasing, facilities management and other administrative services. It is responsible for the design of the electronic benefit transfer systems.

The *Division of Supportive Living* is responsible for a variety of services to the elderly and disabled. Its programs focus on alcohol and other drug abuse, developmental and physical disabilities, mental health, and long-term community-based care and support programs. Among the programs administered by the division are the state supplement to Supplemental Security Income (SSI), licensing and regulating of nursing homes and community-based residential facilities, and the long-term community options and community integration programs that provide noninstitutional options for the elderly and disabled.

**History:** The Department of Health and Family Services combines supervision of many state and local functions that had developed separately in the 1800s. For more than two decades after statehood, Wisconsin created separate governing boards and institutions for the care of prisoners; juveniles; and blind, deaf, and mentally ill persons. By 1871, there were 6 such institutions. The first attempt to develop overall supervision of these services came when the legislature passed Chapter 136, Laws of 1871, creating the State Board of Charities and Reform. Its duties included examination of the operations of their boards and institutions and investigation of practices in local asylums, jails, and schools for the blind and deaf.

In Chapter 298, Laws of 1881, the legislature abolished the separate institutional boards and combined their functions under the State Board of Supervision of Wisconsin Charitable, Reformatory and Penal Institutions. The State Board of Charities and Reform continued to operate until 1891, however. In that year, the legislature abolished the preceding boards and created the State Board of Control of the Wisconsin Reformatory, Charitable and Penal Institutions in Chapter 221, Laws of 1891, thus completing the consolidation of public welfare activities.

In the early days of statehood, public health was primarily a function of local governments. In Chapter 366, Laws of 1876, the legislature established the State Board of Health to "study the vital statistics of this state, and endeavor to make intelligent and profitable use of the collected records of death and sickness among the people." The board was directed to "make sanitary investigations and inquiries respecting the causes of disease, and especially of epidemics; the causes of mortality, and the effects of localities, employments, conditions, ingesta, habits and circumstances on the health of the people." This directive defines much of the work still done in public health. Later legislation required the board to take responsibility for tuberculosis care (1905), to direct its efforts toward preventing blindness in infants (1909), and to inspect water and sewerage systems to prevent typhoid and dysentery (1919). In addition, at various times, the board licensed restaurants, health facilities, barbers, embalmers and funeral directors.



By the time the federal government entered the field of public welfare during the Great Depression of the 1930s, Wisconsin had already pioneered a number of programs, including aid to children and pensions for the elderly (enacted in 1931). The Wisconsin Children's Code, enacted by Chapter 439, Laws of 1929, was one of the most comprehensive in the nation. The state's initial response to federal funding was to establish separate departments to administer social security funds and other public welfare programs. After several attempts at reorganization and a series of studies, the legislature established the State Department of Public Welfare in Chapter 435, Laws of 1939, to provide unified administration of all existing welfare functions. Public health and care for the aged were delegated to separate agencies.

The Department of Health and Social Services was the creation of the executive branch reorganization act of 1967. The new department was directed by the Board of Health and Social Services, which was appointed by the governor. The board appointed the departmental secretary to administer the agency. In addition to combining public welfare, public health, and care for the aged in the reorganization act, the 1967 Legislature added the Division of Vocational Rehabilitation in Chapter 43.

The decades of the 1960s and 1970s saw an expansion of public welfare and health services at both the federal and state levels. Especially notable were programs for medical care for the needy and aged (Medical Assistance and Medicare), drug treatment programs, food stamps, Aid to Families with Dependent Children Program (AFDC) and increased regulation of hospitals and nursing homes. The department also underwent a significant administrative change during this period. In Chapter 39, Laws of 1975, the legislature abolished the board and replaced it with a secretary appointed by the governor with the advice and consent of the senate. That same law called for a reorganization of the department, which was completed by July 1977.

While continuing to administer its established programs, the department was assigned additional duties during the 1980s in the areas of child support, child abuse and neglect, programs for the handicapped, and welfare reform. 1989 Wisconsin Acts 31 and 107 created a separate Department of Corrections to administer adult corrections institutions and programs. 1995 Wisconsin Act 27 transferred responsibility for juvenile offenders to the Department of Corrections.

In 1993 Wisconsin Act 99, the legislature made a commitment to end AFDC. 1995 Wisconsin Act 27 (the executive budget) revised AFDC and transferred it and other income support programs to the Department of Workforce Development. The Department of Health and Social Services was renamed the Department of Health and Family Services (DHFS), effective July 1, 1996. Existing welfare reform programs, including Job Opportunities and Basic Skills (JOBS), Learnfare, Parental Responsibility and Work-Not-Welfare, were also transferred to the Department of Workforce Development. Other duties transferred to that department by Act 27 included the Child and Spousal Support, the Children First Program, Older American Community Service Employment, refugee assistance programs and vocational rehabilitation functions. Act 27 also transferred laboratory certification to the Department of Agriculture, Trade and Consumer Protection and low-income energy assistance to the Department of Administration.

Health care facilities plan review was transferred from the Department of Industry, Labor and Human Relations to DHFS by 1995 Wisconsin Act 27. As a result of 1995 Wisconsin Act 303, the department will assume responsibility for Milwaukee County child welfare services no later than January 1, 1998.

#### **Statutory Boards and Councils**

*Blindness, Council on:* WILLIAM MEEKER, *chairperson*; PATRICIA BOERSCHINGER, *vice chairperson*; ALFRED BOECKELER, *secretary*; THERESA GILLILAND, GEORGE HILLIARD, THOMAS KOHL, DON NATZKE, GARY SCHWARTZ, MARGARET WATSON (appointed by secretary of health and family services).

The Council on Blindness makes recommendations to state agencies on policies, programs and research that affect the blind or visually impaired and consults with the department on its programs. Its 9 members are appointed by the secretary for staggered 3-year terms, and 7 of them must be blind or visually impaired. Originally, the council was created by Chapter 305, Laws of 1947, as the Advisory Committee of the Blind to advise the Board of Public Welfare and the State Superintendent of Public Instruction. The current council was created in the Department

of Health and Social Services by Chapter 366, Laws of 1969. Its composition and duties are prescribed in Sections 15.197 (2) and 47.03 (9) of the statutes.

*Deaf and Hard of Hearing, Council for the:* TIMOTHY A. JAECH, *chairperson*; CAROL BURNS, YVETTE NEAL DUNLAP, EVA DICKER EISEMAN, MARGARET H. FERRIS, MICHAEL R. GINTER, LEONARD J. PEACOCK, ALEX HARMON SLAPPEY, NANCY C. WOOD (appointed by governor).

The Council for the Deaf and Hard of Hearing advises the department on the provision of effective services to deaf, hard-of-hearing, late-deafened and deaf-blind people. The 9 members are appointed for staggered 4-year terms. The council was created by Chapter 34, Laws of 1979, as the Council for the Hearing Impaired and renamed by 1995 Wisconsin Act 27. Its duties and composition are prescribed in Sections 15.09 (5) and 15.197 (8) of the statutes.

*Domestic Abuse, Council on:* REBECCA G. BANCROFT, JOANNE B. HUELSMAN, *cochairpersons*; BETH A. SCHNORR (designated by senate minority leader), MARGARET WOLFE (designated by assembly speaker), BARBARA LOPEZ-HEFFERNAN (designated by assembly minority leader), ARLINE DAILY-HILLESTAD (designated by senate majority leader); EILEEN CONNOLLY-KESSLER, L. KEVIN HAMBERGER, JACQUELINE D. SCHELLINGER, KATHLEEN F. STOLPMAN, JOYCE TOWNSEND, MAI ZONG VUE, GERALD L. WILKIE. (All are appointed by governor, but those not designated by legislative leadership require senate consent.)

The Council on Domestic Abuse makes recommendations to the secretary on domestic abuse, reviews grant applications, advises the department and legislature on domestic abuse policy, and, in conjunction with the Judicial Conference, develops forms for filing petitions for domestic abuse restraining orders and injunctions. The council's 13 members are appointed for staggered 3-year terms and must have a recognized interest in and knowledge of domestic abuse problems and treatment. Members designated by legislative leadership are not required to be members of the legislature. The council was created by Chapter 111, Laws of 1979, and its composition and duties are prescribed in Sections 15.197 (16) and 46.95 (3) of the statutes.

*Food Protection Practices, Council on:* EDWARD J. LUMP (Wisconsin Restaurant Association representative), A. SCOTT FAULKNER (Wisconsin Innkeepers Association representative), JOHN SKILLRUD (Tavern League of Wisconsin, Inc., representative), EDWARD LACLAIRE (corporate restaurant chain representative), JAMES STEINHOFF (registered city sanitarian), RANDELL WERGIN (registered county sanitarian), DAVID HOLMAN (Wisconsin Conference of Local Public Health Officials representative), JAMES BALZER (registered health and family services department sanitarian), KATHLEEN CULLEN (Technical College System Board staff), RICHARD JOHNSON (UW System employe), VAY RODMAN (member with none of the qualifications of other members). (All are appointed by secretary of health and family services.)

The Council on Food Protection Practices advises the department on requirements for obtaining a certificate of food protection practices and the examinations taken by individuals to obtain a certificate. The department consults with the council prior to promulgating rules on certification and recertification fees, standards for training courses, and procedures for issuing certificates. The 11 council members are appointed for 3-year terms. The Wisconsin Conference of Local Public Health Officials representative must have expertise in environmental health and the UW System employe must have a demonstrated interest and experience in food service sanitation. It was created by 1991 Wisconsin Act 39, and its composition and duties are prescribed in Sections 15.197 (21) and 50.545 of the statutes.

*Hunger, Board on:* SUSAN DREYFUS (designated by secretary of health and family services), *non-voting chairperson*; SENATORS GROBSCHMIDT, vacancy; REPRESENTATIVES MORRIS-TATUM, vacancy; BONNIE BELLEHUMEUR, MICHAEL BROPHY, ARNOLD ELLISON, ROBERT A. NUERNBERG, NORMAN WHITFORD (appointed by governor).

The Board on Hunger annually reviews public and private hunger prevention programs, advises state agencies on the use of state and federal resources and administration of programs for hunger prevention, and awards grants to community-based programs. It develops an annual plan that documents populations and geographic areas that are experiencing hunger and recommends policies that address hunger prevention. The board submits its annual plan to the governor, the secretary of health and family services, the superintendent of public instruction and the legislature. Legislative members must represent both the majority and minority parties. The 5 members appointed by the governor to serve 3-year terms must have a demonstrated interest in hunger pre-

vention and cannot be public employes or officers. The 10-member board was created by 1993 Wisconsin Act 168, and its composition and duties are prescribed in Sections 15.195 (3) and 46.76 of the statutes.

*Mental Health, Council on:* LAWRENCE A. SCHOMER, *chairperson*; BARRY BLACKWELL, GERALD A. BORN, KATHLEEN CROWLEY, PETER DESANTIS, JOANNE M. GRIESBACH, LES L. HIGGENBOTTOM, LEE MARTINSON, JOAN PICKETT, KAREN H. ROBISON, HARLEY B. SPLITT, JUNE WILD, DALE WOLF, KAREN WYDEVEN, MARY ROSE YARLEY (nominated by secretary of health and family services and appointed by governor).

The Council on Mental Health advises the department, governor and legislature on mental health programs; provides recommendations on the expenditure of federal mental health block grants; reviews the department's plans for mental health services; and serves as an advocate for the mentally ill. The 15 members are appointed for staggered 3-year terms and must have demonstrated interest in and knowledge of mental health problems. At least one-half of the members must be consumers of mental health services or persons who are not service providers. The council must include representation of service consumers and their families, service providers, state and county agencies concerned with service, and private organizations interested in mental health. The council was created by 1983 Wisconsin Act 439, and its composition and duties are prescribed in Sections 15.197 (1) and 51.02 of the statutes.

*Pesticide Review Board:* GEORGE E. MEYER (secretary of natural resources), *chairperson*; JOSEPH LEEAN (secretary of health and family services), vacancy (secretary of agriculture, trade and consumer protection).

The Pesticide Review Board collects and analyzes information and recommends rules to the Department of Agriculture, Trade and Consumer Protection for the protection of persons and property from pesticide hazards. Such rules are not effective until approved by the board. The board may report to the governor and legislature on pesticide matters that it feels require government action. The 3-member board was created by Chapter 146, Laws of 1969, and its composition and duties are prescribed in Sections 15.195 (1) and 250.09 of the statutes.

*Pesticide Advisory Council:* GORDON CHESTERS (UW Water Resources Center representative), *chairperson*; vacancy (Department of Agriculture, Trade and Consumer Protection representative), HENRY A. ANDERSON (Department of Health and Family Services representative), LLOYD LUESCHOW (Department of Natural Resources representative), JEFFREY WYMEN (UW College of Agricultural and Life Sciences representative), SCOTT CRAVEN (UW Department of



*Practicing registered nurses, even those far from college campuses, can earn a bachelor's degree through distance learning courses offered by the 5 UW Nursing Schools and UW-Extension. (University of Wisconsin-Extension)*



Wildlife Ecology representative); vacancy (pesticide industry representative), vacancy (agricultural industry representative), vacancy (conservation representative). (Departmental representatives are appointed by Pesticide Review Board; public members are appointed by governor with senate consent.)

The Pesticide Advisory Council assists the Pesticide Review Board in obtaining scientific data and coordinating the state's pesticide regulation, enforcement, research and education functions. The 3 public members serve staggered 3-year terms and must be experts in the use of pesticides. The 9-member council was created by Chapter 146, Laws of 1969, and its composition and duties are prescribed in Section 250.09 (2) of the statutes.

*Radiation Protection Council:* CHARLES R. WILSON (public member appointed by governor), *chairperson*; SENATOR DRZEWIECKI, SUSAN ENGELHARDT, KELLY MUNDT (appointed by senate); REPRESENTATIVE BAUMGART, RALPH GRUNEWALD, MIKE McCORMICK (appointed by assembly); ANDREW B. CRUMMY, DANIEL M. DILLON, J. ROBERT MUELLER, G. JOHN WEIR (public members appointed by governor).

The Radiation Protection Council monitors the development and implementation of public and private radiation-related policies, proposes new state agency programs or changes in existing programs, recommends to the secretary of health and family services possible intervention in federal proceedings by the Wisconsin Department of Justice, and proposes methods to the legislature and examining boards to minimize radiation exposure. All 11 members are appointed for staggered 3-year terms. Each house of the legislature selects one of its members and 2 public members, all of whom are appointed as are standing committees. The 5 public members appointed by the governor must have working experience in radiation protection and represent a balance of medical, economic, scientific and environmental viewpoints. The council was created as the Advisory Radiation Protection Council by Chapter 325, Laws of 1963, and the name was shortened by Chapter 366, Laws of 1969. Its composition and duties are prescribed in Sections 15.197 (12) and 254.36 of the statutes.

INDEPENDENT UNITS ATTACHED FOR BUDGETING, PROGRAM COORDINATION AND RELATED MANAGEMENT FUNCTIONS BY SECTION 15.03 OF THE STATUTES

#### ADOLESCENT PREGNANCY PREVENTION AND PREGNANCY SERVICES BOARD

*Members:* EILEEN MERSHART (Women's Council executive director) (nonvoting member), *permanent chairperson*; WILLIAM L. BECKMAN, LA DON LOVE, KARI MORGAN, PAMELA RUCINSKI, CAROL MASON SHERRILL, DENISE L. SOLIE (voting members appointed by governor); MARY CONROY, NIC DIBBLE, SUE GLEASON, SHARON LIDBERG, BARBARA SCHULER, BONNIE TRUDELL (nonvoting state employe members appointed by Women's Council).

*Administrator:* DAÑA ALDER.

**Mailing Address:** Suite 720, 16 North Carroll Street, Madison 53703.

**Telephone:** (608) 267-2080.

**Fax:** (608) 266-5046.

**Publications:** *The Adolescent Pregnancy Prevention and Services Board* (booklet); *Talking With Preteens about Sexuality* (a guide for parents).

**Number of Employes:** 1.50.

**Total Budget 1995-96:** \$661,800.

**Total Budget 1996-97:** \$544,800.

**Statutory References:** Sections 15.195 (5), 46.93 and 46.935.

**Agency Responsibility:** The Adolescent Pregnancy Prevention and Pregnancy Services Board awards grants on a competitive basis to private and public agencies that work with high-risk adolescents and their families. All projects funded by the board must provide a comprehensive range of services, either directly or through referrals, including health care, education, vocational training, and social and recreational services. Parents or parental figures must be involved in programs to promote positive family relationships.



The 13-member board was created by 1985 Wisconsin Act 56. Its 6 voting members serve 3-year terms and are nominated by statewide organizations that represent an equal balance of viewpoints on pregnancy prevention and pregnancy services. The 6 nonvoting members are employees of state agencies that have a role in teen pregnancy prevention. The executive director of the Women's Council serves as a nonvoting permanent chairperson.

#### COUNCIL ON AMERICAN INDIAN HEALTH

**Members:** MARY BIGBOY, LINDA M. DANIELS, PHYLLIS E. LOWE, PETER MCGESHICK, JR., GLEN PAUL SAFFORD, DORI SHAWANO, JUDITH A. SKENADORE, JOAN M. SLACK, LOUANN H. TOUSEY, JERRY L. WAUKAU (tribal representatives); SANDI CORNELIUS, KAREN L. MARTIN, DON SMITH (public members) (all appointed by governor).

**Contact Person:** RICK HEINZ.

**Mailing Address:** P.O. Box 309, Madison 53701-0309.

**Telephone:** (608) 267-7122.

**Fax:** (608) 267-2832.

**Statutory References:** Sections 15.197 (22) and 46.35.

**Agency Responsibility:** The Council on American Indian Health recommends to and periodically updates for the Department of Health and Family Services a state plan for the improvement of physical and mental health services for American Indians residing in Wisconsin. In addition to submitting the plan to the department, it maintains liaison with various other state agencies and recommends legislation concerning American Indian health care. It submits an annual report to the legislature and the Joint Legislative Council's American Indian Study Committee and seeks funding and cooperation from private and government agencies to conduct an assessment of American Indian health care needs.

The council's 13 members are appointed to 3-year terms, and at least 9 members are selected from names submitted by Wisconsin tribes or the Great Lakes Inter-Tribal Council, Inc. All members must have a demonstrated interest in and knowledge of health care issues affecting American Indians in this state. The council was created by 1993 Wisconsin Act 16.

#### CHILD ABUSE AND NEGLECT PREVENTION BOARD

**Members:** BRUCE F. PAMPERIN (public member appointed by governor), *chairperson*; SENATOR DARLING (appointed by senate president), SENATOR CLAUSING (appointed by senate minority leader); REPRESENTATIVE HUEBSCH (appointed by assembly speaker), REPRESENTATIVE LA FAVE (appointed by assembly minority leader); KARI BENISH (designated by governor), SUSAN GOODWIN (designated by attorney general), SUSAN DREYFUS (designated by secretary of health and family services); WILLIAM BERKAN (designated by superintendent of public instruction); CAROL GAMMON KUNZ, SANDRA MCCORMICK, MICHAEL J. MCGUIRE, DONNA O'BRIEN, MARY D. POSKO, KENNETH N. SORTEDAHL II, ROBERT J. VAN DOMELEN (public members appointed by governor).

**Executive Director:** NADINE A. SCHWAB.

**Mailing Address:** Suite 614, 110 East Main Street, Madison 53703-3316.

**Telephone:** (608) 266-6871; (800) 262-9922, extension "KIDS".

**Fax:** (608) 266-3792.

**Publications:** Child Sexual Abuse Prevention: Tips for Parents; Positive Parenting Kit; Positive Parenting: Tips on Discipline; Positive Parenting: Tips on Fathering; *Prevention Works* (quarterly newsletter).

**Number of Employees:** 4.00.

**Total Budget 1995-96:** \$1,970,900.

**Total Budget 1996-97:** \$1,973,300.

**Statutory References:** Sections 15.195 (4) and 48.982.

**Agency Responsibility:** The Child Abuse and Neglect Prevention Board administers a matching grants program for early childhood family education centers (also known as family resource

centers), Right from the Start Programs, and community-based child abuse and neglect prevention programs. It reviews grant applications and monitors the service provided under each grant. It also recommends policies to the governor, legislature and state agencies to reduce child abuse and neglect and promotes statewide public awareness. Funding is derived through private contributions, federal matching funds and a charge on duplicate birth certificates.

The 16-member board was created by 1983 Wisconsin Act 27. Its 8 public members serve staggered 3-year terms, and 6 of them must be selected because of their knowledge of the subject. Of the public members, one must be an adult who was a victim of abuse as a child and one a parent who abused or neglected children and received treatment. The board appoints the executive director and staff from the classified service.

#### COUNCIL ON DEVELOPMENTAL DISABILITIES

*Members:* WARREN A. VIEHL (appointed by governor), *chairperson*; LINDA HOELZEL (designated by secretary of workforce development), GERALD A. BORN (designated by secretary of health and family services), JUANITA PAWLISCH (designated by superintendent of public instruction), MARIELLEN KUEHN (designated by UW System president); CINDY BENTLEY, SANDRA L. BUTTS, PATRICIA A. CROSS, RICHARD L. DEAN, JUDITH FELL, DENNIS M. FILIPPELLI, MARI FREDERICK, GERHARDT GNIRK, IRMA Q. GOSSELIN, GEORGE F. JACOBS, JR., ROSEMARIE JOHNSON-BROWN, MARCELLA LANDERS, BARBARA L. LYONS, WILLIAM K. NYSTROM, JESSICA RAYMAKER, JULIE ANN SEHMER, GREGORY J. SHEEHAN, JAMES STRACHOTA, LUCILLE STROM, SANDRA G. TANK, MARY L. WILSON (appointed by governor).

*Executive Director:* JAYN J. WITTENMYER.

**Mailing Address:** P.O. Box 7851, Madison 53707-7851.

**Location:** 722 Williamson Street, Madison.

**Telephone:** (608) 266-7826.

**Fax:** (608) 267-3906.

**Statutory References:** Sections 15.197 (11n) and 51.437 (14r).

**Agency Responsibility:** The Council on Developmental Disabilities advises the Department of Health and Family Services, other state agencies, the legislature and the governor on matters related to developmental disabilities. It was created within the department by Chapter 322, Laws of 1971, and made an independent unit by Chapter 29, Laws of 1977. The statutes do not specify the number of council members, but all who serve are appointed for staggered 4-year terms and must be state residents. The public members appointed by the governor must include representatives of public and private nonprofit agencies that provide direct services at the local level to the developmentally disabled. At least one-half of the council's members must be persons who have developmental disabilities or are the parents or guardians of such individuals, but these members may not be associated with public or private agencies that receive federal funding.

#### EMERGENCY MEDICAL SERVICES BOARD

*Members:* MARVIN L. BIRNBAUM, MARK P. BISHOP, DAN BURNS, RICHARD D. COLLYARD, MARK F. DEGUIRE, CHERYL D. GLOMP, GLORIA MURAWSKY, MARY JEAN PATZNER, KAREN D. RICHTER, DAN WILLIAMS, JUNE C. WINNIE (appointed by governor). *Ex officio* nonvoting members: KENNETH BALDWIN (designated by secretary of health and family services), DONALD HAGEN (designated by secretary of transportation), STEVE TEALE (designated by state director, Technical College System Board), JOSEPH DARIN (state medical director for emergency medical services).

**Mailing Address:** P.O. Box 309, Madison 53701-0309.

**Telephone:** (608) 261-9437.

**Statutory References:** Sections 15.195 (8) and 146.55 (3).

**Agency Responsibility:** The Emergency Medical Services Board appoints an advisory committee of physicians to advise the department on the selection of the state medical director for emergency medical services and to review that person's performance. It also advises the director on medical issues; reviews emergency medical service statutes and rules concerning the transportation of patients; and recommends changes to the Department of Health and Family Services

and the Department of Transportation. The board includes personnel from the appropriate state agencies and related emergency services in its deliberations.

The 15-member board includes 11 voting members, appointed for 3-year terms, who must have an interest and expertise in emergency medical service issues, represent the various geographical areas of the state, and represent the various types of emergency medical service providers. The board was created by 1993 Wisconsin Act 16 and replaced the Emergency Medical Services Assistance Board that was created by 1989 Wisconsin Act 102.

#### MILWAUKEE CHILD WELFARE PARTNERSHIP COUNCIL

*Members:* JOSEPH LEEAN (appointed by governor), *chairperson*; SENATOR MOORE (appointed by senate president); SENATOR DARLING (appointed by senate minority leader); REPRESENTATIVE WALKER (appointed by assembly speaker); REPRESENTATIVE MORRIS-TATUM (appointed by assembly minority leader); ELIZABETH COGGS-JONES, TERRANCE HERRON, ROGER QUINDEL (Milwaukee County board members nominated by Milwaukee County Executive); M. JOSEPH DONALD, MICHAEL J. FALBO, COREY HOZE, SANDRA MAHKORN, WILLIAM MARTIN, FRANCISCO MARTORELL, JAMES NISIEWICZ, JULIA H. TAYLOR, JUANITA WILLIAMS (residents of state); LUIS GARZA, CLIFFORD PITTS (nominated by community advisory committees). (All but legislators are appointed by governor.)

*Contact Person:* TERRY ROE LUND.

**Mailing Address:** P.O. Box 8916 Madison 53708-8916.

**Telephone:** (608) 261-8869.

**Statutory References:** Sections 15.197 (24) and 46.023 (2).

**Agency Responsibility:** The Milwaukee Child Welfare Partnership Council makes recommendations to the Department of Health and Family Services and the legislature regarding policies and plans to improve the child welfare system in Milwaukee County, including a neighborhood-based system for delivery of services. It may also recommend funding priorities and identify innovative public and private funding opportunities. The 19-member council was created by 1995 Wisconsin Act 303. The 15 nonlegislative members of the council are appointed to 3-year terms, and the governor designates one of the public members as chairperson. At least 6 public members must be residents of Milwaukee County.

#### COUNCIL ON PHYSICAL DISABILITIES

*Members:* JOEL M. RODNEY, *chairperson*; ELIZABETH POLING (designated by governor); RICHARD BARTHEL, THOMAS DIEDRICK, LORRAINE HAHN, MARI ELLEN LEHMAN, SCOTT LUBER, VIRGINIA I. LUKKEN, WALTER PERNSTEINER, LINDA ROWLEY, SHELLEY PETERMAN SCHWARZ, JACKIE STENBERG, PAMELA A. WILSON, vacancy (appointed by governor).

*Interim Director:* JAYN J. WITTENMYER.

**Mailing Address:** P.O. Box 7851, Madison 53707-7851.

**Location:** 722 Williamson Street, Madison.

**Telephones:** (608) 266-9667; TTY: (608) 266-6660.

**Fax:** (608) 267-3906.

**Statutory References:** Sections 15.197 (4) and 46.29.

**Agency Responsibility:** The Council on Physical Disabilities develops and modifies the state plan for services to persons with physical disabilities. It advises the secretary of health and family services, recommends legislation, encourages public understanding of the needs of persons with physical disabilities, and promotes programs to prevent physical disability. The 14-member council was created by 1989 Wisconsin Act 202. The governor (or governor's designee) serves *ex officio* on the council; the 13 appointed members serve 3-year terms and must be state residents who have demonstrated professional or personal interest in problems of physical disability. At least 6 members must be persons with physical disabilities; 2 may be parents, guardians or relatives of persons with physical disabilities; and at least one must be a service provider. The council must include equitable representation for sex, race, and urban and rural areas.

## STATE HISTORICAL SOCIETY OF WISCONSIN

*Board of Curators:* GLENN R. COATES, *president*; GERALD D. VISTE, *first vice president*; PATRICIA A. BOGE, *second vice president*; RICHARD H. HOLSCHER, *treasurer*; SENATOR RISSER (senate president); REPRESENTATIVE FREESE (designated by assembly speaker); SENATOR RUDE, REPRESENTATIVE HUBER (minority party members); VIRGINIA R. MACNEIL (designated by governor); MARGARET B. HUMLEKER, THOMAS M. JEFFRIS II, RASMUS B.A. KALNES (appointed by governor with senate consent); MARVEL ANDERSON, THOMAS H. BARLAND, JANICE E. BEAUDIN, JANE B. BERNHARDT, DAVID E. CLARENBACH, JOHN MILTON COOPER, JR., NESS FLORES, ROCKNE G. FLOWERS, PAUL C. GARTZKE, VIVIAN L. GUZNICZAK, CHARLES E. HAAS, BETTE M. HAYES, FANNIE E. HICKLIN, RUTH DE YOUNG KOHLER, GEORGE H. MILLER, DOUGLAS A. OGILVIE, DAVID W. OLIE, JERRY PHILLIPS, MARY CONNOR PIERCE, LAWRENCE T. RIORDAN, JOHN M. RUSSELL, MARY SATHER. (Unless otherwise indicated, curators are elected by the membership of the state historical society.) (The director of the society is designated as the board's secretary.)

**Director:** GEORGE L. VOGT, 264-6440.

*Associate Director:* ROBERT B. THOMASGARD, JR., 264-6442.

*Administrative Services, Division of:* EUGENE L. SPINDLER, *administrator*, 264-6420.

*Archives, Division of:* PETER GOTTLIEB, *State Archivist*, 264-6480.

*Development and State Relations, Division of:* BETSY B. TORRISON, *assistant director*, 264-6589.

*Membership Services, Office of:* DEIRDRE A. CROAL, *director*, 264-6587.

*Public Information, Office of:* ROBERT GRANFLATEN, *director*, 264-6586.

*Historic Preservation, Division of:* JEFF DEAN, *administrator*, 264-6500.

*State Archeologist:* ROBERT A. BIRMINGHAM, 264-6495.

*Historic Sites, Division of:* DAVID L. PAMPERIN, *administrator*, 264-6540.

*First Capitol*, managed by Pendarvis site director, (608) 987-2122; Highway G, Belmont 53510.

*Madeline Island Historical Museum:* STEVE COTHERMAN, *site director*, (715) 747-2415; La Pointe 54850.

*Old Wade House:* JEFFREY SCHULTZ, *site director*, (414) 526-3271; P.O. Box 34, Greenbush 53026.

*Old World Wisconsin:* TOM WOODS, *site director*, (414) 594-6300; S103 W37890 Highway 67, Eagle 53119.

*Pendarvis:* ALLEN SCHROEDER, *site director*, (608) 987-2122; 114 Shake Rag Street, Mineral Point 53565.

*Stonefield Village:* JAMES TEMMER, *site director*, (608) 725-5210; P.O. Box 125, Cassville 53806.

*Villa Louis:* MICHAEL DOUGLASS, *site director*, (608) 326-2721; P.O. Box 65, Prairie du Chien 53821.

*Library Services, Division of:* J. KEVIN GRAFFAGNINO, *state historical librarian*, 264-6534.

*Management Support Services, Division of:* DOTTI KRIEGER, *administrator*, 264-6410.

*Museum, Division of:* WILLIAM CROWLEY, *administrator*, 264-6570 (M/W/F), 264-6569 (T/Th).

*Public History, Division of:* MICHAEL E. STEVENS, *state historian*, 264-6464.

*Local History, Office of:* THOMAS MCKAY, *director*, 264-6583.

*School Services, Office of:* BARBARA MALONE, *director*, 264-6579.

**Mailing Address:** 816 State Street, Madison 53706-1488.

**Archives and Library Location:** 816 State Street, Madison.

**Archives Telephone:** (608) 264-6450.

**Archives Fax:** (608) 264-6486.

**Library Telephone:** (608) 264-6534.

**Library Fax:** (608) 264-6520.

**Museum Location:** 30 North Carroll Street, Madison.

**Museum Telephone:** (608) 264-6555.

**Museum Fax:** (608) 264-6575.

**Publications:** *Badger History Bulletin; Columns; Exchange; Wisconsin Magazine of History; Wisconsin Preservation; National Register of Historic Places Newsletter; Wisconsin Public Documents.* The society also publishes books, research guides, and miscellaneous brochures. Recent publications include *Voices from Vietnam* and *Wisconsin in the Civil War*.

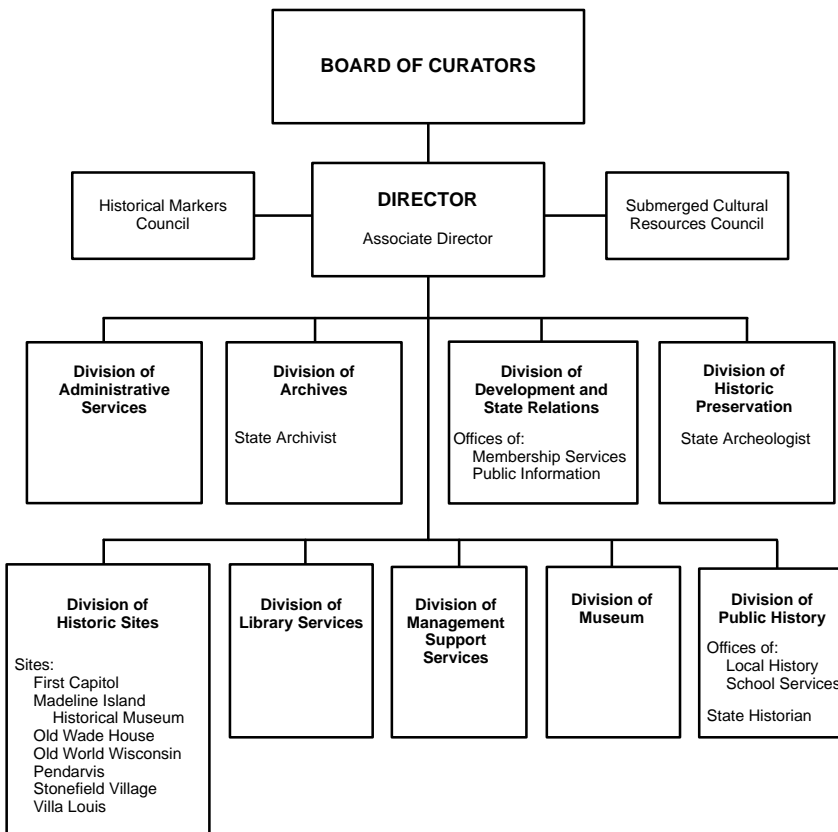
**Number of Employees:** 178.00.

**Total Budget 1995-96:** \$15,554,700.

**Total Budget 1996-97:** \$15,626,600.

**Statutory References:** Section 15.70; Chapter 44, Subchapters I and II.

STATE HISTORICAL SOCIETY



Units attached for administrative purposes under Sec. 15.03: Burial Sites Preservation Board  
Historic Preservation Review Board

**Agency Responsibility:** The State Historical Society of Wisconsin has a statutory duty to collect and preserve historical and cultural resources related to Wisconsin and to make them available to the public. To meet these objectives, the society maintains a major history research collection in Madison and in 13 area research centers; operates a museum, 7 historic sites, and a statewide school services program; and provides technical services and advice to 286 affiliated local historical societies throughout the state. It conducts, publishes and disseminates research on Wisconsin and U.S. history and preserves historic structures and archeological sites by administering the state and national registers of historic places.

**Organization:** The state historical society is both a state agency and a membership organization. The society's Board of Curators includes 8 statutory appointments and up to 30 curators who are selected according to the society's constitution and bylaws. The 3 curators appointed by the governor serve staggered 3-year terms. The board selects the society's director, who serves as administrative head of the society and as secretary to the board.

**Unit Functions:** The *Division of Administrative Services* supervises the society's property and handles insurance, financial and budgetary matters.

The *Division of Archives* acquires, catalogs and makes available primary source materials, including manuscripts, maps, charts, photographs, sound recordings, films, videos and other records pertaining to Wisconsin and U.S. history. The division serves as the state archives, collecting and providing access to permanent records of state and local government. It also makes available the collections of the Wisconsin Center for Film and Theater Research, which is administered jointly by the society and the University of Wisconsin-Madison. The society has notable collections in Wisconsin history and genealogy; labor; business and industry; social action, including civil rights, antiwar movements and reproductive rights issues; mass communications; and dramatic arts, including theater, motion pictures, and television.

The *Division of Development and State Relations* solicits gifts and grants from corporations, foundations and individuals to support the society's mission. It conducts an annual fund-raising campaign and administers the society's membership and public information programs. The division also conducts the society's annual membership meeting and sponsors special events for members and the general public, including a genealogy conference every other year.

The *Division of Historic Preservation* administers Wisconsin's portion of the National Register of Historic Places in partnership with the National Park Service and also maintains the Wisconsin State Register of Historic Places. It identifies and locates places of architectural, historic and archeological significance and nominates them to the registers. It also administers federal grants from the Historic Preservation Fund of the U.S. Department of the Interior for surveying, planning and restoring historic properties and reviews federal, state and local projects for their effect on historic and archeological properties. The division certifies historic building rehabilitation projects for state and federal income tax credits, as well as certifying archeological sites and contiguous lands as eligible to receive property tax exemptions. It issues permits for archeological research on lands owned by the state and its political subdivisions and certifies historic buildings as eligible for the state historic building code. The division administers the historical markers program; identifies, preserves and promotes underwater archeological sites and shipwrecks; and catalogs and preserves historically and culturally significant burial sites. In addition, it conducts a statewide educational program about Wisconsin history, prehistory and historic preservation.

The *Division of Historic Sites* operates historic sites and outdoor museums at 7 locations: First Capitol, Madeline Island Historical Museum, Old Wade House, Old World Wisconsin, Pendarvis, Stonefield Village and Villa Louis. These sites contain historic structures and service buildings that reflect major themes of Wisconsin history, such as ethnic pioneer settlement, mining, farming, fur trade, exploration, transportation, rural life and town development.

The society owns an additional historic site, the Circus World Museum at Baraboo, that is operated independently by the Historic Sites Foundation, Inc. This museum offers an extensive collection of circus memorabilia, including one-of-a-kind circus wagons.

The *Division of Library Services* administers the society's library which has a collection of more than 3.5 million items. Its North American genealogical collection and its newspaper collection are nationally renowned. The division serves as the North American history library



for the University of Wisconsin-Madison, an official depository for Wisconsin state government publications, and a regional depository for U.S. government publications. It also collects selected items from state and provincial governments of the United States and Canada.

The *Division of Management Support Services* manages human resources administration, data processing, telecommunications, affirmative action and clerical services.

The *Division of Museum* collects and preserves the material culture of Wisconsin and interprets the state's history and prehistory for the public. It operates the State Historical Museum, supervises the preservation and development of artifact collections, and operates an archeology program under a cooperative agreement with the Department of Transportation. The division fulfills its educational role through traveling exhibits, as well as tours, public programs and exhibits at the museum in Madison.

The *Division of Public History* promotes public appreciation for history, conducts scholarly research and helps make the history of Wisconsin more accessible to state residents. It also edits and publishes most of the materials issued by the society, including a bimonthly membership newsletter and a quarterly magazine of history. The division offers instructional materials and programs to schools and teachers to assist them in teaching about the history and government of Wisconsin. It assists local affiliated historical societies and museums throughout the state by providing legal advice on incorporation requirements, technical assistance and special programs. Under the auspices of the Wisconsin Council for Local History, the state society annually helps to organize 10 regional conventions and a state convention of local societies.

**History:** The State Historical Society of Wisconsin was originally founded in 1846 as a private association. It was chartered by the Wisconsin Legislature in Chapter 17, Laws of 1853, which made the society responsible for the preservation and care of all records, articles and other materials of historic interest to the state. The society has received state funding since 1854 (Chapter 16) – longer than any other state historical society in the nation.



*Sometimes a historical building cannot be saved, but a meaningful remnant can be. Here State Historical Museum curators take a break after salvaging the sign from the marquee of the historic Strand Theater on Madison's Capitol Square. The theater, which operated some 70 years, was demolished in December 1996. (Robert Granflaten, State Historical Society)*



The legislature expanded the state's historic preservation program in Chapter 29, Laws of 1977, by making the society responsible for preserving historic properties. Chapter 341, Laws of 1981, provided statutory support for local ordinances designed to preserve historic buildings. It set up a framework for a state historic building code with alternative standards for the preservation or restoration of historic structures. 1987 Wisconsin Act 395 strengthened the state's historic preservation laws by creating the State Register of Historic Places to protect historic and pre-historic properties. This law and 1987 Wisconsin Act 399 provided state tax credits and exemptions for owners of certain historic and archeological properties.

1985 Wisconsin Act 29 formalized the practice of allowing the historical society to enter into a lease agreement with the Historic Sites Foundation, Inc., a nonprofit corporation, for the purpose of operating the Circus World Museum.

#### Statutory Councils

*Historical Markers Council:* THOMAS LORFELD (designated by secretary of transportation), *chairperson*; GEORGE L. VOGT (director, state historical society), *secretary*; WILLIAM R. ERNST (designated by superintendent of public instruction), JUDITH BORKE (designated by secretary of natural resources), SHARON FOLCEY (designated by secretary of tourism), RICHARD H. ZEITLIN (designated by secretary of veterans affairs), ROBERT FAY (chairperson, Historic Preservation Review Board), CYNTHIA ARBITURE (designated by president, Wisconsin Council for Local History), SHAWN GRAFF (president, Wisconsin Trust for Historic Preservation). (All are *ex officio* members or their designees.)

The Historical Markers Council approves the placement of markers and plaques of standard design at archeological, historical, geological and legendary sites and districts across the state. Sites of local, state or national significance may be declared eligible for markers. Under a cooperative agreement with the other agencies and organizations represented on the 9-member council, the society approves the markers' texts and arranges for their production. The council was created by Chapter 192, Laws of 1953, as the Historical Markers Commission, composed of 4 *ex officio* members. The 1967 Legislature renamed it a council and transferred it to the historical society, and its membership was expanded to 9 by 1991 Wisconsin Act 39. In 1991 Wisconsin Act 269, the markers program was integrated with the state register of historic places. The council's composition and duties are prescribed in Sections 15.707 (1) and 44.15 of the statutes.

*Submerged Cultural Resources Council:* Voting members: SENATOR DARLING, vacancy (appointed as are standing committees); SENATOR JAUCH, REPRESENTATIVE LINTON (appointed by their respective minority leaders); J. ALFRED BANTA (National Park Service representative, nominated by the service and appointed by state historical society director); CYNTHIA STILES (archeologist); THOM HOLDEN (maritime historian); ISACCO VALLI (maritime museum representative); RICHARD BOYD, ROBERT KORTH, STEVE RADOVAN (public members). Nonvoting members: ROBERT BIRMINGHAM (designated by state historical society director), ELLEN FISHER (designated by the secretary of transportation), SHARON FOLCEY (designated by the secretary of tourism), ROBERT RODEN (designated by secretary of natural resources), GARY GYLUND (designated by Coastal Zone Management Program administrator), AL MILLER (designated by UW-Madison Sea Grant Institute director). (All except *ex officio*, National Park Service and legislator members are appointed by state historical society director after consultation with the secretary of natural resources.)

The Submerged Cultural Resources Council advises the historical society and the Department of Natural Resources regarding the preservation, management and public use of submerged cultural resources, such as shipwrecks. If requested, it reviews applications for archeological permits, including those for recovering abandoned property from state-owned bottomlands. The 17-member council was created by 1991 Wisconsin Act 39. The 7 members appointed by the director serve 3-year terms, and they must include at least 2 certified scuba divers. The council's composition and duties are prescribed in Sections 15.707 (2) and 44.47 (5m) (f) of the statutes.



INDEPENDENT UNITS ATTACHED FOR BUDGETING, PROGRAM COORDINATION AND RELATED MANAGEMENT FUNCTIONS BY SECTION 15.03 OF THE STATUTES

**BURIAL SITES PRESERVATION BOARD**

*Burial Sites Preservation Board:* GEORGE L. VOGT (director, state historical society); ROBERT BOSZARDT, PATRICIA RICHARDS, JAMES STOLTMAN (nominated by Wisconsin Archaeological Survey); ROBERT POWLESS, SR., 2 vacancies (nominated by the Great Lakes Inter-Tribal Council, Inc., and the Menominee Tribe) (appointed by governor). Nonvoting members: JEFF DEAN (state historic preservation officer), ROBERT BIRMINGHAM (state archeologist). (All except *ex officio* members are appointed by governor.)

*Burial Sites Preservation Program Coordinator:* LESLIE EISENBERG.

**Mailing Address:** 816 State Street, Madison 53706-1488.

**Telephones:** (608) 264-6503; (800) 342-7834 (within Wisconsin).

**Statutory References:** Section 15.705 (1); Chapter 157, Subchapter III.

**Agency Responsibility:** The Burial Sites Preservation Board was created to protect all the interests related to human burial sites and to assure equal treatment and respect for all human burials, regardless of ethnic origin, cultural background or religious affiliation. The board develops detailed policies to implement the burial sites preservation program; reviews decisions of the program director or the administrative hearing examiner concerning applications for permits to disturb cataloged burial sites; and reviews the program director's decisions regarding the disposition of human remains and burial objects removed from a burial site. This program was created by 1985 Wisconsin Act 316.

**Organization:** The 9-member board includes 3 members with professional qualifications in archeology, physical anthropology or history and 3 members of federally recognized Indian tribes or bands in Wisconsin who have a knowledge of tribal preservation planning, history or archeology or who serve as elders, traditional persons or spiritual leaders of a tribe. The 6 appointed members serve 3-year terms.

**HISTORIC PRESERVATION REVIEW BOARD**

*Historic Preservation Review Board:* ROBERT FAY, *chairperson*; RICHARD H. ZEITLIN, *vice chairperson*; VICTORIA DIRST, PETER T. EGGERT, PATRICIA HRABIK-SEBBY, THOMAS C. HUBKA, DIANE KEALTY, WILLIAM G. LAATSCH, ELLEN D. LANGILL, CHARLES QUAGLIANA, PHILIP H. SALKIN, VALENTINE J. SCHUTE, JR., CLAUDIA G. SMITH, ERIC J. YONKE, DOROTHY ZEISLER-VRALSTED (all appointed by governor).

*State Historic Preservation Officer:* JEFF DEAN, 264-6500.

**Mailing Address:** 816 State Street, Madison 53706-1488.

**Telephone:** (608) 264-6500.

**Statutory References:** Section 15.705 (2); Chapter 44, Subchapter II.

**Agency Responsibility:** The Historic Preservation Review Board approves, upon recommendation of the State Historic Preservation Officer, nominations to the Wisconsin State Register of Historic Places and the National Register of Historic Places; reviews the surveys and inventories of historic properties undertaken by the state historic preservation program; and reviews and approves the content of the state preservation plan. It approves the distribution of federal grants-in-aid for preservation; advises the state historical society; and requests comments from planning departments of affected municipalities, local landmark commissions and local historical societies regarding properties being considered for nomination to the state and national registers. The board was created by Chapter 29, Laws of 1977.

**Organization:** The board consists of 15 members appointed by the governor to staggered 3-year terms. At least 9 board members must be professionally qualified in the areas of architecture, archeology, art history and history. Up to 6 members may be qualified in related fields, such as landscape architecture, urban and regional planning, law or real estate.

## Office of the Commissioner of INSURANCE

**Commissioner:** JOSEPHINE W. MUSSER, 266-0102.

*Deputy Commissioner:* RANDY BLUMER, 266-0102.

*Insurance Administrator:* PETER FARROW, 264-6239.

*Legal Counsel:* FRED NEPPLE, 266-7726.

*Public Information Officer:* LINDA KEEGAN, 267-9336.

*Administrative Services, Division of:* CLARE STAPLETON CONCORD, *administrator*, 266-5673.

*Regulation and Enforcement, Division of:* GUENTHER RUCH, *administrator*, 266-0295.

*Financial Analysis and Examination, Bureau of:* MATTHEW C. MANDT, *director*, 266-0083.

*Market Regulation, Bureau of:* SUSAN EZALARAB, *director*, 266-8885.

*Health Care Information, Office of:* vacancy, *director*, 266-7568.

**Mailing Address:** P.O. Box 7873, Madison 53707-7873.

**Location:** 121 East Wilson Street, Madison.

**Telephones:** General: (608) 266-3585; Agent licensing: (608) 266-8699; Insurance complaint hotline: (800) 236-8517; Health Insurance Risk-Sharing Plan (HIRSP) hotline: (800) 828-4777; Local Government Property Insurance Fund: (800) 431-6380; State Life Insurance Fund: (800) 562-5558.

**Fax:** (608) 266-9935.

**Internet Address:** [http://badger.state.wi.us/agencies/oci/oci\\_home.htm](http://badger.state.wi.us/agencies/oci/oci_home.htm)

**Publications:** Annual Report; *The Review* (4 times annually); various pamphlets and materials for consumers, insurance companies and agents. (Call or write the Office of the Commissioner of Insurance.)

**Number of Employees:** 141.50.

**Total Budget 1995-96:** \$77,448,500.

**Total Budget 1996-97:** \$78,515,500.

**Statutory References:** Section 15.73; Chapter 601.

**Agency Responsibility:** The Office of the Commissioner of Insurance supervises the insurance industry in Wisconsin. The office examines industry financial practices and market conduct, licenses agents, reviews policy forms for compliance with state legislation, investigates consumer complaints and provides consumer information.

Its goals are to ensure the financial soundness of insurers doing business in Wisconsin; secure fair treatment for policyholders, claimants and insurers; encourage industry self-regulation; emphasize loss prevention as part of good insurance practice; and educate the public on insurance issues.

In addition to its regulatory duties, the agency offers specialized insurance protection through segregated funds and administers the Health Insurance Risk-Sharing Plan (HIRSP) and the Patients Compensation Fund. It also collects fire department dues and premium taxes.

**Organization:** The commissioner of insurance administers the agency and is appointed by the governor with the advice and consent of the senate. The commissioner cannot be a candidate for public office, be involved in soliciting or receiving political contributions or act on behalf of someone else's political candidacy. The deputy commissioner and the director of the Office of Health Care Information are appointed by the commissioner from outside the classified service and serve at the pleasure of the commissioner. The insurance administrator and division administrators are appointed from the classified service by the commissioner.

**Unit Functions:** The *Division of Administrative Services* provides information technology, budget, human resources and other support services for the agency.

The *Division of Regulation and Enforcement* regulates the marketing practices of insurers and agents. It helps consumers resolve problems with insurers and agents, conducts field reviews of insurer marketing practices, investigates agent activities, prepares enforcement proceedings



and prosecutes offenders. Other duties include review of rates, forms and contracts filed with the agency to ensure their compliance with state law; examination of insurer rating procedures; examination of insurer advertising files; and licensing and testing of insurance intermediaries.

The division conducts field audits of the financial condition of insurers domiciled in this state, monitors the activities of nondomestic insurers, oversees insurer rehabilitation and liquidation, and audits and collects insurer taxes and fees. The division administers the fire department dues program in cooperation with the Department of Commerce and the state treasurer. The dues are paid by fire insurers and disbursed to municipalities for fire protection and the fire fighters' pension and disability funds.

The division administers 2 segregated funds. The State Life Insurance Fund offers up to \$10,000 of low-cost life insurance protection to any Wisconsin resident. The Local Government Property Insurance Fund provides mandatory coverage for local governments against fire loss and optional coverage for other forms of damage to property owned by local governments or for which they are liable.

The division manages the Health Insurance Risk-Sharing Plan (HIRSP) that provides health insurance to qualified persons who are not able to find adequate coverage in the private sector due to reduced or cancelled coverage or substantial increases in premiums. It also oversees activities of the Health Care Liability Insurance Plan, which provides liability coverage for hospitals, physicians and other health care providers in Wisconsin, and the Patients Compensation Fund, which provides medical malpractice coverage for qualified health care providers on claims in excess of a provider's underlying coverage.

The *Office of Health Care Information*, created in Section 15.737 (1), Wisconsin Statutes, collects, analyzes and distributes information about the use, cost and quality of health care services in Wisconsin. The office was originally created in the Department of Health and Social Services by 1987 Wisconsin Act 399 and was moved to the Office of the Commissioner of Insurance by 1993 Wisconsin Act 16.

**History:** State regulation of insurance dates back to 1870 when Chapter 56 created a Department of Insurance in the secretary of state's office to license agents and, upon complaint, examine the books of fire and inland navigation insurance companies. In 1878 (Chapter 214), the legislature created a separate Department of Insurance, headed by a commissioner appointed by the governor, to perform the same functions. From 1881 to 1911, based on Chapter 300, Laws of 1881, an elected commissioner administered the insurance department. With the enactment of Chapter 484, Laws of 1911, the insurance commissioner was again made an appointee. The 1967 executive branch reorganization act renamed the department the Office of the Commissioner of Insurance and continued it as an independent regulatory agency.

Other regulation highlights include the development of the standard fire insurance contract in 1891 (Chapter 195) and stricter regulation of the life insurance industry in 1907 to prevent fraud and misrepresentation. In 1911 and 1913, Wisconsin added coverage of local governments' property and buildings under the State Insurance Fund.

Wisconsin became the only state to establish a state life insurance fund for its residents under Chapter 577, Laws of 1911, which authorized the Department of Insurance to issue life insurance and annuity contracts. Since 1947 (Chapters 487 and 521), the agency has been responsible for review of all insurance policy premium rates. Wisconsin's current insurance laws are largely the result of a recodification developed between 1967 and 1979 by the Legislative Council, and they have served as a basis for the model acts adopted by the National Association of Insurance Commissioners.

#### **Statutory Boards and Council**

*Health Insurance Risk-Sharing Plan, Board of Governors of the:* PETER FARROW (designated by insurance commissioner), *chairperson*; WILLIAM FELSING, JENNIFER HOCKIN, CLAIRE W. JOHNSON, ROBERT WOOD (representing participating insurers); DIANNE GREENLEY, DAN JOHNSON, ANNETTE STEBBINS (public members). (All appointed by commissioner.)

The Board of Governors of the Health Insurance Risk-Sharing Plan oversees the Health Insurance Risk-Sharing Plan and selects the insurer to administer the plan. The 8-member board includes 4 members representing participating insurers (2 of whom represent nonprofit corpora-

tions) and 3 public members who must not be professionally affiliated with the practice of medicine, a hospital or an insurer. Appointed members serve staggered 3-year terms. At least 2 of the public members must be persons who are reasonably expected to qualify for plan coverage themselves or have a child or spouse who could qualify. The insurance commissioner or the commissioner's designee, who must be an employe of the office of the commissioner, serves as chairperson. The board was created by Chapter 313, Laws of 1979, and its composition and duties are prescribed in Section 619.15 of the statutes.

*Insurance Security Fund, Board of Directors of the:* JOHN CLEARY (insurer representative appointed by commissioner), *chairperson*; JOSEPHINE W. MUSSER (insurance commissioner), KEVIN O'CONNOR (representing attorney general), JACK C. VOIGHT (state treasurer); JAMES E. CRIST, DAVID DIERCKS, JAMES ELDRIDGE, KENNETH J. ERLER, J. STANLEY HOFFERT, WILSON D. PERRY, JAMES THOMAS, TOD J. ZACHARIAS, vacancy (insurance industry representatives appointed by commissioner).

The Board of Directors of the Insurance Security Fund administers the insurance security fund that protects insurance policyholders from excessive delay and loss in the event of insurer liquidation. The fund also supports continuation of coverage under many life, annuity, and health policies. It is financed by an assessment paid by most insurers in this state. The board consists of not fewer than 7 nor more than 14 members, including the attorney general, state treasurer, and insurance commissioner. The industry members must be chosen from representatives of insurers who are subject to the security fund law, and one member must be a representative of a service insurance corporation. The board was originally created in Chapter 144, Laws of 1969, with substantial revisions in Chapter 109, Laws of 1979, and its composition and duties are prescribed in Sections 646.12 and 646.13 of the statutes.

*Patients Compensation Fund/Health Care Liability Insurance Plan, Board of Governors of the:* RANDY BLUMER (designated by insurance commissioner), *chairperson*; ROD OPSAL (named by Wisconsin Hospital Association), *vice chairperson*; CHRISTOPHER S. SPENCER (insurance industry representative), *secretary*; JANET L. FAGAN, DAVID MAURER (insurance industry representatives); DONALD TAITELMAN (named by State Bar of Wisconsin); DENNIS ROBERTSON (named by Wisconsin Academy of Trial Lawyers); MARK ADAMS, WALTER MORITZ (named by State Medical Society of Wisconsin); PATRICIA A. CHRITTON, KERMIT L. NEWCOMER, ELAINE THOMSEN, vacancy (public members appointed by governor; insurance industry representatives appointed by commissioner).

The Board of Governors of the Patients Compensation Fund/Health Care Liability Insurance Plan oversees the health care liability plans for licensed physicians and nurse anesthetists, medical partnerships and corporations, cooperative sickness care associations, ambulatory surgery centers, hospitals, some nursing homes and certain other health care providers. The 13-member board also supervises the Patients Compensation Fund which pays medical malpractice claims in excess of a provider's underlying coverage. The 4 public members serve staggered 3-year terms, and at least 2 of them must not be attorneys or physicians nor be affiliated with hospitals or insurance companies. The insurance commissioner or the commissioner's designee, who must be an employe of the office of the commissioner, serves as chairperson. The board was created by the medical malpractice law, Chapter 37, Laws of 1975, and its composition and duties are prescribed in Sections 619.04 (3), 655.001 (1) and 655.27 of the statutes.

*Patients Compensation Fund Peer Review Council:* WALLEEN J. CAPPER, *vice chairperson*; JOHN E. INMAN, *secretary*; LEO BARGIELSKI, CHARLES W. SCHAUBERGER, vacancy (appointed by the Board of Governors of the Patients Compensation Fund/Health Care Liability Insurance Plan).

The Patients Compensation Fund Peer Review Council reviews, within one year of the first payment on a claim, each claim for damages arising out of medical care provided by a health care provider or provider's employe, when the claim is paid by any of the following: the Patients Compensation Fund, a mandatory health care risk-sharing plan, a private health care liability insurer or a self-insurer. The 5-member council can recommend adjustments in fees paid to the Patients Compensation Fund and the Health Care Liability Insurance Plan or premiums paid to private insurers, if requested by the insurer. The Board of Governors of the Patients Compensation Fund/Health Care Liability Insurance Plan appoints the council and designates its officers and the terms served by its members. Not more than 3 members may be physicians. The chairperson

must be a physician, who will also serve as an *ex officio* nonvoting member of the Medical Examining Board. The council was created by 1985 Wisconsin Act 340, and its composition and duties are prescribed in Section 655.275 of the statutes.

INDEPENDENT BOARDS ATTACHED FOR BUDGETING, PROGRAM COORDINATION AND RELATED MANAGEMENT FUNCTIONS BY SECTION 15.03 OF THE STATUTES

**BOARD ON HEALTH CARE INFORMATION**

*Members:* RONALD H. DIX, *chairperson*; TERRI L. POTTER, *vice chairperson*; DONNA HOROSCHAK, *secretary*; DIANE EBERSBERGER, GLEN E. GRADY, CAROL M. GRAHAM, BRADLEY L. MANNING, JR., JULIANE M. SAXON, M. GARVIN SHANKSTER (appointed by governor).

**Mailing Address:** P.O. Box 7984, Madison 53707-7984.

**Location:** 121 East Wilson Street, Madison.

**Telephone:** (608) 266-7568.

**Statutory References:** Sections 15.09 (1), 15.735 (2) and 153.07.

**Agency Responsibility:** The Board on Health Care Information advises the Office of Health Care Information on the collection, analysis and dissemination of health data. It also approves administrative rules proposed by the Office of the Commissioner of Insurance on the subject of health care information. The board was created by 1987 Wisconsin Act 399 and transferred to the commissioner's office by 1993 Wisconsin Act 16. Its 9 members are appointed to 4-year terms, and the majority of them may neither be nor represent health care providers.

**SMALL EMPLOYER INSURANCE BOARD**

*Small Employer Insurance Board:* JOSEPHINE W. MUSSER (insurance commissioner), *chairperson* (nonvoting); KATHLEEN I. GILE, 4 vacancies (employee representatives); DENNIS DORN, PHILIP C. HAUCK, JOHN L. KOMIVES, EDWARD F. TREICK, vacancy (employer representatives). (All, except insurance commissioner, appointed by governor with senate consent.)

**Mailing Address:** P.O. Box 7873, Madison 53707-7873.

**Location:** 121 East Wilson Street, Madison.

**Telephone:** (608) 267-9455.

**Statutory References:** Sections 15.735 (1), 635.21 and 635.23.

**Agency Responsibility:** The Small Employer Insurance Board, created by 1991 Wisconsin Act 250, formulates, supervises and may modify a plan for health insurance coverage for employees of small businesses. It promulgates rules to administer the plan, subject to approval by the commissioner of insurance, and may determine: the basic benefits small employers offer; the extent to which the plan must comply with state mandated health insurance coverage; employer eligibility for participation in the plan; the plan's deductibles, copayments and maximum payments; and whether or not to allow waiting or probationary periods for employee coverage. The board reports annually to the legislature and may submit proposals for improvement of the plan.

The 11-member board includes the insurance commissioner or the commissioner's designee who serves as nonvoting chairperson. The 10 appointed members serve 3-year terms. The 5 employer and 5 employee representatives must be from small businesses eligible to participate in the plan.

---



**State of Wisconsin  
INVESTMENT BOARD**

*Members:* JOHN PETERSEN III (public member), *chairperson*; JOSEPH E. GORMAN (public member), *vice chairperson*; ERIC O. STANCHFIELD (nonteacher appointed by Wisconsin Retirement Board), *secretary*; MARK D. BUGHER (secretary of administration); GEORGE H. HAHNER (teacher appointed by Teachers Retirement Board); NORMA DE HAVEN (local government representative appointed by governor with senate consent); JON D. HAMMES, JAMES R. NELSEN (pending senate confirmation), WILLIAM R. SAUEY (pending senate confirmation)(public members). (Public members are appointed by governor with senate consent.)

**Executive Director:** PATRICIA LIPTON, 266-9451.

*Administrative Services:* KEN JOHNSON, *chief administrative officer/executive assistant*, 267-0221.

*Chief Investment Officer:* MICHAEL McCOWIN, 261-9349.

*Domestic Equities Group:*

*Large Cap Modeled Portfolio:* vacancy, *investment director*.

*Large Cap Issue Selection Portfolio:* TRISH REOPELLE, *portfolio manager*.

*Mid Cap Portfolio:* STEVE HILMER, *investment director*, 267-0648.

*Small Cap Portfolio:* JOHN NELSON, *investment director*, 266-7232.

*International Equities Group:* CHRISTIAN DEROLD, *investment director*, 267-2924.

*Nontraditional Investments Group:* JAMES R. SEVERANCE, *investment director*, 267-2052.

*Private Placements Group:* ROBERT L. ZOBEL, *investment director*, 266-1316.

*Public Fixed Income Group:*

*Core Bond Portfolio:* JOHN ZWADZICH, *investment director*, 266-2047.

*Intermediate Duration Portfolio:* JON TRAVER, *investment director*, 266-2077.

*Global Portfolio:* ALAIN HUNG, *portfolio manager*, 267-2257.

*Market Evaluation Portfolio:* SALLY LEE, *investment director*, 266-2043.

*State Investment Fund:* JON TRAVER, *investment director*, 266-2077.

*Internal Audit:* vacancy, *internal auditor*.

*Investment Operations and Information Technology:* GEORGE R. NATZKE, *chief financial officer*, 267-2059.

*Legal Services:* KURT N. SCHACHT, *general counsel*, 266-2040; KEITH JOHNSON, *assistant general counsel*, 266-8824.

*Real Estate Group:* ROBERT H. SEVERANCE, *investment director*, 266-7111.

**Mailing Address:** P.O. Box 7842, Madison 53707.

**Location:** 121 East Wilson Street, Madison.

**Telephone:** (608) 266-2381; Hotline: (800) 424-7942.

**Fax:** (608) 267-0883.

**Internet Address:** <http://www.badger.state.wi.us/agencies/invbd>

**Publication:** Annual Report.

**Number of Employees:** 96.50.

**Total Budget 1995-96:** \$8,050,400.

**Total Budget 1996-97:** \$8,464,900.

**Statutory References:** Section 15.76; Chapter 25.

**Agency Responsibility:** The State of Wisconsin Investment Board is responsible for investing the assets of the Wisconsin Retirement System, the State Life Insurance Fund, the Local Government Property Insurance Fund, the State Historical Society of Wisconsin Trust Fund, the Patients' Compensation Fund, the State Investment Fund, and, beginning in 1997, the assets of the Tuition Trust Fund used for the college tuition prepayment program.

For purposes of investment, the retirement system's assets are divided into 2 funds – the Fixed Retirement Investment Trust and the Variable Retirement Investment Trust. The fixed trust fund is a broadly diversified portfolio of bonds, common stocks, corporate loans and real estate holdings. The variable trust fund is invested primarily in common stocks. On December 31, 1996, Wisconsin Retirement System trust funds constituted approximately \$42 billion of the \$46 billion managed by the Investment Board.

The State Investment Fund invests the commingled cash balances of various state and local government funds in short-term investments with earnings and losses distributed on a pro rata basis to the individual component funds. The fund encompasses the cash balance of the state's general fund and over 46 separate state trust funds, including the Children's Trust Fund, the Lottery Fund, the Recycling Fund, the Tuition Trust Fund, and the Wisconsin Election Campaign Fund, as well as various state agency and department accounts. Authorized local governments may participate by depositing moneys in the Local Government Pooled-Investment Fund within the State Investment Fund.

**Organization:** The State of Wisconsin Investment Board is a 9-member corporate body. All but the secretary of administration (or the secretary's designee) are appointed for 6-year terms. Of the 5 public members, at least 4 must each have had a minimum of 10 years' investment experience. No public member may have a financial interest in or be employed by a dealer or broker in securities, mortgages or real estate investments.

The board appoints the executive director and the internal auditor from outside the classified service. The executive director, with the board's participation, appoints the chief investment officer and the investment directors from outside the classified service. All other professional employees are appointed by the executive director from outside the classified service. No employee of the State Investment Board may have any direct or indirect financial interest in any firm engaged in the sale or marketing of real estate or investments, nor can an employee "render investment advice to others for remuneration."

**Unit Functions:** *Administrative Services* is responsible for administration of the agency budget, legislative liaison, policy analysis and general administrative services.

The *Chief Investment Officer*, created in Section 25.167, Wisconsin Statutes, by 1995 Wisconsin Act 274, is appointed from outside the classified service by the executive director with the participation of the investment board. Under the supervision of the executive director, the chief investment officer monitors and directs the activities of the investment directors for compliance with board investment policies, guidelines and reporting procedures.

The *Domestic Equities Group* buys and sells publicly traded equity securities for both the fixed and variable retirement investment trust funds. It consists of 4 separately managed portfolios with different investment styles or market segments and broadly diversified holdings in domestic stocks.

The *International Equities Group* invests in publicly traded equity securities of non-U.S. companies for both the fixed and variable retirement investment trust funds.

The *Nontraditional Investments Group* invests across asset classes in either domestic or international markets. Investments include public and private equities and fixed income instruments, partnerships, other funds and a variety of structured investments.

The *Private Placements Group* makes individually negotiated, long-term loans to a wide range of corporate borrowers and invests in funds that specialize in venture capital and leveraged buy-out investments.

The *Public Fixed Income Group* manages 4 separate long-term portfolios, comprised of domestic corporate and government bonds and international government bonds, which are invested for the state retirement system and certain other funds. It also manages short-term investment of the pooled cash balances of various state and local government funds. (These investments are limited by law to high quality, highly liquid securities with short maturities.)

*Internal Audit* is directed by the internal auditor, created in Section 25.165, Wisconsin Statutes, by 1995 Wisconsin Act 274. The Internal Audit unit may review any activity of the board and have access to records of the board and any external party under contract with the board. The auditor plans and conducts audits under the direction of the board; assists with external au-

dits and reviews of the board; and monitors the board's contractual agreements with financial institutions, investment advisers, and any other external party providing investment services.

*Investment Operations and Information Technology* is responsible for the support of investment activities, securities lending and data processing.

The *Real Estate Group* invests in real estate through ownership of institutional quality properties and real estate financing vehicles.

**History:** The State of Wisconsin Investment Board traces its beginnings to Chapter 459, Laws of 1921, which created both a pension system for teachers and the Annuity Board to invest the pension funds. The 1929 Legislature reorganized the board, named it the Annuity and Investment Board, and made it responsible for investing all state nonoperating funds, except the school funds that remained under control of the Commissioners of Public Lands (Chapter 491).

The 1925 Legislature, in Chapter 449, insured state funds on deposit in state banks by creating a deposit fund, managed by the state treasurer under the direction of the State Board of Deposits. The board's duties were to designate the banks in which state funds could be deposited and to specify the maximum amount of state funds each could receive. Participating banks paid into the deposit fund, which reimbursed any losses incurred through bank failure.

Chapter 511, Laws of 1951, created the Investment Board to carry out the investment functions of the Annuity and Investment Board and the State Board of Deposits. Although state funds had been invested since 1911, the 1951 reorganization increased the types of investments the board could consider for the funds under its supervision. Since 1951, the legislature has created, and in some cases abolished, a number of funds for which the board is responsible.

1995 Wisconsin Act 274 required the appointment of a chief investment officer, created an internal audit unit, prohibited the investment of certain funds in derivatives and made other changes relating to the management and legislative oversight of the board.

---



**Department of  
JUSTICE**

**Attorney General: JAMES E. DOYLE**, 266-1221, 114 East, State Capitol.

*Deputy Attorney General: BURNEATTA L. BRIDGE*, 266-1221, 114 East, State Capitol.

*Executive Assistant: ANDREW COHN*, 266-0425, 123 West Washington Avenue.

*Research and Information: JAMES M. HANEY, director*, 266-1221, 114 East, State Capitol.

*Crime Victims Services, Office of: SUSAN GOODWIN, director*, 266-0109, 3rd Floor, 222 State Street.

**Mailing Address:** P.O. Box 7857, Madison 53707-7857.

**Locations:** Attorney General's Office, 114 East, State Capitol; Department of Justice, 123 West Washington Avenue, Madison.

**Telephones:** General: (608) 266-3004; Arson Tip Line: (800) 362-3005; Office of Crime Victims Services: (800) 446-6564; Firearms Helpline: (800) 262-4867; Drug Tip Helpline: (800) 622-DRUG (622-3784).

**Fax:** State Capitol: (608) 267-2779; 123 West Washington Avenue: (608) 267-2223.

*Criminal Investigation, Division of: JAMES WARREN, administrator*, 266-1671; *ERIK H. ERICKSON, administrative officer*, 266-1671, 123 West Washington Avenue.

*Arson Bureau: CAROLYN S. KELLY, director*, 266-1671.

*Gaming Enforcement Bureau: GARY H. HAMBLIN, director*, 266-1671.

*Organized Crime and General Investigations Bureau: ROBBIE R. LOWERY, director*, 266-1671.

*White Collar Crimes Bureau: DAVID COLLINS, director*, 266-1671.

*Law Enforcement Services, Division of: DAVID STEINGRABER, administrator*, 266-7751; *MICHAEL ROBERTS, assistant administrator*, 266-7052, 123 West Washington Avenue.

*Crime Information Bureau: MICHAEL MOSCHKAU, director*, 266-7314.

*Crime Laboratory Bureau-Madison: JEROME A. GEURTS, director*, 266-2031.

*Crime Laboratory Bureau-Milwaukee: MICHAEL J. CAMP, director*, (414) 382-7500.

*Crime Laboratory Bureau-Wausau: MICHAEL A. HAAS, director*, (715) 845-8626.

*Training and Standards Bureau: DENNIS HANSON, director*, 266-7864.

*Legal Services, Division of: MATTHEW J. FRANK, administrator*, 266-0332; *ROBERT HILLNER, administrative officer*, 266-3860; *JUAN COLAS, deputy administrator*, 264-6360, 123 West Washington Avenue.

*Civil Litigation Unit: CHARLES HOORNSTRA, director*, 266-9945.

*Contracts, Commercial and Property Unit: MICHAEL E. PERINO, director*, 266-0321.

*Criminal Appeals Unit: SALLY WELLMAN, director*, 266-1677.

*Criminal Litigation, Antitrust and Consumer Protection Unit: STEVEN D. EBERT, director*, 266-9594.

*Employment Law Unit: JENNIFER SLOAN LATTIS, director*, 267-3519.

*Environmental Protection Unit: JOANNE KLOPPENBURG, director*, 266-9227.

*Government Operations and Administrative Law Unit: STEVEN TINKER, director*, 266-0764.

*Medicaid Fraud Control Unit: JUAN COLAS, director*, 264-6360.

*Management Services, Division of: SANDRA BURIE, administrator*, 266-7326, 123 West Washington Avenue.

*Budget and Finance, Bureau of: JACK BENJAMIN, director*, 267-6714.

*Computing Services, Bureau of: ROBERT JOSWIAK, director*, 266-7076.

*Human Resource Services, Bureau of: GARY MARTINELLI, director*, 266-0461.

*Narcotics and Dangerous Drugs, Division of: JOHNNIE SMITH, administrator*, 267-1333; *ERIK H. ERICKSON, administrative officer*, 266-1671, 123 West Washington Avenue.



*Investigative Operations Bureau:* JOHN KILLIAN, *director*, 267-1333.

*Special Operations Bureau:* CRAIG S. KLYVE, *director*, 267-1333.

*Special Agents in Charge, Regional Offices:*

*Appleton:* JED SPERRY, (414) 832-2750.

*Eau Claire:* JOHN ACCARDO, (715) 839-3830.

*Madison:* DAVID MATTHEWS, (608) 242-5393.

*Milwaukee:* DANIEL L. LAYBER, (414) 227-2100.

**Publications:** Opinions of the Attorney General; Annual Report; Criminal Investigation and Physical Evidence Handbook; Domestic Abuse Incident Report; Law Enforcement Bulletin; *When Crime Strikes: Injured Victims Can Get Help*; Wisconsin Law Enforcement Film Catalog; *Wisconsin Open Meetings Law: A Citizen's Guide*; *Wisconsin Open Meetings Law: A Compliance Guide*; Wisconsin Prosecutor's Newsletter.

**Number of Employees:** 540.40.

**Total Budget 1995-96:** \$58,505,300.

**Total Budget 1996-97:** \$56,594,400.

**Constitutional References:** Article VI, Sections 1, 1p and 3.

**Statutory References:** Section 15.25; Chapter 165.

**Agency Responsibility:** The Department of Justice provides legal advice and representation, criminal investigation, and various law enforcement services for the state. It represents the state in civil cases and handles criminal cases that reach the Wisconsin Court of Appeals or the Wisconsin Supreme Court. It also represents the state in criminal cases on appeal in federal courts and participates with other states in federal cases that are important to Wisconsin. The department provides legal representation in lower courts when expressly authorized by law or requested by the governor, either house of the legislature, or a state agency head. It also represents state agencies in court reviews of their administrative decisions.

**Organization:** The Department of Justice is directed by the attorney general, a constitutional officer who is elected on a partisan ballot to a 4-year term. The attorney general selects the department's division administrators, and, with the exception of the administrator of the Division of Criminal Investigation, all are appointed from outside the classified service.

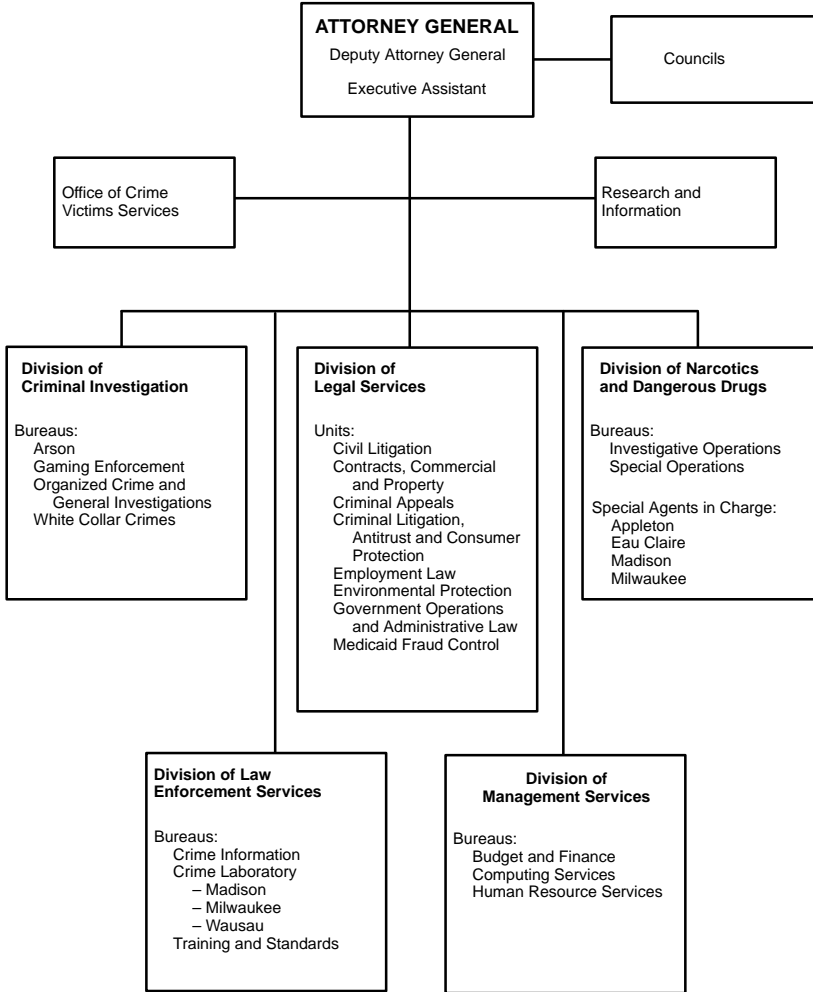
**Unit Functions:** The *Office of Crime Victim Services* administers state and federal programs that assist victims of crime. The Crime Victim Compensation Program reimburses victims and their dependents for out-of-pocket medical and other expenses. The Sexual Assault Victim Services Program provides grants to nonprofit organizations that offer services to sexual assault victims. The Victim/Witness Assistance Program reimburses counties for a percentage of the costs of providing services to victims and witnesses in the criminal justice process. These programs receive funding from surcharges assessed against convicted criminals. Federal funding through the Victims of Crime Act of 1984 supports victim services throughout the state, including services for domestic violence and child abuse victims, crisis intervention, and support for victims of homicide and drunk driving.

The *Division of Criminal Investigation*, created in Section 15.253 (2), Wisconsin Statutes, by 1991 Wisconsin Act 269, investigates crime that is statewide in nature. Special agents work closely with local law enforcement officials and prosecuting attorneys to investigate and prosecute crimes involving arson, explosions of suspected criminal origin, gambling laws, child pornography, antitrust violations, financial crimes and public corruption. Upon request, the division assists local law enforcement agencies on cases, such as murders and multijurisdictional theft rings.

The *Division of Law Enforcement Services* provides advanced technical services, information and training to state and local law enforcement agencies and jails. It maintains central fingerprint identification records and computerized criminal history information. The statewide telecommunications system links Wisconsin police agencies to national, state and local crime files. Three crime laboratories help law enforcement officers analyze physical evidence.



DEPARTMENT OF JUSTICE



Unit attached for administrative purposes under Sec. 15.03: Law Enforcement Standards Board

The division ensures that the mandatory recruitment and training qualifications established by the Law Enforcement Standards Board are met by all officers at the municipal, county and state levels. Twenty-one regional academies are certified by the board to offer basic training for law enforcement recruits, as well as the basic training for jail and security detention officers, or to provide the annual recertification classes required for all officers. Training resources and instructors are also provided to local law enforcement organizations.

The *Division of Legal Services* provides legal representation, opinions and advice to the governor, legislature and other state officers and agencies. It provides legal opinions to district attorneys and county corporation counsels. The division enforces state environmental, antitrust and Medicaid fraud laws. It assists other state agencies in enforcing antifraud laws relating to securities, insurance and taxes. It also represents the state in all felony and other significant criminal



cases on appeal in state and federal courts. The division represents state employes and agencies in job-related civil actions. At the request of district attorneys, it provides special prosecutors in complex homicide, drug and white collar crime cases.

The *Division of Management Services* prepares the agency budget; manages agency personnel, finances, and facilities; and provides information technology services.

The *Division of Narcotics and Dangerous Drugs*, created in Section 15.253 (4), Wisconsin Statutes, by 1989 Wisconsin Act 122, coordinates the state's drug enforcement and investigation efforts with those of local and federal drug enforcement agencies. It also investigates high level drug traffickers, provides expertise and assistance to local agencies, trains police officers in the enforcement of state narcotics laws, collects and disseminates information about drug trends and activity in the state, and develops strategies to improve drug enforcement efforts in Wisconsin.

**History:** When Wisconsin became a territory in 1836, the U.S. President appointed the attorney general. In 1839, a territorial act gave the governor the power to appoint the attorney general with the consent of the Legislative Council (the upper house of the territorial legislature) to a term of 3 years. The Wisconsin Constitution, as adopted in 1848, provided for an elected attorney general with a 2-year term. A constitutional amendment ratified in 1967 increased the term to 4 years, effective 1971.

Chapter 75, Laws of 1967, named the agency headed by the attorney general the Department of Justice and transferred to its control the State Crime Laboratory, the arson investigation program from the Commissioner of Insurance, and the criminal investigation functions of the Beverage and Cigarette Tax Division of the Department of Revenue. The 1975 Legislature returned alcohol and tobacco tax enforcement to the Department of Revenue.

The 1969 Legislature added enforcement of certain laws related to dangerous drugs, narcotics and organized crime to the duties of the department and created the Public Intervenor to intervene in or initiate proceedings to protect public rights in water and other natural resources. In 1979 (Chapter 189), the legislature transferred the crime victims program from the Department of Industry, Labor and Human Relations to the Department of Justice. 1995 Wisconsin Act 27 transferred the Public Intervenor to the Department of Natural Resources and consumer protection functions to the Department of Agriculture, Trade and Consumer Protection.

#### Statutory Councils

*Crime Victims Council:* PETER HELEIN (law enforcement representative), *chairperson*; GERI HEINZ (victim services representative), *vice chairperson*; LAURIE JORGENSEN (victim services representative); KENNETH KRATZ (district attorney representative); PETER NAZE (judicial representative); ROSANNE BARBER, LYNN BEBEAU, SUE CARNOCK, SHIRLEY KRUG, JEAN LAHTI, MAXINE MARTINEZ-HARRIS, GWENDOLYNNE MOORE, OLUSEGUN SIJUWADE, HANK STARKEY, vacancy (citizen members). (All are appointed by attorney general.)

The Crime Victims Council provides advice and recommendations on victims' rights and services. The 15 members are appointed for staggered 3-year terms. The 10 citizen members must have demonstrated concern for crime victims. Originally named the Crime Victims Compensation Council, it was renamed in Chapter 20, Laws of 1981. The council was created by Chapter 189, Laws of 1979, and its duties and composition are prescribed in Sections 15.09 (5) and 15.257 (2) of the statutes.

*University and Crime Laboratories Cooperation Council:* STANLEY L. INHORN, *chairperson*; J.M. BLOODWORTH, MERLE A. EVENSON, CALVIN HUBER, DAVID JONES, DAVID SCHULTZ, RICHARD A. SPRITZ (appointed by president, UW System).

The University and Crime Laboratories Cooperation Council advises the attorney general on coordinating the work of the state crime laboratories with university research departments. Council members are university staff members who work with the laboratories, and their number is determined by the UW System president. The council was created by Chapter 276, Laws of 1969, and its composition and duties are prescribed in Sections 15.257 (1) and 165.80 of the statutes.



INDEPENDENT UNIT ATTACHED FOR BUDGETING, PROGRAM COORDINATION AND RELATED MANAGEMENT FUNCTIONS BY SECTION 15.03 OF THE STATUTES

**LAW ENFORCEMENT STANDARDS BOARD**

*Law Enforcement Standards Board:* GARY J. BRAZGEL (law enforcement representative), *chairperson*; CHARLES A. TUBBS (law enforcement representative), *vice chairperson*; SUSAN GOODWIN (designated by attorney general), FREDERICK N. FALK (executive director, Office of Justice Assistance), THOMAS HARELSON (designated by secretary of natural resources), WILLIAM SINGLETARY (designated by secretary of transportation); GREGORY J. POTTER (district attorney); JAMES GILMORE (sheriff), EDWARD MICHAEL BAUMANN (police chief), LEROY D. KLEIN, SCOTT E. PEDLEY (law enforcement representatives); JACK ROBINSON, vacancy (local government representatives); LINDA R. YOUNK (public member). Nonvoting member: MICHAEL SANTIMAURO (special agent in charge, Milwaukee FBI Office). (All except *ex officio* members are appointed by governor.)

*Secretary:* DAVID STEINGRABER, *administrator*, Division of Law Enforcement Services.

**Statutory References:** Sections 15.255 and 165.85.

**Agency Responsibility:** The Law Enforcement Standards Board sets minimum employment, education and training standards for law enforcement, tribal law enforcement, and jail and security detention officers. It certifies persons who meet the standards as qualified to be officers. The 15-member board consults with other government agencies regarding the development of training schools and courses, conducts research to improve law enforcement and jail administration and performance, and evaluates governmental units' compliance with standards. Its appointed members serve staggered 4-year terms. The law enforcement representatives must include at least one sheriff and one chief of police. The public member may not be employed in law enforcement. The board was created by Chapter 466, Laws of 1969.

---

**Department of  
MILITARY AFFAIRS**

*Commander in Chief:* GOVERNOR TOMMY G. THOMPSON.

**Adjutant General:** MAJOR GENERAL JEROME J. BERARD, 242-3001.

*Deputy Adjutant General for Army:* BRIG. GEN. JAMES G. BLANEY, 242-3010.

*Deputy Adjutant General for Air:* BRIG. GEN. ALBERT H. WILKENING, 242-3020.

*Executive Assistant:* COL. ANDREW M. SCHUSTER, 242-3009.

**Mailing Address:** P.O. Box 8111, Madison 53708-8111.

**Location:** 2400 Wright Street, Madison.

**Telephones:** General: (608) 242-3000; 24-hour emergency management hotline for emergencies and hazardous materials spills: (800) 943-0003.

**Fax:** (608) 242-3111.

*Wisconsin Army National Guard:* BRIG. GEN. JAMES G. BLANEY, *commander*.

*Army Guard Staff:*

*Assistant Adjutant General for Readiness and Training:* BRIG. GEN. EWALD E. BETH.

*Assistant Division Commander, 34th Infantry Division:* BRIG. GEN. PAUL T. OTT.

*State Area Command Director:* BRIG. GEN. JOHN D. LARSON.

*Chief of Staff:* COL. VINCENT J. PINTARRO.

*Army Aviation Director:* COL. KERRY G. DENSON.

*Facilities Director:* ANDREW R. MILLER.

*Information Management Director:* MAJ. BRYAN T. MUCH.

*Logistics Director:* COL. KENNETH H. SOUTHWORTH.

*Maintenance Director:* COL. ROGER L. BRILL.



*Operations and Training Director:* COL. LARRY OLSON.

*Personnel Director:* LT. COL. ARTHUR C. ZULEGER.

*Army National Guard Units (major units):*

*32nd Infantry Brigade (Mechanized) (Madison):* COL. HAROLD J. NEVIN.

*64th Troop Command (Madison):* COL. STEPHEN A. MAYHEU.

*57th Field Artillery Brigade (Milwaukee):* COL. RONALD A. LUEBKE.

*264th Engineer Group (Chippewa Falls):* COL. ROBERT G. TRELAND.

*426th Leadership Regiment (Wisconsin Military Academy) (Fort McCoy):* COL. ROLAND G. ALGER.

*Wisconsin Air National Guard:* BRIG. GEN. ALBERT H. WILKENING, *commander.*

*Air Guard Staff:*

*Chief of Staff:* COL. EUGENE A. SCHMITZ.

*Director of Operations:* LT. COL. JOHN R. CROFT.

*Executive Staff Support Officer:* COL. GERALD C. OLESEN.

*State Staff Personnel Officer:* CAPT. BRIAN S. BUHLER.

*Air National Guard Units (major units):*

*115th Fighter Wing (Madison):* BRIG. GEN. FRED R. SLOAN.

*128th Air Refueling Wing (Milwaukee):* COL. JOHN G. COZAD.

*Combat Readiness Training Center (Volk Field):* COL. JAMES A. McMURRY.

*128th Air Control Squadron (Volk Field):* LT. COL. HERBERT T. DANNENBERG.

*Joint Army/Air Support Staff:*

*Federal Human Resources Management Office:* COL. JAMES KRUECK.

*Public Affairs:* LT. COL. TIM DONOVAN.

*Staff Judge Advocate:* MAJ. TERENCE J. MCARDLE.

*Legal Counsel:* RANDI WIND MILSAP.

*U.S. Property and Fiscal Officer:* COL. HOWARD D. MILLER, Camp Williams, Camp Douglas, (608) 427-7266.

*Emergency Management, Division of:* STEVEN D. SELL, *administrator*, 242-3232; ALAN B. SHANKS, *deputy administrator*, 243-3203.

*Field Services and Disaster Resources, Bureau of:* ALAN B. SHANKS, *director*, 242-3203.

*Technological Hazards, Bureau of:* CHRISTINE C. BACON, *director*, 242-3206.

**Publications:** *At Ease*; Biennial Report; Wisconsin Emergency Management Digest.

**Number of State Employees:** 335.51.

**Total State Budget 1995-96:** \$31,600,500.

**Total State Budget 1996-97:** \$31,030,100.

**Total Federal Budget (annual):** \$143,553,528.

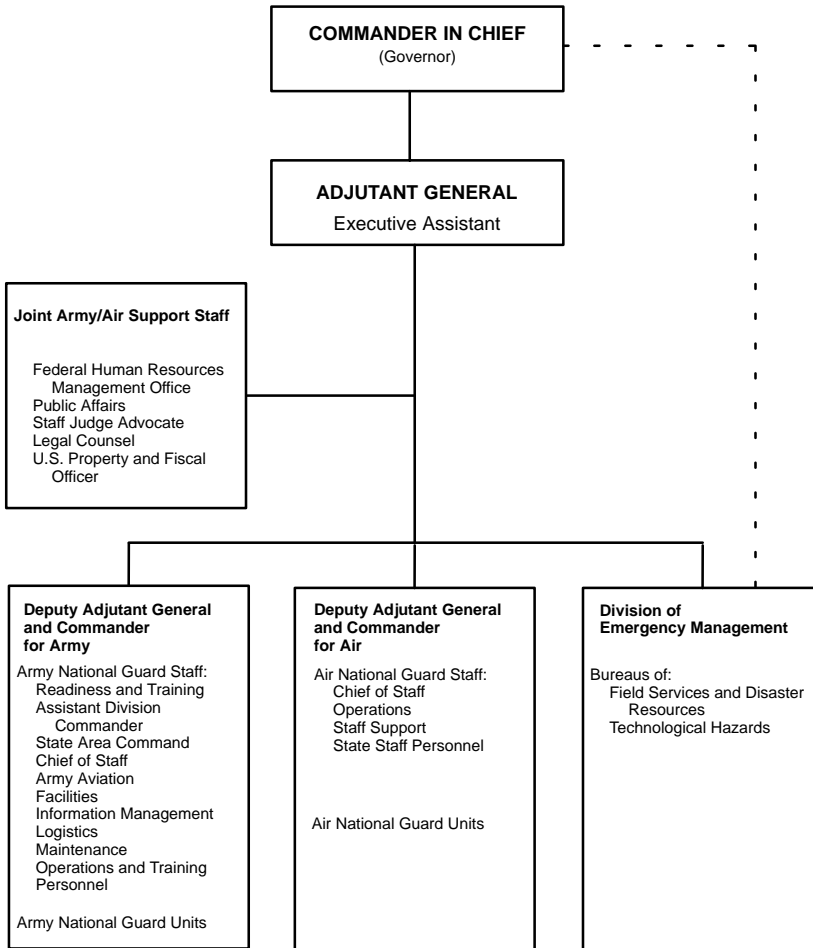
**Constitutional References:** Article IV, Section 29; Article V, Section 4.

**Statutory References:** Sections 15.31 and 15.313; Chapters 21 and 166.

**Agency Responsibility:** The Department of Military Affairs provides an armed military force through the Wisconsin National Guard, which is organized, trained, equipped and available for use under official orders in state and national emergencies. The federal mission of the National Guard is to provide trained units to the U.S. Army and U.S. Air Force in time of war or national emergency. Its state mission is to help civil authorities protect life and property and preserve peace, order and public safety in times of natural or human-caused emergencies.

The *Division of Emergency Management*, created in Section 15.313, Wisconsin Statutes, by 1989 Wisconsin Act 31, is headed by a division administrator appointed by the governor with the advice and consent of the senate. It coordinates the development and implementation of the state emergency operation plan; provides assistance to local jurisdictions in the development of

DEPARTMENT OF MILITARY AFFAIRS



Unit attached for administrative purposes under Sec. 15.03: State Emergency Response Board

their programs and plans; supervises the restoration of public facilities, such as power, water and sewage treatment plants in emergencies; administers private and federal disaster and emergency relief funds; and maintains the state's 24-hour duty officer reporting and response system. The division also conducts training programs in emergency planning for businesses and state and local officials and educational programs for the general public. At the direction of the State Emergency Response Board, the division ensures compliance with state standards and federal requirements under Title III of the 1986 Superfund Amendments and Reauthorization Act concerning registration of hazardous materials and planning for off-site emergencies when extremely hazardous substances are spilled. It also coordinates planning and training for off-site radiological emergencies at 4 nuclear power plants in and near Wisconsin.

**Organization:** The Wisconsin Constitution designates the governor as the commander in chief of the Wisconsin National Guard. The department is headed by the adjutant general who is appointed by the governor for a term of 5 years. The adjutant general must be an officer actively serving in the Army or Air National Guard of Wisconsin who has attained at least the rank of



lieutenant colonel with a minimum of 5 years of continuous, federally recognized commissioned service in the National Guard immediately preceding the date of appointment.

In addition to state support, the Wisconsin National Guard is also funded and maintained by the federal government, and when it is called up for national duty, the U.S. President acts as commanding officer. The federal government provides arms and ammunition, equipment and uniforms, major outdoor training facilities, pay for military and support personnel, and training and supervision. The state provides personnel; conducts training as required under the National Defense Act; and shares the cost of constructing, maintaining and operating armories and other military facilities. The composition of Wisconsin Army and Air National Guard units is authorized by the U.S. Secretary of Defense through the National Guard Bureau, and all officers and enlisted personnel must meet the same physical and educational requirements as members of the regular U.S. Army or U.S. Air Force.

**History:** The 1967 executive branch reorganization created the Department of Military Affairs to assume the state's responsibilities for the Wisconsin National Guard and the functions of the Wisconsin State Armory Board that had been created in 1943 to construct or acquire armories to house and train the National Guard.

Until the 20th century, the United States relied heavily on military units organized by the states to fight its wars. Known as the "minutemen" in the American Revolution, state militias, which could be called up on brief notice, provided soldiers for the Revolutionary War, the Mexican War, the Civil War, and the Spanish-American War. Many Wisconsin guardsmen fought in the latter 2 conflicts, including the "Iron Brigade" of Civil War fame.

In 1792, the U.S. Congress passed a law that required all able-bodied men between 18 and 45 years of age to serve in local militia units, a provision that was incorporated into the territorial statutes of Wisconsin. The Wisconsin Constitution, as adopted in 1848, authorized the legislature to determine the composition, organization and discipline of the state militia.



*Governor Tommy Thompson pulls the lanyard on a Civil War era cannon at the dedication ceremony for the Wisconsin Military Academy at Fort McCoy. The Revolutionary War statue honors the Minute Man soldier, ancestor to today's National Guard. (Department of Military Affairs)*



The 1849 Wisconsin Statutes specified the procedure for the organization of locally controlled “uniform companies”. Each uniform company included 30 men who had to equip themselves with arms and uniforms.

By 1858 (Chapter 87), the legislature provided for the organization of the State Militia, which ultimately replaced the uniform companies. As commander in chief of the militia, the governor appointed the adjutant general and the general officers and issued commissions to the elected officers of uniform companies. The governor could provide arms for the officers, but they were required to supply their own uniforms and horses. Not until 1873 (Chapter 202) was money appropriated from the general fund to help support militia companies. Chapter 208, Laws of 1879, changed the militia’s name to Wisconsin National Guard.

Federal supervision of and financial responsibility for the National Guard came with Congressional passage of the Dick Act in 1903. Congress passed the law in response to the lack of uniformity among state units which became evident during the Spanish-American War and subsequent occupation of the Philippines. The act set standards for guard units, granted federal aid and provided for inspections by regular U.S. Army officers.

The National Defense Act of 1933 formally created the National Guard of the United States, a reserve component of the active U.S. Army. The act allowed the mobilization of intact National Guard units through simultaneous dual enlistment in state and federal military forces. This permitted guard personnel to mobilize for federal duty directly from state status in event of a federal emergency, rather than being discharged to enlist as was done in World War I. A 1990 U.S. Supreme Court case upheld the right of the U.S. Congress to send Army National Guard units (under U.S. Army command) out of the country to train for their federal mission.

Wisconsin guard troops fought in World War I and World War II, with the 32nd “Red Arrow” Infantry Division gaining national recognition. Units of the Wisconsin Guard fought in Korea and more than 1,400 guard members from Wisconsin were sent to the Persian Gulf to participate in Operations “Desert Shield” and “Desert Storm”. In 1996 and 1997, units were called to active federal service to support peacekeeping efforts in the Balkans.

The **Division of Emergency Management** originated as the Office of Civil Defense, which was developed to administer emergency programs in case of enemy attack and was located in the governor’s office under Chapter 443, Laws of 1951. Its predecessors include the Wisconsin Council of Defense, organized by executive order of Governor Julius P. Heil in 1940, and the State Council on Civil Defense, created in the governor’s office by Chapter 9, Laws of 1943. The 1943 council was abolished in 1945 and its functions transferred to the adjutant general, who was appointed director of the Office of Civil Defense by the governor, as permitted in the 1951 law.

Chapter 628, Laws of 1959, renamed the office the Bureau of Civil Defense and added responsibilities for natural and human-caused disasters. The 1967 executive branch reorganization transferred the bureau to the Department of Local Affairs and Development as the Division of Emergency Government. In Chapter 361, Laws of 1979, the division was transferred to the Department of Administration. The division became part of the Department of Military Affairs in 1989 Wisconsin Act 31 and was renamed by 1995 Wisconsin Act 247.

INDEPENDENT UNIT ATTACHED FOR BUDGETING, PROGRAM COORDINATION AND RELATED MANAGEMENT FUNCTIONS BY SECTION 15.03 OF THE STATUTES

#### STATE EMERGENCY RESPONSE BOARD

*State Emergency Response Board:* STEVEN D. SELL (military affairs department, emergency management administrator), *chairperson*; THOMAS N. ANDERSON (health and family services department representative), TERRY GROSENHEIDER (commerce department representative), WILLIAM L. SINGLETARY (transportation department representative), DAVID WOODBURY (natural resources department representative), JOSEPH TREGONING (agriculture, trade and consumer protection department representative), GERALD SANDRY (fire fighting representative), DEAN R. MCKENZIE (law enforcement representative), LEWIS B. HARNED (public or community health services representative), TARIQ AKMUT, NATHAN NISSEN (industry representatives), A. WILLIAM HUELSMAN (small business representative), JAMES BARRETT, GLORIA G. STEFFEN (county or mu-

nicipal government representatives), RONALD WOOCK (farm or agricultural organization representative), JAY G. KOPPLIN (labor organization representative), CARYL E. TERRELL (environmental organization representative). (All except emergency management administrator appointed by governor.)

**Mailing Address:** P.O. Box 7865, Madison 53707-7865.

**Telephone:** (608) 242-3232.

**Fax:** (608) 242-3247.

**Statutory References:** Sections 15.315 (1) and 166.20.

**Agency Responsibility:** The State Emergency Response Board was created by 1987 Wisconsin Act 342 and is responsible for administering the provisions of that act, as well as Title III of the federal 1986 Superfund Amendments and Reauthorization Act, both of which pertain to hazardous chemical substances and spills. The board requires public and private entities who possess hazardous substances to file reports. It establishes local emergency planning committees and oversees the implementation of their plans. The board also administers the emergency planning grant programs that assist local emergency planning committees in complying with state and federal law. In addition, the board sets the fees to be paid to the Department of Transportation by hazardous material transporters and contracts with regional emergency response teams which respond to the most dangerous levels of hazardous substance releases as established by 1991 Wisconsin Act 104.

The 17-member board, which was formerly attached to the Department of Administration, was attached to the Department of Military Affairs by 1989 Wisconsin Act 31. Members serve 4-year terms. The administrator of the Division of Emergency Management is a permanent member.

---

## Department of NATURAL RESOURCES

*Natural Resources Board:* TRYGVE A. SOLBERG (northern member), *chairperson*; BETTY JO NELSEN (southern member), *vice chairperson*; NEAL SCHNEIDER (member-at-large), *secretary*; HERBERT BEHNKE, STEPHEN D. WILLET (northern members); HOWARD POULSON, JAMES E. TIEFENTHALER, JR. (southern members). (All are appointed by governor with senate consent.)

**Secretary of Natural Resources:** GEORGE E. MEYER, 266-2121.

*Deputy Secretary:* DARRELL L. BAZZELL, 266-2252.

*Executive Assistant:* HOWARD S. DRUCKENMILLER, 266-2136.

*Legal Services, Bureau of:* JAMES A. KURTZ, *director*, 266-3695.

*Management and Budget, Bureau of:* JOSEPH P. POLASEK, JR., *director*, 266-2794.

**Mailing Address:** P.O. Box 7921, Madison 53707-7921.

**Location:** State Natural Resources Building (GEF 2), 101 South Webster Street, Madison.

**Telephones:** General: (608) 266-2621; Poacher Hotline: (800) TIP-WDNR (847-9367); Outdoor Report (recorded message): (608) 266-2277; TTY: (608) 267-6897.

**Internet Address:** <http://www.dnr.state.wi.us>

**Fax:** (608) 267-3579.

*Administration and Technology, Division of:* FRANCIS M. FENNESSY, *administrator*, 264-6133.

*Administrative and Field Services, Bureau of:* MARTIN M. HENERT, *director*, 266-9980.

*Enterprise Information Technology and Applications, Bureau of:* SHARON MICHEL, *director*, 266-7547.

*Finance, Bureau of:* HERB M. ZIMMERMAN, *director*, 266-0062.

*Human Resources, Bureau of:* DEBRA K. MARTINELLI, *director*, 266-2048.



*Air and Waste, Division of:* JAY HOCHMUTH, *administrator*, 267-9521; MARY JO KOPECKY, *deputy administrator*, 261-8448.

*Air Management, Bureau of:* vacancy.

*Remediation and Redevelopment, Bureau of:* MARK F. GIESFELDT, *director*, 267-7562.

*Waste Management, Bureau of:* PAUL P. DIDIER, *director*, 267-6854.

*Customer Assistance and External Relations, Division of:* CRAIG L. KARR, *administrator*, 266-5896.

*Communication and Education, Bureau of:* LAUREL J. STEFFES, *director*, 266-8109.

*Community Financial Assistance, Bureau of:* KATHRYN A. CURTNER, *director*, 266-0860.

*Cooperative Environmental Assistance, Bureau of:* LYNDA M. WIESE, *director*, 267-3125.

*Customer Service and Licensing, Bureau of:* MARILYN A. DAVIS, *director*, 267-7799.

*Enforcement and Science, Division of:* DAVID J. MEIER, *administrator*, 266-0015.

*Integrated Science Services, Bureau of:* JAMES T. ADDIS, *director*, 266-0837.

*Law Enforcement, Bureau of:* THOMAS L. HARELSON, *director*, 266-1115.

*Land, Division of:* STEVE W. MILLER, *administrator*, 266-5782.

*Endangered Resources, Bureau of:* CHARLES M. PILS, *director*, 266-2625.

*Facilities and Lands, Bureau of:* ROBERT W. RODEN, *director*, 266-2197.

*Forestry, Bureau of:* CHARLES E. HIGGS, *director*, 266-0842.

*Parks and Recreation, Bureau of:* DAVID L. WEIZENICKER, *director*, 266-2185.

*Wildlife Management, Bureau of:* THOMAS M. HAUGE, *director*, 266-2193.

*Water, Division of:* SUSAN L. SYLVESTER, *administrator*, 266-1099; BRUCE J. BAKER, *deputy administrator*, 266-1902.

*Drinking Water and Groundwater, Bureau of:* ROBERT M. KRILL, *director*, 267-7651.

*Fisheries Management and Habitat Protection, Bureau of:* MICHAEL D. STAGGS, *director*, 267-0796.

*Watershed Management, Bureau of:* vacancy, *director*, 266-0836.

*Field Regions:*

*Northeast:* WILLIAM SELBIG, *director*, (414) 492-5815, 1125 North Military Avenue, P.O. Box 10448, Green Bay 54307-0448.

*Northern:* WILLIAM SMITH, *director*, (715) 635-4010, Highway 70 West, P.O. Box 309, Spooner 54801; Co-regional office: (715) 369-8901, 107 Sutliff Avenue, P.O. Box 818, Rhineland 54501.

*South Central:* RUTHE BADGER, *director*, (608) 275-3260, 3911 Fish Hatchery Road, Fitchburg 53711.

*Southeast:* GLORIA L. McCUTCHEON, *director*, (414) 263-8510, 2300 North Dr. Martin Luther King Jr. Drive, P.O. Box 12436, Milwaukee 53212.

*West Central:* SCOTT HUMRICKHOUSE, *director*, (715) 839-3712, 404 South Barstow Street, P.O. Box 4001, Eau Claire 54702-4001.

**Publications:** *Wisconsin Natural Resources* (bimonthly magazine by subscription – call (608) 267-7410 or (800) 678-9472); *Wisconsin State Parks – Explore and Enjoy*; parks newspapers and visitor guides; hunting, fishing, trapping, snowmobiling, ATV and boating regulations; various brochures, fact sheets and reports (lists available). Teachers may write to the Bureau of Communication and Education for a list of publications.

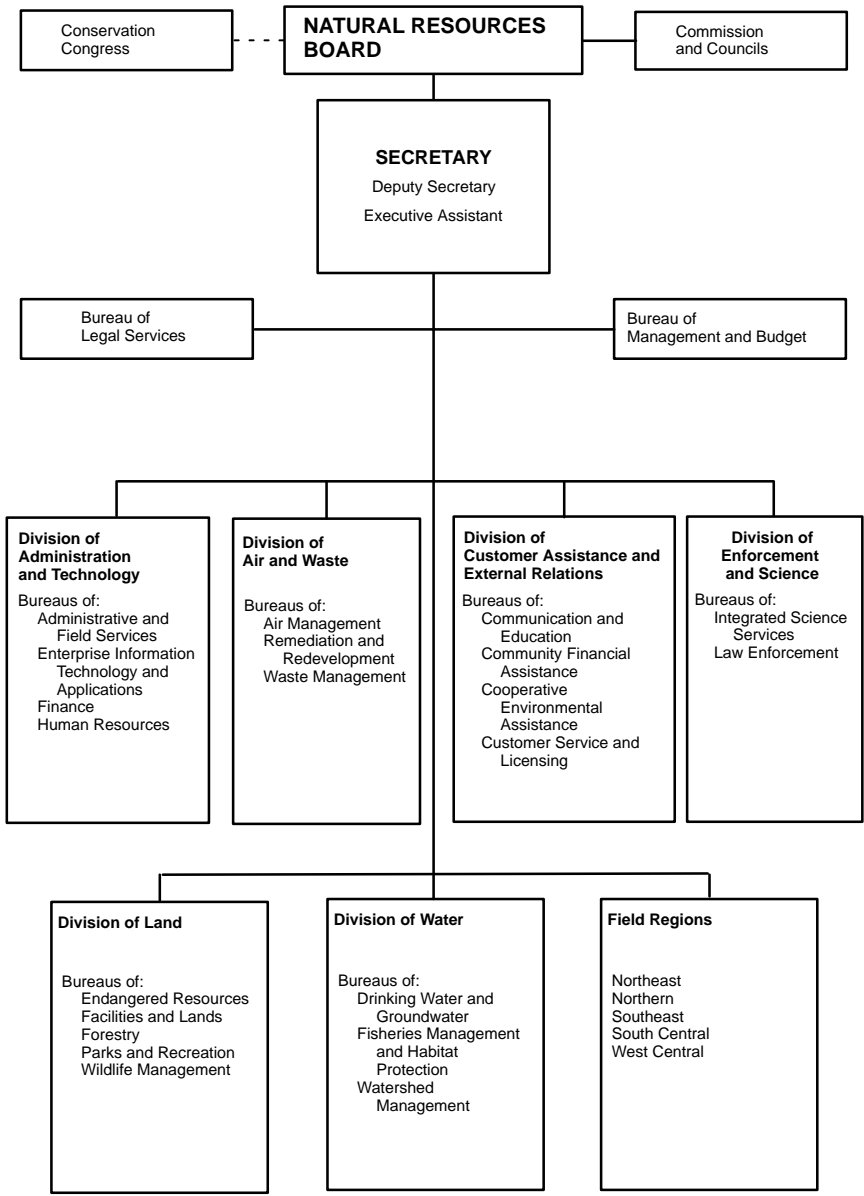
**Number of Employees:** 2,899.72.

**Total Budget 1995-96:** \$415,699,800.

**Total Budget 1996-97:** \$412,175,600.

**Statutory References:** Sections 15.05 (1) (c) and 15.34; Chapters 23, 26-33, 87, 88 and 160.

DEPARTMENT OF NATURAL RESOURCES



Units attached for administrative purposes under Sec. 15.03:

- Groundwater Coordinating Council
- Lake Michigan Commercial Fishing Board
- Lake Superior Commercial Fishing Board
- Public Intervenor Board
- Council on Recycling
- Wisconsin Waterways Commission



**Agency Responsibility:** The Department of Natural Resources (DNR) is responsible for implementing state and federal laws that protect and enhance Wisconsin's natural resources, including its air, land, water, forests, wildlife, fish and plants. It coordinates the many state-administered programs that protect the environment and provides a full range of outdoor recreational opportunities for Wisconsin residents and visitors.

**Organization:** The 7 members of the Natural Resources Board serve staggered 6-year terms. At least 3 of them must be from the northern part of the state and at least 3 from the southern part. Restrictions are placed on board members regarding their holding DNR permits or depending on permit holders for a significant portion of their income. The board advises the department and offers a formal point of contact for citizens to express their views.

The department is administered by a secretary appointed by the governor with the advice and consent of the senate. The department's division administrators and regional directors are appointed from outside the classified service by the secretary. The regional directors manage all of the agency's field operations for their respective areas and report directly to the departmental secretary.

**Unit Functions:** The *Division of Administration and Technology* provides a variety of management services for the department, including budgetary and finance services, personnel and human resource management, computer and information technology support, affirmative action, employe assistance, and telecommunication and transportation services.

The *Division of Air and Waste* protects the state's air quality and general environmental health through air pollution control and solid and hazardous waste management in cooperation with the federal Environmental Protection Agency, international agencies, local governments, private industry and citizens. It develops air quality implementation plans, monitors air quality, conducts inspections, operates a permit program and initiates compliance actions in accordance with state and federal requirements. The division's waste management program oversees plan review, licensing, inspection and compliance actions relating to the generation, transportation, treatment, storage, reuse and disposal of solid and hazardous waste materials. It reviews and approves local recycling programs and provides technical and marketing assistance and public outreach in support of recycling efforts. The division is responsible for the cleanup of contaminated sites that fall under the following legislation: the hazardous substances spills law, the environmental repair law, the abandoned container law, the federal Superfund law, the state land recycling law and the Resource Conservation and Recovery Act. It also enforces laws relating to metallic and nonmetallic mining.

The *Division of Customer Assistance and External Relations* provides a variety of customer services including the sale of hunting, fishing and boat licenses, environmental education programs, public information and expertise for businesses regarding pollution prevention. It oversees the administration and distribution of aids for environmental programs that benefit local governments, such as the Clean Water Fund, and acts as liaison to federal, state and tribal agencies and the Conservation Congress. The division handles the public intervenor function to protect public rights in water and other natural resources.

The *Division of Enforcement and Science* is responsible for enforcing the state's conservation, hunting, fishing, environmental and safety laws and for conducting research on natural resource issues. Its game wardens and environmental staff promote compliance with the law through educational outreach programs, such as classes in hunting, boating, snowmobile and all-terrain vehicle safety. The division reviews major public and private proposals under the federal and state Environmental Policy Acts, manages laboratories and contracts with analytical facilities to achieve quality assurance. The division also conducts biological and social science research, and it provides expertise to assist other divisions and guide the department in policy formation.

The *Division of Land* has major responsibility for protecting, managing and conserving the state's wildlife, forests, rare and endangered species, and outdoor recreational resources. It manages wildlife and habitats on about 1.4 million acres of state-owned or leased land to encourage biological diversity and provide for recreational uses, such as hunting and wildlife viewing. The division operates educational programs promoting the appreciation of wildlife and natural ecosystems. Wildlife managers help private landowners manage their lands for the benefit of wildlife by encouraging such activities as planting shelter belts and restoring wetlands. The endan-



gered resources program works to restore and maintain the endangered populations of Wisconsin's native plant and animal species, supported in part by funds derived from voluntary contributions designated by taxpayers on their state income tax returns. The division manages the state's forests to provide economic, ecological, social and cultural benefits. Foresters assist private woodlot owners, offer expertise in urban forestry and work in partnership with county foresters, the timber industry and environmental groups. A fire management program provides training for state foresters and works with local fire departments to prevent and control forest fires. Parks personnel manage the state parks and trails systems for outdoor recreational use and the conservation of natural resources. The division is also responsible for property acquisition and facilities construction, and it coordinates implementation of the Stewardship Program, which provides grants for the purchase of lands for natural and recreational areas, wildlife habitats, urban green spaces, local parks, trails and riverways.

The *Division of Water* protects, maintains and improves the quality of Wisconsin's groundwater, surface water and aquatic ecosystems. Using river basins and watersheds as the basic management units, the division's interdisciplinary teams work to prevent or regulate water pollution from industries, municipal sewage treatment facilities, construction sites, farms and urban areas. It monitors compliance with water quality standards in order to ensure clean lakes, rivers and streams suitable for recreational uses and adequate supplies of safe drinking water. It regulates sport and commercial fishing through licensing, fish hatchery services, fish stocking, aquatic habitat improvement and public waterfront access programs. The division oversees design and maintenance of dams and other structures in state waters, plans and supervises wetland and shoreland zoning and floodplain regulation, and helps local government units protect lives and property through floodplain management and dam safety inspections.

The *Field Regions* enable the department to make its programs accessible to the general public. Each of the 5 regions is divided into 4 to 6 geographic management units whose boundaries are principally based on major river basins. Most DNR field staff work within these units, although some, such as conservation wardens, are assigned to counties within units. This structure combines employees with different types of expertise into interdisciplinary teams responsible for assessing natural resource and environmental needs from a broader perspective.

**History:** Today, the Department of Natural Resources has dual responsibility for traditional conservation duties and environmental protection. Its history and structure reflect more than a century of government and citizen involvement with these concerns. Wisconsin's earliest conservation legislation focused on fish, game and forests. Chapter 253, Laws of 1874, created a Board of Fish Commissioners charged with hatching fish eggs received from the federal government and distributing the fry to Wisconsin waters. The governor was authorized in 1885 by Chapter 455 to appoint 3 fish wardens to enforce fishing regulations and collect statistics from commercial fishermen. Chapter 456, Laws of 1887, directed the governor to appoint 4 game wardens to enforce all laws protecting fish and game.

Chapter 229, Laws of 1897, established a 3-member commission to develop legislation creating a forestry department. The commission was directed to devise ways to use the state's forest resources without harming the climate or water supplies and to preserve forest resources without retarding the state's economic development. The report of this commission led to Chapter 450, Laws of 1903, which established a Department of State Forestry with a superintendent appointed by the Board of State Forest Commissioners. Chapter 495, Laws of 1907, created a State Park Board with authority to acquire and manage land for park purposes.

Chapter 406, Laws of 1915, consolidated all park and conservation functions under a 3-member Conservation Commission of Wisconsin, appointed by the governor with senate approval. Except for the period 1923 to 1927, when a single full-time commissioner, created by Chapter 118, Laws of 1923, headed the Department of Conservation, a part-time commission or board has directed the management and conservation of Wisconsin's natural resources since 1915. With the enactment of 1995 Wisconsin Act 27, which provided that the secretary would be appointed by the governor with senate consent rather than appointed by the board, the current board's role has become an advisory one.

The 1960s saw major changes in conservation legislation. Chapter 427, Laws of 1961, created a committee charged with developing a long-range plan for acquiring and improving outdoor



recreation areas. It initiated the Outdoor Recreation Act Program (ORAP) to fund land acquisitions. In 1969, Chapter 353 expanded ORAP and authorized the state to incur debt up to \$56 million between 1969 and 1981 for the purpose of providing outdoor recreation opportunities.

Wisconsin's antipollution efforts date back to Chapter 412, Laws of 1911, when the legislature gave the State Board of Health investigative powers in water pollution cases. Prior to that, such investigations were primarily the responsibility of local government. In 1927 (Chapter 264), the legislature created a committee to supervise the water pollution control activities carried out by several state agencies, including the Conservation Commission. The Department of Resource Development, which had been created by Chapter 442, Laws of 1959, assumed water pollution control duties in 1965 (Chapter 614) and statewide air pollution regulation with Chapter 83, Laws of 1967.

In the 1967 executive branch reorganization, the legislature created the Department of Natural Resources by combining the Department of Conservation and the Department of Resource Development. The new department was given authority to regulate air and water quality, as well as solid waste disposal, and directed to develop an integrated program to protect air, land and water resources.

Chapter 274, Laws of 1971, required all state agencies to report on the environmental impacts of proposed actions that could significantly affect environmental quality. Chapter 275, Laws of 1971, provided for state protection of endangered fish and wildlife, and Chapter 370, Laws of 1977, placed nongame species and endangered wild plants under state protection. A program protecting surface waters from nonpoint source pollution was created by Chapter 418, Laws of 1977, and a groundwater protection program based on numerical standards for polluting substances was created by 1983 Wisconsin Act 410.

With enactment of 1989 Wisconsin Act 31, the legislature created the Stewardship Program, which authorized up to \$250 million in state debt to acquire and develop land for recreational uses, wildlife habitats, fisheries and natural areas. In 1989 Wisconsin Act 335, the legislature made major changes in the laws governing recycling, source reduction and disposal of solid wastes. 1995 Wisconsin Act 27 transferred the public intervenor function to the department from the Department of Justice.

#### **Statutory Commission and Councils**

*Aquatic Nuisance Control Council:* BRUCE BAKER (designated by secretary of natural resources); PATRICIA AHRENS, JOHN W. FORSTER, ALLEN MILLER, WILLIAM NABAK, JAMES PAXTON, ORVAL RAUTMAN, JOHN THIEL, BRIAN TIPPETTS, H. MOWAT WALDREN, JR., vacancy. (All except secretary or designee are appointed by governor.)

The Aquatic Nuisance Control Council, created by 1991 Wisconsin Act 269, advises the legislature, governor and department on the economic and environmental impact of aquatic nuisance species and potential control strategies. The 11-member council includes 10 persons appointed by the governor to serve 3-year terms, and each of them must have a background in conservation, environmental policy or public health. The council's composition and duties are prescribed in Sections 15.347 (18) and 30.1255 of the statutes.

*Fox River Management Commission:* JOHN W. FORSTER, *chairperson*; GARY DRZEWIECKI, WILLIAM J. GLATZ, JOSEPH MAEHL, 3 vacancies (appointed by governor).

The Fox River Management Commission manages and operates the Fox River locks and facilities and contracts with other public agencies for certain services. The 7-member commission was created by 1983 Wisconsin Act 410, and its composition and duties are prescribed in Sections 15.345 (5) and 30.93 of the statutes.

*Inland Lakes Protection and Rehabilitation Council:* Inactive.

The Inland Lakes Protection and Rehabilitation Council, composed of 9 members, advises the department on all matters pertaining to abatement of pollution and the rehabilitation of inland lakes. The council was created by Chapter 301, Laws of 1973, and its composition and duties are prescribed in Sections 15.347 (8) and 33.05 of the statutes.

*Metallic Mining Council:* Inactive.

The Metallic Mining Council advises the department on matters relating to the reclamation of mined land. Its 9 members are appointed for staggered 3-year terms and are expected to represent



*A biologist from the Wisconsin Department of Natural Resources displays an ornate box turtle equipped with a radio transmitter so the movements of this threatened species can be tracked and studied. (Department of Natural Resources)*



a balance of economic, scientific and environmental viewpoints. The council was created by Chapter 377, Laws of 1977, and its composition and duties are prescribed in Sections 15.347 (12) and 144.448 of the statutes.

*Milwaukee River Revitalization Council:* RAY KRUEGER, *chairperson*; KIT SORENSON (designated by secretary of tourism), SHARON GAYAN (designated by secretary of natural resources); GARY A. AHRENS, JOSEPH ALBERT, JOHN BUECHEL, AMY DUNLAP, JAMES HEILIGENSTEIN, PATRICK MARCHESE, GERALD NINEMANN, MARY ANN PETERSON, ALFRED SCHLECHT, ART SMITH. (All except designees are appointed by governor.)

The Milwaukee River Revitalization Council advises the legislature, governor and department on matters related to environmental, recreational and economic revitalization of the Milwaukee River Basin, and it assists local governments in planning and implementing projects. The 13-member council is also responsible for developing and implementing a plan that encourages multiple recreational, entrepreneurial and cultural activities along the streams of the Milwaukee River Basin. Its 11 appointed members serve 3-year terms. Each of the priority watersheds in the basin must be represented by at least one council member. The council was created by 1987 Wisconsin Act 399, and its composition and duties are prescribed in Sections 15.347 (15) and 23.18 of the statutes.

*Natural Areas Preservation Council:* PAUL SAGER (appointed by UW System board of regents), *chairperson*; WILLIAM BROOKS (appointed by council of the Wisconsin Academy of Sciences, Arts and Letters, representing private colleges), *vice chairperson*; CHARLES PILS (appointed by Natural Resources Board), *secretary*; ROBERT RODEN (appointed by Natural Resources Board); JACK FINGER (appointed by superintendent of public instruction); ALLEN HANEY, RONALD HENNING, VIRGINIA KLINE (appointed by UW System board of regents); PATRICIA BLANKENBURG, EVELYN HOWELL (appointed by council of the Wisconsin Academy of Sciences, Arts and Letters); SUSAN SULLIVAN BORKIN (appointed by Milwaukee Public Museum board of directors).

The Natural Areas Preservation Council advises the department on matters pertaining to the protection of natural areas that contain native biotic communities and habitats for rare species. It also makes recommendations about gifts or purchases for the state natural areas system. The 11-member council was created by Chapter 566, Laws of 1951, as the State Board for Preservation of Scientific Areas. It was renamed the Scientific Areas Preservation Council in Chapter 327, Laws of 1961, and given its current name in 1985 Wisconsin Act 29. Its composition and duties are prescribed in Sections 15.347 (4) and 23.26 of the statutes.

*Nonmetallic Mining Council:* W. PERRY HALQUIST (nonmetallic mineral extraction business); SUSAN COURTER (business using nonmetallic minerals); JAMES F. BURGNER (county zoning administrator); MICHAEL G. ERICKSON, RONALD L. GARRISON, CHRISTOPHER R. LARSON, MARTIN T. LEHMAN, ELMER W. SHIELDS, JR., EDWARD TROXELL (appointed by governor).

The Nonmetallic Mining Council advises the department on issues relating to the mining of mineral aggregates or nonmetallic minerals, such as stone, sand, gravel, asbestos, beryl, clay, feldspar, peat, talc and topsoil. Its 9 members, who are appointed for 3-year terms, must represent economic, scientific and environmental viewpoints. The council was created by 1993 Wisconsin Act 464. Its duties and composition are prescribed in Sections 15.09 (5) and 15.347 (19) of the statutes.

*Off-the-Road Vehicle Council:* MICHAEL F. SOHASKY, *chairperson*; PETER DURAND, RUSSELL HERMSEN, RICHARD HUTCHINSON, ROB MCCONNELL, LARRY STRANGFELD, DAVE TRACZYK (appointed by Natural Resources Board).

The Off-the-Road Vehicle Council conducts studies and makes recommendations to the department regarding the recreational aid program for off-the-road Type I motorcycles and all-terrain vehicles. The council's 7 members are appointed for staggered 3-year terms, and they must be knowledgeable about the sporting and recreational needs of the drivers of these types of vehicles. The council was created by Chapter 29, Laws of 1977, as the Motorcycle Recreation Council and given its current name and broader duties in 1985 Wisconsin Act 29. Its composition and duties are prescribed in Sections 15.347 (11) and 23.09 (25) of the statutes.



*Snowmobile Recreational Council:* JAMES SAARI (northern member), *chairperson*; DONALD RUEHLOW (southern member), *vice chairperson*; BEVERLY DITTMAR, HAROLD H. FLATER, JOSEPH KAPUSTA, EARL ORNER, KATHLEEN RASMUSSEN, JAMES TOFTNESS, DIRK VAN DUZEE (northern members); CHARLES BENA, MICHAEL CERNY, JAMES CRAVEN, MARK LARSEN, WILLIAM PFAFF, DONNA WHITE (southern members). (All are appointed by governor with senate consent.)

The Snowmobile Recreational Council carries out studies and makes recommendations to the governor, the legislature and the Departments of Natural Resources and Transportation regarding all matters affecting snowmobiling. The 15 members of the council are appointed for staggered 3-year terms, and at least 5 must represent the northern part of the state and another 5 must represent the southern part. The council was created by Chapter 277, Laws of 1971, and its composition and duties are prescribed in Sections 15.347 (7) and 350.14 of the statutes.

*State Trails Council:* HARVEY BRANDAU, JEFFREY L. BUTSON, THOMAS HUBER, JOANNE JONES, CONNIE LODEN, JAMES SAARI, MICHAEL F. SOHASKY, KENNETH WENDT, vacancy (appointed by governor).

The State Trails Council advises the department about the planning, acquisition, development and management of state trails. Its 9 members are appointed for 4-year terms. It was created by 1989 Wisconsin Act 31, and its composition and duties are prescribed in Sections 15.347 (16) and 23.175 (2) (c) of the statutes.

#### **Independent Organization — Conservation Congress**

*Conservation Congress Executive Council:* ROBERT ELLINGSON (District 10), *chairperson*; EDGAR HARVEY, JR. (District 8), *vice chairperson*; STEVE OESTREICHER (District 3), *secretary-treasurer*; RUEL FLEMING, PAUL GULAN (District 1); GARY GAIER, MICHAEL REITER (District 2); AL OPALL (District 3); TONY JANECEK, RUSSELL MALLOW (District 4); RUSSELL HITZ, MARK NOLL (District 5); WILLIAM BUCKLEY, MERLIN LINDOW (District 6); RICHARD CHIER, DICK KOERNER (District 7); MICHAEL BRUST (District 8); DAVID LADD, FRANCIS MURPHY (District 9); KENNETH RISLEY (District 10); JAMES BUTTERBRODT, HAROLD ERICKSON (District 11); THEODORE LIND, DON SLOMSKI (District 12).

The Conservation Congress is a private citizens group, and its executive council advises the Natural Resources Board on all matters under the board's jurisdiction. The Conservation Congress is organized into 12 districts statewide. Each district elects 2 members to one-year terms on the executive council. The congress originated in 1934 and received statutory recognition in Chapter 179, Laws of 1971. Its duties are prescribed in Section 15.348 of the statutes.

#### **INDEPENDENT UNITS ATTACHED FOR BUDGETING, PROGRAM COORDINATION AND RELATED MANAGEMENT FUNCTIONS BY SECTION 15.03 OF THE STATUTES**

##### **GROUNDWATER COORDINATING COUNCIL**

*Groundwater Coordinating Council:* NICHOLAS J. NEHER (designated by secretary of agriculture, trade and consumer protection), HENRY ANDERSON (designated by secretary of health and family services), JOHN ALBERTS (designated by secretary of commerce), SUSAN SYLVESTER (designated by secretary of natural resources), JAMES ROBERTSON (state geologist), CAROL CUTSHALL (designated by secretary of transportation), ALBERT J. BEAVER (designated by president, UW System), JOHN A. METCALF (representing governor).

**Statutory References:** Sections 15.347 (13) and 160.50.

**Agency Responsibility:** The Groundwater Coordinating Council is composed of 8 members who serve 4-year terms. Persons designated to serve on behalf of their agency heads must be agency employees with "sufficient authority to deploy agency resources and directly influence agency decision making." It was created by 1983 Wisconsin Act 410 to advise state agencies on the coordination of nonregulatory programs related to groundwater management. Member agencies exchange information regarding groundwater monitoring, budgets for groundwater programs, data management, public information efforts, laboratory analyses, research and state appropriations for research. The council reports annually to the legislature, governor and agencies represented regarding the council's activities and recommendations and its assessment of the current state of groundwater resources and related management programs.



### LAKE MICHIGAN COMMERCIAL FISHING BOARD

*Lake Michigan Commercial Fishing Board:* CHARLES HENRIKSEN, RICHARD R. JOHNSON, MICHAEL LECLAIR, MARK MARICQUE, NEIL A. SCHWARZ (licensed, active commercial fishers); DEAN SWEAR (licensed, active wholesale fish dealer); vacancy (state citizen). (All are appointed by governor.)

**Statutory References:** Sections 15.345 (3) and 29.33 (7).

**Agency Responsibility:** The Lake Michigan Commercial Fishing Board was created by Chapter 418, Laws of 1977. Its 7 members must live in counties contiguous to Lake Michigan, and they serve indefinite terms at the governor's pleasure. The 5 commercial fishers must represent fisheries in specific geographic areas. The board reviews applications for transfers of commercial fishing licenses between individuals, establishes criteria for allotting catch quotas to individual licensees, assigns catch quotas when the department establishes special harvest limits and assists the department in establishing criteria for identifying inactive license holders.

### LAKE SUPERIOR COMMERCIAL FISHING BOARD

*Lake Superior Commercial Fishing Board:* MAURINE HALVOVSEN, 2 vacancies (licensed, active commercial fishers); JEFF BODIN (licensed, active wholesale fish dealer); BILL DAMBERG (state citizen). (All are appointed by governor.)

**Statutory References:** Sections 15.345 (2) and 29.33 (7).

**Agency Responsibility:** The Lake Superior Commercial Fishing Board was created by Chapter 418, Laws of 1977. Its 5 members must live in counties contiguous to Lake Superior, and they serve indefinite terms at the governor's pleasure. The board reviews applications for transfers of commercial fishing licenses between individuals, establishes criteria for allotting catch quotas to individual licensees, assigns catch quotas when the department establishes special harvest limits and assists the department in establishing criteria for identifying inactive license holders.

### PUBLIC INTERVENOR BOARD

*Public Intervenor Board:* LOUIS ANDREW, JR. (appointed by governor), *chairperson*; THOM CISKE (appointed by senate majority leader), *vice chairperson*; DON MILLIS (appointed by assembly majority leader), *secretary*; EMILY EARLEY (appointed by senate minority leader); TOM HEBL (appointed by assembly minority leader); MARK MUSOLF, GERALD O'BRIEN (appointed by governor with senate consent); JOHN ROSE (appointed by governor).

*Administrator:* EDWINA KAVANAUGH, *public intervenor*, (608) 264-9237; Fax: (608) 266-6983.

**Mailing Address:** P.O. Box 7921, Madison 53707-7921.

**Location:** Department of Natural Resources, 101 South Webster Street, Madison.

**Statutory References:** Sections 15.07 (1) (cm), 15.345 (4), 23.39 and 227.485 (2) (e).

**Agency Responsibility:** The Public Intervenor Board provides direction to the public intervenor regarding protection of public rights in water and other natural resources. It must give its approval before the public intervenor formally intervenes in any administrative proceedings before any state agency, including the Department of Natural Resources.

The 8 board members serve 4-year terms and must have backgrounds in or demonstrated experience with environmental protection or other natural resource conservation. The board was created by 1995 Wisconsin Act 27, and it continues many of the duties formerly performed by the discontinued Public Intervenor Advisory Committee in the Department of Justice.

### COUNCIL ON RECYCLING

*Council on Recycling:* JACQUELINE MOORE BOWLES, REUBEN DAMM, CAROL KUBLY, DANIEL MEYER, CATHERINE ONSAGER, ROBERT REICHEL, JOHN REINDL (appointed by governor).

**Statutory References:** Sections 15.347 (17) and 159.22.

**Agency Responsibility:** The Council on Recycling, created by 1989 Wisconsin Act 335, consists of 7 members appointed to 4-year terms coinciding with that of the governor. The council



promotes implementation of the state's solid waste reduction, recovery and recycling programs; helps public agencies coordinate programs and exchange information; advises state agencies about creating administrative rules and establishing priorities for market development; and advises the DNR and the UW System about education and research related to solid waste recycling. The council also promotes a regional and interstate marketing system for recycled materials and reports to the legislature about market development and research to encourage recycling. The council works with the packaging industry on standards for recyclable packaging, advises the department about statewide public information activities, and advises the governor and the legislature.

### WISCONSIN WATERWAYS COMMISSION

*Wisconsin Waterways Commission:* JAMES F. ROONEY (Lake Michigan area), *chairperson*; MICHAEL J. CASTLE (Lake Winnebago watershed), *vacancy* (Lake Superior area), J. FREDERIC RUF (inland area), PATRICK T. ZIELKE (Mississippi River area). (All are appointed by governor with senate consent.)

**Mailing Address:** P.O. Box 7927, Madison 53707.

**Location:** State Natural Resources Building (GEF 2), 101 South Webster Street, Madison.

**Telephone:** (608) 266-5897.

**Statutory References:** Sections 15.345 (1) and 30.92.

**Agency Responsibility:** The Wisconsin Waterways Commission was created by Chapter 274, Laws of 1977. Its 5 members serve staggered 5-year terms. Each must represent a specific geographic area and be knowledgeable about that area's recreational water use problems. The commission may have studies conducted to determine the need for recreational boating facilities; approve financial aid to local governments for development of recreational boating projects, including the acquisition of weed harvesters; and recommend administrative rules for the recreational facilities boating program.

---

### PERSONNEL COMMISSION

*Personnel Commission:* LAURIE R. MCCALLUM, *chairperson*; JUDY M. ROGERS, DONALD R. MURPHY (appointed by governor with senate consent).

*General Counsel:* ANTHONY J. THEODORE.

**Mailing Address:** 131 West Wilson Street, Room 1004, Madison 53703.

**Telephone:** (608) 266-1995.

**Publications:** Biennial Report; Digest of Decisions.

**Number of Employees:** 10.00.

**Total Budget 1995-96:** \$721,000.

**Total Budget 1996-97:** \$721,000.

**Statutory References:** Sections 15.06 (1) (d), 15.80, 103.10 (12), 230.44 and 230.45.

**Agency Responsibility:** The Personnel Commission is a quasi-judicial, independent agency that deals exclusively with state employment issues. It hears appeals concerning hazardous employment injury benefits; certain kinds of noncontractual grievances; classification, examination, and appointment transactions; and disciplinary actions involving unrepresented employees in the classified civil service. It also processes complaints alleging that a state agency, in its capacity as an employer, has violated state laws related to fair employment policies, family or medical leave, safety and health, or "whistleblower" or elder abuse reporting.

Because the commission's jurisdiction overlaps that of the U.S. Equal Employment Opportunities Commission in certain areas, some complaints may be filed with both agencies. Generally, the agency that first receives a complaint processes it, while the other agency defers action and adopts the first agency's determination.



**Organization:** The 3 commission members serve staggered 5-year terms. All must be U.S. citizens and state residents for at least 3 years and must have professional experience in personnel or labor relations. No member may hold any other position in state employment, and restrictions are placed on current and prior political activity. No more than 2 commissioners may be members of the same political party. At least one commissioner must be a licensed attorney.

**History:** The Personnel Commission was created by Chapter 196, Laws of 1977, to assume the quasi-judicial functions formerly performed by the state Personnel Board and the Department of Industry, Labor and Human Relations.

---

### Office of the STATE PUBLIC DEFENDER

*Public Defender Board:* DANIEL M. BERKOS (State Bar member), *chairperson*; JAMES T. ROGERS (State Bar member), *vice chairperson*; HARRY HERTEL, JOHN HOGAN, MARC T. MCCRORY, CHRISTINE M. WISEMAN (State Bar members); DAGOBERTO IBARRA, DONALD WALSH, STELLA A. YOUNG (public members). (All are appointed by governor with senate consent.)

**State Public Defender:** NICHOLAS L. CHIARKAS, 266-0087.

*Deputy State Public Defender:* FREDERICK H. MILLER, 266-9449.

*Legal Counsel:* SALLY MAYNE PEDERSON, 264-8560.

*Administrative Division:* ARLENE F. BANOUL, *director*, 266-9447.

*Appellate Division:* MARLA J. STEPHENS, *director*, 267-0311.

*Assigned Counsel Division:* MARCUS T. JOHNSON, *director*, 266-5480.

*Trial Division:* MICHAEL TOBIN, *director*, 266-0087.

**Mailing Address:** P.O. Box 7923, Madison 53707-7923.

**Location:** 315 North Henry Street, 2nd Floor, Madison.

**Telephone:** (608) 266-0087.

**Fax:** (608) 267-0584.

**Number of Employees:** 533.60.

**Total Budget 1995-96:** \$64,372,500.

**Total Budget 1996-97:** \$58,613,200.

**Statutory References:** Section 15.78; Chapter 977.

**Agency Responsibility:** The Office of the State Public Defender makes determinations of indigency and handles the legal representation of specified defendants who are unable to afford a private attorney. The Public Defender Board promulgates rules for determining the indigency of persons entitled to representation and for certifying attorneys who can be assigned as counsel.

**Organization:** The Public Defender Board consists of 9 members appointed for staggered 3-year terms. At least 5 members must be members of the State Bar of Wisconsin. A member may not be a judicial or law enforcement officer, a district attorney, a corporation counsel, or the state public defender or be employed by one of those officers. The state public defender, who is appointed by the board and serves at its pleasure, supervises administration of the office and assigns attorneys to represent persons entitled to counsel.

**Unit Functions:** The *Administrative Division* provides purchasing and personnel services, budget preparation, case management and fiscal analysis. It also processes payments for private counsel who assist the agency.

The *Appellate Division* uses both program staff and private attorneys to provide appellate assistance to indigents in all counties. It represents indigents involved in post-conviction or post-commitment proceedings in certain state and federal courts. It also receives and acts upon complaints from inmates or courts relating to persons confined to state correctional and mental health institutions.

The *Assigned Counsel Division* oversees certification and appointment of private attorneys to represent indigent clients in cases not handled by staff.



The *Trial Division* provides legal representation at the trial level to indigent persons who have been charged with adult felony crimes or misdemeanors punishable by imprisonment. It also represents minors charged with juvenile offenses, persons petitioned mentally ill or individuals involved in family disputes, including paternity actions and termination of parental rights.

**History:** The position of state public defender was created in 1966 by Chapter 479, Laws of 1965, under the supervision of the Wisconsin Supreme Court and funded, in part, by a private grant from the Ford Foundation. Its mission was to pursue post-conviction appeals for indigents before the appropriate court, including the U.S. Supreme Court. The duties of the office were originally confined to appellate defense. Indigent defense at the trial court level remained a county responsibility, dependent upon court-appointed private counsel paid by the county or privately funded public defender services.

Chapter 29, Laws of 1977, transferred the state public defender from the judicial branch to the executive branch as an independent agency under the Public Defender Board, which appointed the state public defender to a 5-year renewable term with removal only for cause. The 1977 law also authorized gradual implementation of a trial-level program. Although Chapter 34, Laws of 1979, provided state funding for provision of staff services within the Office of the State Public Defender to cover trial and appellate representation, the 1980-81 funding was vetoed and only partially restored.

Chapter 356, Laws of 1979, established the proportion of each county's indigent cases to be handled by public and private counsel, required a Legislative Council study of the public defender program, and set November 15, 1985, as the program's sunset date. 1985 Wisconsin Act 29 repealed the sunset provision and expanded coverage of indigent cases by public defender staff from 47 counties to the entire state.

1995 Wisconsin Act 27 required the state public defender to establish a fee schedule; limited the number of public defender cases that may be assigned to private counsel to no more than one-third of all cases; and eliminated public defender representation in some cases, including certain matters related to prison and jail conditions, sentence modifications, probation and parole revocations, child support, and parents of children in need of protection and services (CHIPS).

---

## Department of PUBLIC INSTRUCTION

**State Superintendent:** JOHN T. BENSON, 266-1771.

*Deputy State Superintendent:* STEVEN B. DOLD, 266-1771.

*Executive Assistant to State Superintendent:* vacancy.

*Special Assistant to State Superintendent:* PATRICIA C. YATES, 267-9294.

*Educational Accountability, Office of:* B. DARWIN KAUFMAN, *director*, 267-9111.

*Legal Services, Office of:* ROBERT J. PAUL, *chief legal counsel*, 266-9353.

**Mailing Address:** P.O. Box 7841, Madison 53707-7841.

**Location:** State Education Building (GEF 3), 125 South Webster Street, Madison.

**Telephones:** (608) 266-3390; TTY: (608) 267-2427.

**Fax:** (608) 267-1052.

**Internet Address:** <http://www.state.wi.us.agencies/dpi>

Address e-mail by combining the user ID and the state extender: <a href="mailto:userid@mail.state.wi.us">userid@mail.state.wi.us</a>
--

*Finance and Management, Division for:* FAYE J. STARK, *assistant superintendent*, 266-2804.

*Food and Nutrition Services:* RICHARD A. MORTENSEN, *director*, 266-3509.

*Management Services:* VANCE RAYBURN, *director*, 266-3320.

*Policy and Budget/Human Resources:* vacancy, *director*, 266-1966.

*School Consultative Services:* SALLY K. SARNSTROM, *director*, 266-7475.

*School Financial Services:* JAMES MCINTOSH, *director*, 266-6968.



*Learning Support: Equity and Advocacy, Division for:* JUANITA S. PAWLISCH, *assistant superintendent*, 266-1649, Fax: (608) 267-3746, TTY: (608) 267-2427, pawlijs@

*Equity and Title I:* WILLIAM J. ERPENBACH, *director*, 267-1072, Fax: (608) 267-0364, erpenwj@

*Exceptional Education:* PAUL T. HALVERSON, *director*, 266-1781, halvept@

*Student Services, Prevention and Wellness:* NANCY F. HOLLOWAY, *director*, 266-8960, Fax: (608) 267-3746, hollonf@

*Residential Schools:* ALAN L. BEELER, *director*, 309 West Walworth Avenue, Delavan 53115-1099, (414) 728-7146, Fax: (414) 728-7160.

*Wisconsin School for the Deaf and Educational Services Center for the Hearing Impaired:* ALEX SLAPPEY, *superintendent*, 309 West Walworth Avenue, Delavan 53115-1099, (414) 728-7120, Fax: (414) 728-7160.

*Wisconsin School for the Visually Handicapped and Educational Services Center for the Visually Impaired:* WILLIAM KOEHLER, *superintendent*, 1700 West State Street, Janesville 53546-5399, (608) 758-6127, (800) 832-9784, Fax: (608) 758-6100.

*Learning Support: Instructional Services, Division for:* PAULINE M. NIKOLAY, *assistant superintendent*, 266-3361.

*Content and Learning:* THOMAS J. STEFONEK, *director*, 266-5728.

*School Improvement:* SUSAN GRADY, *director*, 266-2364.

*School-to-Work:* BRYAN ALBRECHT, *director*, 267-9251.

*Teacher Education and Licensing:* PETER J. BURKE, *director*, 266-1879.

*Wisconsin Educational Opportunities Program and Urban Education:* PAUL T. SPRAGGINS, JR., *director*, 266-3523; Milwaukee (414) 227-4466.

*Libraries and Community Learning, Division for:* CAROLYN W. FOLKE, *interim assistant superintendent*, 266-2205.

Division Internet Address: <http://www.state.wi.us/agencies/dpi/dlcl/>

*Bright Beginnings/Family-School-Community Involvement:* JANE L. GRINDE, *director*, 266-9356, grindjl@

*Education Information Services:* GREG DOYLE, *director*, 266-1098, doylegm@

*Information Management and Instructional Technology:* CAROLYN W. FOLKE, *director*, 266-7049, folkecw@

*Public Library Development:* LARRY T. NIX, *director*, 266-7270.

*Resource Sharing:* SALLY J. DREW, *director*, (608) 224-6161, drewsj@

**Publications:** Biennial Report; *Channel DLS* (Division for Libraries and Community Learning); Directory of Wisconsin Public/Private Schools; various curriculum publications and research studies.

**Number of Employees:** 616.05.

**Total Budget 1995-96:** \$3,094,642,400.

**Total Budget 1996-97:** \$3,968,757,200.

**Constitutional Reference:** Article X, Section 1.

**Statutory References:** Section 15.37; Chapters 115 and 118.

**Agency Responsibility:** The Department of Public Instruction is charged with providing direction and technical assistance for public elementary and secondary education in Wisconsin. It offers a broad range of programs and professional services to local school administrators and faculty. The department distributes state school aids and administers federal aids to supplement local tax resources, improve curriculum and school operations, ensure education for children with disabilities, offer professional guidance and counseling, and develop school and public library resources.

**Organization:** The department is headed by the State Superintendent of Public Instruction, a constitutional officer who is elected on the nonpartisan spring ballot for a term of 4 years. The

state superintendent appoints a deputy state superintendent and assistant state superintendents from outside the classified service. The assistant superintendents are responsible for administering the operating divisions of the department. The superintendent also appoints the director of the Office of Educational Accountability, which was created in Section 15.374 (1), Wisconsin Statutes, by 1993 Wisconsin Act 16.

**Unit Functions:** The *Division for Finance and Management* distributes state and federal school aids and grants; administers school district revenue limits; monitors the Milwaukee Parental Choice Program; prescribes school financial accounting methods; consults with school districts on their budgets; and collects, analyzes and publishes school finance data. Consulting services are provided to assist districts with management and planning, data processing, school district reorganization, pupil transportation, private school liaison, school board elections and board duties, and finance and asset management. The division is responsible for both state and federally funded school food and nutrition services, nonschool child care food services and elderly nutrition programs. The division provides agency support services, including financial management, budget preparation, development of administrative rules, legislative analysis and human resources.

The *Division for Learning Support: Equity and Advocacy*, created in Section 15.373 (1), Wisconsin Statutes, by Chapter 327, Laws of 1967, provides training and technical assistance for programs that help students in their career, educational, health, personal and social development. These programs cover school nursing, social work and psychological services; guidance and counseling services; alcohol and other drug abuse; suicide prevention; alcohol and traffic safety; school-age parents; school violence; HIV prevention and services; and other school health programs. The division also directs educational needs programs related to children of homeless individuals. It administers learning assistance, collaborative services, youth village grants, and the federal Emergency Immigrant Education Program. It also offers consultation for and supervision of multicultural education, including race, gender, and national origin equity; the American Indian Studies Program; and state and federally funded bilingual/English as a second language program. The division provides statewide coordination of local efforts to implement programs for children with exceptional educational needs and oversees implementation at the district level of federal programs related to children with disabilities, including Improving America's Schools Act of 1994 – Title I (Helping Disadvantaged Children Reach High Standards) and Title IV (Safe and Drug-Free Schools and Communities). It also administers pupil nondiscrimination laws and provides for recruiting and enrolling of children of migrant workers.

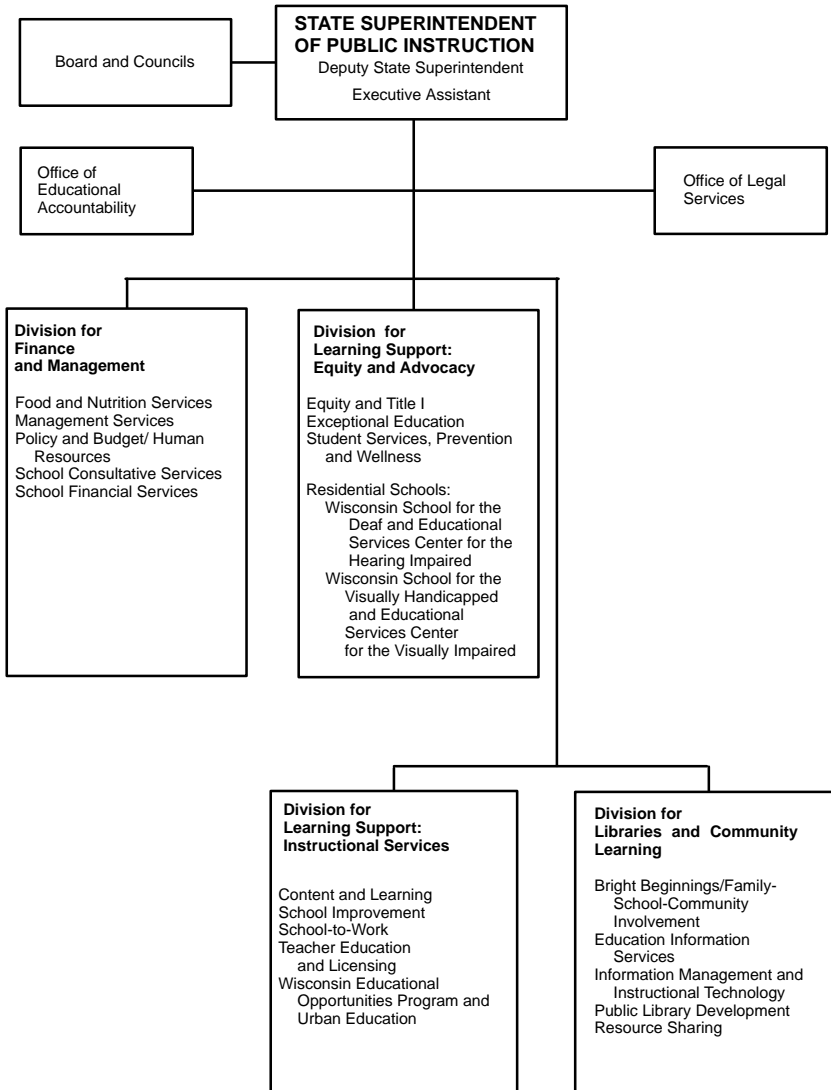
The division operates the Wisconsin School for the Deaf and Educational Services Center for the Hearing Impaired at Delavan and the Wisconsin School for the Visually Handicapped and Educational Services Center for the Visually Impaired at Janesville. These residential schools provide academic and vocational education along with individual pupil evaluations and technical assistance to local school districts.

The *Division for Learning Support: Instructional Services* offers assistance with curriculum and academic standards development and implementation, instructional methods and strategies, school-to-work, educational opportunity programs, urban education, and professional development and placement. The division monitors charter schools and school district compliance with various statutory and administrative code requirements, reviews college and university teacher and administrator training programs, and licenses public school teachers and administrators and library professionals, as well as private school teachers and administrators who request and qualify for a license.

The division conducts a variety of programs for prekindergarten through grade 12, including talent search, talent incentive grants, minority precollege scholarships, summer school programs, and the General Educational Development (GED) Program. It administers federal programs under Goals 2000, the Carl Perkins Vocational Education Act, the Job Training Partnership Act, Byrd Scholarships for outstanding academic achievement, the Dwight D. Eisenhower Professional Development Act, School-to-Work Opportunities, Challenging Content Standards, and charter school grants. The division provides direct services to students in programs, such as Sci-



DEPARTMENT OF PUBLIC INSTRUCTION



Units attached for administrative purposes under Sec. 15.03:  
 American Indian Language and Culture Education Board  
 Environmental Education Board



ence World, Teacher World, Arts World, Academic Decathlon, the Academic Scholars Program, and student vocational education organizations.

The *Division for Libraries and Community Learning*, created in Section 15.373 (2), Wisconsin Statutes, by Chapter 327, Laws of 1967, provides assistance for the development and improvement of public and school libraries; fosters interlibrary cooperation and resource sharing; and promotes information and instructional technology, early childhood development, and family and community involvement in education. The division administers a state aid program that provides funding for the state's 17 federated public library systems. It also administers the federal Library Services and Construction Act, the federal Learn and Serve America Program, and the Nutrition Education Training Program. The division provides interlibrary loan and reference services to the state's libraries and maintains an electronic union catalog of statewide library holdings. It operates a professional library for department staff, state educators and librarians. The division administers the public librarian certification program, the summer library reading program and programs that foster family and community involvement in schools and libraries. The division also administers the department's data processing and information technology support functions.

**History:** The Wisconsin Constitution, as adopted in 1848, required the state legislature to provide by law for the establishment of district schools that would be free to all children between the ages of 4 and 20 years. It also created a State Superintendent of Public Instruction to supervise public education. Under the 1849 Wisconsin Statutes, the superintendent was ordered to visit schools in all the counties, recommend textbooks and courses of instruction, and distribute state money for public schools to the counties.

Originally, the superintendent was elected to a 2-year term at the partisan general election in November. With the adoption of a constitutional amendment in 1902, the superintendent was placed on the nonpartisan April ballot and given a 4-year term of office.

1995 Wisconsin Act 27 (the biennial budget) attempted to initiate a major change in state supervision of education by creating a Department of Education, under the direction of an Education Commission. The department was to be administered by a secretary of education, appointed by the governor with senate consent. The act made the existing Superintendent of Public Instruction the commission's chairperson, but it transferred most of the state superintendent functions to the department. Before the changes took effect, the Wisconsin Supreme Court in *Thompson v. Craney*, 199 Wis. 2d 674, ruled the act unconstitutional and declared it void.

In the early years of statehood, the hiring and licensing of teachers was entirely a local matter. In 1861, the legislature created county superintendents of schools with the power to license teachers beginning in 1862. The state superintendent was also given licensing authority in 1868 (Chapter 169). Local districts and county superintendents continued to license teachers until 1939, when the legislature gave that power exclusively to the Department of Public Instruction.

For a number of years, state support of public education consisted of money derived principally from the sale of public lands that the federal government had granted to the state. In Chapter 287, Laws of 1885, the legislature levied a one-mill (one-tenth of a cent) state property tax to be collected by the state and distributed to counties for school support. The state's first attempt to equalize tax support for schools in property-poor districts was the Wisconsin Elementary Equalization Law of 1927 (Chapter 536). It was promoted by State Superintendent John Callahan, who also urged a 40% level of state support for local school costs – a figure not reached until after 1970.

Originally, Wisconsin only provided required tax support for elementary schools. Individual cities, such as Racine and Kenosha, funded their own high schools. The legislature enacted public support for high schools in 1875 (Chapter 323). Although state law had contained some curriculum requirements as early as 1849, the legislature did not establish high school graduation requirements until 1983. In 1985, it prescribed a detailed set of standards local districts must meet to be eligible for state aid.

State concern for special education began with the establishment of the Wisconsin Institute for Education of the Blind in Janesville in 1850 and a school for the deaf in Delavan in 1852. These schools were administered by public welfare agencies until transferred to the Department of Public Instruction in 1947. The 1927 Legislature enacted laws to provide aid for special



classes for “crippled children” and increased aid for districts to educate mentally handicapped children. Funding for education of all handicapped children was enacted in 1973.

While state administration of school libraries fell under the jurisdiction of the superintendent, the Free Library Commission set standards for public libraries. In 1965, the legislature transferred this function to the department.

Besides administering the state school aids formula, the department has also been responsible for administering federal aid for schools, beginning with the school lunch program in 1951. Current federal aid programs include the Improving America’s Schools Act of 1994, which had its origins in aid programs dating back to the 1960s; the Carl Perkins Vocational Education Act; the Dwight D. Eisenhower Professional Development Act; and the Library Services and Construction Act.

#### **Statutory Board and Councils**

*Alcohol and Other Drug Programs, Council on:* KAY NIGHTINGALE, *chairperson*; LOIS BALK, ANNE BATES, STEPHEN BRAUNGINN, TERRY ERICKSON, LAURA HAIG, DAN HAZAERT, MICHAEL LISKOWSKI, SHARON MARTIN, PAM REWEY, LEA RICE, THERESA RUSCH, ROBERT RYKAL, RUTH SCHMITT, JOAN SHUTTS, PENNY SIMMONS, JERRY SMITH, JOANNE STEVENS (appointed by state superintendent).

The Council on Alcohol and Other Drug Programs advises the state superintendent about programs to prevent or reduce alcohol and other drug abuse by minors. The council includes an unspecified number of members who serve at the pleasure of the state superintendent. The council was created by Chapter 331, Laws of 1979, and its duties are prescribed in Section 115.36 of the statutes.

*Business and Education Partnerships, Council on:* Inactive.

The Council on Business and Education Partnerships advises the state superintendent on increasing cooperation among business, industry, organized labor and the educational system. The council includes an unspecified number of members who are appointed by the governor for 3-year terms, and a majority of them must represent private business and industry. The council was created by 1985 Wisconsin Act 29, and its duties and composition are prescribed in Sections 15.09 (5) and 15.377 (2) of the statutes.

*Education of the Blind, Council on the:* KAREN HEESEN, CHERI MCGRATH, vacancy (appointed by state superintendent).

The Council on the Education of the Blind advises the state superintendent on services, programs and policies affecting children who are blind or who have vision disabilities. The council’s 3 members, who are appointed for staggered 6-year terms, must be visually handicapped and have “a demonstrated knowledge of the problems of the visually handicapped”. The council was created by Chapter 292, Laws of 1971, and its composition and duties are prescribed in Sections 15.377 (1) and 115.37 of the statutes.

*Exceptional Education, Council on:* MARY SKADAHL (parent of child with exceptional needs), *chairperson*; ANN BENTS (certified regular education teacher); VIVIAN WEBER-PAGEL (certified special education teacher); PAMELA VAN DOREN (school board member); BECKY LEWIS, PATRICIA RUTH, JAN SERAK, LINDA TATUM, JEANNIE WANLESS (parents of children with exceptional educational needs); BERT CHIANG, PATRICE COLLETTI, ED HAWKINSON, MONTE HOTTMANN, GERALD MAULSON, vacancy (appointed by state superintendent).

The Council on Exceptional Education consults with the state superintendent on programs, policies and rules related to the educational needs of exceptional children. It may report biennially to the legislature on progress made by special education programs and planning. The 15 council members are appointed for 3-year terms, and at least 5 members must be parents or guardians of children with exceptional educational needs. The council was created by Chapter 89, Laws of 1973, and its composition and duties are prescribed in Sections 15.377 (4) and 115.79 of the statutes.

*Instructional Telecommunications, Council on:* TERRI IVERSON, *chairperson*; THOMAS BUTLER, DANIEL SCHMELING (private education representatives); JODI DEMARINIS, SHERRY FREIBERG, LINDA KAUTZA, RICHARD MCDUGAL, MICHAEL O’BYRNE, WILMER PEARSON, KENNETH ROGERS, DONALD STEVENS, LARRY STORDAHL, LARRY WEIDNER, JOHN WHITNEY, vacancy (appointed by state superintendent).



*The award-winning series, Get Real!, provides positive role models for children. The series is produced by Wisconsin Public Television (WPT) and is seen on more than 70 stations. WPT serves Wisconsin children and students statewide through its general and instructional programming. (James Gill, Educational Communications Board)*



The Council on Instructional Telecommunications advises the state superintendent on matters related to telecommunications for schools, including instructional programming. The 15-member council includes representatives of each of the Cooperative Educational Service Agencies, nominated by the CESA boards of control, and 2 representatives of private elementary and secondary schools. Members serve 4-year terms. The council was created by 1985 Wisconsin Act 29, and its duties and composition are prescribed in Sections 15.09 (5) and 15.377 (3) of the statutes.

*Library and Network Development, Council on:* TIMOTHY E. LAATSCH (public member), *chairperson*; MARY BAYORGEON, MIRIAM ERICKSON, MARION HOWARD, C. PATRICIA LAVIOLETTE, MILTON MITCHELL, CAROL J. NELSON, PHILIP SAWIN, JR. (professional members); PAUL T. DIETZ, NORMAN GILL, RICHARD F. HAAS, A. EUGENE NEYHART, ILEEN SIKOWSKI, GYNETH SLYGH, ELIZABETH TARDOLA (public members) (appointed by governor).

The Council on Library and Network Development advises the state superintendent and the administrator of the Division for Libraries and Community Learning on the performance of their duties regarding library service. The 15 members serve 3-year terms. The council was created by Chapter 347, Laws of 1979, and its composition and duties are prescribed in Sections 15.377 (6) and 43.07 of the statutes.

*School District Boundary Appeal Board:* JOHN T. BENSON (superintendent of public instruction); DAVID AMUNDSON, JAMES EATON, ARLYN HOLLANDER, LARRY LUDLUM, HARVEY MANDEL, VERDELMA PAINE, JODY SLICK, MARY THURMAIER, PATRICIA WEBER, SANDRA WEIX, WALTER WETZEL, vacancy (appointed by state superintendent).

The School District Boundary Appeal Board hears appeals from persons aggrieved by actions taken under Chapter 117 of the statutes providing for school district reorganization. The board includes the state superintendent (or designee) and 12 members, 4 each from large, medium and small district school boards, who are appointed for staggered 2-year terms. No 2 members may live within the boundaries of the same Cooperative Educational Service Agency. The board was created by 1983 Wisconsin Act 27, and its composition and duties are prescribed in Sections 15.375 (2) and 117.05 of the statutes.

*Suicide Prevention, Council on:* Inactive.

The Council on Suicide Prevention advises the state superintendent regarding the department's activities, conducted in conjunction with the Department of Health and Family Services, to encourage schools to develop suicide prevention and intervention programs. The 7-member council must include a physician appointed jointly by the state superintendent and the secretary of health and family services. The council was created by 1985 Wisconsin Act 29, and its duties and composition are prescribed in Sections 15.09 (5) and 15.377 (7m) of the statutes.

#### INDEPENDENT UNITS ATTACHED FOR BUDGETING, PROGRAM COORDINATION AND RELATED MANAGEMENT FUNCTIONS BY SECTION 15.03 OF THE STATUTES

##### AMERICAN INDIAN LANGUAGE AND CULTURE EDUCATION BOARD

*American Indian Language and Culture Education Board:* CAROL CORNELIUS, DOROTHY W. DAVIDS, MARY M. DUFFY, ANNA RAE FUNMAKER, ONA W. GARVIN, GEORGIANNA E. IGNACE, DANA JACKSON, JOYCE M. MAKI, THELMA M. MCLESTER, DAVID MERRILL, ELAINE PETERS, ALFRED PYATSKOWIT, vacancy (all appointed by governor).

**Statutory References:** Section 15.375 (1); Chapter 115, Subchapter IV.

**Agency Responsibility:** The American Indian Language and Culture Education Board, which was created by Chapter 346, Laws of 1979, replaced the Council on Indian Education. The 13 board members are appointed for staggered 4-year terms upon the recommendation of Wisconsin Indian tribes, bands and organizations in this state. The board must include parents or guardians of American Indian children; American Indian teachers, school administrators, and a school board member; persons involved in programs for American Indian children; and persons experienced in the training of teachers for American Indian language and culture education programs. Members must be representative of all the American Indian tribes, bands and organizations in

this state. The board advises the state superintendent, the University of Wisconsin System Board of Regents, the Higher Educational Aids Council, and the Wisconsin Technical College System Board on all matters related to the education of American Indians. It encourages the establishment of American Indian language and culture education programs in school districts that enroll American Indian pupils and in alternative schools that have at least 75% American Indian enrollment.

#### ENVIRONMENTAL EDUCATION BOARD

*Environmental Education Board:* JOHN FINGER (K-12 environmental educators' representative), *chairperson*; SENATORS BURKE, COWLES; REPRESENTATIVES BLACK, OURADA; PAULI NIKOLAY (designated by superintendent of public instruction), CRAIG KARR (designated by secretary of natural resources), RUBIN HARRIS (designated by president, UW System), WILLIAM T. ROCKWELL (designated by director, Technical College System Board); RICK KOZIEL (conservation and environmental organizations representative), CYNTHIA GEORGESON (business and industry representative), WILLIAM NEUHAUS (labor representative), HAROLD SPENCER (nonformal environmental education organizations representative), RICHARD WILKE (higher education institutions faculty representative), DAN KVALHEIM (agricultural representative). (All, except legislators and *ex officio* members or their designees, are appointed by superintendent of public instruction.)

**Mailing Address:** P.O. Box 7841, Madison 53707-7841.

**Telephone:** (608) 266-3155.

**Statutory References:** Sections 15.375 (3) and 115.375.

**Agency Responsibility:** The Environmental Education Board awards matching grants to public agencies and nonprofit corporations to develop and distribute environmental education programs. The board consults with the state's educational agencies, the Department of Natural Resources and other state agencies to identify needs and establish priorities for environmental education. Its 15 members include 7 representatives of nongovernmental interest groups, who are appointed to serve 3-year terms. The board was created by 1989 Wisconsin Act 299.

#### PUBLIC SERVICE COMMISSION

**Commissioners:** CHERYL L. PARRINO, *chairperson*, parric@; DANIEL J. EASTMAN, eastmd@, JOSEPH P. METTNER, mettnj@ (appointed by governor with senate consent).

*Executive Assistant to the Chairperson:* JACQUELINE K. REYNOLDS, 267-7897, reynoj@

*Secretary to the Commission:* LYNDA L. DORR, 266-1266, dorrl@

*General Counsel:* STEVEN M. SCHUR, 266-1264, schurs@

*Legislative Liaison:* JASON T. KRATOCHWILL, 266-1383.

*Public Affairs Director:* JEFF BUTSON, 267-0912, butsoj@

**Mailing Address:** P.O. Box 7854, Madison 53707-7854.

**Location:** Public Service Commission Building, 610 North Whitney Way, Madison.

**Telephones:** (608) 266-5481; Consumer affairs: (800) 225-7729, (608) 266-2001; TTY: (608) 267-1479.

**Fax:** (608) 266-3957.

Address e-mail by combining the user ID and the state extender: [userid@mail.state.wi.us](mailto:userid@mail.state.wi.us)

**Internet Address:** <http://badger.state.wi.us/agencies/psc>

*Administrative Services, Division of:* GEORGIA L. MULCAHY, *administrator*, 266-3587, mulcag@

*Electric Division:* SUSAN E. STRATTON, *administrator*, 266-0699, strats@

*Examining Division:* BARBARA JAMES, *administrator*, 266-5473, jamesb@

*Natural Gas Division:* ANITA SPRENGER, *administrator*, 267-3590, sprena@

*Telecommunications Division:* R. SCOT CULLEN, *administrator*, 266-1567, culles1@

*Water, Compliance and Consumer Affairs, Division of:* JOYCE A. NARVESON, *administrator*, 267-7829, narvej@

*Information Technology, Office of:* PAUL C. NEWMAN, *administrator*, 267-5112, newmap@

**Publications:** Biennial Report; various statistics on electric utilities, gas utilities and telephone companies and guides for utility customers.

**Number of Employees:** 184.75.

**Total Budget 1995-96:** \$12,293,300.

**Total Budget 1996-97:** \$12,130,200.

**Statutory References:** Sections 15.06 and 15.79; Chapter 196.

**Agency Responsibility:** The Public Service Commission is responsible for regulating Wisconsin's public utilities and ensuring that utility services are provided to customers at prices reasonable to both ratepayers and utility owners. The commission regulates the rates and services of electric, gas distribution, heating, telephone, water, and combined sewer and water utilities. Its jurisdiction does not extend to most activities of electric cooperatives in Wisconsin.

Responsibilities of the commission include setting utility rates, determining levels for adequate and safe service, and approving utility bond sales and stock issuances. It confirms or rejects utility applications for major construction projects, such as power plants and fiber optic systems. In addition, the commission rules on proposed mergers between utility companies.

**Organization:** The 3 full-time commissioners are appointed to serve staggered 6-year terms, and an individual commissioner holds office until a successor is appointed and qualified. No member may have a financial interest in a railroad or public utility or serve on or under a political party committee. The governor designates a chairperson who, in turn, may appoint division administrators from outside the classified service.

**Unit Functions:** The *Division of Administrative Services* provides personnel and business management services to the commission and maintains central records.

The *Electric Division* is responsible for all major aspects of state regulation of electric utilities. It regulates rates charged by these utilities and reviews their planning and construction activity.

The *Examining Division* schedules and conducts quasi-judicial public hearings on utility matters before the commission and prepares verbatim transcripts of testimony.

The *Natural Gas Division* is responsible for the regulation of natural gas utilities. It develops short- and long-range plans for the regulations of these utilities and monitors and evaluates utility construction. The division intervenes in actions pending before federal regulatory agencies that may affect Wisconsin ratepayers.

The *Telecommunications Division* is responsible for regulating telecommunications utilities. It develops short- and long-range plans for regulation of the conveyance of voice, data or other information by telephone lines or other media. It analyzes telecommunications construction plans and rate design and changes. The division also administers statutory provisions which give telecommunications utilities greater flexibility to change rates without commission approval.

The *Division of Water, Compliance and Consumer Affairs* is responsible for the regulation of water and combined water and sewer public utilities. It audits all utility records for compliance with the Uniform System of Accounts and commission directives and offers assistance to utilities to help them comply with state laws and rules. The division also develops consumer service policies and programs for processing consumer complaints.

The *Office of Information Technology* manages data processing and evaluates and procures information technology resources for the department.

**History:** Public utility regulation in Wisconsin followed and was closely related to railroad regulation. Railroads were the first modern enterprise to have their rates regulated, and Wisconsin became one of the first states to pass such laws. Chapter 273, Laws of 1874, established a railroad rate structure and created 3 appointed railroad commissioners to supervise rail freight operations. Two years later in Chapter 57, Laws of 1876, the legislature repealed much of the 1874 law and established a single appointed commissioner of railroads. The commissioner was made an elected official in 1881 (Chapter 300).

The forerunner of today's commission dates from Chapter 362, Laws of 1905, which created an appointed 3-member Railroad Commission to supervise rail operations, appraise railroad property and set rates. With the enactment of Chapter 499, Laws of 1907, which extended the powers of the Railroad Commission, Wisconsin became the first state to regulate all public utilities.

The agency was renamed the Public Service Commission of Wisconsin by Chapter 183, Laws of 1931, and it was made responsible for comprehensive motor carrier regulation in 1933 (Chapter 488). The 1967 executive branch reorganization continued the commission as an independent agency. Chapter 29, Laws of 1977, transferred railroad and motor carrier regulatory functions to the Transportation Commission, which was renamed the Office of the Commissioner of Transportation in 1982. Railroad regulation has been located in the Office of the Commissioner of Railroads since 1993.

Laws passed in 1985 provided for a partial deregulation of public utility holding companies and telecommunications service, and 1993 Wisconsin Act 496 established a new regulatory framework for telecommunications utilities, which authorizes the commission to regulate the prices utilities charge rather than limiting their total earnings.

#### **Statutory Council**

*Telecommunications Privacy Council:* NEIL TRILLING, *chairperson*; CHERYL BARNES, MIKE CAUBLE, DAVID J. GILLES, LEONARD P. LEVINE, PAUL NELSON, SUE MCALLAN ROSKA, MARLIN SCHNEIDER, LOUISE TRUBEK, PAUL VERHOEVEN, ROBERT WELLS, HENRY CLAY WHITE (appointed by Public Service Commission).

The Telecommunications Advisory Council advises the commission on privacy guidelines designed to protect the privacy of users of telecommunications services. Members consist of representatives of telecommunications providers and consumers. The council was created by 1993 Wisconsin Act 496 and its composition and duties are prescribed in Section 196.209 of the statutes.

INDEPENDENT UNIT ATTACHED FOR BUDGETING, PROGRAM COORDINATION AND RELATED MANAGEMENT FUNCTIONS BY SECTION 15.03 OF THE STATUTES

#### **OFFICE OF THE COMMISSIONER OF RAILROADS**

*Commissioner of Railroads:* RODNEY W. KREUNEN.

**Mailing Address:** P.O. Box 8968, Madison 53708-8968.

**Location:** Suite 110, 610 North Whitney Way.

**Telephone:** (608) 266-7607.

**Fax:** (608) 261-8220.

**Number of Employees:** 5.50.

**Total Budget 1995-96:** \$448,300.

**Total Budget 1996-97:** \$352,200.

**Statutory References:** Sections 15.06 (1) (a) and 15.795 (1); Chapters 189-192 and 195.

**Agency Responsibility:** The Office of the Commissioner of Railroads enforces regulations related to railway safety and construction and, on request, investigates the safety of highway crossings. It is responsible for matters relating to rates and charges for railway freight, passenger fares and assessments.

The commissioner, who is appointed by the governor with senate consent to a 6-year term, may not have a financial interest in railroads and may not serve on or under any committee of a political party. The office was created by 1993 Wisconsin Act 123 to assume the functions relating to railroad regulation that had been transferred to the Public Service Commission by 1993 Wisconsin Act 16 when the Office of the Commissioner of Transportation was eliminated.

**Department of  
REGULATION AND LICENSING**

**Secretary of Regulation and Licensing:** MARLENE A. CUMMINGS, 266-8609,  
mcumming@mail.state.wi.us

*Deputy Secretary:* PATRICIA C. McCORMACK, 267-2435, pmccorma@mail.state.wi.us

*Executive Assistant and Legislative Liaison:* MYRA L. SHELTON, 266-8608,  
mshelton@mail.state.wi.us

*General Counsel:* WILLIAM DUSSO, 266-0011.

**Mailing Address:** P.O. Box 8935, Madison 53708-8935.

**Location:** 1400 East Washington Avenue, Madison.

**Telephones:** (608) 266-2112; TTY: (608) 267-2416.

**Internet Address:** <http://www.state.wi.us/agencies/drl/>

**Fax:** (608) 267-0644.

*Education, Examinations, and Public Information, Division of:* RICHARD BERG, *administrator*,  
267-1815.

*Enforcement, Division of:* JOHN TEMBY, *administrator*, 266-5434.

*Business Licensing and Regulation, Division of:*

*Business and Design Professions, Bureau of:* PATRICIA H. REUTER, *director*, 266-3423.

*Accounting Examining Board* (266-1397): RUSSELL L. HANSON\*, *chairperson*; FRANK R. PROBST, *vice chairperson*; KAREN A. KALISHEK, *secretary*; JOEL D. GARLOCK, SHARON HAMILTON, DANIEL J. RITTER\*, *vacancy*.

*Architects, Landscape Architects, Professional Geologists, Professional Engineers, Designers and Land Surveyors, Examining Board of* (266-1397).

The 6 professional sections listed below comprise the examining board, for a total of 18 professional members and 12 public members. Examining board officers are: G. ROBERT SHEFFERS, *chairperson*; WILLIAM C. McCULLOUGH, *vice chairperson*; DENNIS G. BROWN\*, *secretary*.

*Architect Section:* ROGER D. ROSLANSKY, *chairperson*; BRUCE D. KIEFFER, *vice chairperson*; LISA L. KENNEDY, *secretary*; DENNIS G. BROWN\*, MELVIN RUSSELL\*.

*Designer Section:* WILLIAM C. McCULLOUGH, *chairperson*; DEAN FIELD, *vice chairperson*; JAMES W. DORN, *secretary*; JEROME QUINN\*, DONNA M. ROZAR\*.

*Engineer Section:* MARK E. NURCZYK, *chairperson*; HARVEY SHEBESTA, *vice chairperson*; FLOYD A. RATHBURN\*, *secretary*; MARVIN F. DEVRIES, SHEILA PUDELKO\*, .

*Geologist Section:* JOAN E. UNDERWOOD, *chairperson*; DAVID M. MICKELSON, *vice chairperson*; DANIEL JACKSON\*, *secretary*; FRED BIRTS\*, MEREDITH OSTROM.

*Landscape Architect Section:* JAY FERNHOLZ, *chairperson*; RICK RETTLER, *vice chairperson*; RUTH G. JOHNSON\*, *secretary*; TERESA L. ADLER, SHARON PORTER\*.

*Land Surveyor Section:* G. ROBERT SHEFFERS, *chairperson*; DAVID M. SCHMALZ, *vice chairperson*; JOHN MARGITAN, *secretary*; MELVYN L. HOFFMAN\*, BERNARD E. THOMPSON\*.

*Barbering and Cosmetology Examining Board* (266-1630): JOHN FAHEY (representing a public school of barbering or cosmetology), *chairperson*; DANNY E. TROTTER\*, *vice chairperson*; FRANK M. CATRINE, *secretary*; YVONNE DAVIS, JOYCE HAUGESTUEN\*, HENRY H. MOORE, JR., TONI A. PALERMO (licensed electrologist), MARVIN L. RUSHING (representing a private school of barbering or cosmetology), *vacancy*.

*Funeral Directors Examining Board* (266-1630): D. BRUCE CARLSON, *chairperson*; PAMELA JANSSEN, *vice chairperson*; DIANE P. PRATT\*, *secretary*; DANIEL P. DENSOW, NORMAN N. GILL\*, ROY T. PFEFFER.

---

\*Asterisk indicates public member. Other members represent the profession regulated, unless otherwise noted. The governor appoints all examining board and council members with the advice and consent of the senate, unless otherwise indicated.

### Boards and Councils within the Department of Regulation and Licensing

Unit	Statutory Citation	Session Laws Creating or Amending	Duties Specified in Wisconsin Statutes
Accounting Examining Board	S. 15.405 (1)	Ch. 337, L. 1913; Ch. 327, L. 1967.	Ch. 442
Architects, Landscape Architects, Professional Geologists, Professional Engineers, Designers and Land Surveyors, Examining Board of	S. 15.405 (2)	Ch. 644, L. 1917; Ch. 486, L. 1931; Ch. 547, L. 1955; Ch. 446, L. 1969; 1993 WisActs 463 and 465.	Ch. 443
Auctioneer Board	S. 15.405 (3)	1993 WisAct 102.	Ch. 480
Barbering and Cosmetology Examining Board	S. 15.405 (17)	Ch. 221, L. 1915 (Committee of Examiners in Barbering); Ch. 431, L. 1939 (Board of Examiners in Cosmetology); 1987 WisAct 265 (combined the 2).	Ch. 454
Chiropractic Examining Board	S. 15.405 (5)	Ch. 408, L. 1925.	Ch. 446
Dentistry Examining Board	S. 15.405 (6)	Ch. 129, L. 1885.	Ch. 447
Funeral Directors Examining Board	S. 15.405 (16)	Ch. 420, L. 1905; Ch. 39, L. 1975 and 1983 WisAct 485.	Ch. 445
Hearing and Speech Examining Board	S. 15.405 (6m)	Ch. 300, L. 1969; 1989 WisAct 316.	Ch. 459
Council on Speech-Language Pathology and Audiology	S. 15.407 (4)	1989 WisAct 316.	S. 459.23 and 459.44
Medical Examining Board	S. 15.405 (7)	Ch. 264, L. 1897.	Ch. 448, Subchap.II
Dietitians Affiliated Credentialing Board	S. 15.406 (2)	1993 WisAct 443.	S. 448.74
Occupational Therapy Examining Council	S. 15.407 (1)(c)	1987 WisAct 399.	S. 15.407 (1)
Physical Therapists Affiliated Credentialing Board	S. 15.406 (1)	Ch. 327, L. 1967; 1993 WisAct 107.	S. 440.035
Physician Assistants, Council on	S. 15.407 (2)	Ch. 149, L. 1973.	S. 448.20
Podiatrists Examining Council	S. 15.407 (1)(b)	Ch. 327, L. 1967.	S. 15.407 (1)
Respiratory Care Practitioners Examining Council	S. 15.407 (1)(d)	1989 WisAct 229.	S. 15.407 (1)
Nursing, Board of	S. 15.405 (7g)	Ch. 346, L. 1911.	S. 441.01
Licensed Practical Nurses, Examining Council on	S. 15.407 (3)(b)	Ch. 402, L. 1949.	S. 441.10
Registered Nurses, Examining Council on	S. 15.407 (3)(a)	Ch. 365, L. 1921.	S. 441.05
Nursing Home Administrator Examining Board	S. 15.405 (7m)	Ch. 478, L. 1969.	Ch. 456
Optometry Examining Board	S. 15.405 (8)	Ch. 488, L. 1915.	Ch. 449
Pharmacy Examining Board	S. 15.405 (9)	Ch. 167, L. 1882.	Ch. 450
Controlled Substances Board	S. 15.405 (5g)	Ch. 384, L. 1969; Ch. 219, L. 1971; 1995 WisAct 305.	Ch. 961
Psychology Examining Board	S. 15.405 (10m)	Ch. 290, L. 1969.	Ch. 455
Real Estate Appraisers Board	S. 15.405 (10r)	1989 WisAct 340.	S. 458.03
Real Estate Board	S. 15.405 (11)	Ch. 656, L. 1919; Ch. 94, L. 1981.	Ch. 452
Real Estate Curriculum and Examinations, Council on	S. 15.407 (5)	1989 WisAct 341; 1989 WisAct 359.	S. 452.06 (2)
Social Workers, Marriage and Family Therapists and Professional Counselors, Examining Board of	S. 15.405 (7c)	1991 WisAct 160.	S. 457.03
Veterinary Examining Board	S. 15.405 (12)	Ch. 294, L. 1961.	Ch. 453

*Nursing Home Administrator Examining Board* (266-1630): SHIRLEY P. KELLER, *chairperson*; ANITA GENRICH, *vice chairperson*; KAREN DAVIS-ROBINSON, *secretary*; E. R. JONAS (MD); RHODA ZARIE ARZOOMANIAN (RN); NANCY HARPER\*, ROBERT MULDER, JR., LORAYNE M. RITT\*, JUDITH A. WHEELER. Nonvoting member: PHYLLIS TSCHUMPER (designee of secretary of health and family services).

*Real Estate Appraisers Board* (266-1630): MARY REAVEY (assessor), *chairperson*; PAUL R. VOZAR, *vice chairperson*; JAMES P. CAVEN\*, *secretary*; GARY J. CUSKEY\*, LINN A. DUESTERBECK, LAMARR J. FRANKLIN\*, LILL HAUSCHILD.

*Direct Licensing and Real Estate, Bureau of*: CLETUS J. HANSEN, *director*, 266-5439.

*Auctioneer Board* (266-5439): RICHARD O. LUST, *chairperson*; MARIE SKIC-LOY\*, *vice chairperson*; ROBERT BRANDAU, *secretary*; RONALD R. BAST, MARIE KOHLBECK\*, ROBERT J. MASSART, MARK SHAIN\*.

*Real Estate Board* (266-5439): JAMES R. IMHOFF, JR., *chairperson*; BEECHIE O. BROOKS, *vice chairperson*; KATHRYN NEITZEL\*, *secretary*; NANCY A. GERRARD, RICHARD HINSMAN\*, CHRISTINE NUERNBERG\*, *vacancy*.

*Real Estate Curriculum and Examinations, Council on* (266-5439): NANCY A. GERRARD (member of Real Estate Board designated by board), *chairperson*; JANET C. BRYNE, LAURIE S. FRANCIS\*, RICHARD C. GLESNER\*, SUSAN E. HAMER, RONALD E. HANSON, LLOYD P. LEVIN.

*Health Professions, Bureau of*: PATRICK D. BRAATZ, *director*, 266-0483.

*Controlled Substances Board* (266-7586): DAVID P. DONARSKI (psychiatrist appointed by governor), *chairperson*; THOMAS A. RUDY (pharmacologist appointed by governor), *vice chairperson*; YVONNE M. BELLAY (designated by secretary of agriculture, trade and consumer protection); ROMA ROWLANDS (designated by secretary of health and family services), JOHN KILLIAN (designated by attorney general); CYNTHIA A. BENNING (designated by Pharmacy Examining Board chairperson).

*Dentistry Examining Board* (266-2811): JAMES A. SIEVERT, *chairperson*; MARK J. CURRAN, *vice chairperson*; BETH E. JACKO-CLEMENCE (dental hygienist), *secretary*; THOMAS G. BRANDT, JUDITH FICKS\*, WILBER GILL, WILLA JEAN MOORE\*, CYNTHIA M. RIFFLE.

*Hearing and Speech Examining Board* (266-2811): JAMES CLEMENCE OGUREK (hearing instrument specialist), *chairperson*; ANN GMEINER HEINRICH (speech-language pathologist), *vice chairperson*; WILLIAM J. SIMIC, JR. (otolaryngologist), *secretary*; GERALDINE BERNARD\*, JAMES A. BOHREN, WILLIAM F. FASCHING (hearing instrument specialists); MEREDY HASE (audiologist); JOHN L. MCEWEN\*.

*Speech-Language Pathology and Audiology, Council on* (266-1396): SUSAN M. MARKS, *chairperson*; CATHIE PAULY, *vice chairperson*; SANDRA WEEDEN, *secretary*; VERONICA H. HEIDE, DAVID HENRY.

*Medical Examining Board* (266-2811): RODOLFO MOLINA, *chairperson*; W.R. SCHWARTZ, *vice chairperson*; GLENN HOBERG (DO), *secretary*; JAMES CHAMBERS, REBECCA DODSON\*, JAMES L. ESSWEIN, RONALD E. GROSSMAN, SIDNEY E. JOHNSON, SANDRA K. MAKHORN, MIKKI PATTERSON\*, PABLO M. PEDRAZA, WANDA ROEVER\*, DAROLD TREFFERT. Nonvoting member: *vacancy* (chairperson, Patients Compensation Fund Peer Review Council).

*Dietitians Affiliated Credentialing Board* (266-1626): SUSAN KASIK-MILLER, *chairperson*; JODI BRAUN, *vice chairperson*; DELORES A. PRICE\*, *secretary*; MONICA CEILLE.

*Occupational Therapy Examining Council* (266-1396): WAYNE WINISTORFER, *chairperson*; LINDA VIELHUBER, *vice chairperson*; JOANN JANSEN, *secretary*; 2 *vacancies*\*. (Medical Examining Board appoints all members.)

*Physical Therapists Affiliated Credentialing Board* (266-1626): NELDA JOY OLSON, *chairperson*; MICHAEL W. EDWARDS, *vice chairperson*; BARBARA FLAHERTY, *secretary*; SHIRLEY A. MOOK\*.

---

\*Asterisk indicates public member. Other members represent the profession regulated, unless otherwise noted. The governor appoints all examining board and council members with the advice and consent of the senate, unless otherwise indicated.

*Physician Assistants, Council on* (266-2811): SUSAN SKAROS, *chairperson*; GLEN D. BRANDT, *vice chairperson*; DAVID EBERT, JERRY NOACK (designee of vice chancellor for health sciences, UW-Madison); BERNARD SAFFOLD. (Medical Examining Board appoints the physician assistant members.)

*Health Professions and Services Licensing, Division of*: PATRICK D. BRAATZ, *administrator*, 266-0483.

*Podiatrists Examining Council* (266-2811): STEPHEN ARBES, *chairperson*; PATRICIA HAMILTON\*, MARK JULSRUD, LISA GARCIA REINICKE. (Medical Examining Board appoints all except public member.)

*Respiratory Care Practitioners Examining Council* (266-1396): MARY G. LAMKEN, *chairperson*; LORI ESHLEMAN, *vice chairperson*; PETER SANVILLE, *secretary*; GLORIA A. BEASER\*, BASIL VARKEY (MD). (Medical Examining Board appoints all except public member.)

*Pharmacy Examining Board* (266-2811): CYNTHIA BENNING, *chairperson*; DANIEL LUCE, *vice chairperson*; CHARLOTTE RASMUSSEN\*, *secretary*; GEORGE F. CHRISTIANSEN, CHARLES DINKEL, GEORGINA FORBES\*, JOHN R. HOFMANN.

*Veterinary Examining Board* (266-2811): GILBERT LEWIS, *chairperson*; ROBERT H. JOHNSTON, *vice chairperson*; SARAH L. KAMKE\*, *secretary*; WILLIAM BARTLETT, ELAINE MCGREGOR\*, DIANE SCOTT, JEAN M. HEYT THOMPSON; LINDA OLSON (veterinary technician).

*Health Service Professions, Bureau of*: ALFRED J. HALL, JR., *director*, 267-7223.

*Acupuncture Direct Certification* (267-7222).

*Chiropractic Examining Board* (267-7222): TERRY K. FREITAG, *chairperson*; JAMES L. GREENWALD, *vice chairperson*; DALE J. STRAMA, *secretary*; CYNTHIA J. GREEN\*, BETTYE J. LAWRENCE\*, BEVIER HASBROUCK SLEIGHT III.

*Nursing, Board of* (266-0257): TIMOTHY D. BURNS, *chairperson*; RUTH E. LINDGREN (RN), *vice chairperson*; BONNIE M. CREIGHTON (LPN), *secretary*; ANN BREWER, LORRAINE A. NOREM, vacancy (RNs); ELAINE AUGUST (LPN); ROBERTA P. OVERBY\*, MCARTHUR WEDDLE\*.

*Licensed Practical Nurses, Examining Council on*: JUNE BAHR, *chairperson*; DEBRA A. HERMANN, *vice chairperson*; ROSEMARY ERKINS-ROBBINS (RN on faculty of LPN school), *secretary*; LORETTA BOND (RN), ELAINE AUGUST (all appointed by Board of Nursing).

*Registered Nurses, Examining Council on*: MAUREEN E. O'BRIEN, *chairperson*; PAMELA A. MAXSON, *vice chairperson*; SALLY K. DAVIS-MASSEY, TERRI D. SCHWARTZ (all appointed by Board of Nursing).

*Optometry Examining Board* (267-7222): JOHN D. BONSETT-VEAL, *chairperson*; JOHN T. CARNES, *vice chairperson*; LEON D. GRIFFIN, JR., *secretary*; CHRIS HUBBELL, LYNNE LECOUNT\*, BOB ROBINSON\*, vacancy.

*Psychology Examining Board* (266-0070): STEPHEN F. SEAMAN, *chairperson*; BARBARA A. VAN HORNE, *vice chairperson*; TEE HEISER\*, *secretary*; PATRICIA M. BUJARD, CHARLES M. MOORE, B. ANN NEVIASER, vacancy.

*Social Workers, Marriage and Family Therapists and Professional Counselors, Examining Board of* (267-7212). The following 3 sections comprise the examining board, for a total of 10 professional members and 3 public members. Examining board officers are: STEVE ZANSKAS, *chairperson*; MURIEL J. HARPER, *vice chairperson*; JAN CARLSON, *secretary*.

*Social Worker Section*: CORNELIA HEMPE, *chairperson*; VIRGINIA S. HEINEMANN\*, *vice chairperson*; ANITA D. KROPP, *secretary*; MURIEL J. HARPER, DOUGLAS V. KNIGHT.

*Marriage and Family Therapist Section*: JAN CARLSON, *chairperson*; CHARLES P. BARNARD, *vice chairperson*; ANNE MARIE RATHBURN\*, *secretary*; LYNN J. GAUGER.

*Professional Counselor Section*: COLLEEN S. JAMES, *chairperson*; SUSAN A. KELL, *secretary*; MARK A. LADD\*, STELLA YOUNG.

---

\*Asterisk indicates public member. Other members represent the profession regulated, unless otherwise noted. The governor appoints all examining board and council members with the advice and consent of the senate, unless otherwise indicated.

**Publications:** Biennial Report; Consumer Complaints; Other Resources; The Impaired Professionals Procedure; *Regulation: In Partnership with the Consumer*; Wisconsin Directory of Accredited Schools of Nursing; Guidelines for Real Estate Licensing in Wisconsin; Guidelines for Charitable Organizations Relating to Filing Annual Financial Reports or Affidavits in Lieu of Reports; Information About Your Hearing; Study Guide for the Wisconsin Real Estate Continuing Education Test-Out Examination, Study Manual for the Wisconsin Private Detective Examination, plus informational bulletins for licensees, regulatory digests specific to regulatory boards and monthly disciplinary reports.

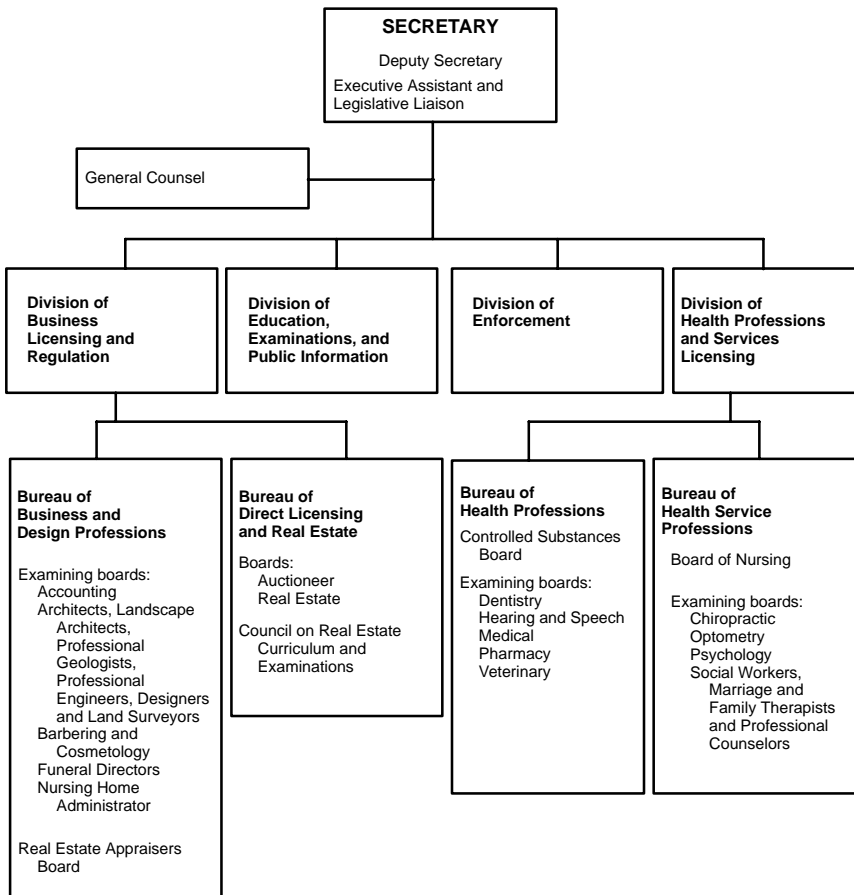
**Number of Employees:** 127.00.

**Total Budget 1995-96:** \$8,045,500.

**Total Budget 1996-97:** \$7,951,800.

**Statutory References:** Sections 15.08, 15.085, 15.40 and 15.405-15.407; Chapters 440-459 and 480.

DEPARTMENT OF REGULATION AND LICENSING



**Agency Responsibility:** The department is responsible for credentialing and regulating various professions and occupations in the state. It provides administrative services to the state occupational licensing boards and policy assistance in such areas as evaluating and establishing new licensing programs, creating routine procedures for legal proceedings and adjusting policies in response to public needs. Currently, the department and boards are responsible for regulating 65 professions and occupations and 25 types of business establishments.

The department investigates and prosecutes complaints against credential holders and assists with drafting statutes and administrative rules. Through the Office of Impaired Professional Procedures, it enforces participation agreements with credential holders who are chemically impaired, allowing them to retain their professional credentials if they comply with requirements, including treatment for chemical dependency.

The department provides direct regulation and licensing of certain occupations and activities and also regulates schools of barbering and cosmetology, aesthetics, electrology and manicuring. The Controlled Substances Board issues rules regulating the use of substances that have a potential for abuse.

Numerous boards attached to the department have independent responsibility to regulate specific professions in the public interest. Within statutory limits, they determine education and experience requirements for credentialing, develop and evaluate examinations, and establish standards for professional conduct. These standards are set by administrative rule and enforced through legal action upon complaints from the public. The boards may reprimand a credential holder or limit, suspend or revoke the credential of a practitioner who violates laws or board rules. In some cases, they also impose forfeitures.

Examining board members must be state residents, and they cannot serve more than 2 consecutive terms. No member may be an officer, director or employe of a private organization that promotes or furthers the profession or occupation regulated by that board.

**Organization:** The governor appoints the secretary of the department with the advice and consent of the senate. The secretary appoints a deputy secretary, an executive assistant and the heads of various subunits from outside the classified service.

The boards and councils attached to the department consist primarily of members of the professions and occupations they regulate. In 1975, the legislature mandated that at least one public member serve on each board. In 1984, it required an additional public member on most boards. Public members are prohibited from having ties to the profession they regulate. In most cases, the governor appoints all members of the licensing and regulation boards with the advice and consent of the senate, but some council members are appointed by their related examining boards or by the secretary of the department.

**Unit Functions:** The *Office of the Secretary* provides support services to the boards and the department, including personnel, data processing, fiscal management, budget and management analysis, procurement, document processing, credential renewal services, and legislative and legal services.

The *Division of Business Licensing and Regulation* handles the direct licensing responsibilities of the department including: auctioneers; real estate brokers and salespersons; real estate appraisers; time-share salespersons; interior designers; charitable organizations; professional fund-raisers and fund-raising councils; cemetery authorities, salespersons, and preneed sellers; private detectives, private detective agencies and private security persons; and boxing. The division also serves the auctioneer board, the real estate board and real estate appraisers board, and the following examining boards: accounting; architects, landscape architects, professional geologists, professional engineers, designers and land surveyors; barbering and cosmetology; funeral directors; and nursing home administrators.

The *Division of Education, Examinations, and Public Information* provides educational and examination services to the boards and the department. It assists with the development, administration and validation of credentialing examinations. In addition, it provides information to credential holders and the general public.

The *Division of Enforcement* investigates complaints against credential holders and matters within the jurisdiction of the regulatory authorities and then seeks resolution of disputes. Where



appropriate, it commences formal disciplinary action. The division inspects business establishments and audits the trust accounts of real estate brokers and the financial records of auctioneers, cemetery authorities, and cemetery preneed sellers.

The *Division of Health Professions and Services Licensing* provides services to the examining boards and councils that regulate health care professions, including audiology, dentistry, hearing and speech, medicine, occupational therapy, pharmacy, podiatrists, respiratory care practitioners, speech-language pathology and veterinary medicine. It serves the Controlled Substances Board and the examining boards for chiropractic; nursing; optometry; psychology; and social workers, marriage and family therapists and professional counselors. It assists the affiliated credentialing boards for dietitians and physical therapists and conducts the direct certification of acupuncturists. It also administers the impaired professionals procedure.

**History:** Chapter 75, Laws of 1967, created the Department of Regulation and Licensing and attached to it 14 separate examining boards that had been independent agencies. The department now provides centralized administrative services to 19 boards, 2 affiliated credentialing boards and 8 councils. Most recently, 1995 Wisconsin Act 305 transferred the Controlled Substances Board to the department from the Department of Health and Family Services.

The 1967 reorganization also transferred to the department some direct licensing and registration functions not handled by boards, including those for private detectives and detective agencies, charitable organizations, and professional fund-raisers and solicitors.

The department's responsibilities have changed significantly since its creation. Initially, it performed routine housekeeping functions for the examining boards, which continued to function as independent agencies. Subsequently, a series of laws centralized within the department substantive administrative functions previously performed by the boards and provided for direct regulation of several professions.

---

