

**Office of the  
SECRETARY OF STATE**

**Secretary of State:** DOUGLAS La FOLLETTE, 266-8888.

*Deputy Secretary of State:* JUNA KRAJEWSKI, 266-3470.

*Administrative Services Division:* MARLENE KOPLIN, *administrator*, 267-6810.

*Government Records Division:* MARJORIE H. ULMAN, *administrator*, 266-1437.

**Mailing Address:** P.O. Box 7848, Madison 53707-7848.

**Location:** 30 West Mifflin Street, 10th Floor, Madison.

**Telephone:** (608) 266-8888.

**Fax:** (608) 266-3159.

**Internet Address:** <http://badger.state.wi.us/agencies/sos/>

**Publications:** Notary Public Information Brochure.

**Number of Employees:** 8.50.

**Total Budget 1999-2001:** \$1,249,000.

**Constitutional References:** Article VI, Sections 1 and 2.

**Statutory Reference:** Chapter 14, Subchapter III.

**Agency Responsibility:** The Office of the Secretary of State performs a variety of services for state government and Wisconsin municipalities.

**Organization:** The secretary of state, a constitutional officer elected on a partisan ballot in the November general election, heads the Office of the Secretary of State.

**Unit Functions:** The *Administrative Services Division* maintains revenue and expenditure accounting systems and provides administrative support for the agency.

The *Government Records Division* keeps the Great Seal of the State of Wisconsin and affixes it to all official acts of the governor, issues notary public commissions, registers trade names and trademarks, coordinates the publication of state laws with the Legislative Reference Bureau, records official acts of the legislature and the governor, and files oaths of office. It also files deeds for state lands and buildings, issues notary authentications and apostilles (a form of international authentication of notaries public), preserves the original copies of all enrolled laws and resolutions, and files annexations and charter ordinances for villages and cities.

**History:** The 1836 congressional act that organized the Territory of Wisconsin provided for a secretary of the territory to be appointed by the President of the United States. This office was the forerunner of the post of secretary of state created by the Wisconsin Constitution. Delegates to the constitutional conventions of 1846 and 1848 determined that the secretary of state would be a constitutional officer. From the beginning of statehood until 1970, the secretary of state was elected for a 2-year term. Pursuant to a constitutional amendment ratified in 1967 and effective since the 1970 election, the term was extended to 4 years.

In the early days of statehood, the secretary of state personally performed a broad range of duties that are now delegated to the specialized departments of the executive branch. Chapter 276, Laws of 1969, created the Office of the Secretary of State to assist the secretary.

---

### Office of the STATE TREASURER

**State Treasurer:** JACK C. VOIGHT, 266-1714, jack.voight@ost.state.wi.us

*Deputy State Treasurer:* NICHOLAS J. VOEGELI, 266-7982, nicholas.voegeli@ost.state.wi.us

*Executive Assistant:* SCOTT M. FELDT, 266-3712, scott.feldt@ost.state.wi.us

**Mailing Address:** P.O. Box 7871, Madison 53707-7871.

**Location:** One South Pinckney Street, 5th Floor, Madison.

**Telephone:** (608) 266-1714; Unclaimed property: (608) 267-7977; EdVest College Savings Program: (888) 338-3789.

**Fax:** (608) 266-2647.

**Internet Address:** <http://www.ost.state.wi.us>

**Publications:** Monthly and biennial reports of the cash position of the state; monthly report on the Local Government Pooled-Investment Fund; periodic newsletter for local clerks and treasurers; and biennial classified listing of unclaimed property owners.

**Number of Employees:** 18.50.

**Total Budget 1999-2001:** \$3,468,700.

**Constitutional References:** Article VI, Sections 1 and 3.

**Statutory Reference:** Chapter 14, Subchapter IV.

**Agency Responsibility:** The Office of the State Treasurer serves citizens and state agencies by providing for receipt, custody, oversight, and disbursement of state moneys and money deposited by law with the state.

**Organization:** The state treasurer, a constitutional officer elected for a 4-year term by partisan ballot in the November general election, heads the Office of the State Treasurer and is the fiscal trustee for the State of Wisconsin.

**Functions:** The state treasurer acts as registrar for all state general obligation bonds and administers the Local Government Pooled-Investment Fund. The office makes a daily determination of funds available for investment by the State of Wisconsin Investment Board; makes monthly collections of fines, forfeitures, penalties, and court fees due the state; makes quarterly collections of probate fees; collects payments on loans made by the Board of Commissioners of Public Lands; and makes annual settlements with local government treasurers of taxes and fees due the state. The state treasurer serves as custodian of unclaimed and escheated property that is transferred to the state when owners and heirs cannot be found and runs outreach programs to locate rightful owners.

**History:** The territorial treasurer, an office created in 1839, was appointed by the governor, but the Wisconsin Constitution, adopted in 1848, made the office an elective partisan position. From 1848 through 1968, the state treasurer was elected to a 2-year term in the November general election. Since 1970, following ratification of a constitutional amendment in April 1967, the state treasurer has been elected to a 4-year term. Chapter 276, Laws of 1969, created the Office of the State Treasurer to assist the treasurer.

INDEPENDENT UNIT ATTACHED FOR BUDGETING, PROGRAM COORDINATION, AND  
RELATED MANAGEMENT FUNCTIONS BY SECTION 15.03 OF THE STATUTES

#### COLLEGE SAVINGS PROGRAM BOARD

*Members:* ALBERTA DARLING, *chairperson:* JACK C. VOIGHT (state treasurer), *vice chairperson:* DEBORAH DURCAN (designated by UW Board of Regents president); ROLF WEGENKE (president of the Wisconsin Association of Independent Colleges and Universities); JON D. HAMMES (designated by the chairperson of the Investment Board); L. ANN REID (president of the Technical College System Board); PAUL C. ADAMSKI, JOHN BUBOLZ, J. MICHAEL CLUMPNER, JOEL READ, MICHAEL D. WOLFF. (All except *ex officio* members are appointed by the governor with senate consent.)

**Mailing Address:** P.O. Box 7871, Madison 53707-7871.

**Telephone:** 264-7886.

**Fax:** 266-2647.

**E-Mail Address:** marty.olle@ost.state.wi.us

**Internet Address:** <http://www.edvest.state.wi.us>

**Statutory References:** Sections 14.57, 14.64, and 15.07 (1) (b) 2.

**Agency Responsibility:** The 11-member College Savings Program Board was created by 1999 Wisconsin Act 44 and its members serve 4-year terms. It administers the EdVest college savings program that provides for tax-sheltered savings accounts held in a trust fund to cover future higher education expenses.

---

### TECHNICAL COLLEGE SYSTEM

*Technical College System Board:* L. ANNE REID (public member), *president*; JONATHAN B. BARRY (public member), *vice president*; BRIAN ALBRECHT (designated by superintendent of public instruction), SCOTT FROMADER (designated by secretary of workforce development), GERALD RANDALL (member of UW System Board of Regents designated by board president); GEORGE FRANCO (employer member); PHILLIP L. NEUENFELDT (employee member); NANCY MOMMSEN (farmer member); vacancy (student member); A.J. AMATO, BARBARA MANTHEI, MARC MAROTTA, vacancy (public members). (All except *ex officio* members are appointed by governor.)

**State Director:** EDWARD CHIN, 266-1770, [chine@](mailto:chine@)

*Executive Assistant:* NATHANIEL E. ROBINSON, 266-7257, [robinsn@](mailto:robinsn@)

*Finance, Planning and Policy, Division of:* DANIEL CLANCY, *assistant state director*, 266-7983, [clancyd@](mailto:clancyd@)

*Budget, Finance and Management, Bureau of:* GREGORY A. WAGNER, *director*, 266-2947, [wagnerg@](mailto:wagnerg@)

*Planning and Management Information, Bureau of:* NORMAN C. KENNEY, *director*, 266-1766, [kenneyn@](mailto:kenneyn@)

*Policy and Government Relations, Bureau of:* JANET WASHBON, *director*, 266-2017, [washboj@](mailto:washboj@)

*Legal Counsel:* JESUS G.Q. GARZA, 267-9540, [garzaj@](mailto:garzaj@)

*Program and Economic Development, Division of:* DEBORAH J. MAHAFFEY, *assistant state director*, 266-2302, [mahaffd@](mailto:mahaffd@)

*Program Development and Operations, Bureau of:* KATHLEEN E. CULLEN, *director*, 266-9399, [cullenk@](mailto:cullenk@)

*Student and Support Services, Bureau of:* vacancy, *director*, 266-2302.

Address e-mail by combining the user ID and the state extender: <a href="mailto:userid@board.tec.wi.us">userid@board.tec.wi.us</a>
--

**Mailing Address:** P.O. Box 7874, Madison 53707-7874.

**Location:** 310 Price Place, Madison.

**Telephone:** 266-1207.

**Fax:** 266-1690.

**Internet Address:** <http://www.board.tec.wi.us>

**Publications:** *Go Here. Get There. Technical College Guide*; Technical College Facts; annual and biennial reports; annual evaluation reports of technical college offerings and services; cost allocation summaries; employer satisfaction reports; graduate follow-up reports.

**Number of Employees:** 82.05.

**Total Budget 1999-2001:** \$350,338,700.

**Statutory References:** Section 15.94; Chapter 38.



*The Academic Resource Center (ARC) at Western Wisconsin Technical College was built in 1994. Its library contains over 31,000 holdings and has 13 Web-accessible computer stations. The library serves Western's 20,000 degree and nondegree students and is fully handicapped accessible. (Western Wisconsin Technical College)*

**Agency Responsibility:** The Technical College System Board is the coordinating agency for the Technical College System. The board establishes statewide policies and standards for the educational programs and services provided by the 16 technical college districts that cover the state. The district boards, in turn, are responsible for the direct operation of their respective schools and programs. They are empowered to levy property taxes, provide for facilities and equipment, employ staff, and contract for services. The districts set academic and grading standards, appoint the district directors, hire instructional and other staff, and manage the district budget.

The system board supervises district operations through reporting and audit requirements and consultation, coordination, and support services. It sets standards for building new schools and adding to current facilities. It also provides assistance to districts in meeting the needs of target groups, including services for the disadvantaged, the disabled, women, dislocated workers, the incarcerated, and minorities.

The board administers state and federal aids. It works with the Department of Public Instruction to coordinate secondary and postsecondary vocational and technical programs. It also cooperates with the University of Wisconsin System to establish coordinated programming to make the services of the two agencies fully available to state residents. The board cooperates with the Department of Workforce Development to provide training for apprentices.

**Organization:** The 13-member Technical College System Board includes 9 members appointed by the governor to serve staggered 6-year terms and a technical college student appointed for a 2-year term. The student must be 18 years of age and a state resident who is enrolled at least half-time and in good academic standing. The governor may not appoint a student member from the same technical college in any two consecutive terms. No person may serve as board president for more than two successive annual terms. A 1971 opinion of the attorney general held that a member of a technical college district board could not serve concurrently on the state board (60 OAG 178). The board appoints a director from outside the classified service to serve at its pleasure, and the director selects the executive assistant and division administrators from outside the classified service.

The 16 technical college districts encompass 47 campuses. Each district is headed by a board of 9 members who serve staggered 3-year terms. District boards include 2 employers, 2 employees, a school district administrator, a state or local elected official, and 3 additional members as defined by statute. A district appointment committee, composed of county board chairpersons or school board presidents, appoints the board members, subject to approval of the state system board.

**Unit Functions:** The *Division of Finance, Planning and Policy* develops and coordinates budgeting, planning, and policy analysis. It is responsible for facilities development; research; labor market information; legislative analysis; management information; government relations; and oversight of district budgets, enrollments, and policies. The division also provides accounting, data processing, purchasing, and personnel services.

The *Division of Program and Economic Development* has responsibility for program definition, approval, evaluation, and review. It focuses on programs in agriculture, office services, marketing, home economics (including family and consumer education), health occupations, trade and industry (including apprenticeship, fire service, law enforcement, safety, and technical and vocational training), general education, adult basic education, and environmental education.

The division is responsible for personnel certification, student financial aid, federal projects for the disabled and disadvantaged, adult and continuing education outreach, and Job Training Partnership Act projects. It serves as liaison to business, industry, and secondary schools.

**History:** Laws passed in 1907 permitted cities to operate trade schools for persons age 16 or older as part of the public school system (Chapter 122), and allowed them to establish technical schools or colleges, under the control of either the school board or a special board (Chapter 344). In Chapter 616, Laws of 1911, Wisconsin was the first state to establish a system of state aid and support for industrial education. The law required every community with a population of 5,000 or more to establish an industrial education board, which was authorized to levy a property tax. It created the State Board of Industrial Education and an assistant for industrial education in the office of the State Superintendent of Public Instruction.

In the Laws of 1911, Wisconsin was the first state to set up apprenticeship agreements (Chapter 347) and require employers to release 14- to 16-year-olds for part-time attendance in continuation schools for apprentices, if such schooling was available (Chapter 505). Hours in class were to count as part of the total paid work hours. The schools, established through the work of Charles McCarthy, first director of the present-day Legislative Reference Bureau, emphasized general cultural and vocational education, as well as trade skills.

Due in part to the efforts of McCarthy, the U.S. Congress passed the Smith-Hughes Act in 1917, the first federal legislation specifically designed to promote vocational education, which it modeled on Wisconsin's vocational training programs. The act offered financial aid to states to help pay teachers' and administrators' salaries and provided funds for teacher training.

Chapter 494, Laws of 1917, changed the name of the State Board of Industrial Education to the State Board of Vocational Education, authorized it to employ a state director, and designated it as the sole agency to work with the newly created federal board.

During the Great Depression, Wisconsin tightened its compulsory school attendance laws, which resulted in more 14- to 18-year-olds attending vocational school. The demand for adult education also increased, as recognized by Chapter 349, Laws of 1937, which renamed the board the State Board of Vocational and Adult Education. During that same period, the vocational school in Milwaukee began to offer college transfer courses.

Events of the 1960s transformed the Wisconsin vocational-technical system into the postsecondary system of today. Federal vocational school legislation affected business education and emphasized training for the unemployed. The federal Vocational Education Act, passed in 1963, helped the local boards build new facilities. Chapter 51, Laws of 1961, authorized the state board to offer associate degrees for 2-year technical courses. The 1965 Legislature passed Chapter 292, which required a system of vocational, technical and adult education (VTAE) districts covering the entire state by 1970 and changed the board's name to the State Board of Vocational, Technical and Adult Education. (Chapter 327, Laws of 1967, dropped "State" from the name.) College transfer programs were authorized in Madison, Milwaukee, and Rhinelander.

As a result of the federal and state legislative changes in the 1960s, VTAE enrollments more than doubled to 466,000 between 1967 and 1982. The 1970s also saw significant increases in the number of associate degree programs. Other major statutory changes included the requirement that VTAE schools charge tuition and that they improve cooperation and coordination with the University of Wisconsin System. More recently, a greater emphasis has been placed on services to 16- to 18-year-old students.

In the past two decades, the system has increased its focus on lifelong learning; education for economic development; and services for groups that formerly had less access to education, including people in rural areas, women, and minorities. Special emphasis has been given to assisting the unemployed, displaced homemakers, and those with literacy problems.

1993 Wisconsin Act 399 renamed the VTAE system, changing it to the Technical College System, and designated the state board as the Technical College System Board. District VTAE schools became "technical colleges".

---

## Department of TOURISM

**Secretary of Tourism:** RICHARD SPEROS, 266-2345.

*Deputy Secretary:* MARY REID, 266-8773, mreid@

*Budget and Policy:* vacancy.

*General Counsel:* DENNIS FAY, 266-6747, dfay@

**Mailing Address:** P.O. Box 7976, Madison 53707-7976.

**Location:** 201 West Washington Avenue, 2nd Floor, Madison.

**Telephone:** 266-7621; Personalized trip planning and publications: (800) 432-8747; Travel Information M-F 8:00 a.m.-5:00 p.m.: (800) 372-2737.

**Fax:** 266-3403.

**Agency Internet Address:** <http://www.travelwisconsin.com/agency>

**Tourism Information Internet Address:** <http://travelwisconsin.com>

For e-mail combine the user ID and the state extender: [userid@tourism.state.wi.us](mailto:userid@tourism.state.wi.us)

*Administrative Services, Bureau of:* vacancy, director, 266-7621.

*Customer Services, Bureau of:* RENE G. DETTMAN, director, 267-7176, rdettm@

*Marketing Services Bureau:* SARAH M. KLAVAS, director, 266-3750, sklavas@

*Media and Industry Services, Bureau of:* KRISTA ELIAS, director, 261-8195.

*Technology Services, Bureau of:* JULIA HERTEL, 266-9974, jhertel@

*Film Office:* vacancy, director, 267-3686.

**Number of Employees:** 60.25

**Total Budget 1999-2001:** \$31,861,800.

**Statutory References:** Section 15.44; Chapter 41.

**Publications:** Official Wisconsin Travel Guide; Rustic Roads; Separate guides to biking, fishing, snowmobiling, and special events and recreation; *Viva Wisconsin!*; Wisconsin Adventure Vacations; *Wisconsin African-American Travel Guide*; *Wisconsin Heritage Traveler*; Wisconsin State Parks Visitors Guide; Wisconsin Snowmobile Trails Map.

**Agency Responsibility:** The Department of Tourism promotes travel to Wisconsin's scenic, historic, artistic, educational, and recreational sites. It stimulates the development of private commercial tourist facilities and assists cooperative projects between profit and nonprofit tourist ventures. The department encourages local tourist development through the Joint Effort Marketing Program, Heritage Tourism Program, and the production of films in Wisconsin.

**Organization:** The department is directed by a secretary who is appointed by the governor with the advice and consent of the senate. The secretary appoints the bureau directors from the classified service.

**Unit Functions:** The *Bureau of Administrative Services* is responsible for the internal operations of the department, including accounting, human resources, payroll, facility management, and purchasing services.

The *Bureau of Customer Services* maintains and operates Wisconsin's 13 travel information centers, which are located at points of entry on the state's borders and in Madison; Chicago, Illinois; and Bloomington, Minnesota. It produces a sports show program, which provides information at events focusing on hunting and fishing, and also handles mailings and travel information requests for the agency.

The *Marketing Services Bureau* promotes and advertises Wisconsin as "the Midwest's premiere travel destination". Through market research, coordinated advertising, promotional campaigns and programs, a grant program, and publications targeted to travelers' interests, the bureau is charged with attracting in-state and out-of-state tourists and associated vacation dollars.

The *Bureau of Media and Industry Services* is responsible for the department's community and public relations, as well as economic development and heritage tourism projects. The bureau

works with private business to promote and develop commercial tourist facilities. It also provides assistance for cooperative projects between profit and nonprofit tourist ventures and encourages local tourism efforts.

The *Bureau of Technology Services* provides the electronic distribution of information, telecommunications networking, and Internet application development for the agency and the state's tourism industry.

The *Film Office* assists other state agencies and the private sector in the production of feature length films, commercials, advertisements, and educational materials. It seeks to attract production companies from out of state to boost state and local economies and to build name recognition for Wisconsin as a travel destination.

**History:** State tourism promotion originated in the Department of Natural Resources to encourage travel to state parks and commercial recreational sites. Tourism functions were transferred to the Department of Business Development by Chapter 39, Laws of 1975, which created the Division of Tourism as a statutory entity within the department. The division was absorbed into the Department of Development that was created by Chapter 361, Laws of 1979, through merger of the Department of Business Development and the Department of Local Affairs and Development. 1995 Wisconsin Act 27 reorganized the division as the Department of Tourism, effective January 1, 1996.

### Statutory Council

**Tourism, Council on:** WILLIAM J. OTTO, *chairperson*; SENATORS BRESKE, ZIEN; REPRESENTATIVES REYNOLDS, SKINDRUD; RICHARD SPEROS (secretary of tourism), GEORGE L. VOGT (director, state historical society), GEORGE TZOUGROS (executive director, Arts Board); DEBORAH T. ARCHER, LE-VERN N. BOYD, CHERYL ZAUG CASEY, PETER CHAPMAN, GLORIA L. COBB, JILL DIEHL, WILLIAM T. GEIST, CHARLES J. METELKA, GARY C. ROBERTS, CHARLES E. STOKKE, GREGORY SWANBERG, JAMES VAN MATRE, vacancy. (All except *ex officio* members are appointed by governor.)

The 21-member Council on Tourism advises the secretary about tourism and encourages Wisconsin private companies to promote the state in their advertisements. The 14 appointed members serve 3-year terms, and 5 of them are elected by the council to assist the secretary in formulating a statewide marketing plan. Nominations for public member appointments must be sought from (but are not limited to) multicounty regional associations engaged in promoting tourism; statewide associations of businesses related to tourism; area visitor and convention bureaus; arts organizations; the Great Lakes Inter-Tribal Council, Inc., and other agencies with knowledge of American Indian tourism; and persons engaged in businesses catering to tourists. Nominees must have experience in marketing and promotion strategy and must represent the different geographical areas of the state and the diversity of the tourism industry. The council was created by 1987 Wisconsin Act 1 in the Department of Development and transferred to the Department of Tourism by 1995 Wisconsin Act 27. Its composition and duties are prescribed in Sections 15.447 (1) and 41.12 of the statutes.

INDEPENDENT UNITS ATTACHED FOR BUDGETING, PROGRAM COORDINATION, AND RELATED MANAGEMENT FUNCTIONS BY SECTION 15.03 OF THE STATUTES

### ARTS BOARD

*Members:* GLORIA M. KIRKING, *chairperson*; JONATHAN L. OVERBY, *vice chairperson*; RUTH LULL, *secretary*; DEËTTE BEILFUSS-EAGER, JAMES E. CARLEY, GERALD F. DARROW, LINDA GRUNAU, ROBERT D. HASTINGS III, SANDRA R. MILLS, JILL G. PELISEK, PATRICIA H. RUSCH, STEPHEN J. SCHOEN, EMMA R. TALEN, LINDA L. WARE, MARY ALICE WIMMER (appointed by governor).

*Executive Director:* GEORGE TZOUGROS, 267-2006, george.tzougros@arts.state.wi.us

**Mailing Address:** State Administration Building, 101 East Wilson Street, 1st Floor, Madison 53702.

**Telephone:** 266-0190; TTY: 267-9629.

**Fax:** 267-0380.

**E-mail Address:** artsboard@arts.state.wi.us

**Internet Address:** <http://www.arts.state.wi.us>

**Publications:** Annual Report; *Arts in the Wisconsin Economy: An Economic Impact Study*; Basic Record Keeping Procedures Handbook for Grant Applications; Bulletin; Guide to Programs and Services; Statewide Arts Service Organization Directory; Wisconsin Art and Craft Fairs Directory; Wisconsin Art Museums and Gallery Guide; Wisconsin Performing Arts Presenters Network Guide; Wisconsin Touring and Arts in Education Artist Directory; Wisconsin's Local Arts Agencies Directory.

**Number of Employees:** 12.75.

**Total Budget 1999-2001:** \$6,665,300.

**Statutory References:** Section 15.445 (1); Chapter 44, Subchapter III.

**Agency Responsibility:** The legislature directs the 15-member Arts Board to study and assist artistic and cultural activities in the state, assist communities in developing their own arts programs, and plan and implement funding programs for groups or individuals engaged in the arts.

As a funding agency, the board assists arts organizations and individual artists through a variety of programs designed to provide broad public access to the arts, strengthen the state's artistic resources, and create opportunities for individuals of exceptional talent. Financial support programs for individuals and organizations include apprenticeships, artists-in-education programs, challenge grants, community activities, fellowships, opportunity grants, program assistance and support, and programs for presenters. The board also provides matching grants to local arts agencies and municipalities through the Wisconsin Regranting Program.

The board aids Wisconsin's artistic community through an information program that includes workshops, conferences, research projects, and publications. The board regularly produces and distributes materials on local, state, and national arts activities for both the arts community and the general public. It arranges for the governor's official portrait, and it selects the artwork placed in state buildings as required by law.

Board members serve staggered 3-year terms and must be state residents with a concern for the arts. Each geographic quadrant of the state must be represented by at least 2 members. The board selects the executive director from outside the classified service. The board was created by Chapter 90, Laws of 1973, and attached to the Department of Administration to succeed the Governor's Council on the Arts, which had been established by the governor in 1963. 1995 Wisconsin Act 27 attached the board to the Department of Tourism.

### KICKAPOO RESERVE MANAGEMENT BOARD

**Members:** DONALD D. COLEMAN, RANDY S. HEISEL, RONALD M. JOHNSON, JACK ROBINSON (residents of specified municipalities and school districts); JAMES B. MOE, GEORGE E. NETTUM (watershed residents outside specified units); WILLIAM J. GREENDEER (watershed resident nominated by Ho-Chunk Nation); DAWN D. MAKES STRONG MOVE (member with knowledge of watershed's cultural resources, nominated by Ho-Chunk Nation); SENN R. BROWN (education representative), CATHERINE ONSAGER (recreation and tourism representative), SANDRA K. HEIDEL (environmental advocate) (nonresidents of watershed appointed by governor with senate consent).

**Executive Director:** MARCY WEST, [marcy.west@krm.state.wi.us](mailto:marcy.west@krm.state.wi.us)

**Mailing Address:** 505 North Mill Street, La Farge 54639.

**Telephone:** (608) 625-2960.

**Fax:** (608) 625-2962.

**E-mail Address:** [kickapoo.reserve@krm.state.wi.us](mailto:kickapoo.reserve@krm.state.wi.us)

**Internet Address:** <http://kvr.state.wi.us>

**Publications:** Kickapoo Valley Reserve Visitors' Guide.

**Number of Employees:** 2.00.

**Total Budget 1999-2000:** \$388,200.

**Statutory References:** Sections 15.07 (1) (b) 20., 15.445 (2), 41.40, and 41.41.

**Agency Responsibility:** The 11-member Kickapoo Reserve Management Board manages 8,569 acres in the Kickapoo Valley Reserve to preserve and enhance the area's environmental, scenic, and cultural features; provides facilities for the use and enjoyment of visitors; and promotes the reserve as a destination for vacationing and recreation. Subject to the approval of the governor, the board may purchase land for inclusion in the reserve and trade land in the reserve under certain conditions. If authorized by law, the board may construct and maintain facilities in the reserve.

The board also may lease land for purposes consistent with the management of the reserve or for agricultural purposes; authorize, license, regulate, and collect and spend revenue from private concessions in the reserve; accept gifts, grants, and bequests; and cooperate with and provide matching funds to nonprofit groups organized to provide assistance to the reserve.

The board may not authorize mining in the reserve or on any land acquired by the board and may not sell land that is in the reserve. It has authority to promulgate rules about use of the waters, land, and facilities under its jurisdiction, and the Department of Tourism is responsible for enforcement of state laws and rules relating to the reserve.

The governor appoints board members for staggered 3-year terms. Four members must be residents of villages, towns, and school districts in the immediate vicinity of the reserve; 2 must be residents of the Kickapoo River watershed outside of the immediate vicinity of the reserve; and one may be a resident of either a municipality or the watershed outside the reserve. Of these, 6 members are nominated by their local governments or school boards and one is nominated by the Ho-Chunk Nation. Various state agencies must appoint nonmember liaisons to the board, and the board may request that any federally recognized American Indian tribe or band in this state, other than the Ho-Chunk Nation, appoint a nonmember liaison. The board appoints the executive director from outside the classified service. The board was created as the Kickapoo Valley Governing Board by 1993 Wisconsin Act 349 and attached to the Department of Administration. 1995 Wisconsin Act 27 attached the board to the Department of Tourism, and it was renamed by 1995 Wisconsin Act 216.

#### LOWER WISCONSIN STATE RIVERWAY BOARD

**Members:** JAMES I. STAFF (Sauk County), *chairperson*; JAMES H. AMUNDSON (Dane County), *vice chairperson*; GLEN E. BENEKER (Crawford County), *secretary*; LLOYD B. NICE (Grant County), vacancy (Iowa County), DAVID O. MARTIN (Richland County). (County representatives are nominated by respective county boards and appointed by governor.) WILLIAM LUNDBERG, DOUGLAS M. MIYAMOTO, vacancy (recreational use groups' representative appointed by governor with senate consent).

**Executive Director:** MARK E. CUPP, 202 North Wisconsin Avenue, P.O. Box 187, Muscoda 53573-0187, mark.cupp@lwr.state.wi.us

**Telephone:** (608) 739-3188; (800) 221-3792.

**Fax:** (608) 739-4263.

**Internet Address:** <http://lwr.state.wi.us>

**Publications:** Biennial report; Strategic plan; Summary of regulations.

**Number of Employees:** 2.00.

**Total Budget 1999-2001:** \$251,200.

**Statutory References:** Section 15.445 (3); Chapter 30, Subchapter IV.

**Agency Responsibility:** The 9-member Lower Wisconsin State Riverway Board is responsible for protecting and preserving the scenic beauty and natural character of the riverway. The board reviews permit applications for buildings, walkways, timber harvests, utility facilities, bridges, and other structures in the riverway and issues permits for activities that meet established standards.

Board members serve staggered 3-year terms. Each of the 6 county representatives must be either an elected official or a resident of a city or village that abuts the Lower Wisconsin State Riverway or of a town located at least in part in the riverway. The 3 members representing recreational user groups may not reside in any of the 6 specified counties. The board was created by 1989 Wisconsin Act 31 and attached to the Department of Natural Resources. 1995 Wisconsin Act 27 attached the board to the Department of Tourism.

### STATE FAIR PARK BOARD

*Members:* WILLIAM R. DREW (technology experience), *chairperson*; SENATORS GROBSCHMIDT, ROSENZWEIG; REPRESENTATIVES GUNDERSON, STASKUNAS (legislative members recommended by party leadership and appointed by governor); RICHARD SPEROS (secretary of tourism), JAMES HARSDORF (secretary of agriculture, trade and consumer protection); CRAIG L. LEIPOLD, PATRICIA B. MCKEITHAN, TIMOTHY R. SHEEHY (business experience); R. DOUGLAS WILSON (agricultural experience); JAMES D. MEJCHAR (West Allis resident); BRENDA BRIMAGE (state resident). (All are appointed by governor with senate consent.)

**Interim State Fair Park Director:** ROBERT BRANDHERM, (414) 266-7020.

**Mailing Address:** Wisconsin State Fair Park, 8100 West Greenfield Avenue, P.O. Box 14990, West Allis 53214-0990.

**Telephone:** (414) 266-7000; (414) 266-7100 (ticket office); (800) 884-FAIR (recorded announcement of events).

**Fax:** (414) 266-7007.

**E-mail Address:** [wsp@wsp.state.wi.us](mailto:wsp@wsp.state.wi.us)

**Internet Address:** <http://www.wistatefair.com>

**Publications:** *A Brief History of the Wisconsin State Fair*; WSFP Update (semi-annual); cook book (semi-annual); annual non-fair events schedule; monthly non-fair events schedule; fair brochures, daily events schedule, and premium books.

**Number of Employees:** 51.20.

**Total Budget 1999-2001:** \$31,261,700.

**Statutory References:** Section 15.445 (4); Chapter 42.

**Agency Responsibility:** The State Fair Park Board manages the State Fair Park and supervises its use for fairs, exhibits, or promotional events for agricultural, commercial, educational, and recreational purposes and leases or licenses the property at reasonable rates for other uses when not needed for public purposes. The board is also directed to develop new facilities at State Fair Park and to provide a permanent location for an annual Wisconsin State Fair, major sports events, agricultural and industrial expositions, and other programs of civic interest.

**Organization:** The State Fair Park Board consists of 13 members until July 1, 2003, when the legislative membership is scheduled to end. Legislative members, who represent the majority and minority parties, are nominated by party leadership and appointed by the governor. The 7 non-legislative members serve staggered 5-year terms. The board appoints the park director from outside the classified service.

**History:** Beginning with the first Wisconsin State Fair at Janesville in October 1851, the event has served as a showcase for Wisconsin agriculture and commerce. The State Agricultural Society, which sponsored the first fair, continued to operate it through 1897. In that year, Chapter 301 created the Wisconsin State Board of Agriculture and placed operation of the fair under its control. When the Department of Agriculture was created in 1915, the state fair became part of the new department.

In Chapter 149, Laws of 1961, the independent Wisconsin Exposition Department, headed by a 7-member board, was created to manage the fair and the park's year-round operation. Under the 1967 executive branch reorganization, the Exposition Department became the Wisconsin Exposition Council in the Department of Local Affairs and Development.

Chapter 125, Laws of 1971, created a 3-member State Fair Park Board, appointed by the governor and attached to the Department of Agriculture for administrative purposes. In 1985 Wisconsin Act 20, the legislature increased board membership to 5, specified 5-year terms of service, and required senate confirmation of the governor's nominees (Chapter 20).

In 1990, as provided by 1989 Wisconsin Act 219, the State Fair Park Board became an independent body. 1995 Wisconsin Act 27 attached the board to the Department of Tourism, and 1999 Wisconsin Act 197 revised and increased board membership.

Over the years, the location of the state fair was debated and even its continued existence was in doubt. At various times between 1851 and 1885, Fond du Lac, Janesville, Madison, Milwau-

kee, and Watertown hosted the fair. Milwaukee was chosen as the state fair site from 1886 through 1891, and the fairs held there were so successful that a permanent site was purchased in what is now West Allis, a Milwaukee suburb. That site, first used for the 1892 fair, is included in the state fair's location today.

Several studies published during the 1960s recommended that the fair be moved to a larger site in the Milwaukee area. Chapter 125, Laws of 1971, decided the fair would remain at its site (partially in West Allis, partially in Milwaukee), with updated or new facilities being funded through self-amortizing state bonds. Fair operations have been self-financed since 1935. The park is undergoing a substantial construction and renovation program as a result of funding provided in 1999 Wisconsin Act 9. 1999 Wisconsin Act 197 revised board membership and authorized the board to create a nonprofit corporation to raise funds and provide support and contract with that same corporation for operation and development of the park. Act 197 also authorized the park board to permit private individuals to construct facilities on fair grounds under a lease agreement with the board.

---



*In 2001, the Wisconsin State Fair celebrated 150 years of highlighting advancements in agriculture and commerce. Each year the fair draws an attendance of over 900,000 as the state's largest and oldest annual event. (Robin Hensersky, State Fair Park Board)*

## Department of TRANSPORTATION

**Secretary of Transportation:** TERRENCE D. MULCAHY, 266-1114, terry.mulcahy@

*Deputy Secretary:* GENE E. KUSSART, 266-1114, gene.kussart@

*Executive Assistant:* ROBERT J. COOK, 266-1114, robert.cook@

*General Counsel, Office of:* JAMES S. THIEL, *director*, 266-8810, jim.thiel@

*Policy and Budget, Office of:* ALICE MOREHOUSE, *director*, 267-9618, alice.morehouse@

*Public Affairs, Office of:* LINDA THELKE, *director*, 266-7744, linda.thelke@, Fax: 266-7186.

**Mailing Address:** P.O. Box 7910, Madison 53707-7910.

**Location:** Hill Farms State Transportation Building, 4802 Sheboygan Avenue, Madison.

**Internet Address:** <http://www.dot.state.wi.us>

**Number of Employees:** 3,913.95.

**Total Budget 1999-2001:** \$3,920,858,900.

**Statutory References:** Sections 15.46, 15.465, and 15.467; Chapters 80, 84-86, 110, 114, and 340-351.

Address e-mail by combining the user ID and the state extender: <a href="mailto:userid@dot.state.wi.us">userid@dot.state.wi.us</a>
--

*Business Management, Division of:* JOYCE S. GELDERMAN, *administrator*, 266-0033,

joyce.gelderman@; JANE CZESHINSKI, *deputy administrator*, 267-3287, jane.czeshinski@

*Automation Services, Bureau of:* MICHAEL J. LEGGETT, *director*, 266-2090, mike.leggett@

*Financial Services, Bureau of:* CYNTHIA A. MOREHOUSE, *director*, 266-7023,

cynthia.morehouse@

*Human Resource Services, Bureau of:* SUSAN CHRISTOPHER, *director*, 266-7460,

susan.christopher@; TTY: 267-0259 (for affirmative action/equal employment opportunity).

*Management Services, Bureau of:* JAMES D. McDONNELL, *director*, 264-7700,

james.mcdonnell@

*Organizational Development Services, Office of:* JAMES S. ETMANCZYK, *director*, 266-2602,

james.etmanczyk@

*Motor Vehicles, Division of:* ROGER D. CROSS, *administrator*, 266-2233, roger.cross@; ORLANDO CANTO, *deputy administrator*, 267-4524, orlando.canto@

*Driver Services, Bureau of:* DOUGLAS THOMPSON, *director*, 266-1052, doug.thompson@

*Field Services, Bureau of:* GARY GUENTHER, *director*, 266-2743, gary.guenther@

*Vehicle Services, Bureau of:* MARTHA GERTSCH, *director*, 267-5121, martha.gertsch@

*Vehicle Emission Testing (Southeast Wisconsin):* (800) 242-7510.

*Motor Vehicle District Managers:*

District 1: GLENN JOHNSON, (608) 246-7540, 2001 Bartillon Drive,

Madison 53704-2614, glenn.johnson@

District 2: JILL HJELSAND, (920) 929-3720, 833 South Rolling Meadows Drive,

Fond du Lac 54936-2067, jill.hjelsand@

District 3: DONALD REINCKE, (608) 789-4630, 9477 Highway 16 East, Onalaska 54650-8527, donald.reincke@

Note: The area contained in former District 4 is now served by Districts 3 and 6.

District 5: RICHARD GIETZEL, (715) 234-3773, 113 North Main Street, Rice Lake 54868, richard.gietzel@

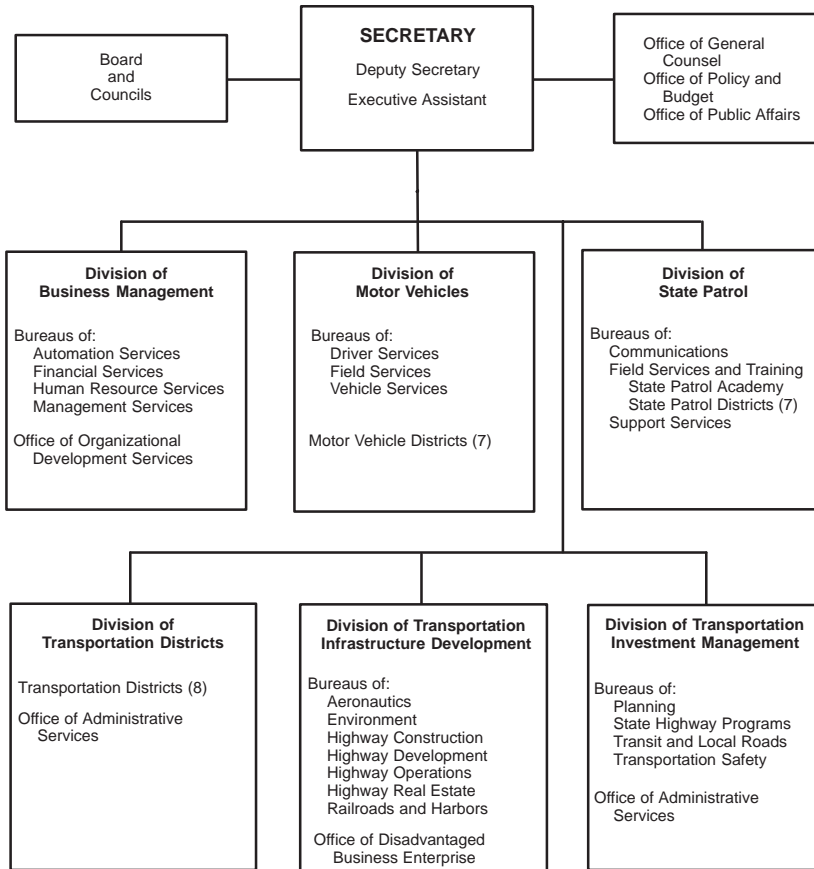
District 6: LINDA LEWIS, (920) 492-5731, 942 Vanderperren Way, Green Bay 54304-5344, linda.lewis@

District 7: ROBERT TRIBBEY, (262) 548-5611, Suite D, 2000 Pewaukee Road,

Waukesha 53188-2446, robert.tribbey@

District 8: HAZEL WILLS, (414) 227-4890, 819 North 6th Street, Milwaukee 53203-1606, hazel.wills@

## DEPARTMENT OF TRANSPORTATION



*State Patrol, Division of:* DOUGLAS L. VAN BUREN, *superintendent*, 267-7102, doug.vanburen@;  
ROBERT B. YOUNG, *deputy superintendent*, 264-8731, robert.young@

Division Mailing Address: P.O. Box 7912, Madison 53707-7912.

Telephones: General: (608) 266-3212; Road Condition Reports: Madison: (608) 246-7580;  
Milwaukee: (414) 785-7140; elsewhere in Wisconsin: (800) 762-3947.

Fax: 267-4495.

*Communications, Bureau of:* DAVID A. HEWITT, *director*, 266-0184, david.hewitt@

*Field Services and Training, Bureau of:* LT. COLONEL BENJAMIN H. MENDEZ.

*Wisconsin State Patrol Academy:* MAJOR GERALD J. ZUHLSDOFF, *director of training*, (608) 269-2500, gerald.zuhlsdorf@; Fax: (608) 269-5681; 95 South 10th Avenue, Fort McCoy 54656-5168.

*State Patrol District Captains:*

District 1: DAVID C. HEINLE, (608) 846-8500, david.heinle@; Fax: (608) 846-8523; 911 West North Street, P.O. Box 610, DeForest 53532-0610

District 2: ROBERT A. BEREITER, (262) 785-4700, robert.bereiter@; Fax: (262) 785-4723; 21115 Highway 18, Waukesha 53186-2985

District 3: DAVID J. PICHETTE, (920) 929-3700, david.pichette@; Fax: (920) 929-7666; P.O. Box 984, Fond du Lac 54936-0984

District 4: JEFFREY J. FRENETTE, (715) 845-1143, jeffrey.frenette@; Fax: (715) 848-9255; 2805 Martin Avenue, Wausau 54401-7172

District 5: ARNOLD T. KING, (608) 374-0513, arnold.king@; Fax: (608) 374-0599; 23928 Lester McMullin Drive, P.O. Box 604, Tomah 54660-0604

District 6: MARSHA M. WILEY, (715) 839-3800, marsha.wiley@; Fax: (715) 839-3841; 5005 Highway 53 South, Eau Claire 54701-8846

District 7: BENJAMIN H. MENDEZ, (715) 635-2141, benjamin.mendez@; Fax: (715) 635-6373; W7102 Green Valley Road, Spooner 54801

*Support Services, Bureau of:* DANIEL K. MCGUIRE, *director*, 267-7305, daniel.mcguire@  
*Transportation Districts, Division of:* DANIEL B. PRITCHARD, *administrator*, 266-2392, prited@mail.state.wi.us; LYNNE B. JUDD, *deputy administrator*, 266-7079, lynne.judd@; Fax: 267-3356; TTY: 261-8200.

Division Mailing Address: 4802 Sheboygan Avenue, Room 417, P.O. Box 7856, Madison 53707-7856.

Division E-mail Address: administrator.dtd@dot.state.wi.us

*Transportation District Directors:*

District 1: ROSE PHETTEPLACE, *director*, (608) 246-3800, rose.phetteplace@; Fax: (608) 246-7996; TTY: (608) 246-5385; 2101 Wright Street, Madison 53704-2583.

District 2: LES FAFARD, *director*, (262) 548-5902, leslie.fafard@; Fax: (414) 548-5662; TTY: (414) 548-8801; 2000 Pewaukee Road, Suite A, P.O. Box 798, Waukesha 53187-0798.

District 3: GEORGE MCLEOD, *director*, (920) 492-5643, george.mcleod@; Fax: (920) 492-5640; TTY: (920) 492-5673; 944 Vanderperren Way, P.O. Box 28080, Green Bay 54324-0080.

District 4: MICHAEL BERG, *director*, (715) 421-8300, michael.berg@; Fax: (715) 423-0334; TTY: (715) 421-8018; 2610 Industrial Street, P.O. Box 8021, Wisconsin Rapids 54495-8021.

District 5: JOSEPH OLSON, *director*, (608) 785-9022, joseph.olson@; Fax: (608) 785-9969; TTY: (608) 789-7862; 3550 Mormon Coulee Road, La Crosse 54601-6767.

District 6: DONALD GUTKOWSKI, *director*, (715) 836-2891, donald.gutkowski@; Fax: (715) 836-2807; TTY: (715) 836-6578; 718 West Clairemont Avenue, Eau Claire 54701-5108.

District 7: DANIEL GRASSER, *director*, (715) 365-3490, daniel.grasser@; Fax: (715) 365-5780; TTY: (715) 365-5719; Hanson Lake Road, P.O. Box 777, Rhinelander 54501-0777.

District 8: JERALD MENTZEL, *director*, (715) 392-7925, jerald.mentzel@; Fax: (715) 392-7863; TTY Relay Service: (800) 947-3529; 1701 North 4th Street, Superior 54880-1068.

*Administrative Services, Office of:* BONNIE CYGANER, *business services manager*, 267-4451, bonnie.cyganek@; Fax: 267-3356.

*Transportation Infrastructure Development, Division of:* MICHAEL A. CASS, *administrator*, 267-7111, michael.cass@; GARY WHITED, *deputy administrator*, 267-7673, gary.whited@; Division Fax: 264-6667; Division TTY: 266-6885.

*Aeronautics, Bureau of:* DAVID M. GREENE, *director*, 266-2480, david.greene@; Fax: 267-6748.

*Environment, Bureau of:* CAROL D. CUTSHALL, *director*, 266-9626, carol.cutshall@; Fax: 266-7818.

*Highway Construction, Bureau of:* RORY L. RHINESMITH, *director*, 266-3707, rory.rhinesmith@; Fax: 266-8459.

*Highway Development, Bureau of:* JOHN E. HAVERBERG, *director*, 266-0075, john.haverberg@; Fax: 267-1862.

*Highway Operations, Bureau of:* DAVID I. VIETH, *director*, 267-8999, david.vieth@; Fax: 267-7856; PETER F. RUSCH, *State Traffic Engineer*, 266-0459, peter.rusch@; Fax: 261-6295.

*Highway Real Estate, Bureau of:* NANCY J. MAIESKI, *director*, 266-2915, nancy.maieski@; Fax: 267-0307.

*Railroads and Harbors, Bureau of:* RONALD E. ADAMS, *director*, 267-9284, ron.adams@; Fax: 267-3567.

*Disadvantaged Business Enterprise, Office of:* EUGENE S. JOHNSON, *director*, 267-9527, eugene.johnson@; Fax: 267-3641; Milwaukee Support Services: (414) 438-4583; Fax: (414) 438-5389.

*Transportation Investment Management, Division of:* RUBEN L. ANTHONY, JR., *administrator*, 267-5254, ruben.antonio@; SANDRA K. BEAUPRÉ, *deputy administrator*, 266-7575, sandy.beaupre@; Fax: 267-0441; P.O. Box 7913, Madison 53707-7913.

*Planning, Bureau of:* KEN LEONARD, *director*, 267-7754, kenneth.leonard@

*State Highway Programs, Bureau of:* ROBERT ST. CLAIR, *director*, 266-9495, robert.st.clair@

*Transit and Local Roads, Bureau of:* ROD CLARK, *director*, 266-2963, rod.clark@

*Transportation Safety, Bureau of:* JOHN EVANS, *director*, 266-3048, john.evans@

*Administrative Services, Office of:* KAREN SMITH, *director*, 266-0725, karen.smith@

**Publications:** Biennial Report; Five-Year Airport Improvement Program (annual); Motorcyclist Handbook for Wisconsin; *Rustic Roads*; Six-Year Highway Improvement Program; Traffic Safety Reporter; *Trucking Wisconsin Style*; Wisconsin Aeronautical Chart (annual); Wisconsin Airport Directory (odd-numbered years); Wisconsin Alcohol Traffic Facts; Wisconsin Aviation Bulletin (quarterly); Wisconsin Commercial Drivers' Manual; Wisconsin Drivers' Book; Wisconsin Highway Map; Wisconsin Motorists' Handbook and Study Guide; Wisconsin Traffic Crash Facts (annual), State Highway Plan 2020; Wisconsin Motorcycle Crash Facts.

**Agency Responsibility:** The Department of Transportation is responsible for the planning, promotion, and protection of all transportation systems in the state. Its major responsibilities involve highways, motor vehicles, motor carriers, traffic law enforcement, railroads, waterways, mass transit, and aeronautics.

The department works with several federal agencies in the administration of federal transportation aids. It also cooperates with departments at the state level in travel promotion, consumer protection, environmental analysis, and transportation services for elderly and handicapped persons.

**Organization:** The secretary is appointed by the governor with the advice and consent of the senate and has overall management responsibility for the department. The secretary appoints the deputy secretary, executive assistant, and all division administrators from outside the classified service.

**Unit Functions:** The *Division of Business Management* plans and administers the department's programs for accounting and auditing, information technology, human resources, purchasing, vehicle fleet, facilities, and management services.

The *Division of Motor Vehicles* issues vehicle titles and registrations, individual identification cards, and handicapped parking permits; examines and licenses drivers, commercial driving instructors, and vehicle salespersons; certifies commercial driver examiners; licenses motor carriers, commercial driving schools, vehicle dealers, manufacturers, and distributors; and investigates consumer complaints about vehicle sales and trade practices. It keeps the records of drivers' traffic violations and demerit points. It is responsible for the vehicle emissions inspection program, and it administers reciprocal trucking agreements with other states and the Canadian provinces and provides traffic accident data to law enforcement officials, highway engineers, and traffic safety and media representatives. The division operates 7 district offices.

The *Division of State Patrol* promotes highway safety by enforcing state traffic laws regarding motor vehicles and motor carriers. The State Patrol also has criminal law enforcement powers



*Wisconsin highways play a vital role in the location of its citizens, businesses, and industries. The Marquette Interchange in Milwaukee handles over 300,000 vehicles daily. (Department of Transportation)*

---

and can assist local law enforcement agencies by providing emergency police services. It operates the statewide mobile data communications network, which is available to local law enforcement agencies, and it makes annual inspections of Wisconsin's school buses and ambulances. The division oversees 7 district offices and a law enforcement training academy open to all federal, state, county, local, and tribal law enforcement officers.

The *Division of Transportation Districts* consists of a central office staff and 8 district offices. The division is responsible for the planning, design, construction, and maintenance of nearly 12,000 miles of public roads and streets in the state trunk highway system, including 640 miles of Interstate highways within the state. The district offices serve as liaison between the department and local government agencies. They work with local representatives to define community transportation needs, and they facilitate two-way communication by reporting local needs to the department and informing local communities about the department's policies and activities.

The *Division of Transportation Infrastructure Development* is responsible for uniform statewide direction in the planning, design, construction, and operation of Wisconsin's airports, harbors, highways, and railroads. It advises other divisions regarding engineering, economic, environmental, and social standards and practices. It also monitors the quality and efficiency of the department's various programs and assures compliance with federal and state laws and regulations. The division administers all state and federal funding for airport, railroad, and harbor development projects in Wisconsin.

The *Division of Transportation Investment Management* performs statewide planning for highways, railroads, harbors, airports, and mass transit and promotes a multimodal transportation system to best serve state citizens and businesses. The division directs data collection; provides service to local governments and planning agencies; manages state road aids, highway finance, and

other transportation assistance programs; and promotes highway safety through public outreach programs.

**History:** The history of the Department of Transportation mirrors the evolution of twentieth century transportation. The Highway Commission was created when Chapter 337, Laws of 1911, authorized state aid for public highways. Later, Chapter 410, Laws of 1939, consolidated registration, licensing, inspection, enforcement, and highway safety promotion in the Motor Vehicle Department. The legislature established the Aeronautics Commission in Chapter 513, Laws of 1945, and directed it to cooperate with the federal government and other states to “prepare for the generally expected extensive expansion of aviation following the termination of World War II.”

The Department of Transportation was created by Chapter 75, Laws of 1967, which merged the Highway Commission, the Aeronautics Commission, and the Motor Vehicle Department. Chapter 500, Laws of 1969, required three divisions within the department: aeronautics, highways, and motor vehicles. The department was strengthened by Chapter 29, Laws of 1977, which vested accountability at the departmental, instead of divisional, level and gave the secretary, rather than the governor, the authority to appoint division heads. The secretary was also allowed to reorganize the department with the governor’s approval.

#### **Statutory Board and Councils**

**Highway Safety, Council on:** JOHN M. SYBELDON (citizen member), *chairperson*; ROBERT W. CHRISTIAN (citizen member), *vice chairperson*; RANDY THIEL (state officer), *secretary*; SENATORS BRESKE, LAZICH; REPRESENTATIVES KESTELL, RYBA, vacancy; RODNEY W. KREUNEN, JAY RISCH, PETER F. RUSCH, DOUGLAS VAN BUREN (state officers); LAVERNE E. HERMANN, ARNOLD C. WIDDES, ROBERT J. YOUNG (citizen members). (All except legislators appointed by governor.)

The 15-member Council on Highway Safety advises the secretary about highway safety matters. The council includes 2 senators and 3 assembly representatives who serve on standing committees that deal with transportation matters. The other 10 members, who serve staggered 3-year terms, include 5 state officers with transportation and highway safety duties and 5 citizen members. The council was originally created in the Office of the Governor by Chapter 276, Laws of 1969, and was moved to the Department of Transportation by Chapter 34, Laws of 1979. Its composition and duties are prescribed in Sections 15.467 (3) and 85.07 (2) of the statutes.

**Rustic Roads Board:** THOMAS P. SOLHEIM, *chairperson*; WILBUR PETROSKEY, *vice chairperson*; SENATOR BRESKE; REPRESENTATIVE STONE; MARION FLOOD, ALAN LORENZ, CLETUS ROANHOUSE, HOMER ROSA, 2 vacancies. (Nonlegislative members appointed by secretary of transportation.)

The 10-member Rustic Roads Board processes county and municipal applications for inclusion in the Rustic Roads program and promulgates rules for the program, which is designed to create and preserve rustic roads for the leisurely enjoyment of vehicular, bicycle, and pedestrian travel. The board includes the chairpersons of the senate and assembly committees with jurisdiction over transportation matters. Its 8 nonlegislative members serve staggered 4-year terms, and at least 4 of them must be nominees of the Wisconsin Counties Association. The board was created by Chapter 142, Laws of 1973, and its composition and duties are prescribed in Sections 15.465 (2) and 83.42 of the statutes.

**Uniformity of Traffic Citations and Complaints, Council on:** ORLANDO CANTO (designated by secretary of transportation), *chairperson*; WILLIAM HARLEY (Department of Transportation law enforcement member); MILTON MARQUARDT (designated by Wisconsin Sheriffs and Deputy Sheriffs Association); LT. JOHN CRAM (designated by County Traffic Patrol Association); LT. JOE DUESTER (designated by Chiefs of Police Association); GERALD MOWRIS (designated by State Bar of Wisconsin); BRIAN ROESSLER (designated by Wisconsin Council of Safety); SANDY WILLIAMS (designated by Wisconsin District Attorneys Association); TODD MEURER (designated by Judicial Conference); GARY L. CARLSON (designated by Director of State Courts).

The 10-member Council on Uniformity of Traffic Citations and Complaints recommends forms used for traffic violations. The council was created by Chapter 292, Laws of 1967, as the Uniform Traffic Citation and Complaint Committee and renamed by 1985 Wisconsin Act 145. Its composition and duties are prescribed in Sections 15.467 (4) and 345.11 of the statutes.

## UNIVERSITY OF WISCONSIN SYSTEM

*Board of Regents:* JAY L. SMITH, *president*; GERARD A. RANDALL, JR., *vice president*; ELIZABETH A. BURMASTER (superintendent of public instruction), JONATHAN B. BARRY (designated by president, Technical College System Board); ROGER E. AXTELL, PATRICK G. BOYLE, JOANNE BRANDES, ALFRED S. DE SIMONE, GUY A. GOTTSCHALK, GREGORY L. GRACZ, JAMES R. KLAUSER, PHYLLIS M. KRUTSCH, TOBY E. MARCOVICH, FREDERIC E. MOHS, JOSE A. OLIVIERI, LOLITA SCHNEIDERS; JOSEPH M. ALEXANDER (student). (All except *ex officio* members are appointed by governor with senate consent.)

*Secretary to the Board:* JUDITH A. TEMBY, 1860 Van Hise Hall, 1220 Linden Drive, Madison 53706-1557, (608) 262-2324.

**Mailing Address:** Central administrative offices for the UW System and the UW Colleges are located in Madison. Individual universities and 2-year UW Colleges can be reached by contacting them directly. Administrative offices for UW-Extension are in Madison; Extension representatives are located at each county seat.

**Publications:** administrative directory; biennial and annual reports; *Fact Book*; *Introduction to the University of Wisconsin System*; *Wisconsin Ideas*; unit bulletins, catalogs, reports, circulars; periodicals and books.

**Number of Employees:** 28,061.01

**Total Budget 1999-2001:** \$5,743,582,400.

**Constitutional Reference:** Article X, Section 6.

**Statutory References:** Section 15.91; Chapter 36.

### System Administration

1220 Linden Drive, Madison 53706-1559

General Telephone: (608) 262-2321

Internet Address: <http://www.wisconsin.edu>

**President of the University of Wisconsin System:** KATHARINE C. LYALL, 1720 Van Hise Hall, 1220 Linden Drive, Madison 53706-1559, (608) 262-2321.

*Chief Academic Officer:* CORA B. MARRETT, 1624 Van Hise Hall, 262-3826.

*Senior Vice President for Administration and Chief Operating Officer:* DAVID W. OLIEN, 1730 Van Hise Hall, 262-4048.

*Vice President for Finance:* DEBORAH A. DURCAN, 1752 Van Hise Hall, 262-1311.

*Vice President for University Relations:* LINDA WEIMER, 1708 Van Hise Hall, 262-0766.

### UW-Madison

161 Bascom Hall, 500 Lincoln Drive, Madison 53706

General Telephone: (608) 262-1234

Internet Address: <http://www.wisc.edu>

*Chancellor:* JOHN WILEY, 161 Bascom Hall, 500 Lincoln Drive, Madison 53706, 262-9946.

*Interim Provost and Vice Chancellor for Academic Affairs:* GARY SANDEFUR, 150 Bascom Hall, 262-1304.

*Vice Chancellor for Administration:* JOHN TORPHY, 100 Bascom Hall, 263-2467.

*Vice Chancellor for Legal and Executive Affairs:* MELANY STINSON NEWBY, 361 Bascom Hall, 263-7400.

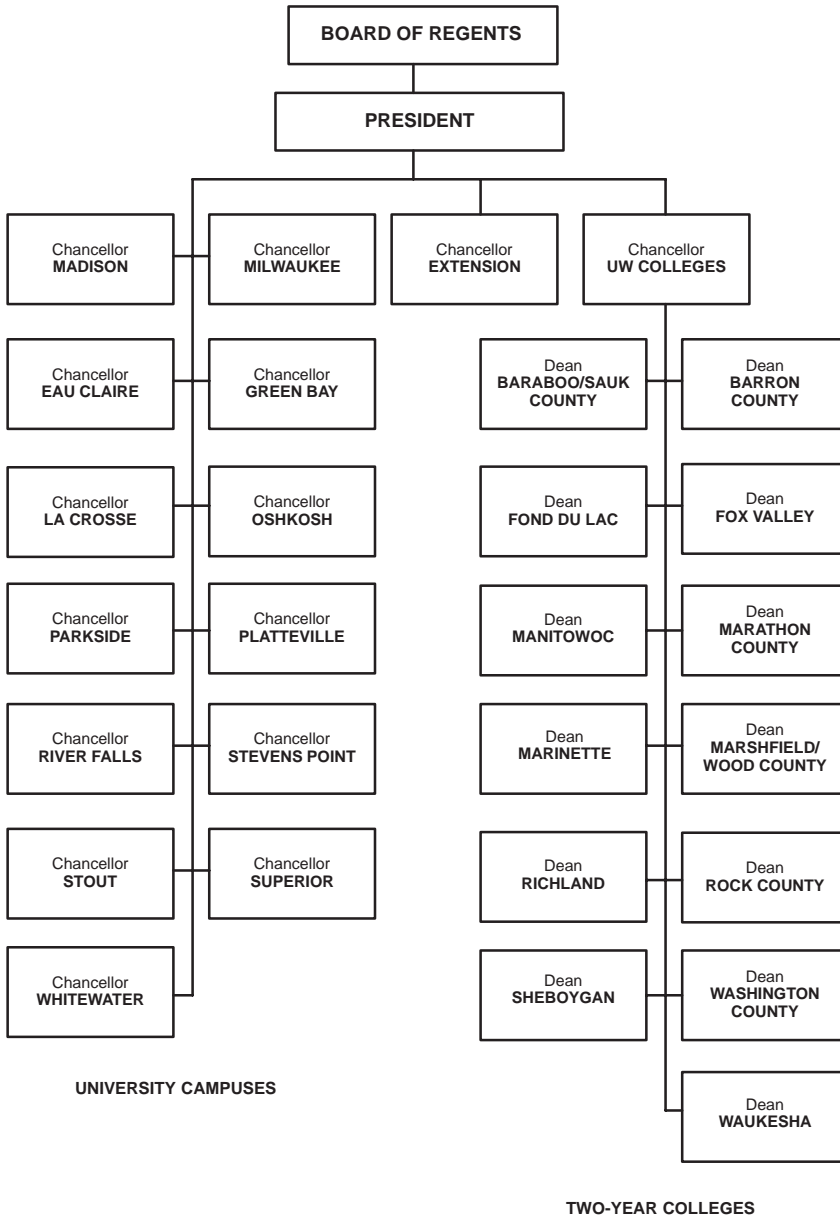
*Vice Chancellor for Student Affairs:* PAUL BURROWS, 117 Bascom Hall, 265-5228.

*Vice Chancellor for Medical Affairs:* PHILIP M. FARRELL, 1205 Medical Sciences Center, 263-4910

*Dean of Agricultural and Life Sciences:* ELTON ABERLE, 140 Agriculture Hall, 262-4930.

*Dean of Business:* ANDREW POLICANO, 5110 Grainger Hall, 262-5220.

UNIVERSITY OF WISCONSIN SYSTEM



Units attached for administrative purposes under Sec. 15.03:  
 Environmental Education Board  
 Pharmacy Internship Board  
 Veterinary Diagnostic Laboratory Board

*Dean of Education:* W. CHARLES READ, 123 Education Building, 262-6137.  
*Dean of Engineering:* PAUL PEERCY, 258 Mechanical Engineering Building, 262-3482.  
*Interim Dean of the Graduate School:* MARTIN CADWALLADER, 333 Bascom Hall, 262-1044.  
*Dean of Human Ecology:* ROBIN DOUTHITT, 1300 Linden Drive, 262-4847.  
*Dean of International Studies and Programs:* DAVID M. TRUBEK, 268 Bascom Hall, 262-9833.  
*Dean of Law:* KENNETH DAVIS, JR., 5211C Law Building, 262-0618.  
*Dean of Letters and Science:* PHILLIP R. CERTAIN, 102 South Hall, 263-2303.  
*Director of Libraries:* KENNETH FRAZIER, 372 Memorial Library, 262-2600.  
*Dean of Medical School:* PHILIP M. FARRELL, 1205 Medical Sciences Center, 263-4910.  
*Dean of Nursing:* KATHARYN A. MAY, H6/150 Clinical Science Center, 263-5155.  
*Dean of Pharmacy:* MELVIN WEINSWIG, 2340 Chamberlin Hall, 262-1414.  
*Dean of Veterinary Medicine:* DARYL BUSS, 2015 Linden Drive West, 263-6716.  
*Dean of Students:* ALICIA CHÁVEZ, 75 Bascom Hall, 263-5700.  
*Dean of Continuing Studies:* HOWARD MARTIN, Room 203, 905 University Avenue, 262-5821.  
*Chair of the Academic Staff Executive Committee:* WILTON SANDERS, 6201 Chamberlain Hall, 262-5916.  
*Chair of the University Committee:* THOMAS D. SHARKEY, 133 Bascom Hall, 262-3956.  
*Secretary of the Faculty:* DAVID MUSOLF, 133 Bascom Hall, 262-3956.  
*Director of Admissions:* ROBERT SELTZER, 360 Armory and Gymnasium, 262-0464.  
*Registrar:* MONTY NIELSEN, 130C Peterson Building, 262-3964.

#### **UW-Milwaukee**

P.O. Box 413, Milwaukee 53201-0413

General Telephone: (414) 229-1122

Internet Address: <http://www.uwm.edu>

*Chancellor:* NANCY L. ZIMPER, 202 Chapman Hall, P.O. Box 413, Milwaukee 53201, 229-4331.  
*Provost/Vice Chancellor:* JOHN WANAT, 215 Chapman Hall, 229-4501.  
*Assistant Chancellor, Administrative Affairs:* DONALD G. MELKUS, 310 Chapman Hall, 229-4461.  
*Assistant Chancellor, Student and Multicultural Affairs:* STANLEY BATTLE, 136 Chapman Hall, 229-4038.  
*Assistant Chancellor, University Relations:* SANDRA HOEH, 180A Chapman Hall, 229-4035.  
*Dean, College of Engineering and Applied Science:* WILLIAM GREGORY, 524 Engineering and Mathematical Sciences Building, 229-4126.  
*Dean, College of Letters and Science:* MARSHALL R. GOODMAN, 218A Holton Hall, 229-5895.  
*Dean, School of Allied Health Professions:* RANDALL S. LAMBRECHT, 897 Enderis Hall, 229-4712.  
*Dean, School of Architecture and Urban Planning:* ROBERT C. GREENSTREET, 241 Architecture and Urban Planning Building, 229-4016.  
*Interim Dean, School of the Arts:* ROBERT C. GREENSTREET, 115A Sabin Hall, 229-4762.  
*Dean, School of Business Administration:* CHARLES KRONCKE, N425 Business Administration Building, 229-6256.  
*Acting Dean, School of Education:* MOHAMMED M. AMAN, 595 Enderis Hall, 229-4181.  
*Dean, Graduate School and Associate Provost for Research:* WILLIAM A. RAYBURN, 247 Mitchell Hall, 229-5483.  
*Dean, School of Library and Information Science:* MOHAMMED M. AMAN, 1193 Enderis Hall, 229-4709.  
*Interim Dean, School of Nursing:* SALLY LUNDEEN, 767B Cunningham Hall, 229-4189.  
*Dean, School of Social Welfare:* JAMES BLACKBURN, 1095 Enderis Hall, 229-4400.



*Field studies take UW students to wide-ranging locations. The crew from the Geology Museum is shown excavating bones of a Triceratops dinosaur at a dig in eastern Montana. (UW-Madison University Communications)*

*Dean, Outreach and Continuing Education Extension:* SUSAN KELLY, 161 West Wisconsin Avenue, 53203, 227-3326.

*Director of Admissions:* BETH L. WECKMUELLER, 222 Mellencamp Hall, 229-6164.

*Special Assistant to the Chancellor for Development and Alumni Relations:* GENE HABERMAN, Floor 2 Alumni House, 906-4640.

*Secretary of the University:* ELLEN MURPHY, 225 Mitchell Hall, 229-5988.

#### **UW-Eau Claire**

Schofield Hall, Park and Garfield Avenues, P.O. Box 4004, Eau Claire 54702-4004

General Telephone: (715) 836-2637

Internet Address: <http://www.uwec.edu>

*Chancellor:* DONALD J. MASH, 836-2327.

*Provost and Vice Chancellor, Academic Affairs:* RONALD N. SATZ, 836-2320.

*Vice Chancellor, Business and Student Services:* WILLIAM HARMS, 836-4810.

*Interim Dean, College of Arts and Sciences:* TED WENDT, 836-2542.

*Dean, College of Business:* V. THOMAS DOCK, 836-5509.

*Dean, College of Professional Studies:* MARK W. CLARK, 836-3400.

*Dean of Students:* ANN LAPP, 836-5626.

*Interim Director of Admissions:* KRIS ANDING, 836-5415.

*Registrar:* SUE SHELTON MOORE, 836-4524.

**UW-Green Bay**

2420 Nicolet Drive, Green Bay 54311-7001

General Telephone: (920) 465-2000

Internet Address: <http://www.uwgb.edu>*Interim Chancellor:* WILLIAM KUEPPER, 465-2207.*Provost and Vice Chancellor for Academic Affairs:* HOWARD COHEN, 465-2334.*Legislative Liaison:* JEANNE STANGEL, 465-5025.*Associate Provost for Student Services/Dean of Students:* SUE KEIHN, 465-2152.*Vice Chancellor, Business and Finance:* THOMAS MAKI, 465-2210.*Assistant Chancellor, Planning and Budget:* DEAN RODEHEAVER, 465-2039.*Assistant Chancellor for University Advancement:* CHUCK WILSON, 465-2074.*Assistant Dean for Enrollment Services:* STEVE NEIHEISEL, 465-2111.*Interim Dean, Liberal Arts and Sciences:* MICHAEL MURPHY, 465-2476.*Interim Dean, Professional Studies and Outreach:* V. JANE MUHL, 465-2171.*Associate Dean, Graduate Studies and Research:* RONALD STIEGLITZ, 465-2711.*Associate Director, Marketing and University Communication:* CHRISTOPHER SAMPSON,  
465-2527.*Registrar:* SALLY MANCOSKE, 465-2063.**UW-La Crosse**

1725 State Street, La Crosse 54601-9959

General Telephone: (608) 785-8000

Internet Address: <http://www.uwlax.edu>*Chancellor:* DOUGLAS N. HASTAD, 785-8004.*Interim Provost/Vice Chancellor:* RONALD G. RADA, 785-8007.*Assistant Chancellor, Administrative Services:* LAWRENCE L. LEBIECKI, 785-8020.*Assistant Chancellor, Advancement and External Relations:* vacancy, 785-8489.*Assistant Chancellor, Budget Planning and Control:* RONALD LOSTETTER, 785-8594.*Assistant to the Chancellor for Affirmative Action and Diversity:* ALFRED S. THOMPSON, JR.,  
785-8541.*Executive Director, Human Resources:* JENNIFER WILSON, 785-8013.*Interim Chief Information Officer:* JOHN P. TILLMAN, 785-8662.*Dean of Students and Academic Services:* PETRA M. ROTER 785-8151.*Interim Dean, College of Business Administration:* WILLIAM G. COLCLOUGH, 785-8095.*Interim Dean, College of Health, Physical Education and Recreation:* GARTH T. TYMESON,  
785-8157.*Dean, College of Liberal Studies:* JOHN E. MAGERUS, 785-8113.*Dean, College of Science and Allied Health:* MICHAEL E. NELSON, 785-8218.*Interim Director of Graduate Studies:* RODERICK D. DUQUETTE, 785-8124.*Director, Admissions:* TIMOTHY R. LEWIS, 785-8939.*Registrar:* DIANE L. SCHUMACHER, 785-8953.

**UW-Oshkosh**

800 Algoma Boulevard, Oshkosh 54901-8617

General Telephone: (920) 424-1234

Internet Address: <http://www.uwosh.edu>*Chancellor:* RICHARD H. WELLS, 424-0200.*Special Assistant to the Chancellor:* THOMAS R. GROGAN, 424-0424.*Provost/Vice Chancellor:* KEITH MILLER, 424-0300.*Associate Vice Chancellor:* WILLIAM C. WRESCH, 424-1410.*Assistant Chancellor, Student Affairs:* ELLIOTT L. GARB, 424-4000.*Assistant Vice Chancellor, Academic Support:* MURIEL A. HAWKINS, 424-3080.*Assistant Vice Chancellor, Graduate School and Research:* NANCY J. KAUFMAN, 424-1223.*Assistant Vice Chancellor, Information Technology:* JOHN F. BERENS, 424-3334.*Executive Director, Administrative Services:* THOMAS G. SONNLEITNER, 424-3030.*Dean, College of Business Administration:* E. ALAN HARTMAN, 424-1424.*Dean, College of Education and Human Services:* CARMEN COBALLES-VEGA, 424-3322.*Dean, College of Letters and Science:* MICHAEL ZIMMERMAN, 424-1210.*Dean, College of Nursing:* MERRITT E. KNOX, 424-3089.*Interim Dean of Students:* JAMES M. CHITWOOD, 424-3100.*Director, Admissions:* JILL M. ENDRIES, 424-0228.*Director of Budgets:* LORI WORM, 424-3033.*Registrar:* DANIEL J. EDELBECK, 424-3007.**UW-Parkside**

P.O. Box 2000, Kenosha 53141-2000

General Telephone: (262) 595-2345

Internet Address: <http://www.uwp.edu>*Chancellor:* JOHN P. KEATING, 595-2211.*Provost/Vice Chancellor:* JOHN M. OSTHEIMER, 595-2261.*Vice Chancellor, Administrative and Fiscal Affairs:* WILLIAM W. STREETER, 595-2141.*Associate Vice Chancellor for Planning, Budget, and Resource Allocation/Graduate Dean:* vacancy, 595-2144.*Associate Vice Chancellor for Student Services/Dean of Students:* STEPHEN MCLAUGHLIN, 595-2598.*Assistant Vice Chancellor for University Relations:* LENNY KLAVERN, 595-2060.*Dean, College of Arts and Sciences:* DONALD CRESS, 595-2188.*Dean, School of Business and Technology:* MARWAN WAFA, 595-2243.*Director of Admissions Processing:* MATTHEW JENSEN, 595-2757.*Registrar:* RICHARD LOTT, 595-2237.**UW-Platteville**

1 University Plaza, Platteville 53818-3099

General Telephone: (608) 342-1491

Internet Address: <http://www.uwplatt.edu>*Chancellor:* DAVID J. MARKEE, 342-1234.*Provost and Vice Chancellor:* CAROL SUE BUTTS, 342-1261.*Associate Vice Chancellor:* CHARLES COLLINS, 342-1262.

*Assistant Chancellor, Business Affairs:* STEPHEN ZIELKE, 342-1226.  
*Assistant Chancellor for Student Affairs:* MICHAEL VINEY, 342-1854.  
*Dean of Admissions and Enrollment Management:* RICHARD SCHUMACHER, 342-1125.  
*Dean, College of Business, Industry, Life Science and Agriculture:* DUANE M. FORD, 342-1547.  
*Dean, College of Engineering, Mathematics and Science:* RICHARD SHULTZ, 342-1561.  
*Interim Dean, College of Liberal Arts and Education:* SALLY STANDIFORD, 342-1151.  
*Dean, School of Graduate Studies:* CHARLES COLLINS, 342-1262.  
*Registrar:* EDWARD DENEEN, 342-1321.

#### **UW-River Falls**

410 South Third Street, River Falls 54022-5001  
 General Telephone: (715) 425-3911  
 Internet Address: <http://www.uwrf.edu>

*Chancellor:* ANN M. LYDECKER, 425-3201.  
*Provost/Vice Chancellor:* VIRGINIA M. COOMBS, 425-3700.  
*Vice Chancellor, Administration and Finance:* VIRGIL NYLANDER, 425-3737.  
*Dean, College of Agriculture, Food and Environmental Sciences:* WILLIAM A. ANDERSON, 425-3841.  
*Dean, College of Arts and Sciences:* GORDEN HEDAHL, 425-3777.  
*Dean, College of Education and Graduate Studies:* KAREN VIECHNICKI, 425-3774.  
*Interim Director, School of Business and Economics:* GLENN POTTS, 425-3700.  
*Dean of Students:* ROGER A. BALLOU, 425-3711.  
*Director of Admissions:* ALAN TUCHTENHAGEN, 425-3500.  
*Registrar:* JUDY GEORGE, 425-3342.  
*Interim Director, Outreach Office:* NEAL PROCHNOW, 425-3256.

#### **UW-Stevens Point**

Room 213 Old Main, 2100 Main Street, Stevens Point 54481-3897  
 General Telephone: (715) 346-0123  
 Internet Address: <http://www.uwsp.edu>

*Chancellor:* THOMAS F. GEORGE, 346-2123.  
*Provost/Vice Chancellor:* WILLIAM MEYER, 346-4686.  
*Associate Vice Chancellor, Academic Programs and Grant Support Services:* DAVID STASZAK, 346-3693.  
*Assistant Chancellor, Business Affairs:* GREGORY DIEMER, 346-4028.  
*Assistant Chancellor, Student Affairs:* ROBERT TOMLINSON, 346-2481.  
*Associate Vice Chancellor, Curriculum and Program Support:* DONNA GARR, 346-3738.  
*Associate Vice Chancellor, Personnel and Budget:* ROBERT BEEKEN, 346-3710.  
*Chief Information Officer, Information Technology:* BRUCE STAAL, 346-3612.  
*Interim Assistant Vice Chancellor, University Extension:* JOAN SOSALLA, 346-4736.  
*Dean, College of Fine Arts and Communication:* GERARD MCKENNA, 346-4920.  
*Dean, College of Letters and Science:* JUSTUS PAUL, 346-4224.  
*Dean, College of Natural Resources:* VICTOR PHILLIPS, 346-4617.  
*Dean, College of Professional Studies:* JOAN NORTH, 346-3169.  
*Director, Admissions and High School Relations/Registrar:* DAVID ECKHOLM, 346-2441; Registration and Records: 346-3818.

**UW-Stout**

P.O. Box 790, Menomonie 54751-0790

General Telephone: (715) 232-1431

Internet Address: <http://www.uwstout.edu>

*Chancellor:* CHARLES W. SORENSEN, 232-2441.

*Provost/Vice Chancellor, Academic and Student Affairs:* ROBERT SEDLAK, 232-2421.

*Vice Chancellor, Administrative and Student Life Services:* DIANE MOEN, 232-1683.

*Associate Vice Chancellor, Academic and Student Affairs:* JULIE FURST-BOWE, 232-2421.

*Dean, College of Arts and Sciences:* JOHN MURPHY, 232-2596.

*Dean, College of Human Development:* JOHN WESOLEK, 232-2687.

*Dean, College of Technology, Engineering and Management:* ROBERT MEYER, 232-1251.

*Dean of Students:* PINCKNEY HALL, 232-1181.

*Associate Dean for Research:* TED KNOUS, 232-1126.

*Director of Admissions and School Relations:* CYNTHIA GILBERTS, 232-2639.

*Registrar:* JEFF KIRSCHLING, 232-2121.

**UW-Superior**

Belknap and Catlin Streets, P.O. Box 2000, Old Main Room 212, Superior 54880-4500

General Telephone: (715) 394-8101

Internet Address: <http://www.uwsuper.edu>

*Chancellor:* JULIUS E. ERLBACH, 394-8221.

*Provost:* CHARLES W. SCHELIN, 394-8447.

*Director of Admissions:* JON WOJCIECHOWSKI, 394-8396.

*Dean of Faculties:* ROSEMARY KEEFE, 394-8296.

*Registrar:* BARBARA A. ERICKSON, 394-8218.

**UW-Whitewater**

Hyer Hall, 800 West Main Street, Whitewater 53190-1790

General Telephone: (262) 472-1234

Internet Address: <http://www.uww.edu>

*Chancellor:* JOHN W. MILLER, 472-1918.

*Provost/Vice Chancellor for Academic Affairs:* DAVID J. PRIOR, 472-1672.

*Assistant Chancellor, Administrative Affairs:* JAMES W. FREER, 472-1922.

*Assistant Chancellor for Student Affairs:* BARBARA JONES, 472-1051.

*Associate Vice Chancellor for Academic Affairs:* RICHARD J. TELFER, 472-1055.

*Dean, College of Arts and Communication:* JOHN H. HEYER, 472-1221.

*Dean, College of Business and Economics:* JOSEPH S. DOMITRZ, 472-1343.

*Dean, College of Education:* JEFFREY C. BARNETT, 472-1101.

*Dean, College of Letters and Sciences:* HOWARD L. ROSS, 472-1711.

*Dean, Graduate School, Continuing Education and Summer Session:* RICHARD LEE, 472-1100.

*Executive Director of Admissions:* TORI MCGUIRE, 472-1512.

*Registrar:* JAMES STEWART, 472-1570.

**UW Colleges**

780 Regent Street, P.O. Box 8680, Madison 53708-8680

Internet Address: <http://www.uwc.edu/>*Chancellor:* WILLIAM F. MESSNER, (608) 262-1783.*Interim Provost/Vice Chancellor:* MARGARET CLEEK, (608) 263-1794.*Assistant Chancellor, Administrative Services:* CHRISTOPHER FORREST, (608) 263-1638.*Associate Vice Chancellor for Academic Affairs:* GREG LAMPE, (608) 263-1794.*Assistant Vice Chancellor for Instructional Technology:* RICHARD CLEEK, (608) 265-5764.*Registrar:* PATRICIA MCGREGOR, (608) 262-9652.*Baraboo/Sauk County:* 1006 Connie Road, Baraboo 53913-1098, (608) 356-8351,  
<http://www.baraboo.uwc.edu>*Dean:* AURAL UMHOEFER.*Barron County:* 1800 College Drive, Rice Lake 54868-2497, (715) 234-8176,  
<http://www.barron.uwc.edu>*Dean:* PAUL CHASE.*Fond du Lac:* 400 University Drive, Fond du Lac 54935-2998, (920) 929-3600,  
<http://www.fdl.uwc.edu>*Dean:* JUDY GOLDSMITH.*Fox Valley:* 1478 Midway Road, Menasha 54952-1297, (920) 832-2600,  
<http://www.fox.uwc.edu>*Dean:* JAMES PERRY.*Manitowoc:* 705 Viebahn Street, Manitowoc 54220-6699, (920) 683-4700,  
<http://www.manitowoc.uwc.edu>*Dean:* ROLAND BALDWIN.*Marathon County:* 518 South 7th Avenue, Wausau 54401-5396, (715) 261-6100,  
<http://www.uwmc.uwc.edu>*Dean:* JAMES VENINGA.*Marinette:* 750 West Bay Shore Street, Marinette 54143-4299, (715) 735-4311,  
<http://www.marinette.uwc.edu>*Dean:* SIDNEY BREMER.*Marshfield/Wood County:* 2000 West 5th Street, Marshfield 54449-0150, (715) 389-6500,  
<http://www.marshfield.uwc.edu>*Dean:* CAROL McCART.*Richland:* 1200 Highway 14 West, Richland Center 53581-1399, (608) 647-6186,  
<http://www.richland.uwc.edu>*Dean:* DION KEMPTHORNE.*Rock County:* 2909 Kellogg Avenue, Janesville 53546-5699, (608) 758-6565,  
<http://www.rock.uwc.edu>*Dean:* JANET PHILIPP.*Sheboygan:* One University Drive, Sheboygan 53081-4789, (920) 459-6600,  
<http://www.sheboygan.uwc.edu>*Dean:* RAYMOND HERNANDEZ.*Washington County:* 400 University Drive, West Bend 53095-3699, (262) 335-5200,  
<http://www.washington.uwc.edu>*Dean:* JOEL RODNEY.*Waukesha:* 1500 University Drive, Waukesha 53188-2799, (262) 521-5200,  
<http://www.waukesha.uwc.edu>*Dean:* BRAD STEWART.

**UW-Extension**

432 North Lake Street, Madison 53706-1498  
 General Telephone: (608) 262-3980  
 Internet Address: <http://www.uwex.edu>

*Chancellor:* KEVIN P. REILLY, 262-3786.

*Vice Chancellor/Provost:* MARVIN VAN KEKERIX, 262-6151.

*Assistant to the Chancellor:* JENNIFER GRONDIN, 263-7678.

*Interim Dean, Continuing Education Extension:* DAVID J. WARD, 265-9378.

*Dean, Cooperative Extension:* CARL O'CONNOR, 263-2775.

*Assistant Chancellor for Administrative and Financial Services:* ROBERT ANDERSEN, 262-4830.

*Director, Extension Communications:* BYRON KNIGHT, 263-2129.

*Director, Information Systems:* RON KRAEMER, 263-6012.

*Secretary of the Faculty/Academic Staff:* GREG WISE, 262-4387.

**Officers and Units Required by Statute**

*State Cartographer:* THEODORE KOCH, (608) 262-6852, 160 Science Hall, 550 North Park Street, Madison 53706-1491.

*State Geologist:* JAMES ROBERTSON, (608) 263-7384, Geological and Natural History Survey, 3817 Mineral Point Road, Madison 53705-5100.

*Agricultural Safety and Health Center:* MARK PURSCHWITZ, *director*, (608) 262-1180, 230 Agricultural Engineering Building, 460 Henry Mall, Madison 53706.

*Center for Environmental Education:* RANDY CHAMPEAU, *director*, (715) 346-4973, 110 College of Natural Resources, 403 Learning Resources Center, Stevens Point 54481.

*Geological and Natural History Survey:* JAMES ROBERTSON, *state geologist*, (608) 262-1705, 3817 Mineral Point Road, Madison 53705-5100.

*Area Health Education Center:* NANCY SUGDEN, *director*, (608) 263-4927 or 263-1712, 203 Bradley Memorial, 1300 University Avenue, Madison 53706.

*Wisconsin State Herbarium:* PAUL E. BARRY, *director*, (608) 262-2792, Department of Botany, Room 132, Birge Hall, Madison 53706-1381.

*Psychiatric Research Institute:* NED KALIN, *director*, (608) 263-6079, 6001 Research Park Boulevard, Madison 53719.

*Robert M. La Follette Institute of Public Affairs:* JOHN F. WITTE, *director*, (608) 262-3581, 1225 Observatory Drive, Madison 53706.

*State Soils and Plant Analysis Laboratory:* SHERRY COMBS, *director*, (608) 262-4364, 5711 Mineral Point Road, Madison 53705.

*Institute for Excellence in Urban Education:* ED LEVIN, *assistant to the dean*, (414) 229-6779 or (414) 229-4181, School of Education, P.O. Box 413, UW-Milwaukee, Milwaukee 53201.

*Center for Urban Land Economics Research:* KERRY VANDELL, *director*, (608) 262-5800, 975 University Avenue, Room 5262, Grainger Hall, Madison 53706.

*School of Veterinary Medicine:* DARYL BUSS, *dean*, (608) 263-6716, 2015 Linden Drive West, Madison 53706-1102.

**Agency Responsibility:** The prime responsibilities of the University of Wisconsin System are teaching, public service, and research. The system provides postsecondary academic education for almost 158,000 students, including over 125,000 full-time undergraduates.

**Organization:** The UW System consists of 13 degree-granting universities, 13 two-year colleges, and statewide extension programs. The UW-Madison and the UW-Milwaukee offer bachelor's, master's, doctoral, and professional degrees. Eleven other universities in the UW System offer associate, bachelor's, and master's degree programs: UW-Eau Claire, UW-Green Bay, UW-La Crosse, UW-Oshkosh, UW-Parkside, UW-Platteville, UW-River Falls, UW-Stevens Point, UW-Stout, UW-Superior, and UW-Whitewater.

The UW Colleges serve local and commuter students by providing freshman-sophomore university course work that is transferable to degree-granting campuses. In addition, the colleges offer general education associate degrees. College faculty and staff are employed by the UW System, but UW College campuses and buildings are owned by the municipalities and/or counties in which they are located.

The UW-Extension provides noncredit and for-credit classroom and distance learning courses, as well as continuing education and a wide range of public service programs.

The 17-member Board of Regents of the University of Wisconsin System establishes policies to govern the system and plans for the future of public higher education in Wisconsin. Two members serve *ex officio*; the student member serves a 2-year term; and the other 14 members serve staggered 7-year terms. The governor may not appoint a student member from the same institution in any 2 consecutive terms.

The board appoints the president of the UW System, the chancellors of the 13 universities, the chancellor of the UW-Extension, the chancellor of the UW Colleges, and the deans of the 13 UW Colleges. All appointees serve at the pleasure of the board. The board also sets admission standards, reviews and approves university budgets, and establishes the regulatory framework within which the individual units operate.

**Unit Functions:** The president of the University of Wisconsin System has full executive responsibility for system operation and management. This officer carries out the duties prescribed by statute; implements the policies established by the board of regents; manages and coordinates the system's administrative offices; and exercises fiscal control through budget development, management-planning programs, and coordination and evaluation of the academic programs on all campuses.



*Both adults and kids learn from the demonstration of prairie burn equipment during the UW Science Education Outreach "Whys and Wows" program at Green Bay's Neville Museum. (UW-Madison University Communications)*

Each chancellor serves as executive head of a particular campus or program, administers board policies under the direction of the system's president, and is accountable to the board of regents. Subject to board policy, the chancellors, in consultation with their faculties, design curricula and set degree requirements; determine academic standards and establish grading systems; define and administer institutional standards for faculty peer evaluation; screen candidates for appointment, promotion, and tenure; administer auxiliary services; and control all funds allocated to or generated by their respective programs.

**History:** Today's UW System is the product of the 1971 merger of two existing university boards – the Board of Regents of the University of Wisconsin and the Board of Regents of the State Universities – and the institutions they governed.

From earliest times, Wisconsin lawmakers recognized the need for a tax-supported university. The territorial legislature passed laws in 1836, 1838, and 1839 regarding establishment and location of a university, and Article X, Section 6, of the state constitution ratified in 1848, provided for a state university at or near the seat of state government. Chapter 20, Laws of 1848, which implemented the constitutional provision, delegated university administration to a board of regents and classes began in 1849. Critical to the university's early development was Chapter 114, Laws of 1866, which reorganized the board of regents, expanded its authority, and authorized the governor to appoint the regents. The 1866 reorganization provided for instruction in agriculture on the Madison campus and an experimental farm, thereby making the university eligible, as Wisconsin's land grant institution, to receive the proceeds derived from sale of lands granted by the federal government to support agricultural education and research.

The State Universities originated with Chapter 82, Laws of 1857, which provided funds for a system of 2-year normal schools to train teachers and created the Board of Regents of Normal Schools. The first normal school opened at Platteville in 1866 and the ninth 50 years later at Eau Claire. In 1929, the 9 normal schools became "state teachers colleges" and were authorized to offer baccalaureate degree programs. They were renamed state colleges in 1951 and state universities in 1964. Chapter 75, Laws of 1967, renamed the governing body, designating it the Board of Regents of State Universities.

Chapter 100, Laws of 1971, mandated the merger of Wisconsin's two systems of public higher education to form the University of Wisconsin System. Chapter 335, Laws of 1973, recreated Chapter 36 of the statutes and provided a single statutory charter to govern public higher education in Wisconsin. The University of Wisconsin Colleges, which were previously called UW Centers, were renamed by 1997 Wisconsin Act 237.

#### ORGANIZATION CREATED BY STATUTE WITHIN THE UNIVERSITY OF WISCONSIN SYSTEM

##### LABORATORY OF HYGIENE

*Laboratory of Hygiene Board:* JOHN TORPHY (designated by president of UW System), JOHN CHAPIN (designated by secretary of health and family services), MARY JO KOPECKY (designated by secretary of natural resources), SUSAN BUROKER (designated by secretary of agriculture, trade and consumer protection); ROBERT BAGLEY (local health department representative); DEBORAH TURSKI (physician representing clinical laboratories); EDWARD F. TREICK (representing private environmental testing laboratories); MICHAEL CAVANAUGH (representing occupational health laboratories); JEFFREY JENTZEN (medical examiner or coroner); JAMES C. CLAWSON, PAUL A. HARRIS. Nonvoting member: RONALD H. LAESSIG (director, Laboratory of Hygiene). (All except *ex officio* officers or designees are appointed by governor.)

*Director:* RONALD H. LAESSIG.

*Medical Director:* DANIEL F. KURTYCZ.

*Associate Director:* CINDY J. MCINTOSH.

**Mailing Address:** 465 Henry Mall, Madison 53706-1578; 2601 Agriculture Dr., Madison 53707-7996 (Environmental Health Division).

**Telephones:** (608) 262-1293; Customer service: (800) 442-4618; Administrative office: (608) 262-3911; Wisconsin Occupational Health Laboratory: (608) 224-6210, (800) 446-0403; Profi-

ciency Testing Program: (608) 833-1770, (800) 462-5261; Environmental Health Division: (608) 224-6202.

**Division Fax:** (608) 262-3257; Environmental Health Division Fax: (608) 224-6213.

**Publications:** Newborn Screening Newsletter; Occupational Health Newsletter; *Results* (WSLH Newsletter); annual report; reference manual; assorted special publications.

**Number of Employees:** 298.65.

**Total Budget 1999-2001:** \$52,026,800.

**Statutory References:** Sections 15.07 (1), 15.915 (2), and 36.25 (11).

**Agency Responsibility:** The Laboratory of Hygiene, headed by a director appointed by the UW Board of Regents, provides complete laboratory services for appropriate state agencies and local health departments in the areas of water quality, air quality, public health, and contagious diseases. It performs laboratory tests and consultation for physicians, health officers, local agencies, private citizens, and resource management officials to prevent and control diseases and environmental hazards. As part of the UW-Madison, the laboratory provides facilities for teaching and research in the fields of public health and environmental protection.

The laboratory operates under the direction and supervision of the Laboratory of Hygiene Board, composed of 11 members, 7 of whom are appointed by the governor to serve 3-year terms.

**History:** Chapter 344, Laws of 1903, created the Laboratory of Hygiene at the University of Wisconsin to examine water supplies, investigate contagious and infectious diseases, and function as the official laboratory of the State Board of Health. The executive branch reorganization act of 1967 extended the laboratory's services to the Department of Natural Resources.

#### INDEPENDENT UNITS ATTACHED FOR BUDGETING, PROGRAM COORDINATION, AND RELATED MANAGEMENT FUNCTIONS BY SECTION 15.03 OF THE STATUTES

#### ENVIRONMENTAL EDUCATION BOARD

*Environmental Education Board:* RICK KOZIEL (nature center/zoo representative), *chairperson*; SENATORS BURKE, COWLES; REPRESENTATIVES KEDZIE, MILLER; SHELLEY LEE (designated by superintendent of public instruction), AL STENSTRUP (designated by secretary of natural resources), ROBIN HARRIS (designated by president, UW System), JAMES GIBSON (designated by director, Technical College System Board); PATRICIA A. MARINAC (K-12 environmental educators' representative), WILLIAM BUCKLEY (conservation and environmental organizations representative), DEBBY BLOMBERG (business and industry representative), SABRINA GENTILE (agricultural representative), WILLIAM NEUHAUS (labor representative), RICHARD WILKE (higher education institutions faculty representative). (Unless otherwise designated, members are appointed by president of UW System.)

**Mailing Address:** 110B College of Natural Resources, UW-Stevens Point, Stevens Point 54481.

**Telephone:** (715) 346-3805.

**Internet Address:** <http://www.uwsp.edu/cnr/weeb>

**Statutory References:** Sections 15.915 (6) and 115.375.

**Agency Responsibility:** The Environmental Education Board awards matching grants to public agencies and nonprofit corporations to develop and distribute environmental education programs. The board consults with the state's educational agencies, the Department of Natural Resources and other state agencies to identify needs and establish priorities for environmental education. Its 15 members include 5 representatives of nongovernmental interest groups who are appointed to serve 3-year terms. The senate and assembly members must represent the majority and the minority parties in their respective houses. The board was created by 1989 Wisconsin Act 299 and was transferred from the Department of Public Instruction to the UW System by 1997 Wisconsin Act 27.

### PHARMACY INTERNSHIP BOARD

*Pharmacy Internship Board:* CYNTHIA BENNING, SUE SUTTER (members of Pharmacy Examining Board appointed by examining board); NATHAN KANOUS, CONNIE KRAUS (UW School of Pharmacy faculty members appointed by dean); ANN EBERT, MARY JANE JONES (appointed by Pharmacy Society of Wisconsin); vacancy (public member appointed by governor with senate consent).

*Director:* PAUL ROSOWSKI.

**Mailing Address:** University of Wisconsin-Madison, 777 Highland Avenue, Madison 53706.

**Telephone:** (608) 262-3717.

**Fax:** (608) 262-3397.

**Internet Address:** <http://www.pharmacy.wisc.edu/pib>

**Statutory References:** Sections 15.08, 15.915 (3), and 36.25 (20).

**Agency Responsibility:** The Pharmacy Internship Board sets standards for internship sites and preceptors, determines duration of internships, approves school-sponsored experience programs for internship credit, and licenses interns. The board has 7 members, and, except for those appointed by the Pharmacy Examining Board, they serve staggered 5-year terms. Board members must be state residents, and they cannot serve more than two consecutive terms. No member may be an officer, director, or employee of a private organization which promotes or furthers the pharmacy profession. The board appoints a full-time director of pharmacy internship from outside the classified service.

**History:** Originally created by Chapter 351, Laws of 1965, as the Pharmacy Internship Commission, the agency was renamed a board and placed under the Department of Regulation and Licensing by Chapter 75, Laws of 1967. Chapter 34, Laws of 1979, attached the board to the UW System.

### VETERINARY DIAGNOSTIC LABORATORY BOARD

*Veterinary Diagnostic Laboratory Board:* GLEN GILBERT (animal agriculture industry representative), *chairperson*; JAMES HARSDORF (secretary of agriculture, trade and consumer protection), JOHN TORPHY (designated by chancellor of UW-Madison), DARYL BUSS (dean of the UW-Madison School of Veterinary Medicine), JACK SHERE (veterinarian employed by the federal government); BERWYN CADMAN, GLEN KOLB (veterinarians); LLOYD HOLTERMAN, MARK RIECHERS (livestock producers); BERNARD ESTERDAY (laboratory interim director) (nonvoting member). (All except *ex officio* members are appointed by governor.)

**Mailing Address:** 6101 Mineral Point Road, Madison 53705-4494.

**Telephone:** (608) 262-5432.

**Fax:** (608) 262-5005.

**Statutory References:** Sections 15.195 (1) and 36.58.

**Agency Responsibility:** The Veterinary Diagnostic Laboratory Board oversees the Veterinary Diagnostic Laboratory, which provides animal health testing and diagnostic services on a state-wide basis for all types of animals. The board has 10 members, 6 of whom are appointed by the governor to serve staggered 3-year terms. The board prescribes policies for the laboratory's operation, develops its biennial budget, and sets fees for laboratory services. It also consults with the UW-Madison chancellor on the appointment of the laboratory director.

**History:** Both the board and the laboratory were created by 1999 Wisconsin Act 107, which transferred the laboratory's facilities and employees from the Department of Agriculture, Trade and Consumer Protection to the University of Wisconsin System, effective July 1, 2000.

---

**Department of  
VETERANS AFFAIRS**

*Board of Veterans Affairs:* JOHN WILLIAM CROWLEY, *chairperson*; DONALD L. HEILIGER, *vice chairperson*; BERNARD BOYLE, TED G. DEMICCHI, RICHARD E. MARBES, HERON A. VAN GORDEN, vacancy. (All are veterans appointed by governor with senate consent.)

**Secretary of Veterans Affairs:** **RAYMOND G. BOLAND**, 266-1315, ray.boland@

*Deputy Secretary:* ROBERT A. COCROFT, 266-2256, robert.cocroft@

*Executive Assistant:* WILLIAM KLOSTER, 266-0644, william.kloster@

*Financial Officer:* JOHN F. TRIMBELL, 266-1843, john.trimbell@

*Legal Counsel:* JOHN ROSINSKI, 266-7916, john.rosinski@

*Policy Initiatives Advisor:* LARRY KLEINSTEIBER, 264-6094, larry.kleinsteiber@

*Policy, Planning and Budget, Office of:* KENNETH R. ABRAHAMSEN, *director*, 266-0117, ken.abrahamsen@

**Mailing Address:** P.O. Box 7843, Madison 53707-7843.

**Location:** 30 West Mifflin Street, Madison.

**Telephone:** (608) 266-1311, toll free: (800) 947-8387.

**Fax:** (608) 264-7616.

**Internet Address:** <http://dva.state.wi.us>

Address e-mail by combining the user ID and the state extender: [userid@dva.state.wi.us](mailto:userid@dva.state.wi.us)

**Number of Employees:** 897.30.

**Total Budget 1999-2001:** \$295,504,200.

**Statutory References:** Section 15.49; Chapter 45.

*Administration, Division of:* E. DAVID LARSEN, *administrator*, 266-3947, david.larsen@, Fax: 264-6089.

*Administrative Services, Bureau of:* JOYCE K. KREY, *director*, 266-3344, joyce.krey@

*Fiscal Services, Bureau of:* ROGER L. GRAHAM, *director*, 266-3916, roger.graham@

*Information Systems, Bureau of:* ANTHONY J. CAPPOZZO, *director*, 267-7207, tony.cappozzo@

*Veterans Home, Division of:* STEPHEN T. HANDRICH, *administrator/commandant*, (715) 258-4241, steve.handrich@; MICHAEL W. STEAD, *deputy commandant*, (715) 258-4251, michael.stead@; CHRIS WROLSTAD, *adjutant*, (715) 258-4249 chris.wrolstad@; Wisconsin Veterans Home, King 54946-0600, Fax: (715) 258-5736; STEVEN STEAD, *deputy commandant*, (262) 878-5668, steve.stead@, Wisconsin Veterans Home, 21425 Spring St., Union Grove 53182.

*Activities Services, Bureau of:* CATHY LEAVERTON, (715) 258-1486, cathy.leaverton@

*Admissions and Discharges, Bureau of:* MARIAN BOUSHLEY, (715) 258-4252, marian.boushley@

*Dietary Services, Bureau of:* vacancy.

*Engineering/Physical Plant, Bureau of:* DOUG TYNDALL, (715) 258-4253, doug.tyndall@

*Financial Services, Bureau of:* MARK MCCARTY, (715) 258-4248, mark.mccarty@

*Materials Management, Bureau of:* vacancy, (715) 258-4242.

*Medical Services, Bureau of:* PAUL DRINKA, (715) 258-4240, paul.drinka@

*Nursing Services, Bureau of:* MARY TENANT, (715) 258-5586, mary.tenant@

*Personnel Services, Bureau of:* NEAL SPRANGER, (715) 258-4244, neal.spranger@

*Public Information/Volunteer Coordinator:* RICH CALCUT, (715) 258-4247, rich.calcut@

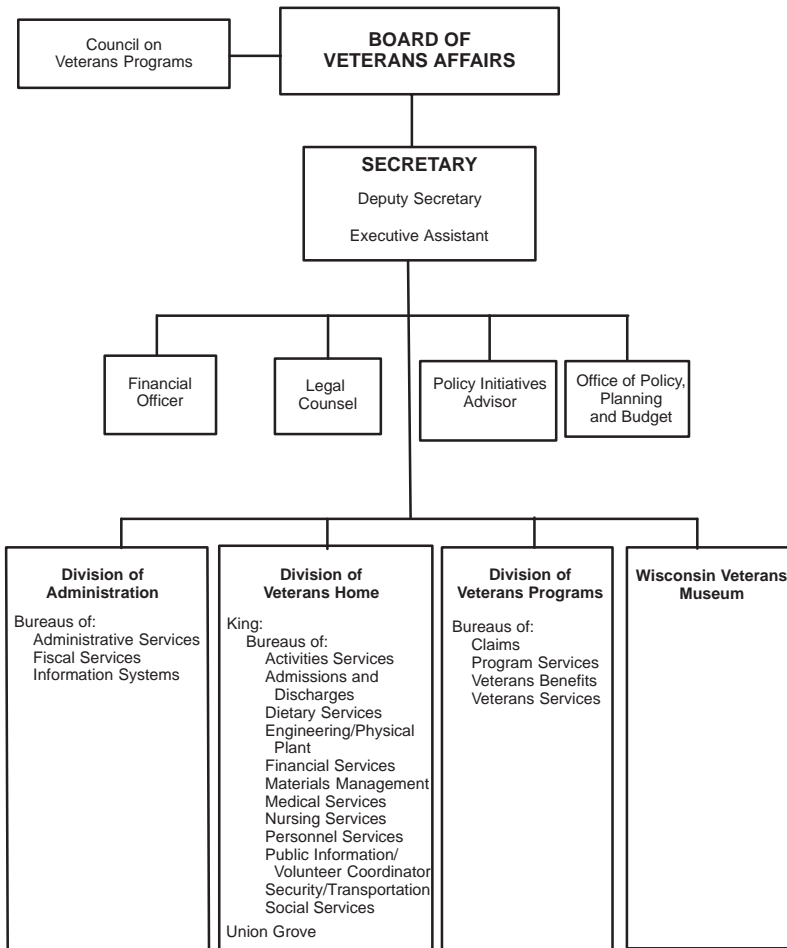
*Security/Transportation, Bureau of:* RON WOODS, (715) 258-1485, ron.woods@

*Social Services, Bureau of:* SHERRY KELLEY, (715) 258-1660, sherry.kelley@

*Veterans Programs, Division of:* RICHARD G. DEMOYA, *administrator*, 266-1378, rick.demoya@, Fax: 267-0403.

*Claims, Bureau of:* MELVIN E. HALL, *director*, VA Regional Office, Building 6, Room B206, 5000 West National Avenue, Milwaukee 53295-0001, (414) 382-5207, mel.hall@

## DEPARTMENT OF VETERANS AFFAIRS



Unit attached for administrative purposes under Sec. 15.03: Educational Approval Board

*Program Services, Bureau of:* DENNIS L. NELSON, *director*; 266-8951, dennis.nelson@

*Veterans Benefits, Bureau of:* LAWRENCE E. DEWANE, *director*; 266-1309, larry.dewane@

*Veterans Services, Bureau of:* THOMAS L. GILBERT, *director*; 266-2648, tom.gilbert@

*Wisconsin Veterans Museum:* RICHARD H. ZEITLIN, *director*; 266-1009, richard.zeitlin@

**Publications:** *The Courier*; *CVSO Digest*; *WDVA Update*; *Wisconsin's Role in the Civil War*; *Wisconsin's Role in World War II*; brochures on the Wisconsin Veterans Museum (Madison), the Wisconsin Veterans Home (King), and state veterans' benefits and eligibility requirements.

**Agency Responsibility:** The Department of Veterans Affairs provides educational and economic assistance to eligible veterans of the U.S. Armed Forces and their dependents through loan and grant programs. It also operates the Wisconsin veterans homes at King and Union Grove, the

Wisconsin Veterans Museum in Madison, the Southern Wisconsin Veterans Memorial Cemetery at Union Grove, and the Northern Wisconsin Veterans Memorial Cemetery near Spooner.

The department currently serves an estimated 473,300 veterans living in Wisconsin, including 46,600 Gulf War veterans, 148,200 Vietnam War veterans, 72,900 Korean War veterans, and 105,100 World War II veterans.

**Organization:** The department is headed by a board of 7 members who serve staggered 6-year terms. All board members must be veterans, as defined by statute, and at least 2 must be Vietnam War veterans. Administrative powers and duties are exercised by the department secretary, who is appointed by the board and serves at its pleasure.

**Unit Functions:** The *Division of Administration* oversees data processing and fiscal management, systems analysis, and personnel benefits and training.

The *Division of Veterans Home* administers the state's facilities for veterans who are permanently incapacitated due to age or physical disability and those unable to find substantially gainful employment may be admitted if they meet service and residency criteria. Applicants must apply their income and resources to the cost of their care as required by Medicaid eligibility standards. The spouses of eligible veterans may also be admitted.

The Wisconsin Veterans Home at King serves approximately 740 members. It includes licensed skilled nursing care buildings, cottages for married couples, and the Wisconsin Veterans Memorial Cemetery. Residents receive complete medical and nursing care, along with therapeutic treatments and social services.

The Wisconsin Veterans Home at Union Grove provides community-based residential facilities to serve veterans and their spouses who do not require skilled nursing home care but do need assisted-living services. A 120-bed skilled nursing care facility is planned for the complex and additional services, such as adult care, will be provided.

The *Division of Veterans Programs* administers the various loan and grant programs that the state offers Wisconsin veterans and supervises the Veterans Trust Fund, which supports the department's grants and loans programs, the claims service, and the Wisconsin Veterans Museum. It assists Wisconsin veterans who have claims with the federal government and operates the Southern Wisconsin Veterans Memorial Cemetery and the Northern Wisconsin Veterans Memorial Cemetery.

The home loan program covers 2 types of loans. The Primary Home Loan Program provides 30-year, first mortgage loans at a fixed rate of interest for the purchase or construction of private housing by qualified Wisconsin veterans, and it is financed principally through self-amortizing, general obligation state bonds. The Home Improvement Loan Program covers repairs, alterations, and renovations of a veteran's principal residence. The division also inspects and appraises real estate that is the subject of loan applications.

The state funds personal loans for veterans and supports education and subsistence grant programs. The Personal Loan Program permits eligible veterans to borrow for education, business purposes, debt consolidation, and for other qualifying purposes. Part-time study grants are available to all eligible Wisconsin veterans or eligible persons who were dependents of deceased veterans. The grants provide reimbursement of tuition and fees upon satisfactory completion of part-time study or correspondence courses from approved public and private schools in Wisconsin. Veterans recently discharged from active duty may apply for the Tuition and Fees Reimbursement Grant, which provides reimbursement for successful completion of undergraduate courses in the UW System or courses in the Wisconsin Technical College System. The Retraining Grant Program provides up to \$3,000 to recently unemployed veterans who demonstrate financial need while being enrolled in a vocational or other job training program that is expected to lead to employment.

Grants are also available to provide temporary, emergency financial aid to veterans or their dependents. This subsistence aid may be provided only when there is illness or disability that causes loss of income, and the grant must be used for essential budgetary requirements. In the case of veterans receiving assistance for Post-Traumatic Stress Disorder, loss of income is not a determining factor for eligibility.



*To memorialize Civil War veterans, the Department of Veterans Affairs stages “Talking Spirits”, a tour of Madison’s Forest Hill Cemetery. Amid the graves of 140 Confederate prisoners of war, “Alice Whiting Waterman”, who was a Madisonian from Louisiana, tells how she cared for “her boys” after their deaths at Camp Randall, where today’s UW stadium stands. She tended their graves for over three decades until her own death. (Department of Veterans Affairs)*

The Veterans Assistance Program operates veterans assistance centers in Milwaukee, Tomah, the Veterans Home at King, and the Southern Wisconsin Center near Union Grove. Through the centers, homeless veterans and veterans at risk of becoming homeless receive education, job training, and rehabilitative services to enable them to obtain steady employment and affordable housing. The program is a joint effort of the Wisconsin Department of Veterans Affairs, the U.S. Department of Veterans Affairs, and community-based agencies.

Within the Division of Veterans Programs, the Bureau of Claims, which is located at the U.S. Department of Veterans Affairs regional office in Milwaukee, assists Wisconsin veterans with federal claims for compensation, pension, education, back pay, or any other problems arising from military service.

The *Wisconsin Veterans Museum* in Madison is dedicated to Wisconsin veterans of all wars. It houses and exhibits artifacts related to Wisconsin’s participation in U.S. military actions from the Civil War to the present and presents programs to the public on the history of Wisconsin’s war efforts.

**History:** Legislation to benefit Wisconsin veterans dates back to the post-Civil War era. Most of the enactments between the Civil War and World War I were concerned with providing relief for destitute veterans and their families. In 1887, the Grand Army of the Republic (GAR), the

prominent Civil War veterans' organization, founded the Grand Army Home at King, supported by private donations and federal and state subsidies. Now called the Wisconsin Veterans Home, the institution was first operated by the GAR and later by a state board and the adjutant general's office. Further recognition of Civil War veterans came in 1901, when the legislature established a Grand Army of the Republic headquarters and museum in the State Capitol. In 1993, the state opened the Wisconsin Veterans Museum in a separate building on the Capitol Square. The Southern Wisconsin Veterans Home, authorized in 1999 Wisconsin Act 9, opened in 2001.

After World War I, the 1919 Legislature granted a cash bonus, or alternatively an education bonus, to soldiers who fought in the war. It also created a fund for the relief of sick, wounded, or disabled veterans, administered by the Service Recognition Board and later its successor, the Soldiers' Rehabilitation Board. Other legislation between World Wars I and II provided funds for hospitalization, memorials, and free courses through the University of Wisconsin-Extension.

The creation of the Department of Veterans Affairs by Chapter 580, Laws of 1945, brought all veterans programs under a single agency. The department absorbed the Grand Army Home, the GAR Memorial Hall, the veterans claim services, and the Soldiers' Rehabilitation Board. The department was assigned the economic aid, hospital care, and education grants programs. It also took over 3 segregated veterans funds that were combined into the Veterans Trust Fund in 1961.

Two major new programs relating to housing and education were implemented after World War II. Beginning with legislation in 1947, programs were established to help veterans finance home loans through a trust fund. The state supreme court declared earmarking liquor tax moneys for the fund unconstitutional under the internal improvements clause, but a constitutional amendment, approved by the voters in 1949, resolved the problem. Chapter 627, Laws of 1949, authorized loans to qualified veterans for a portion of the value of their housing. The legislature converted this program to a second mortgage home loan program in 1973, when it established the Primary Home Loan Program that is financed with general obligation bonds. The state's use of general obligation bonding to offer home loans to veterans raised constitutional concerns. The legislature responded by proposing an amendment to the Wisconsin Constitution, which the voters ratified in April 1975.

### Statutory Council

**Council on Veterans Programs:** WILLIAM HUSTAD (Wisconsin Vietnam Veterans, Inc.), *chairperson*; JESSE HARO (Catholic War Veterans of the U.S.A.), *vice chairperson*; ITALO BENSONI (Veterans of Foreign Wars), *secretary*; JOHN SCHURRER (American Legion), KEN KUEHNL (Disabled American Veterans), PAUL A. BIALK (Marine Corps League), RUSS ALSTEEN (Navy Club of the U.S.A.), JACK MOLNAR (AMVETS), vacancy (Veterans of World War I of the U.S.A., Inc.), WALTER PETERSON (American Ex-Prisoners of War), vacancy (Vietnam Veterans Against the War), JIM RIESENBERG (Vietnam Veterans of America), PAUL WEPRINSKY (Jewish War Veterans of the U.S.A.), DELMAR GRIEBEL (Polish Legion of American Veterans), WILLIAM SIMS (National Association for Black Veterans, Inc.), LOU GOODSTEIN (Army and Navy Union of the United States of America), CLIFTON SORENSON (Wisconsin Association of Concerned Veterans Organizations), PHYLLIS PERK (United Women Veterans, Inc.), WALTER STENAVICH (U.S. Submarine Veterans of World War II), FELMERS O. CHANEY (Federation for Culturally Diverse Veterans), CLARENCE STOEL (Military Order of the Purple Heart), THOMAS H. WYNN (American Red Cross), ROBERT STONE (County Veterans Service Officers Association). (All are appointed by their respective organizations.)

The Council on Veterans Programs studies and presents policy alternatives and recommendations to the Board of Veterans Affairs. It is comprised of representatives appointed for one-year terms by organizations that have a direct interest in veterans' affairs. The council was created by Chapter 443, Laws of 1943, and its composition and duties are prescribed in Sections 15.497 and 45.35 (3d) of the statutes.

INDEPENDENT BOARD ATTACHED FOR BUDGETING, PROGRAM COORDINATION, AND  
RELATED MANAGEMENT FUNCTIONS

**EDUCATIONAL APPROVAL BOARD**

*Members:* RICHARD L. BERG, RAYMOND G. BOLAND, LEROY E. CONNOR, JR., GEORGIANA GIESE,  
GENE KUSSART, JON E. LITSCHER, DELORA NEWTON (appointed by governor).

*Executive Secretary:* vacancy, 267-7733.

**Mailing Address:** 131 West Wilson Street, Room 904, Madison 53703.

**Telephone:** (608) 266-1996.

**Fax:** (608) 264-8477.

**Publications:** Annual Report; Approving Programs for Veterans Benefits; Licensing Your School; Roles and Responsibilities; A Wisconsin Directory of For-Profit Postsecondary Schools.

**Number of Employees:** 8.00.

**Total Budget 1999-2001:** \$1,262,600.

**Statutory References:** Sections 15.495 (1) and 45.54.

**Agency Responsibility:** The Educational Approval Board must approve all postsecondary schools and courses of instruction that educate U.S. Armed Forces veterans and war orphans who receive assistance from the federal government. It protects the public by inspecting and approving private for-profit postsecondary schools operating in Wisconsin. In addition, the board approves and licenses in-state nonprofit postsecondary educational institutions incorporated after January 1, 1992, and all out-of-state nonprofit colleges that have a Wisconsin location or offer correspondence courses to state residents.

The board consists of not more than 7 members who serve at the pleasure of the governor and represent state agencies and others interested in educational programs. It employs the executive secretary and other staff from the classified service. Originally formed by order of the governor in 1944, the legislature created the agency in Chapter 137, Laws of 1953, as the Governor's Educational Advisory Committee to approve and supervise schools and educational courses that trained veterans under various federal laws. A 1957 law (Chapter 438) directed the committee to certify those private vocational schools that offered adequate courses and to prevent fraud and misrepresentation. Chapter 568, Laws of 1963, gave the committee responsibility for licensing agents of private vocational schools, and Chapter 595, Laws of 1965, renamed it the Educational Approval Council. It was renamed the Educational Approval Board and attached to the Department of Public Instruction by Chapter 214, Laws of 1967. The board was attached to the Board of Vocational, Technical and Adult Education by Chapter 125, Laws of 1971.

The Educational Approval Board was inadvertently repealed by 1995 Wisconsin Act 27, but it was continued as the Educational Approval Council in Executive Order 283. The legislature recreated the board in 1997 Wisconsin Act 27 and attached it to the Higher Educational Aids Board. In 1999 Wisconsin Act 9, the board was attached to the Department of Veterans Affairs.

---

**Department of  
WORKFORCE DEVELOPMENT**

**Secretary of Workforce Development: JENNIFER REINERT**, 266-7552, [dwdsec@](mailto:dwdsec@)

*Deputy Secretary:* RICHARD WEGNER, 261-6715, [wegneri@](mailto:wegneri@)

*Executive Assistant:* JENNIFER NOYES, 261-9458, [noyesje@](mailto:noyesje@)

*Legal Counsel:* HOWARD I. BERNSTEIN, 266-9427, [bernsho@](mailto:bernsho@)

*Legislative Liaison:* KIMBERLY MARKHAM, 266-3200, [markhki@](mailto:markhki@)

*Communications Officer:* RACHEL BIITTNER, 266-8710, [biitra@](mailto:biitra@)

*Office of Organizational Management:* JACQUIE PIRAINO, 266-3804, [piraij@](mailto:piraij@)

*Office of Internal Audit and Performance Review:* MAUREEN HLAVACEK, 261-4423, [hlavama@](mailto:hlavama@)

**Mailing Address:** P.O. Box 7946, Madison 53707-7946.

**Location:** 201 East Washington Avenue, Madison.

**Telephone:** (608) 266-7552.

**Fax:** (608) 266-1784.

**Internet Address:** <http://www.dwd.state.wi.us>

**Publications:** Contact individual divisions for publications.

**Number of Employees:** 2,384.95.

**Total Budget 1999-2001:** \$2,273,985,700.

**Statutory References:** Sections 15.22, 15.223, 15.225, and 15.227; Chapters 49, 102-106, 108, 109, and 111.

Address e-mail by combining the user ID and the state extender: [userid@dwd.state.wi.us](mailto:userid@dwd.state.wi.us)

*Administrative Services Division:* LARRY STUDESVILLE, *administrator*, 261-4599, [studela@](mailto:studela@); ARTHUR ZOELLNER, *assistant to the administrator*, 266-7532, [zoella@](mailto:zoella@); GREGORY R. SMITH, *assistant to the administrator*, 261-2138, [smithgr@](mailto:smithgr@)

*Facilities Management, Bureau of:* JEANNE FREY, *director*, 266-1777, [freyj@](mailto:freyj@)

*Finance, Bureau of:* KIPP SONNENTAG, *director*, 266-7272, [kipp.sonnentag@](mailto:kipp.sonnentag@)

*Human Resource Services, Bureau of:* WILLIAM F. KOMAREK, *director*, 266-6496, [bill.komarek@](mailto:bill.komarek@)

*Information Technology Services, Bureau of:* VINNIE THOUSAND, *director*, 266-5588, [thousv@](mailto:thousv@)

*Procurement, Bureau of:* KAREN AASEN, *director*, 266-3130, [aasenka@](mailto:aasenka@)

*Strategic Planning and Budget, Bureau of:* THOMAS K. SMITH, *director*, 266-7895, [smitht@](mailto:smitht@)

*Equal Rights Division:* J. SHEEHAN DONOGHUE, *administrator*, 266-0946, [donogs@](mailto:donogs@);

Division TTY: 264-8752.

*Civil Rights, Bureau of:* LEANNA WARE, *director*, 266-1997, [warele@](mailto:warele@)

*Labor Standards, Bureau of:* ROBERT ANDERSON, *director*, 266-3345, [anderro@](mailto:anderro@)

*Unemployment Insurance, Division of:* BRUCE C. HAGEN, *administrator*, 261-2266, [hagenb@](mailto:hagenb@); ALBERT J. JALOVIAK, *deputy administrator*, 266-8211, [jalova@](mailto:jalova@)

*Benefit Fraud Operations, Bureau of:* PHILIP J. KLUN, *acting director*, 266-3261, [klunp@](mailto:klunp@)

*Benefit Operations, Bureau of:* CAROL LAUDENBACH, *director*, 267-9543, [laudec@](mailto:laudec@)

*Legal Affairs, Bureau of:* GREGORY A. FRIGO, *director*, 267-1406, [frigogr@](mailto:frigogr@)

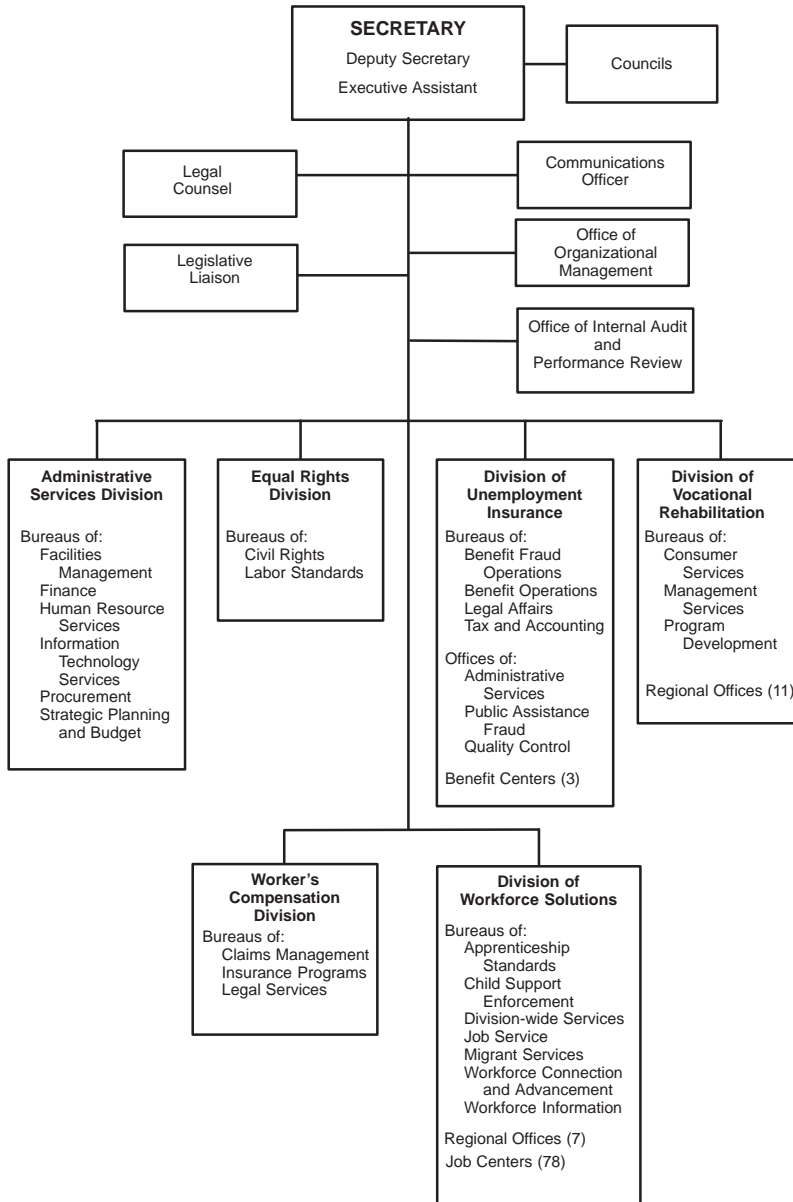
*Tax and Accounting, Bureau of:* MARY ANDERSON, *director*, 266-3177, [anderma@](mailto:anderma@)

*Administrative Services, Office of:* BOB WHITAKER, *director*, 267-7743, [whitab@](mailto:whitab@)

*Public Assistance Fraud, Office of:* ERROL A. WELCH, *supervisor*, 266-6845, [welcher@](mailto:welcher@)

*Quality Control, Office of:* JOHN MAND, *director*, 266-7535, [mandj@](mailto:mandj@)

**DEPARTMENT OF WORKFORCE DEVELOPMENT**



Units attached for administrative purposes under Sec. 15.03: Labor and Industry Review Commission  
 Wisconsin Conservation Corps Board  
 Governor's Work-Based Learning Board

*Benefit Centers:*

*Madison:* Initial claims: (608) 232-0678; Employee inquiries: (608) 232-0824; Employer inquiries: (608) 232-0633.

*Milwaukee:* Initial claims: (414) 438-7700; Employee inquiries: (414) 438-7713; Employer inquiries: (414) 438-7705.

*Statewide:* Initial claims: (800) 822-5246; Employee inquiries: (800) 494-4944; Employer inquiries: (800) 247-1744.

*Vocational Rehabilitation, Division of:* CHARLENE DWYER, *administrator*, (608) 243-5603, [dwyerch@](mailto:dwyerch@), 2917 International Lane, Suite 300, Madison 53707-7852; TERRY SCHNAPP, *deputy administrator*, (608) 243-5605, [schnat@](mailto:schnat@); Division TTY: (608) 243-5601.

*Consumer Services, Bureau of:* MANUEL LUGO, *director*, 243-5614, [lugoma@](mailto:lugoma@)

*Management Services, Bureau of:* GERALD GUENTHER, *director*, 243-5622, [guentje@](mailto:guentje@)

*Program Development, Bureau of:* CLEO ELIASON, 243-5690, [eliascl@](mailto:eliascl@)

*Regional Offices:*

*Eau Claire:* 221 W. Madison Street, Suite 140C, Eau Claire 54703-4404, (715) 836-4263.

*Fond du Lac:* 820 South Main Street, Fond du Lac 54935-5732, (920) 929-2924.

*Green Bay:* Suite 311, 200 North Jefferson Street, Green Bay 54301-5197, (920) 448-5281.

*Janesville:* 1900 Center Avenue, Janesville 53546, (608) 741-3583.

*Kenosha:* 712-55th Street, Kenosha 53140-3690, (262) 653-6453.

*La Crosse:* Wing B, 333 Buchner Place, La Crosse 54603-3122, (608) 785-9500.

*Madison:* 1819 Aberg Avenue, Suite E, Madison 53704, (608) 242-4800.

*Milwaukee Northeast:* 429 West North Avenue, Milwaukee 53212-3146, (414) 267-2270.

*Milwaukee Northwest:* 6830 West Villard Avenue, Milwaukee 53218-3936, (414) 438-4860.

*Milwaukee Southeast:* Suite 430, 555 West Layton Avenue, Milwaukee 53207-5931, (414) 769-5700.

*Milwaukee Southwest:* Room 408, 9401 West Beloit Road, Milwaukee 53227-4380, (414) 546-8340.

*Worker's Compensation Division:* JUDY NORMAN-NUNNERY, *administrator*, 266-6841, [normaju@](mailto:normaju@); JOHN CONWAY, *deputy administrator*, 266-0337, [conwajo@](mailto:conwajo@)

*Claims Management, Bureau of:* LEE SHOREY, *director*, 267-9407, [shorel@](mailto:shorel@)

*Insurance Programs, Bureau of:* vacancy, *director*, 266-3149.

*Legal Services, Bureau of:* RICHARD SMITH, *director*, 267-6704, [smithri@](mailto:smithri@)

*Workforce Solutions, Division of:* ERIC BAKER, *administrator*, 266-2284, [bakere@](mailto:bakere@); MARY C. ROWIN, *deputy*, 267-9022, [rowinma@](mailto:rowinma@); RONALD HUNT, *deputy*, 266-2687, [huntro@](mailto:huntro@)

*Apprenticeship Standards, Bureau of:* KAREN P. MORGAN, *director*, 266-3133, [morgak@](mailto:morgak@)

*Child Support Enforcement, Bureau of:* SUSAN PFEIFFER, *director*, 267-4337, [pfeifsu@](mailto:pfeifsu@)

*Division-wide Services, Bureau of:* NANCY BUCKWALTER, *director*, 266-7160, [buckwna@](mailto:buckwna@)  
*Job Service, Bureau of:* vacancy, *director*, 266-1895.

*Migrant Services, Bureau of:* MATEO CADENA, *director*, 266-0002, [cadenma@](mailto:cadenma@)

*Workforce Connection and Advancement, Bureau of:* vacancy, *director*, 266-0613.

*Workforce Information, Bureau of:* PATRICK MOMMAERTS, *director*, 266-8212, [mommapa@](mailto:mommapa@)

*Regional Offices:*

*Ashland:* 220 Third Avenue West, P.O. Box 72, Ashland 54806-0072, (715) 682-7285.

*Eau Claire:* 221 West Madison Street, Suite 218, Eau Claire 54703-4404, (715) 836-2177.

*Green Bay:* 200 North Jefferson Street, Suite 428, Green Bay 54301, (920) 448-5305.

*Madison:* 3601 Memorial Drive, Madison 53704-1104, (608) 243-2404.

*Milwaukee:* 819 North 6th Street, 6th Floor, Milwaukee 53203-1606, (414) 227-4245.

*Rhineland:* P.O. Box 697, 130 South Stevens, Rhineland 54501-0697, (715) 365-2568.

*Waukesha:* 141 NW Barstow Street, Room 209, Waukesha 53188, (262) 521-5303.

**Agency Responsibility:** The Department of Workforce Development conducts a variety of work-related programs designed to connect people with employment opportunities in Wisconsin. It has major responsibility for the state's employment and training services, including Wisconsin Works (W-2), which is designed to move welfare recipients into the labor force; job centers; job training and placement services provided in cooperation with private sector employers; apprenticeship programs; and employment-related services for people with disabilities. It oversees the unemployment insurance and worker's compensation programs and is also responsible for adjudicating cases involving employment discrimination, housing discrimination, and labor law.

**Organization:** The department is administered by a secretary who is appointed by the governor with the advice and consent of the senate. The secretary appoints the division administrators from outside the classified service.

**Unit Functions:** The *Administrative Services Division* provides management and program support to the other divisions, including budget, facilities, finance, human resources, information technology, procurement, strategic planning, training, communications, and customer education services.

The *Equal Rights Division* was created in Section 15.223 (1), Wisconsin Statutes, by Chapter 327, Laws of 1967. It enforces state laws that protect citizens from discrimination in employment, housing, and public accommodations. It also administers enforcement of family and medical leave laws and the labor laws relating to hours and conditions of work, minimum wage standards, and timely payment of wages. It determines prevailing wage rates and enforces them for state and municipal public works projects. It enforces child labor laws and plant closing laws.

The *Division of Unemployment Insurance* administers programs to pay benefits to unemployed workers, collect employer taxes, resolve contested benefit claims and employer tax issues, detect unemployment insurance fraud, and collect unemployment insurance overpayments. The division also collects entries for national and Wisconsin New Hire Directory databases.

The *Division of Vocational Rehabilitation* provides employment-related services to individuals who have significant physical and mental disabilities that cause difficulty in securing employment. Each person is counseled and may receive medical, psychological, and vocational evaluations and training services. Employment programs, which are supported through state and federal funding, include vocational rehabilitation for eligible persons with disabilities; supported employment, including job coaching for individuals with severe disabilities; home-based enterprises that allow eligible persons to produce marketable products or services; and the Business Enterprise Program, which establishes business or vending stand locations for individuals who are legally blind.

The *Worker's Compensation Division* administers programs designed to ensure that injured workers receive required benefits from insurers or self-insured employers; encourage rehabilitation and reemployment for injured workers; and promote the reduction of work-related injuries, illnesses, and deaths.

The *Division of Workforce Solutions* oversees all workforce services administered by the department, including Wisconsin Works (W-2) and the Wisconsin Shares child care subsidy. It manages the child support program, the food stamp program, and the state labor exchange system; analyzes and distributes labor market information; monitors migrant worker services; and operates the state apprenticeship program. The division also administers a comprehensive interdepartmental employment and training system through public-private partnerships and a statewide network of job centers.

**History:** In response to the state's industrialization, which began in the 1880s, Wisconsin took the lead nationally in adjusting labor laws to modern industrial conditions. Based on European models, the legislature adopted social insurance, whereby the costs of correcting labor problems, such as worker injuries and unemployment, were imposed on employers as an inducement to prevent the problems.



*As part of the Wisconsin State Fair exhibit, "Wisconsin Cares for Kids", the Division of Vocational Rehabilitation demonstrated adaptive toys, designed for children with disabilities. (Department of Workforce Development)*

Wisconsin's laws, enacted during the early part of the 20th century, dealt with minimum wage, conditions of employment for women and children, worker's compensation, free public employment offices, apprenticeship standards, and job safety regulations. Many of these programs served as models for legislation in other states. Wisconsin's original worker's compensation act (Chapter 50, Laws of 1911) was the first state law of its kind in the nation. In the 1930s, Wisconsin led in developing the unemployment compensation system (Chapter 20, Laws of Special Session 1931) and issued the first benefit check in the nation in 1936.

Since World War II, Wisconsin has enacted legislation prohibiting discrimination in employment on the basis of race, sex, creed, national origin, marital status, ancestry, arrest or conviction record, off-duty use of lawful products, membership in military reserve, sexual orientation, age, and disability. Similar laws now protect access to housing and public accommodations.

Early in the 20th century, the state delegated labor law administration to a politically independent body of experts, the State Industrial Commission, and its advisory committees. The commission was encouraged to solve problems through administrative decisionmaking and the development of administrative rules to supplement the laws. A close tie between state government and the University of Wisconsin enabled the governor and legislature to translate reforms conceived in the academic arena into law. This cooperative meshing of academic research and government action came to be known as "The Wisconsin Idea".

The Department of Workforce Development evolved from the Wisconsin Bureau of Labor Statistics, which was created in 1883. The bureau was succeeded by the State Industrial Commission in 1911. Following the 1967 executive branch reorganization, the commission directed the new Department of Industry, Labor and Human Relations (DILHR) and was renamed the Industry, Labor and Human Relations Commission by Chapter 276, Laws of 1969. The commission was replaced by a secretary in Chapter 29, Laws of 1977.

Effective July 1, 1996, the Department of Industry, Labor and Human Relations was renamed the Department of Industry, Labor and Job Development by 1995 Act 29, but the department was given the option of using the name Department of Workforce Development in 1995 Wisconsin Act 289. It formally chose to exercise that option beginning July 1, 1996, and the legislature officially recognized the name choice in 1997 Wisconsin Act 3.

The department was significantly altered by 1995 Wisconsin Act 27. It assumed many duties formerly performed by other agencies, in particular supervision of welfare and income maintenance programs and vocational rehabilitation services, which were transferred from the former Department of Health and Social Services. At the same time, the Division of Safety and Buildings was transferred out of the department to the new Department of Commerce. 1997 Wisconsin Act 191 assigned the department primary responsibility for establishing and operating a statewide system for enforcing child, family, and spousal support obligations, including expanded authority to deny, revoke, or suspend various licenses, permits, and credentials of delinquent payors.

### Statutory Councils

**Wisconsin Apprenticeship Council:** JOAN BRAUN, MARY WATRUD, *cochairpersons*; BRYAN ALBRECHT, WAYNE BELANGER, PAUL BLASHKA, JULIE BROLIN, KENNETH CURRY, AMY CURTI, HERBERT G. GEYER, JAMES HODGES, BERNARD KURZAWA, SCOTT LANGELIN, RICHARD LYNES, DAVID NEWBY, DENNIS PENKALSKI, JOHN A. PEETERS, RONALD STEINER, MARJORIE WOOD. (All are appointed by the Labor and Industry Review Commission.)

Mailing Address: P.O. Box 7972, Madison 53707-7972.

Telephone: (608) 266-3133.

The Wisconsin Apprenticeship Council advises the department on matters pertaining to Wisconsin's apprenticeship system. The statutes do not stipulate the number of council members. The council was created by Chapter 29, Laws of 1977, and its duties and composition are prescribed in Sections 15.09 (5) and 15.227 (13) of the statutes.

**Labor and Management Council:** DAVID NEWBY (labor community representative), JENNIFER REINERT (nonvoting public official), *cochairpersons*; LYLE A. BALISTRERI, MARTIN BEIL, ROBERT GLASER, JAY KOPPLIN, THOMAS S. LESCH, JAMES NEWELL, CANDICE OWLEY (labor community representatives); PETER FOX, BRADLEY FULTON, JAMES S. HANEY, THOMAS JACOB LEINENKUGEL, MARY LUND, DUANE MCCRARY, JONATHAN T. SWAIN, vacancy (management representatives); JAMES C. ENGLEBERT, CHARLES D. EVANS, A. HENRY HEMPE, RONALD E. SWEET (nonvoting public employees or officials) (all appointed by governor).

Mailing Address: P.O. Box 7972, Madison 53707-7972.

Telephone: (608) 266-5138.

The 21-member Labor and Management Council provides a forum for labor, management, and public sector representatives to discuss issues that affect the state's economy and to foster positive labor-management relations in the workplace. Council members serve 5-year terms. The council was created by 1987 Wisconsin Act 27, and its composition and duties are prescribed in Section 15.227 (17) of the statutes.

**Migrant Labor Council on:** SENATOR WELCH, *chairperson*; SENATOR ROBSON; REPRESENTATIVES COLÓN, OLSEN; CALVIN J. FRELK, PHILLIP E. GOHLKE, SHERYL L. HOPKINS, SUSAN M. LENIUS, KIMBERLY J. MYERS, RICHARD W. OKRAY (employers of migrant workers); JOHN I. BAUKNECHT, ROSA M. DOMINGUEZ, JOHN F. EBBOTT, MARK GROSS, LUPE MARTINEZ, DORIS P. SLESINGER (migrant workers' representatives). (All except legislative members are appointed by governor.)

Mailing Address: P.O. Box 7903, Madison 53707-7903.

Telephone: (608) 261-4425.

The 16-member Council on Migrant Labor advises the department and other state officials about matters affecting migrant workers. The council's 4 legislator members represent the two major political parties and are appointed "to act as representatives of the public". The nonlegislative members serve 3-year terms. The council was created by Chapter 17, Laws of 1977, and its composition and duties are prescribed in Sections 15.227 (8), 103.967, and 103.968 of the statutes.

**Self-Insurers Council:** GERALD E. ZITZER, *chairperson*; BURMA L. HUDSON, JILL E. JOSWIAK, RICHARD J. KENNEY, JOHN WITTRY (appointed by secretary of workforce development).

Mailing Address: P.O. Box 7901, Madison 53707-7901.

Telephone: (608) 266-3149.

The 5-member Self-Insurers Council advises the department about matters related to companies that cover their own worker's compensation losses rather than insuring them with an insurance carrier. Members are appointed for 3-year terms by the secretary of the department. The council was created by Chapter 29, Laws of 1977, and its duties and composition are prescribed in Sections 15.09 (5) and 15.227 (11) of the statutes.

**Unemployment Insurance, Council on:** GREGORY A. FRIGO (permanent classified employee of department) (nonvoting member), *chairperson*; MICHAEL BOLTON, JOSEPH A. KIRIAKI, ROBERT W. LYONS, PHIL NEUENFELDT, DENNIS PENKALSKI (employee representatives); JAMES BUCHEN, EARL GUSTAFSON, MICHAEL A. JUNEAU, JEAN MATHEWS, ALFRED T. PECK, JR. (employer representatives). (All are appointed by secretary of workforce development.)

Mailing Address: P.O. Box 8942, Madison 53708-8942.

Telephone: (608) 266-3189.

The 11-member Council on Unemployment Insurance advises the legislature and the department about unemployment compensation matters. It includes 5 employers and 5 employees who are appointed for 6-year terms, plus a permanent, classified employee of the department who acts as the council's nonvoting chairperson. In making council appointments, the secretary must consider "balanced representation of the industrial, commercial, construction, nonprofit and public sectors of the state's economy." One employer representative must be a small business owner or represent a small business association. The council was created as the Council on Unemployment Compensation by Chapter 327, Laws of 1967. Its name was changed by 1997 Wisconsin Act 39. Its composition and duties are prescribed in Sections 15.227 (3) and 108.14 (5) of the statutes.

**Worker's Compensation, Council on:** JUDY NORMAN-NUNNERY (department or commission employee), *chairperson*; RICHARD J. BAGIN, JEFFREY J. BEIRIGER, JAMES A. BUCHEN, KATHLEEN COAKLEY, GREG GLEICHERT (employer representatives); ROBERT GLASER, EMIL R. MUELVETTER, DAVID NEWBY, CAROL VETTER, PAUL WELNAK (employee representatives); ROB FRONK, DON GRASSL, BRUCE OLSON (nonvoting insurance company representatives). (All are appointed by secretary of workforce development.)

Mailing Address: P.O. Box 7901, Madison 53707-7901.

Telephone: (608) 266-6841.

The 14-member Council on Worker's Compensation is appointed by the secretary of the department to advise the legislature and the department about worker's compensation and related matters. The council was created by Chapter 281, Laws of 1963, as the Advisory Committee on Workmen's Compensation, appointed by the Industrial Commission. It was given its current name and located in the Department of Industry, Labor and Human Relations by Chapter 327, Laws of 1967. The council includes three nonvoting representatives of insurers authorized to do worker's compensation insurance business in Wisconsin and a department or commission employee acting as chairperson. The council's composition and duties are prescribed in Sections 15.227 (4) and 102.14 (2) of the statutes.

INDEPENDENT UNITS ATTACHED FOR PROGRAM COORDINATION AND RELATED MANAGEMENT FUNCTIONS BY SECTION 15.03 OF THE STATUTES

#### LABOR AND INDUSTRY REVIEW COMMISSION

**Labor and Industry Review Commission:** DAVID B. FALSTAD, *chairperson*; LAURIE R. MCCALLUM (pending senate confirmation), JAMES A. RUTKOWSKI (appointed by the governor with senate consent).

*General Counsel:* JAMES L. PFLASTERER, pflasja@dwd.state.wi.us

**Mailing Address:** P.O. Box 8126, Madison 53708-8126.

**Location:** Public Broadcasting Building, 3319 West Beltline Highway, Madison.

**Telephone:** (608) 266-9850.

**Fax:** (608) 267-4409.

**E-mail Address:** dwdlirc@dwd.state.wi.us

**Internet Address:** www.dwd.state.wi.us/lirc

**Publications:** Informational brochure.

**Number of Employees:** 30.00.

**Total Budget 1999-2001:** \$4,825,700.

**Statutory References:** Sections 15.225, 15.227, and 103.04.

**Agency Responsibility:** The 3-member Labor and Industry Review Commission is a quasi-judicial body, created by Chapter 29, Laws of 1977, which handles petitions seeking review of the decisions of the Department of Workforce Development related to unemployment insurance, worker's compensation, fair employment, and public accommodations. It also hears appeals about discrimination in postsecondary education involving a person's physical condition or developmental disability. Commission decisions may be appealed to the circuit court. Commission decisions are enforced by the Department of Justice or the commission's legal staff. Commission members serve full-time for staggered 6-year terms, and they select a chairperson from their membership to serve for a 2-year period. By law, the commission's budget must be transmitted to the governor by the department without modification, unless the commission agrees to the change.

### WISCONSIN CONSERVATION CORPS BOARD

**Wisconsin Conservation Corps Board:** GERALD H. DERR, *chairperson*; GORDON SILL, *vice chairperson*; SHEILA HARSDORF, *secretary*; vacancy (member of a local workforce development board); LAUREN HAMBROOK, JOHN R. KRIHA, BRIAN SCHIMMING. (All are appointed by governor.)

**Executive Secretary:** LAURA P. DEGOLIER (appointed by governor with senate consent), degolla@dwd.state.wi.us

**Mailing Address:** Room 406, 30 West Mifflin Street, Madison 53703-2558.

**Telephone:** (608) 266-7730.

**Fax:** (608) 267-2733.

**Internet Address:** www.dwd.state.wi.us/wcc

**Publications:** Biennial Report; *On Corps!* (monthly newsletter).

**Number of Employees:** 11.00.

**Total Budget 1999-2001:** \$11,740,300.

**Statutory References:** Sections 15.225 (2) and 106.215.

**Agency Responsibility:** The 7-member Wisconsin Conservation Corps Board is the policy-making board for the Wisconsin Conservation Corps (WCC). The WCC provides work experience and personal development opportunities for underemployed and unemployed men and women ages 18-25 by implementing conservation and human services projects for federal and state agencies, local units of government, and nonprofit organizations. The board establishes guidelines for the projects and sets standards and procedures for the selection, hiring, and training of corps members. The board's staff supervises the projects and handles the recruitment and training of the crew leaders and the corps members chosen to work for one-year terms at different project sites throughout the state. Upon completion of their year of service, corps members are eligible for a cash bonus or a tuition voucher. There are approximately 300 slots for corps enrollees each year.

Board members serve staggered 6-year terms and must represent regional, environmental, and agricultural interests. One of them must be a member of a local workforce development board, established under the federal Job Training Partnership Act. The secretary of agriculture, trade and consumer protection, the secretary of health and family services, the secretary of workforce development, the secretary of natural resources, and the chancellor of UW-Extension (or their designees) serve as nonvoting liaison representatives to the board.

The board was created by 1983 Wisconsin Act 27 and attached to the Department of Natural Resources. 1985 Wisconsin Act 29 attached it to the Department of Administration. It was attached to the Department of Workforce Development by 1995 Wisconsin Act 27.

**GOVERNOR'S WORK-BASED LEARNING BOARD**

**Governor's Work-Based Learning Board:** GOV. SCOTT MCCALLUM, *chairperson*; ELIZABETH BURMASTER (State Superintendent of Public Instruction); L. ANNE REID (president, Technical College System Board); ED CHIN (director, Technical College System Board); JENNIFER REINERT (secretary of workforce development); RICHARD GARTNER (administrator, Division of Workforce Excellence, Department of Workforce Development); JIM SCHULTZ, MIKE RYAN (representing organized labor and appointed by assembly speaker and senate majority leader, respectively); JOHN TORINUS, LOUIS FORTIS (representing business and industry and appointed by assembly speaker and senate majority leader, respectively); PHIL NEUENFELDT, DOROTHY WALKER (representing organized labor); BETH NEMECEK, KIM KINDSCHI (representing business and industry); KATHLEEN M. COOKE, VICKI J. POOLE (representing secondary vocational education and work-based learning); MARGARET A. FARROW (representing public interest). (All but *ex officio* members and those appointed by legislature are appointed by the governor.)

*Executive Director:* TOM GALLAGHER, [gallato@dwd.state.wi.us](mailto:gallato@dwd.state.wi.us)

**Mailing Address:** 131 West Wilson Street, Suite 1001, P.O. Box 7891, Madison 53707-7891.

**Telephone:** (608) 264-6808

**Fax:** (608) 261-6698

**Internet Address:** <http://www.dwd.state.wi.us/gwblb>

**Publications:**

**Number of Employees:** 17.75.

**Total Budget 1999-2001:** \$23,295,500.

**Statutory References:** 15.07 (2) (k), 15.225 (3), 106.12, and 118.34 (4)

**Agency Responsibility:** The 17-member Governor's Work-Based Learning Board, created by 1999 Wisconsin Act 9, plans and implements the Youth Apprenticeship, School-to-Work, and Work-Based Learning Programs and any such other employment and education programs assigned by the governor to the board. By statute, the governor serves as chairperson of the board and must appoint the executive director from outside the classified service.

---

---

## STATE AUTHORITIES

---

*Authorities are public, corporate bodies created for specific purposes.*

---

### UNIVERSITY OF WISCONSIN HOSPITALS AND CLINICS AUTHORITY

*Board of Directors:* FRANK J. PELISEK (appointed by governor with senate consent), *chairperson*; SENATOR BURKE (senate cochairperson, Joint Committee on Finance), REPRESENTATIVE GARD (assembly cochairperson, Joint Committee on Finance); PATRICK G. BOYLE, GUY GOTTSCHALK, FREDERIC MOHS (UW Board of Regents members appointed by board president); JOHN WILEY (chancellor, UW-Madison); PHILIP M. FARRELL (dean, UW-Madison Medical School); LAYTON G. RIKKERS (departmental chairperson, UW-Madison Medical School, appointed by UW-Madison chancellor), THELMA WELLS (UW health professions faculty, other than UW Medical School, appointed by UW-Madison chancellor); GEORGE LIGHTBOURN (secretary of administration); PHILIP J. DAHLBERG, GEORGE K. STEIL, SR. (appointed by governor with senate consent). Nonvoting members: CAROL L. BOOTH, vacancy (labor representatives appointed by governor).

**Chief Executive Officer:** DONNA K. SOLLENBERGER.

**Mailing Address:** 600 Highland Avenue, Room H4/810, Madison 53792-8350.

**Location:** 600 Highland Avenue, Madison.

**Telephone:** (608) 263-8025.

**Fax:** (608) 263-9830.

**Publication:** *HealthLink* (newsletter for Dane County residents); *Medical Directions* (newsletter for state physicians).

**Number of Employees:** 5,364.00 (not state funded).

**Total Budget 1999-2001:** \$1,216,889 (not state funded).

**Statutory References:** Section 15.96; Chapter 233.

**Agency Responsibility:** The University of Wisconsin Hospitals and Clinics Authority operates the UW Hospital and Clinics and supervises the delivery of health care and treatment, including care for the indigent. Through the UW Hospital and Clinics, it provides instruction for students of medicine and other health professions, sponsors and supports medical research, and assists health care programs and personnel throughout the state. It also operates a poison control center and other community health programs. Subject to approval by its board, the Authority may issue bonds to support its operations and may seek financing from the Wisconsin Health and Educational Facilities Authority.

**Organization:** The Authority is a public corporation, which is self-financing. It derives much of its income from charges for clinical and hospital services. The 15-member board of directors includes 2 nonvoting members from the two separate bargaining units that represent Authority employees. The governor's appointees serve 3-year terms. The board elects a chairperson annually and appoints the chief executive officer for the Authority. The Authority was created by 1995 Wisconsin Act 27, which separated UW Hospital and Clinics and their related services from the UW System, effective July 1, 1996.

---

## WISCONSIN HEALTH AND EDUCATIONAL FACILITIES AUTHORITY

*Members:* JOY A. STUBBLEFIELD, *chairperson*; DANIEL P. BLASK, *vice chairperson*; EDWARD M. APRAHAMIAN, PAUL B. LUBER, DEAN K. ROE, PAUL J. SENTY, TIMOTHY K. SIZE (appointed by governor with senate consent).

**Executive Director:** LAWRENCE R. NINES.

**Mailing Address:** 18000 West Sarah Lane, Suite 140, Brookfield 53045-5841.

**Telephone:** (262) 792-0466.

**Fax:** (262) 792-0649.

**Agency E-mail Address:** whefa@execpc.com

**Internet Address:** <http://www.whefa.com>

**Publications:** Annual Report; WHEFA Capital Comments Newsletter.

**Number of Employees:** 4.00 (not state funded).

**Statutory Reference:** Chapter 231.

**Agency Responsibility:** The Wisconsin Health and Educational Facilities Authority (WHEFA) issues bonds on behalf of nonprofit health care and educational facilities to help them finance their capital costs. Since interest earned on the bonds is exempt from federal income taxation, they can be marketed at lower interest rates, which reduces the cost of borrowing. The Authority has no taxing power and receives no general appropriations from the state; it supports its operations by imposing fees on participating institutions. WHEFA's bonds and notes are funded solely through loan repayments from the borrowing institution or sponsor. Technically, they are not a debt, liability, or obligation of the State of Wisconsin or any of its subdivisions.

WHEFA may issue bonds to finance any qualifying capital project, including new construction, remodeling, and renovation; expansion of current facilities; and purchase of new equipment or furnishings. Some projects require prior approval from the Department of Health and Family Services (DHFS). Upon completion of a project, the Authority may collect rents and revenues to cover the principal and interest on the bonds and administrative expenses. WHEFA may establish rules for the use of a project and appoint the institution or unit administering the facility as its agent.

WHEFA may also issue bonds to refinance outstanding debt of qualifying health care and educational institutions. Health care institutions qualify only when DHFS certifies that refinancing will lead to rate reductions.

**Organization:** WHEFA is a public corporation. Its 7 members are appointed for staggered 7-year terms, and no more than 4 may be members of the same political party. The governor annually appoints one member as chairperson, and the Authority appoints the executive director. The executive director and staff are employed outside the classified service and are not paid by state funds.

**History:** The agency was created as the Wisconsin Health Facilities Authority by Chapter 304, Laws of 1973. Operations began in September 1979, after the Wisconsin Supreme Court found the law constitutional in *State ex rel. Wisconsin Health Facilities Authority v. Lindner*, 91 Wis. 2d 145 (1979), when it ruled that assistance to a religiously affiliated hospital does not advance religion or foster unnecessary entanglement between church and state. The Authority issued its first debt in December 1979.

1987 Wisconsin Act 27 expanded the scope of the agency to include assistance to educational facilities and continuing care retirement communities and changed its name to reflect the broader responsibilities. In 1989 Wisconsin Act 31, the legislature added a rural hospital loan guarantee program that was subsequently repealed by 1995 Wisconsin Act 27. 1993 Wisconsin Act 438 added not-for-profit institutions that have health education as their primary purpose.

---

## WISCONSIN HOUSING AND ECONOMIC DEVELOPMENT AUTHORITY

*Members:* EDWIN ZAGZEBSKI, *chairperson*; JOHN PETERSEN III, *vice chairperson*; DAVID W. KRUGER, *secretary*; L. DUANE WEED, *treasurer*; SENATORS MOORE, FITZGERALD; REPRESENTATIVES MORRIS-TATUM, SYKORA; BRENDA J. BLANCHARD (secretary of commerce), GEORGE LIGHTBOURN (secretary of administration); DANIEL F. LEE, EDWARD W. MOUW. (All except legislative and *ex officio* members are appointed by governor with senate consent.)

**Executive Director:** FRITZ RUF, 266-2893, fritz.ruf@

*Deputy Executive Director:* GEOFF WHEELER, 266-2027, geoff.wheeler@

*Executive Secretary:* MAUREEN BRUNKER, 266-7354, maureen.brunker@

**Mailing Address:** P.O. Box 1728, Madison 53701-1728; Milwaukee Office: Suite 100, 101 West Pleasant Street, Milwaukee 53212.

**Location:** Suite 700, 201 West Washington Avenue, Madison.

**Telephones:** Madison: (608) 266-7884; Milwaukee: (414) 227-4039; Hotline: (800) 334-6873.

**Fax:** Madison: (608) 267-1099; Milwaukee: (414) 227-4704.

**Internet Address:** <http://www.wheda.com>

Address e-mail by combining the user ID and the state extender: [userid@wheda.com](mailto:userid@wheda.com)

*Administrative Services:* JUNE FARGO, *director*, 267-0535, june.fargo@

*Asset Management:* ANN EAVES, *director*, 267-1082, ann.eaves@

*Community Development:* JOHN SCHULTZ, *director*, (414) 227-2292, john.schultz@

*Credit:* MARY C. ZINS, *director*, 266-2184, mary.zins@

*Emerging Markets:* WYMAN B. WINSTON, *director*, 266-9782, wyman.winston@

*Employe Relations:* JANICE HUGHES, *director*, 267-2921, janice.hughes@

*Financial Services:* LAURA B. MORRIS, *chief financial officer*, 266-1640, laura.morris@

*General Counsel:* MICK N. CONRAD, 266-2748, mick.conrad@

*Information Technology:* JAMES SIEBERS, *director*, 266-3183, jim.siebers@

**Publications:** Annual Report; Dividends for Wisconsin; Inventory of Federally Assisted Rental Housing – State of Wisconsin; Wisconsin Housing Authorities Directory.

**Number of Employees:** 172.00 (not state funded).

**Total Budget 1999-2001:** (not state funded).

**Statutory Reference:** Chapter 234.

**Agency Responsibility:** The Wisconsin Housing and Economic Development Authority (WHEDA) provides loans for low- and moderate-income housing, as well as small business and agricultural development projects. The Authority finances most of its programs through the sale of bonds that technically are not an obligation of the State of Wisconsin. Since interest earned on the bonds is exempt from federal income taxation, they can be marketed at lower interest rates, which reduces the cost of borrowing.

WHEDA's single family housing programs include the Home Ownership Mortgage (HOME) Program and the Home Improvement Loan Program. The HOME program provides first mortgage loans to qualified Wisconsin low- and moderate-income families who are purchasing a first home or buying housing in a designated target area. Home improvement loans are provided to low- and moderate-income households at below-market rates to assist them in repairing or improving the energy efficiency of their homes. Other single family programs include a lease-purchase program and assistance program for closing costs. The Authority also administers the property tax deferral loan program for low-income elderly homeowners to enable them to pay property taxes and special assessments on their homes.

Both federally taxable and tax-exempt bonds are used to finance multifamily housing programs, which include homeless and special needs housing initiatives and loans to help with predevelopment of rental housing projects. In addition, the Authority administers the federal Affordable Housing Tax Credit Program for developers of affordable rental housing.

WHEDA acts for the state in administering federally funded housing programs in coordination with the U.S. Department of Housing and Urban Development. Foremost among these are the Section 8 programs of the federal Housing and Community Development Act of 1979, which fund construction and rehabilitation of rental housing through rent subsidies to owners.

A companion organization, the WHEDA Foundation, makes grants to nonprofit organizations and local governments for housing projects that benefit persons-in-crisis. Grants are made to acquire and/or rehabilitate existing housing or construct new housing. The foundation also receives grant money on behalf of WHEDA.

WHEDA administers several economic development programs that encourage job creation and economic growth. These include the Credit Relief Outreach Program (CROP), a loan guarantee program for Wisconsin farmers, and the Linked Deposit Loan Program, which provides an interest rate subsidy for loans to businesses owned and controlled by women and minorities.

The Authority administers a variety of loan guarantee programs: the Agribusiness Fund for businesses that utilize Wisconsin agricultural commodities; the Farm Assets Reinvestment Management Loan Program that assists qualified farmers in acquiring equipment, facilities, land, or livestock or improving facilities or land; and the WHEDA Small Business Guarantee for the expansion of businesses with 50 or fewer employees. It administers the Beginning Farmer Bond Program to help new farmers finance their first farm through tax-exempt bonds.

**Organization:** WHEDA is a public corporation consisting of 12 members. In addition to the secretary of administration and the secretary of commerce, or their designees, there are 4 legislative members who must represent the majority and minority party in each house. The 6 public members serve staggered 4-year terms, and the governor selects one to serve as chairperson for a one-year term. The governor appoints WHEDA's executive director with the advice and consent of the senate for a 2-year term. Staff members are employed outside the classified service and are not paid from state funds.

**History:** WHEDA was created as the Wisconsin Housing Finance Authority by Chapter 287, Laws of 1971. Program operations began in July 1973, after the Wisconsin Supreme Court declared the Housing Finance Authority constitutional in *State ex rel. Warren v. Nusbaum*, 59 Wis. 2d 391 (1973). The Authority issued its first debt instruments in March 1974. In 1983, Wisconsin Act 81 broadened the Authority's mission to include financing for economic development projects and changed the name to the Wisconsin Housing and Economic Development Authority. In 1985 Wisconsin Acts 9 and 153 and 1987 Wisconsin Act 421, the legislature expanded WHEDA's powers to include the insuring and subsidizing of farm operating loans, drought assistance loan guarantees, and interest rate reductions. The legislature added loan guarantee programs for agricultural development and small businesses (1989 Wisconsin Act 31), recycling (1989 Wisconsin Act 335), tourism businesses (1989 Wisconsin Act 336), and businesses located in targeted areas of the state (1991 Wisconsin Act 39). 1993 Wisconsin Act 16 transferred the property tax deferral loan program to WHEDA from the Department of Administration.

---

## WORLD DAIRY CENTER AUTHORITY

*Members:* Inactive.

**Statutory Reference:** Chapter 235.

**Agency Responsibility:** The World Dairy Center Authority is directed to establish a center for the development of dairying in Wisconsin, the United States, and the world. The Authority, which is supported by private funding, analyzes worldwide trends in the dairy industry and recommends actions to be taken by Wisconsin to compete in the global dairy market. It coordinates access to commercial, technical, and general dairy information; promotes Wisconsin and U.S. dairy cattle, technology, products, and services in the global dairy market; and develops new markets for dairy and dairy-related products in cooperation with the Department of Agriculture, Trade and Consumer Protection.

**Organization:** The Authority is a public corporation consisting of 23 members, including 12 who are appointed by the governor to serve 4-year terms. The governor also appoints an addi-

tional public member to serve as chairperson for one year and the executive director to serve a 2-year term.

**History:** The Authority was created by 1991 Wisconsin Act 39.

---

---

## NONPROFIT CORPORATION

*A public nonprofit corporation is created by the legislature for a specific purpose.*

---

### BRADLEY CENTER SPORTS AND ENTERTAINMENT CORPORATION

*Board of Directors:* ULICE PAYNE, JR. (appointed by governor with senate consent), *chairperson*; VIRGIS W. COLBERT, JAMES L. FORBES, CHARLES S. MCNEER (nominated by Bradley Family Foundation); NED W. BECHTHOLD, ERNEST HENDRICKS, DOUGLAS G. KIEL, ESSIE WHITELAW, GEORGE W. WHITTOW. (All are appointed by governor; the 6 members not nominated by the foundation require senate consent.)

**Mailing Address:** 1001 North Fourth Street, Milwaukee 53203-1314.

**Telephone:** (414) 227-0400.

**Fax:** (414) 227-0497.

**E-mail Address:** email@bcsec.com

**Internet Address:** <http://www.bradleycenter.com>

**Statutory Reference:** Section 232.03.

**Agency Responsibility:** The Bradley Center Sports and Entertainment Corporation is a public nonprofit corporation, created by 1985 Wisconsin Act 26 to receive the donation of the Bradley Center, a sports and entertainment facility located in Milwaukee County, from the Bradley Center Corporation. Its responsibility is to own and operate the center for the economic and recreational benefit of the citizens of Wisconsin. The center is the home of the Milwaukee Bucks basketball team, the Milwaukee Admirals hockey team, the Marquette University Golden Eagles basketball team, the Milwaukee Wave indoor soccer club, and the Milwaukee Mustangs arena football team. Other tenants are family entertainment shows and concerts. The state and its political subdivisions are not liable for any debt or obligation of the corporation. The corporation may not divest itself of the center, nor may it dissolve unless the legislature directs it to do so by law. If the corporation is dissolved, all of its assets become state property.

State law exempts the corporation from most open records and open meeting laws applicable to state agencies, but the board must submit an annual financial statement to the governor and the legislature.

**Organization:** The 9 directors of the corporation's board serve staggered 7-year terms, and the board selects its chairperson annually. The 6 members who require senate consent are to "represent the diverse interests of the people of this state", and 3 must have had executive and managerial business experience. All members must be state residents, and none of them may be an elected public official.

---

---

## REGIONAL AGENCIES

*The following agencies were created by state law to function in one specific area of the state, usually an area composed of more than one county.*

---

### REGIONAL PLANNING COMMISSIONS

Regional planning commissions advise local units of government on the planning and delivery of public services to the citizens of a defined region, and they must prepare and adopt master plans for the physical development of the region they serve. Regional planning provides a way to address problems that transcend local government boundaries, and it can offer joint solutions for intergovernmental cooperation.

The commissions may conduct research studies; make and adopt plans for the physical, social, and economic development of the region; assist in grant writing for financial assistance; provide advisory services to local governmental units and other public and private agencies; and coordinate local programs that relate to their objectives. Many commissions serve as a one-stop source of statistical information for the local governments of their area.

Currently, there are nine regional planning commissions, serving all but five of the state's 72 counties. Their boundaries are based on such considerations as common topographical and geographical features; the extent of urban development; existence of special or acute agricultural, forestry, or other rural problems; or regional physical, social, and economic characteristics.

Among the many categories of projects developed or assisted by regional planning commissions are rail and air transportation, waste disposal and recycling, highways, air and water quality, farmland preservation and zoning, outdoor recreation, parking and lakefront studies, and land records modernization.

Chapter 466, Laws of 1955, created the statute that governs the state's regional planning commissions (Section 66.0309, Wisconsin Statutes) and authorized the governor (or a state agency designated by the governor) to create a regional planning commission upon petition by the local governing bodies. Chapter 596, Laws of 1959, amended the law to require a public hearing on a petition to form a planning commission unless the governing bodies of all the local governmental units in the proposed region join in the petition. The 1959 law also made the governor's power to create a commission contingent upon the consent of the governing bodies of local units that in combination include more than 50% of the region's population and equalized assessed valuation of property.

Membership of regional planning commissions varies according to conditions defined by statute. Unless otherwise specified by a region's local governments, the term of office for a commissioner is six years. The commissions are funded through state and federal planning grants, contracts with local governments for special planning services, and a statutorily authorized levy of up to .003% of equalized real estate value charged to each local governmental unit.

As authorized by state law, Wisconsin's regional planning commissions have established the Wisconsin Council of Regional Planning Organizations. The council's purposes include assisting the study of common problems and serving as an information clearinghouse.

#### Bay-Lake Regional Planning Commission

**Region:** Brown, Door, Florence, Kewaunee, Manitowoc, Marinette, Oconto, and Sheboygan Counties.

**Members:** JAMES E. GILLIGAN (Sheboygan), *chairperson*; CHERYL R. MAXWELL (Marinette), *vice chairperson*; LOIS L. TREVER (Oconto), *secretary-treasurer*; WILLIAM CLANCY, PAUL JADIN, CLARENCE J. LAMERS (Brown); CHARLES G. JARMAN, 2 vacancies (Door); EDWIN A. KELLEY, YVONNE VAN PEMBROOK, JOHN ZOELLER (Florence); MERRITT BUSSIÈRE, GERALD NOVICKIS, PAUL J. WOLSKE (Kewaunee); GREGORY E. BUCKLEY, KEVIN M. CRAWFORD, DONALD C. MARKWARDT (Manitowoc); FLORENCE I. MAGNUSON, MARY G. MEYER (Marinette); DONALD A.

GLYNN, AUSTIN C. MAKHOLM (Oconto); MICHAEL K. LEIBHAM, JAMES R. SCHRAMM (Sheboygan).

*Executive Director:* MARTIN W. HOLDEN, mholden@baylakerpc.org

**Mailing Address:** Old Fort Square, 211 North Broadway, Suite 211, Green Bay 54303-2757.

**Telephone:** (920) 448-2820.

**Fax:** (920) 448-2823.

**Internet Address:** <http://www.baylakerpc.org>

### Dane County Regional Planning Commission

**Region:** Dane County.

*Members:* KEN GOLDEN (appointed by City of Madison mayor), *chairperson*; DAVID E. WIGANOWSKY (towns association representative appointed by governor), *vice chairperson*; RICK A. ROLL (villages/cities representative appointed by governor), *secretary*; KAREN CORNWELL (appointed by City of Madison mayor), *treasurer*; LYMAN F. ANDERSON, J. MICHAEL BLASKA, KRISTOPHER HAMPTON (towns association representatives appointed by governor); THOMAS D. HOVEL, RODNEY J. SCHEEL (villages/cities representatives appointed by governor); NELSON EISMAN, JUDY OLSON (appointed by City of Madison mayor); BARRY ASHENFELTER, ROB KENNEDY, WENDY SINNOTT (appointed by Dane County Executive). (Commission scheduled to expire October 1, 2002.)

*Acting Executive Director:* BILL LANE.

**Mailing Address:** 217 South Hamilton Street, Suite 403, Madison 53703.

**Telephone:** 266-4137.

**Fax:** 266-9117.

**E-mail:** dcrpcadm@execpc.com

**Internet Address:** <http://www.execpc.com/~dcrpcgis>

### East Central Wisconsin Regional Planning Commission

**Region:** Calumet, Fond du Lac, Green Lake, Marquette, Menominee, Outagamie, Shawano, Waupaca, Waushara, and Winnebago Counties.

*Members:* DONALD DE GROOT (Outagamie), *chairperson*; YVONNE FEAVEL (Waushara alternate), *vice chairperson*; MERLIN GENTZ, WILMA SPRINGER, CLARENCE WOLF (Calumet); WALTER M. CACIC, DON WILSON, HOWARD ZELMER (Marquette); BRIAN KOWALKOWSKI, RANDY REITER, RUTH M. WINTER (Menominee); TIM HANNA, ALFRED KRAUSE, SALLY MIELKE, ROBERT PALTZER (JAMES SCHUETTE, alternate) (Outagamie); CLARENCE NATZKE, ARLYN TOBER, M. EUGENE ZEUSKE (Shawano); DUANE BROWN, LA VERNE GRUNWALD, KEN HURLBUT (Waupaca); GEORGE SORENSON, LESTER VAN LOON, NORMAN WEISS (Waushara); ERNIE BELLIN, JON DELL'ANTONIA, JOSEPH MAEHL, ARDEN SCHROEDER, JANE VAN DE HEY (RICHARD WOLLANGK, alternate) (Winnebago).

*Executive Director:* HARLAN P. KIESOW, HKiesow@eastcentralrpc.org

**Mailing Address:** 132 Main Street, Menasha 54952-3100.

**Telephone:** (920) 751-4770.

**Fax:** (920) 751-4771.

**Internet Address:** <http://www.eastcentralrpc.org>

### Mississippi River Regional Planning Commission

**Region:** Buffalo, Crawford, Jackson, La Crosse, Monroe, Pepin, Pierce, Trempealeau, and Vernon Counties.

*Members:* RICHARD WILHELM (Pierce), *chairperson*; SALLY OSWALT (La Crosse), *vice chairperson*; EUGENE SAVAGE (Jackson), *secretary-treasurer*; DUANE BAERTSCH, BERGIE RITSCHER,

JAMES SCHOLMEIER (Buffalo); VIRGIL BUTTERIS, PHILIP DOLL, ROBERT ZINKLE (Crawford); AL BARCZAK, DARYL ROSE (Jackson); JAN KEIL, PAUL KWIECINSKI (La Crosse); GEORGE BAKER, JAMES KUHN, GEORGE LUNDY, (Monroe); ELWIN FEDIE, ROGER HILLESTAD, GLEN MOLINE (Pepin); MARVIN MUHLHAUSEN, WILLIAM SCHROEDER (Pierce); JOHN KILLIAN, GERALD MYERS, JEROLD NYSVEN (Trempealeau); KEVIN KEACH, GEORGE NETTUM, JO ANN NICKELATTI (Vernon).

*Executive Director:* GREGORY D. FLOGSTAD.

**Mailing Address:** 1707 Main Street, Suite 240, La Crosse 54601-3227.

**Telephone:** (608) 785-9396.

**Fax:** (608) 785-9394.

**E-mail:** mrrpc@centurytel.net

### North Central Wisconsin Regional Planning Commission

**Region:** Adams, Forest, Juneau, Langlade, Lincoln, Marathon, Oneida, Portage, Vilas, and Wood Counties.

*Members:* ERHARD HUETTL (Forest), *chairperson*; VIRGINIA HEINEMANN (Marathon), *vice chairperson*; CHARLES F. SAYLOR (Juneau), *secretary-treasurer*; WILBUR FRITZ, CLAYTON RANDORF, HERBERT RIECKMANN, JR. (Adams); DONALD KLINE, PAUL MILLAN (Forest); HELMI MEHUS, DAVID PELTON (Juneau); ROBERT CURRAN, SAMUEL HARDIN, DOREEN MCKENNA (Langlade); PHILLIP COHRS, ERWIN LEVERENZ, TOM RICK (Lincoln); BETTYE NALL, vacancy (Marathon); OSCAR COPES, WILBUR PETROSKEY, DONALD THOM (Oneida); 3 vacancies (Portage); 3 vacancies (Vilas); ROBERT BRAUN, FRED CAMACHO, MAURICE MATHEWS (Wood).

*Executive Director:* DENNIS L. LAWRENCE.

**Mailing Address:** 210 McClellan Street, Suite 210, Wausau 54403.

**Telephone:** (715) 849-5510.

**Fax:** (715) 849-5510.

**Internet Address:** <http://www.ncwrpc.org>

**E-Mail:** [staff@ncwrpc.org](mailto:staff@ncwrpc.org)

### Northwest Regional Planning Commission

**Region:** Ashland, Bayfield, Burnett, Douglas, Iron, Price, Rusk, Sawyer, Taylor, and Washburn Counties.

*Members:* DOUGLAS FINN (Douglas), *chairperson*; THOMAS KIEWEG (Ashland), *vice chairperson*; JOHN BLAHNIK (Bayfield), *secretary/treasurer*; GARY KABASA, GARY LAPEAN, LOWELL MILLER (Ashland); WILLIAM KACVINSKY, NEIL PAULSON (Bayfield); MELVIN DANIELS, MILTON STELLRECHT (Burnett); SHARON KOTTER, JOHN SHEPARD (Douglas); PAUL GOTTFWALD, KENNETH LICHT (Iron); LEON NAMTZU, DAN RANCHETTE (Price); FRED HENNEKENS, THURE OSULDSSEN, ELDON SKOGEN (Rusk); HAROLD HELWIG, JEAN LAIER (Sawyer); ALLEN BEADLES, MICHAEL BRADNER, TIMOTHY PETERSON (Taylor); WILLIAM PAULSON, ROBERT WASHKUHN (Washburn); EUGENE BIGBOY, SR. (Bad River Tribal Council); THOMAS MAULSON (Lac du Flambeau Tribal Council); JEAN BUFFALO-REYES (Red Cliff Tribal Council); GAIASHKIBOS (Lac Courte Oreilles Tribal Council); DAVID MERRILL (St. Croix Tribal Council).

*Executive Director:* BRUCE T. DAVIS.

**Mailing Address:** 1400 South River Street, Spooner 54801-1390.

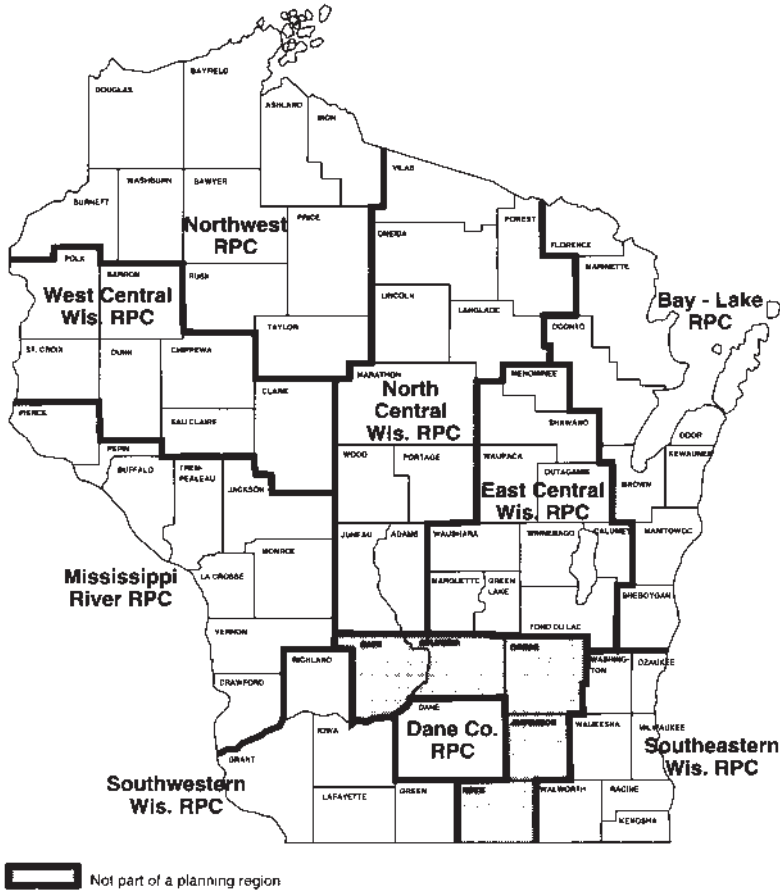
**Telephone:** (715) 635-2197.

**Fax:** (715) 635-7262.

**E-mail:** [nwrpc@centurytel.net](mailto:nwrpc@centurytel.net)

**Internet Address:** <http://www.nwrpc.com>

REGIONAL PLANNING COMMISSION AREAS



**Southeastern Wisconsin Regional Planning Commission**

**Region:** Kenosha, Milwaukee, Ozaukee, Racine, Walworth, Washington, and Waukesha Counties.

**Members:** THOMAS H. BUESTRIN (Ozaukee), *chairperson*; WILLIAM RYAN DREW (Milwaukee), *vice chairperson*; JEAN M. JACOBSON (Racine), *secretary*; ALLEN L. MORRISON (Walworth), *treasurer*; LEON F. DREGER, THOMAS J. GORLINSKI, SHEILA M. SEIGLER (Kenosha); DANIEL J. DILIBERTI, DAVID A. NOVAK (Milwaukee); LEROY A. BLEY, GUSTAV W. WIRTH, JR. (Ozaukee); RICHARD A. HANSEN, JAMES E. MOYER (Racine); ANTHONY F. BALESTRIERI, ROBERT J. VOSS (Walworth); DANIEL S. SCHMIDT, PATRICIA A. STRACHOTA, PETER D. ZIEGLER (Washington); DUANE H. BLUEMKE, KENNETH C. HERRO, PAUL G. VRAKAS (Waukesha).

**Executive Director:** PHILIP C. EVENSON.

**Mailing Address:** 916 North East Avenue, P.O. Box 1607, Waukesha 53187-1607.

**Telephone:** (262) 547-6721.

**Fax:** (262) 547-1103.

**E-mail:** [sewrpc@sewrpc.org](mailto:sewrpc@sewrpc.org)

**Internet Address:** <http://www.sewrpc.org>

### **Southwestern Wisconsin Regional Planning Commission**

**Region:** Grant, Green, Iowa, Lafayette, and Richland Counties.

*Members:* ANN GREENHECK (Richland), *chairperson*; ROBERT HOESLY (Green), *vice chairperson*; COLETTA WEGMANN (Grant), *secretary-treasurer*; EUGENE BARTELS, PAUL BLOYER (Grant); DONNA DOUGLAS, NATHAN KLASSY (Green); DAVID GOLLON, RICHARD GORDER (Iowa); BEVERLY ANDERSON, LAWRENCE L. CHERREY, JACK SAUER (Lafayette); GERALD W. COOK, DAVID MARTIN (Richland).

*Executive Director:* LAWRENCE T. WARD.

**Mailing Address:** Karrmann Library, UW-Platteville, 1 University Plaza, Room 426, Platteville 53818.

**Telephone:** (608) 342-1214.

**Fax:** (608) 342-1220.

**E-mail:** [swwrpc@uwplatt.edu](mailto:swwrpc@uwplatt.edu)

**Internet Address:** <http://www.swwrpc.org>

### **West Central Wisconsin Regional Planning Commission**

**Region:** Barron, Chippewa, Clark, Dunn, Eau Claire, Polk, and St. Croix Counties.

*Members:* ARTHUR JACOBSON (St. Croix), *chairperson*; ROGER HAHN (Eau Claire), *vice chairperson*; FRANK GOODMAN (Chippewa), *secretary-treasurer*; ARNOLD L.G. ELLISON, FRANK PEICHEL, TONY SIREK (Barron); LAVERNE LUDWIGSON, EUGENE RINECK (Chippewa); ERLIN DAHL, CARL KALLBERG, DON KIRN (Clark); RICHARD CREASER, RICHARD G. FRUIT, RICHARD H. JOHNSON (Dunn); JOHN L. FRANK, ELLSWORTH KING (Eau Claire); A. STANLEY ANDERSON, WILLIAM HANSEN, DONALD SCHAULS (Polk); TOM P. O'CONNELL, WAYNE WILLINK (St. Croix).

*Director:* JERRY L. CHASTEEN.

**Mailing Address:** 800 Wisconsin Street, Mail Box 9, Eau Claire 54703-3606.

**Telephone:** (715) 836-2918.

**Fax:** (715) 836-2886.

**E-mail:** [wewrpc@charter.net](mailto:wewrpc@charter.net)

**Internet Address:** <http://webpages.charter.net/wewrpc>

## **REGIONAL TRANSPORTATION AUTHORITY**

*Members:* Inactive.

**Region:** Kenosha, Milwaukee, Ozaukee, Racine, Walworth, Washington, and Waukesha Counties.

**Statutory Reference:** Section 59.966.

The Regional Transportation Authority was designed to coordinate highway and transit programs in a 7-county region in southeastern Wisconsin. The 11-member authority was created by 1991 Wisconsin Act 39.

### SOUTHEAST WISCONSIN PROFESSIONAL BASEBALL PARK DISTRICT

*District Board Members:* ROBERT N. TRUNZO (at-large member appointed by governor), *chairperson*; MICHAEL LEHMAN (Washington County), *vice chairperson*; LORRAINE BLAUBACH (Ozaukee County), FRANK J. BUSALACCHI (Waukesha County), JOHN W. KNUTESON (Racine County), MIKEL K. HOLT (Milwaukee County) (county members appointed by governor); RICHARD COX, DANIEL MCKEITHAN, JR. (Milwaukee County), KAREN MAKOUTZ (Ozaukee County), DOUGLAS STANSIL (Racine County), FREDERICK GIERACH (Washington County), ELAINE KRAUT (Waukesha County) (members appointed by county's chief executive officer); JAMES KAMINSKI (City of Milwaukee representative appointed by mayor).

*Executive Director:* MICHAEL R. DUCKETT.

**Mailing Address:** Miller Park, One Brewer's Way, Milwaukee 53214.

**Telephone:** (414) 902-4040.

**Fax:** (414) 902-4033.

**Statutory Reference:** Chapter 229, Subchapter III.

**Agency Responsibility:** The Southeast Wisconsin Professional Baseball Park District is majority owner of Miller Park, the designated home of the Milwaukee Brewers baseball club. It is a public corporation that may acquire, construct, maintain, improve, operate, and manage baseball park facilities which include parking lots, garages, restaurants, parks, concession facilities, entertainment facilities, and other related structures. The district may impose a sales tax and a use tax at a rate not to exceed 0.1%.

The district is also authorized to issue bonds for certain purposes related to baseball park facilities. A city or county within the district's jurisdiction may make loans or grants to the district, expend funds to subsidize the district, borrow money for baseball park facilities, or grant property to the state dedicated for use by a professional baseball park.

**History:** The district, which was created by 1995 Wisconsin Act 56, includes Milwaukee, Ozaukee, Racine, Washington, and Waukesha Counties. The district board consists of 13 members, 6 appointed by the governor, 6 appointed by the chief executive officers of each county in the district, and one appointed by the mayor of Milwaukee. Members appointed by the governor must be confirmed by the senate. Members appointed by county executive officers or the mayor of Milwaukee must be confirmed by their respective county boards or the city council.

### PROFESSIONAL FOOTBALL STADIUM DISTRICT

*Board Members:* MARK MCMULLEN, *chairperson*; JOHN BROGAN, *vice chairperson*; ANN PATTESON, *secretary*; JAMES SCHMITT, *treasurer*; MARY GOULDING, TED PAMPERIN.

**Statutory Reference:** Chapter 229, Subchapter IV.

**Agency Responsibility:** The Professional Football Stadium District is responsible for the renovation of Lambeau Field, the designated home of the Green Bay Packers football team. It is a public corporation that may acquire, construct, equip, maintain, improve, operate, and manage football stadium facilities or hire others to do the same. The district may issue up to \$160 million in tax exempt revenue bonds to acquire, construct, and maintain a football stadium. The bonds are not the debt of the state, the county, or municipalities located in the district's jurisdiction, but the state pledges to protect the rights of the district's bondholders. The district currently imposes a 0.5% sales and use tax approved by Brown County voters in a referendum. Proceeds from the tax must first be used to pay current debt service on the district's bonds. Any remainder can be used for district administrative expenses, maintenance, and operating costs of stadium facilities and related purposes. The district was created by 1999 Wisconsin Act 167.

## WISCONSIN CENTER DISTRICT

*Board of Directors:* SENATOR BURKE (senate cochairperson, Joint Committee on Finance), REPRESENTATIVE FOTI (designated by assembly cochairperson, Joint Committee on Finance); LINDA J. SEEMEYER (designated by secretary of administration and appointed by governor); JACOB WEISSGERBER (restaurant representative appointed by governor); FRANKLIN M. GIMBEL, STEPHEN M. MARCUS (private sector representatives appointed by governor); W. MARTIN MORIES (City of Milwaukee comptroller); other board members are appointed by the Mayor of Milwaukee, the Milwaukee County Executive, and the Milwaukee Common Council President.

*President:* RICHARD GEYER.

**Mailing Address:** 400 West Wisconsin Avenue, Milwaukee 53203.

**Telephone:** (414) 908-6000.

**Internet Address:** <http://www.wcd.org>

**Statutory Reference:** Chapter 229, Subchapter II.

The Wisconsin Center District owns and operates the U.S. Cellular Arena, the Milwaukee Auditorium, and the Midwest Express Center. It is funded by revenue from services and sales taxes on hotel rooms, restaurant food and beverages, and car rentals. The district is classified by law as a local exposition district that may acquire, construct, and operate an exposition center and related facilities; enter into contracts and grant concessions; mortgage district property and issue bonds; and invest funds as the district board considers appropriate. Local exposition districts are public corporations. Interest income on exposition district bonds is tax-exempt, and the district is exempt from state income and franchise taxes.

The board has 15 members, 13 of whom serve 3-year terms. Legislative members serve for terms concurrent with their term of office. Public officials can no longer serve after their term of office expires. The President of the Milwaukee Common Council appoints 2 public sector representatives who must be city residents. The Mayor of the City of Milwaukee appoints 2 private sector representatives who must reside in the city. The County Executive of Milwaukee County appoints 2 county residents who live outside the City of Milwaukee and represent a private sector entity and a third who must be a mayor or village president from a municipality that contributes room taxes to the district. Of the 4 gubernatorial appointees, 2 must live in Milwaukee County but not in the City of Milwaukee. Private sector appointees must meet residency requirements throughout their term of office and may not serve more than two consecutive terms. The governor's appointees must include the secretary of the state Department of Administration (or designee) and a member who has significant involvement with the lodging industry. Local exposition districts were created by 1993 Wisconsin Act 263.

---

---

## INTERSTATE AGENCIES AND COMPACTS

*Wisconsin is party to a variety of interstate compacts. These agreements are binding on two or more states, and they establish uniform guidelines or procedures for agencies within the signatory states. The following section lists agencies created by enactment of enabling legislation in all of the participating states or by interstate agreement of their respective governors. It also describes interstate compacts that are expressly ratified in the Wisconsin Statutes but do not require appointment of delegates.*

---

### EDUCATION COMMISSION OF THE STATES

*Wisconsin Delegates:* GOVERNOR SCOTT MCCALLUM, *chairperson*; ELIZABETH BURMASTER (superintendent of public instruction); SENATOR SHIBILSKI, REPRESENTATIVE NASS; JON E. LITSCHER, ED SONTAG, MILES TURNER (public members appointed by governor).

**Mailing Addresses:** Wisconsin delegation: Secretary of the Department of Administration, 101 East Wilson Street, P.O. Box 7864, Madison 53707-7864. National commission: Education Commission of the States, 1860 Lincoln Street, Suite 300, Denver, Colorado 80295.

**Telephone:** 266-1741.

**Statutory References:** Sections 39.75 and 39.76.

**Agency Responsibility:** The Education Commission of the States was established to develop national cooperation among executive, legislative, educational, and lay leaders of the various states. It offers a forum for discussing policy alternatives in the education field; provides an information clearinghouse about educational problems and their various solutions throughout the nation; and facilitates the improvement of state and local educational systems. The governor designates the chairperson of the 7-member delegation, and the Department of Administration provides staff services. Wisconsin's participation in the commission originated in Chapter 641, Laws of 1965, which established an interstate compact for education and specified the composition of the Wisconsin delegation.

---

### WISCONSIN GREAT LAKES COMPACT COMMISSION

*Wisconsin Members:* NATHANIEL E. ROBINSON (state officer member), *secretary*; WILLIAM C. CAREY, THOMAS P. KELL (all appointed by governor).

**Mailing Addresses:** Wisconsin Great Lakes Compact Commission: Technical College System, P.O. Box 7874, Madison 53707-7874. Great Lakes Commission: Michael Donahue, *executive director*, The Argus II Building, 400 Fourth Street, Ann Arbor, Michigan 48103-4816.

**Telephones:** Wisconsin Great Lakes Compact Commission: (608) 266-7257; Great Lakes Commission: (734) 665-9135.

**Commission Fax:** (734) 665-4370.

**Internet Address:** <http://www.glc.org>

**Publications of the Great Lakes Commission:** *Advisor*; *ANS Update*; annual reports; special reports.

**Statutory Reference:** Section 14.78.

**Agency Responsibility:** The Wisconsin Great Lakes Compact Commission represents Wisconsin on the 8-state Great Lakes Commission. The interstate commission promotes orderly development of the water resources of the Great Lakes Basin; offers advice on balancing industrial, commercial, agricultural, water supply, and residential and recreational uses of the lakes'

water resources; and enables basin residents to benefit from public works, such as navigational aids.

Commissioners from the states of Illinois, Indiana, Michigan, Minnesota, New York, Ohio, Pennsylvania, and Wisconsin share information and coordinate state positions on issues of regional concern.

**Organization:** Members of the Wisconsin Great Lakes Compact Commission serve as Wisconsin's delegates to the Great Lakes Commission. The governor appoints Wisconsin's 3 members on the basis of their knowledge of and interest in Great Lakes Basin problems. One commissioner, who must be a state officer or employee, is appointed to an indefinite term and serves as secretary of Wisconsin's compact commission and as a member of the executive committee of the interstate commission. Wisconsin's other commissioners serve 4-year terms.

**History:** The Great Lakes Commission was established in 1955 following enactment of enabling legislation by a majority of the Great Lakes states. It replaced the Deep Waterways Commission, established to promote the St. Lawrence Seaway project. With enactment of Chapter 275, Laws of 1955, Wisconsin ratified the Great Lakes Basin Compact and created the Wisconsin Great Lakes Compact Commission. Congress recognized the Great Lakes Basin Compact in P.L. 90-419 on July 24, 1968.

---

## GREAT LAKES PROTECTION FUND

*Wisconsin Representatives:* ANTHONY S. EARL, PATRICK J. OSBORNE (appointed by governor with senate consent).

**Mailing Addresses and Telephones:** Wisconsin: Office of the Governor, Room 115 East, State Capitol, Madison 53702, (608) 266-1212. Great Lakes Protection Fund: Russ Van Herick, *executive director*, 35 East Wacker Drive, Suite 1880, Chicago, Illinois 60601, (312) 201-0660, Fax: (312) 201-0683.

**Statutory Reference:** Section 14.84.

**Agency Responsibility:** The Great Lakes Protection Fund was created by the Council of Great Lakes Governors to finance projects for the protection and cleanup of the Great Lakes. Priorities include the prevention of toxic pollution, the identification of effective clean-up approaches, the demonstration of natural resource stewardship, and the classification of health effects of toxic pollution.

In 1989, the governors of Illinois, Michigan, Minnesota, New York, Ohio, Pennsylvania, and Wisconsin signed the formal agreement creating the Great Lakes Protection Fund, and the Wisconsin Legislature approved the state's participation in 1989 Wisconsin Act 31. The fund was incorporated as a not-for-profit corporation, managed by a board of directors composed of 2 representatives from each member state. Each state's contribution to the original \$100 million endowment was determined by estimating its proportion of Great Lakes water consumption. Wisconsin's share was \$12 million.

---

### LOWER ST. CROIX MANAGEMENT COMMISSION

*Wisconsin Members:* TERRY MOE (designated by secretary of natural resources). Nonvoting member: CLARENCE W. MALICK, *commission coordinator*.

**Telephones and Mailing Addresses:** Wisconsin representative: Department of Natural Resources, (608) 785-9004, State Office Building, 3550 Mormon Coulee Road, Room 108, La Crosse 54601. Coordinator and service center: (715) 386-9444, 619 Second Street, Hudson 54016-1576.

**Agency Responsibility:** The Lower St. Croix Management Commission was created to provide a forum for discussion of problems and programs associated with the Lower St. Croix Scenic Riverway. It coordinates planning, land acquisition, development, protection, and management of the riverway for Wisconsin, Minnesota, and the U.S. government.

The commission was created by a cooperative agreement signed in 1973 by the National Park Service and the governors of Wisconsin and Minnesota. It consists of one member each from the National Park Service and the natural resources departments of the two states. A commissioner of the Minnesota-Wisconsin Boundary Area Commission serves as a nonvoting member of the management commission.

---

### MIDWEST INTERSTATE LOW-LEVEL RADIOACTIVE WASTE COMMISSION

*Wisconsin Member:* STANLEY YORK (appointed by governor with senate consent).

**Mailing Addresses:** Chair and Executive Director Stanley York, Midwest Interstate Low-Level Radioactive Waste Commission, P.O. Box 309, Madison 53701-0309.

**Telephones:** Wisconsin member: 831-5434; Commission: 267-4797.

**Fax:** Wisconsin member: 831-1375; Commission: 267-4700.

**Statutory References:** Sections 14.81 and 16.11.

**Agency Responsibility:** The Midwest Interstate Low-Level Radioactive Waste Commission is responsible for the disposal of low-level radioactive wastes. Based on the Midwest Interstate Low-Level Radioactive Waste Compact, it may negotiate agreements for disposal of waste at facilities within or outside the region; appear as an intervenor before any court, board, or commission in any matter related to waste management; and review the emergency closure of a regional facility. The commission is directed to settle disputes between party states regarding the compact and adopt a regional management plan designating host states for the establishment of needed regional facilities.

Wisconsin's commission member must promote Wisconsin's interest in an equitable distribution of responsibilities among compact member states, encourage public access and participation in the commission's proceedings, and notify the governor and legislature if the commission proposes to designate a disposal facility site in this state.

**Organization:** The commission represents Indiana, Iowa, Minnesota, Missouri, Ohio, and Wisconsin, each of which has one voting member.

**History:** 1983 Wisconsin Act 393 ratified the Midwest Interstate Low-Level Radioactive Waste Compact, which provided for formation of the Midwest Low-Level Radioactive Waste Commission, and 1995 Wisconsin Act 115 ratified amendments to the compact. The U.S. Congress encouraged the development of such compacts by enacting the Low-Level Radioactive Waste Policy Act in 1980, as amended by the Low-Level Radioactive Waste Policy Amendments Act of 1985.

---



*The beautiful St. Croix River forms a major part of Wisconsin's northwest boundary. (Department of Tourism)*

### MIDWESTERN HIGHER EDUCATION COMMISSION

*Wisconsin Members:* BRIAN RUDE (designated by governor); SENATOR GROBSCHMIDT (appointed by senate president); REPRESENTATIVE KREIBICH (appointed by assembly speaker); THOMAS F. GEORGE, ROLF WEGENKE (appointed by governor).

**Mailing Address:** Department of Administration, P.O. Box 7864, Madison 53707-7864.

**Telephone:** 266-1741.

**Statutory Reference:** Sections 14.90 and 39.80.

**Agency Responsibility:** The Midwestern Higher Education Commission was organized to further higher educational opportunities for residents of compact states. The commission may enter into agreements with member and nonmember states, or their universities and colleges, to provide programs and services for students, including student exchanges and improved access. The commission also studies the effects of the Midwestern Higher Education Compact on higher education and the needs and resources for programs in member states.

**Organization:** The commission, composed of eligible states that have ratified the Midwestern Higher Education Compact, currently includes Illinois, Kansas, Michigan, Minnesota, Missouri, Nebraska, Ohio, and Wisconsin. Each state appoints 5 members to the commission, including the governor (or governor's designee) and 2 legislators, who serve 2-year terms. The 2 at-large members appointed by the governor serve 4-year terms, and at least one must be selected from the field of higher education. Any member state may withdraw from the compact 2 years after the passage of a law authorizing withdrawal.

**History:** Wisconsin ratified the Midwestern Higher Education Compact in 1993 Wisconsin Act 358, effective July 1, 1994.

### MINNESOTA-WISCONSIN BOUNDARY AREA COMMISSION

*Wisconsin Members:* WILLIAM H. HOWE, ROBERT R. MULLALLY, FRANCIS OGDEN, CRAIG W. OLSON, GERALD MICHAEL TYLER (appointed by governor with senate consent).

*Administrative Director:* CLARENCE W. MALICK.

**Mailing Address:** 619 Second Street, Hudson 54016-1576.

**Telephones:** Wisconsin: (715) 386-9444; Minnesota: (651) 436-7131.

**Fax:** (715) 386-9571.

**Wisconsin Funding 1999-2001:** \$371,000.

**Statutory Reference:** Section 14.82.

*Wisconsin Legislative Advisory Committee:* SENATORS JAUCH, M. MEYER, 2 vacancies; REPRESENTATIVES BOYLE, GRONEMUS, D. MEYER, 3 vacancies.

*Wisconsin Technical Advisory Committee:* Inactive.

**Agency Responsibility:** The Minnesota-Wisconsin Boundary Area Commission represents a joint effort by Wisconsin and Minnesota to conduct studies, develop recommendations, and coordinate government actions related to present and future protection, use, and development of the lands, river valleys, and waters that form the boundary between the two states. The commission provides field services and advisory recommendations to the sponsor states and serves as management coordinator for the Upper and Lower St. Croix National Scenic Riverways, which are segments of the National Wild and Scenic Rivers System.

**Organization:** Wisconsin's 5 commission members serve staggered 5-year terms. Section 14.82, Wisconsin Statutes, also creates two committees to assist the commission: the Legislative Advisory Committee (consisting of 4 senators and 6 representatives, appointed as are members of standing committees) and the 9-member Technical Advisory Committee. Seven members of the Technical Advisory Committee are appointed by the governing boards or heads of their respective executive agencies and 2 are appointed by the governor.

**History:** The Minnesota-Wisconsin Boundary Area Commission was created by Chapter 274, Laws of 1965, to constitute Wisconsin's representation on the joint Minnesota-Wisconsin Boundary Area Commission. This legislation also ratified a boundary area compact between the two states.

---

## MISSISSIPPI RIVER PARKWAY COMMISSION

*Wisconsin Commissioners:* ALAN L. LORENZ (La Crosse County), *chairperson*; DONNA KREBSBACH (Buffalo County), *vice chairperson*; SENATORS HARSDORF, MEYER; REPRESENTATIVES GRONEMUS, LOEFFELHOLZ; ROBERT G. VALLEY (Crawford County); RICHARD KREUL (Grant County); GLEN W. MOLINE (Pepin County); CAROL J. NELSON (Pierce County); ELWYN BAGLEY (Trempealeau County); CHESTER H. LEE (Vernon County). (Legislators are nominated by presiding officer and appointed by governor. County representatives are appointed by governor with senate consent.) Nonvoting members: BRENDA J. BLANCHARD (secretary of commerce), DARRELL BAZZELL (secretary of natural resources), TERRY MULCAHY (secretary of transportation), GEORGE L. VOGT (director, state historical society), RICHARD SPEROS (secretary of tourism).

**Contact:** ALAN L. LORENZ, lorenzall@msn.com

**Mailing Address:** W4927 Hoeth Street, La Crosse 54601.

**Telephone:** (608) 788-8264.

**Statutory Reference:** Section 14.85.

**Agency Responsibility:** The Mississippi River Parkway Commission coordinates development and preservation of Wisconsin's portion of the Great River Road corridor along the Mississippi River. It assists and advises state and local agencies about maintaining and enhancing the scenic, historic, economic, and recreational assets within the corridor and cooperates with similar commissions in other Mississippi River states and the Province of Ontario. On June 15, 2000, the U.S. Secretary of Transportation designated the entire 250-mile length of the Wisconsin Great River Road as a National Scenic Byway, thereby recognizing it as an outstanding example of America's scenic beauty.

**Organization:** The 17-member Wisconsin commission includes 12 voting members, appointed to 4-year terms, and 5 nonvoting *ex officio* members. The 4 legislative members must represent the two major political parties in each house.

The commission selects its chairperson, who represents Wisconsin on the National Mississippi River National Heritage Commission. The national commission, which includes one member from each of the 10 Mississippi River states, recommends enhancements to the river corridor to preserve its heritage. The chairperson is also Wisconsin's sole voting representative at national meetings of the Mississippi River Parkway Commission.

**History:** The Wisconsin commission is part of the Mississippi River Parkway Commission, which was given statutory recognition by Chapter 482, Laws of 1961. It dates back to 1939 when Wisconsin Governor Julius P. Heil appointed a 10-member committee to cooperate with agencies from other Mississippi River states in planning the Great River Road. When completed, this scenic route will extend from the Gulf of Mexico to the Mississippi River's headwaters at Lake Itasca, Minnesota. North of Lake Itasca, the route connects with the Trans-Canada Highway and terminates at Minaki, Ontario. In 1989, the U.S. Congress enacted legislation that requires each of the 10 Mississippi River states to appoint a representative to the Mississippi National Heritage Commission.

The Federal Highway Aid Acts of 1973, 1976, and 1978 provided Wisconsin approximately \$21 million in Great River Road funding. While categorical funding is no longer available, the Wisconsin Department of Transportation has continued improvements to Wisconsin's portion of

the Great River Road, including pedestrian and bicycle trails, landscaping, preservation of historic sites, and other programs not typically funded by highway aids.

---

## UPPER MISSISSIPPI RIVER BASIN ASSOCIATION

*Wisconsin Representative:* CHRISTOPHER SPOONER (appointed by governor).

**Mailing Addresses:** Wisconsin representative: Office of the Governor, P.O. Box 7863, Madison 53707-7863. Upper Mississippi River Basin Association: Holly Stoerker, Executive Director, 415 Hamm Building, 408 St. Peter Street, St. Paul, Minnesota 55102.

**Madison Location:** 115 East, State Capitol, Madison.

**Telephones:** Wisconsin: 266-1212; Minnesota: (612) 224-2880.

**Agency Responsibility:** The Upper Mississippi River Basin Association is a nonprofit organization created by Illinois, Iowa, Minnesota, Missouri, and Wisconsin to facilitate cooperative action regarding the basin's water and related land resources. It sponsors studies of river-related issues, cooperative planning for use of the region's resources, and an information exchange. It also enables the member states to develop regional positions on resource issues and to advocate the basin states' collective interests before the U.S. Congress and federal agencies. The association has placed major emphasis on its Environmental Management Program, a partnership among the U.S. Army Corps of Engineers, the U.S. Fish and Wildlife Service, and the five states. This program, which was approved by the federal Water Resources Development Act of 1986, authorized habitat rehabilitation projects, resource inventory and analysis, recreation projects, and river traffic monitoring.

**Organization:** The association consists of one representative from each member state. The members annually elect one of their number to serve as chairperson. Five federal agencies with major water resources responsibilities serve as advisory members: the Environmental Protection Agency and the U.S. Departments of Agriculture, Army, Interior, and Transportation.

**History:** The Upper Mississippi River Basin Association was formed on December 2, 1981, when the articles of association were signed by representatives of the member states. In late 1983 and early 1984, executive orders were issued by four of the five governors reaffirming membership in the association.

---

## INTERSTATE COMPACTS

### Interstate Compact on Adoption and Medical Assistance

The compact authorizes the Department of Health and Family Services to enter into agreements with other states that have adoption assistance programs for children with special needs. In these agreements, other states must provide Medical Assistance (MA) benefits to children who were adopted as residents of Wisconsin, and Wisconsin must provide the same benefits to children who were adopted as residents of other states. Any interstate agreement is revocable upon written notice to the other state but remains in effect for one year after the date of the notice. Benefits already granted continue even if the agreement is revoked. The compact has been adopted by 17 states. (1985 Wisconsin Act 302)

**Statutory Reference:** Section 48.9985.

**Administrator:** Department of Health and Family Services.

### Corrections Compact

The compact allows Wisconsin to enter into contracts with states that are party to the compact to confine Wisconsin's inmates in the other state's correctional facilities or receive inmates from other states. The contract provides for inmate upkeep and special services. The compact has been adopted by 35 states. (Chapter 20, Laws of 1981)

**Statutory Reference:** Sections 302.25 and 302.26.

**Administrator:** Department of Corrections.

### Agreement on Detainers

The agreement is designed to clear up indictments or complaints that serve as a basis for a detainer lodged against a prisoner incarcerated in one jurisdiction and wanted in another. The agreement allows the state making the request to obtain temporary custody of the prisoner to conduct a trial on outstanding charges. The agreement has been adopted by 48 states. (Chapter 255, Laws of 1969)

**Statutory Reference:** Sections 976.05 and 976.06.

### Emergency Management Assistance Compact

The compact authorizes states that are members to provide mutual assistance to other member states in an emergency or disaster declared by the governor of the affected state. Under the compact, member states cooperate in emergency-related training and formulate plans for interstate cooperation in responding to a disaster. This compact has been adopted by Iowa, Minnesota, and Wisconsin.

**Statutory Reference:** Section 166.30.

**Administrator:** Division of Emergency Management, Department of Military Affairs.

### Interstate Compact on Juveniles

The compact sets up cooperative procedures for out-of-state supervision of juveniles. It applies to cooperative supervision of delinquent juveniles on probation, extended supervision, or parole; the return of delinquent juveniles who have escaped or absconded; the return of nondelinquent juveniles who have run away from home; and additional measures for the protection of juveniles and the public. All states have adopted the compact. (Chapter 300, Laws of 1955)

**Statutory Reference:** Sections 938-938.998.

**Administrator:** Marie A. Finley, Department of Corrections (appointed by governor).

### Interstate Compact on Mental Health

The compact provides for the care and treatment of mentally ill or mentally deficient persons in need of institutionalization regardless of residency requirements. It authorizes supplementary agreements for joint or cooperative use of mental health resources. The compact has been adopted in 45 states and the District of Columbia. (Chapter 611, Laws of 1965)

**Statutory Reference:** Sections 51.75-51.80.

**Administrator:** Department of Health and Family Services.

### Nurse Licensure Compact

The compact allows a nurse licensed by a party state to practice nursing in any other party state without obtaining a license. It requires each party state to participate in a database of all licensed nurses. This compact has been adopted by Utah and Wisconsin. (1999 Wisconsin Act 22)

**Statutory Reference:** Section 441.50.

**Administrator:** Department of Regulation and Licensing.

**Interstate Compact on Placement of Children**

The compact provides a legal framework to administer child placement activities among the party states as though they were being conducted in one state. It requires notice and proof of suitability before a placement is made; allocates specific legal and administrative responsibilities during the continuance of the placement; provides a basis for enforcement of rights; and authorizes joint actions in all party states to improve operations and services. The compact has been adopted by 47 states. (Chapter 354, Laws of 1977)

**Statutory Reference:** Sections 48.988 and 48.989.

**Administrator:** Susan N. Dreyfus, Department of Health and Family Services (appointed by governor).

**Interstate Agreement on Qualification of Educational Personnel**

The agreement authorizes the State Superintendent of Public Instruction to enter into contracts with party states to accept their educational personnel. These agreements allow Wisconsin to accept teachers from contracting states without reexamining their qualifications and permits other states to accept Wisconsin-trained teachers on the same basis. The agreement has been adopted by 34 states and the District of Columbia. (Chapter 42, Laws of 1969)

**Statutory Reference:** Sections 115.46-115.48.

**Administrator:** State Superintendent of Public Instruction.

**Interstate Compact for Supervision of Parolees and Probationers**

The compact creates cooperative procedures for individuals placed on parole or probation in one state to be supervised in another state if certain conditions are met. All states have adopted the compact. (Chapter 345, Laws of 1939)

**Statutory Reference:** Sections 304.13 and 304.135.

**Administrator:** Department of Corrections.

---