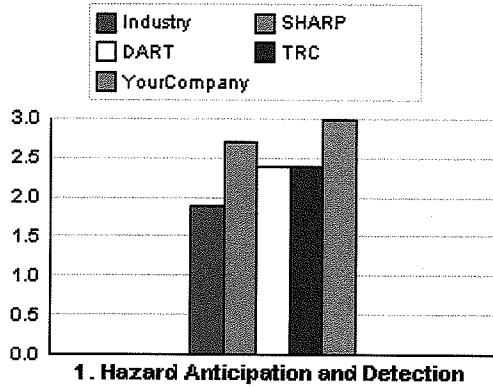


Part 1 - Comparative Performance

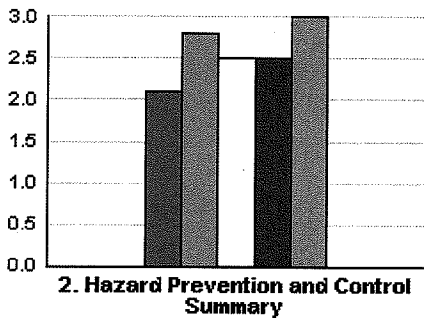
NAICS Code	Description	Year	DART	TRC
326	Plastics and Rubber Products Manufacturing	2008	3.2	5.7
32619	Other Plastics Product Manufacturing	2008	3.3	5.9

Part 2 - Comparative Scoring Profile



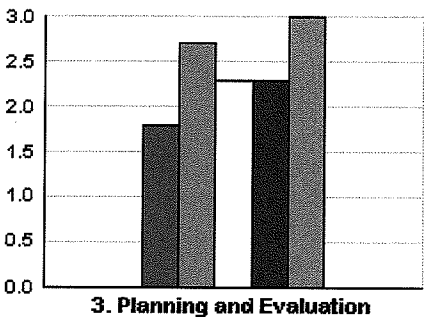
1. Hazard Anticipation and Detection

Item	Your Company	Industry	SHARP*	Top 25% DART**	Top 25% TRC**	No. in Industry
1	3.0	2.1	2.9	2.5	2.6	1278
2	3.0	1.8	2.6	2.1	2.2	1298
3	3.0	1.8	2.6	2.2	2.2	1087
4	3.0	2.0	2.7	2.4	2.4	1116
5	3.0	1.8	2.7	2.3	2.4	816
6	3.0	2.0	2.8	2.5	2.5	1020
7	3.0	2.2	2.8	2.5	2.6	1071
8	3.0	1.7	2.6	2.1	2.2	941
9	3.0	2.0	2.8	2.5	2.5	833
10	3.0	1.8	2.6	2.4	2.4	576
Average:	3.0	1.9	2.7	2.4	2.4	1514



2. Hazard Prevention and Control Summary

Item	Your Company	Industry	SHARP*	Top 25% DART**	Top 25% TRC**	No. in Industry
11	3.0	2.0	2.6	2.4	2.4	1156
12	3.0	2.0	2.8	2.5	2.5	1178
13	3.0	1.9	2.8	2.4	2.4	1243
14	3.0	2.1	2.8	2.6	2.6	1159
15	3.0	2.2	2.8	2.5	2.5	1239
16	3.0	2.1	2.8	2.6	2.6	992
17	3.0	2.2	2.8	2.6	2.6	873
18	3.0	2.2	2.7	2.6	2.6	600
19	3.0	1.9	2.7	2.5	2.5	746
Average:	3.0	2.1	2.8	2.5	2.5	1514



3. Planning and Evaluation

Item	Your Company	Industry	SHARP*	Top 25% DART**	Top 25% TRC**	No. in Industry
20	3.0	1.9	2.8	2.4	2.4	896
21	3.0	1.7	2.7	2.3	2.3	641
22	3.0	1.8	2.7	2.3	2.3	896
23	3.0	1.7	2.7	2.2	2.2	722
24	3.0	1.8	2.7	2.3	2.3	929
25	3.0	1.9	2.7	2.4	2.4	494
Average:	3.0	1.8	2.7	2.3	2.3	1514

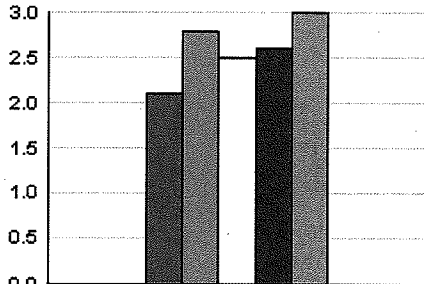
Averages are based on those questions for which company was evaluated.

*SHARP Companies are from multiple industries current to date.

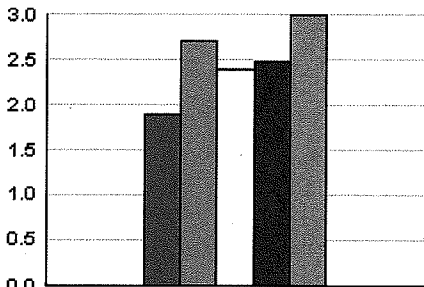
**TOP 25% DART and TRC values are based on only this company's NAICS code.

Note: Stretch attributes 10, 18, 25, 28, 37, 39, 42 and 56 are not directly tied to OSHA standards. BLS Industry/Part 2: Comparative Date Range: 2003 - 2008.

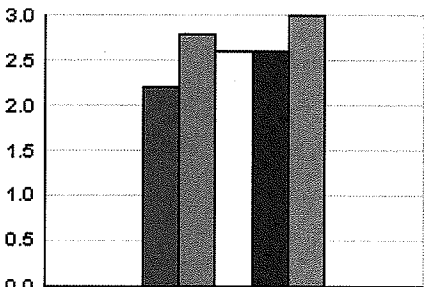
EMPLOYER COMPARATIVE REPORT



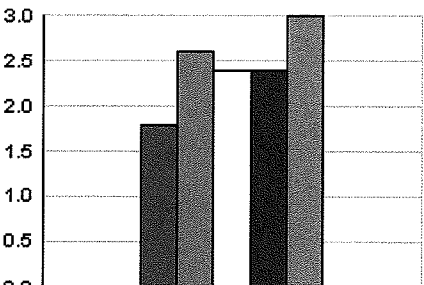
4. Administration and Supervision



5. Safety and Health Training



6. Management Leadership



7. Employee Participation

4. Administration and Supervision

Item	Your Company	Industry	SHARP*	Top 25% DART**	Top 25% TRC**	No. in Industry
26	3.0	2.1	2.8	2.5	2.6	1009
27	3.0	2.1	2.8	2.5	2.6	771
28	3.0	1.9	2.7	2.4	2.5	548
29	3.0	2.0	2.7	2.5	2.5	830
30	3.0	2.3	2.8	2.6	2.7	816
31	3.0	2.3	2.8	2.6	2.7	745
32	3.0	2.1	2.8	2.5	2.6	682
33	3.0	2.1	2.8	2.5	2.6	689
Average:	3.0	2.1	2.8	2.5	2.6	1514

5. Safety and Health Training

Item	Your Company	Industry	SHARP*	Top 25% DART**	Top 25% TRC**	No. in Industry
34	3.0	1.9	2.7	2.3	2.4	1140
35	3.0	2.1	2.8	2.5	2.5	933
36	3.0	1.9	2.7	2.4	2.5	843
37	3.0	1.8	2.6	2.5	2.5	501
38	3.0	1.9	2.7	2.4	2.5	673
39	3.0	1.9	2.6	2.5	2.5	408
Average:	3.0	1.9	2.7	2.4	2.5	1514

6. Management Leadership

Item	Your Company	Industry	SHARP*	Top 25% DART**	Top 25% TRC**	No. in Industry
40	3.0	2.2	2.9	2.5	2.5	978
41	3.0	2.1	2.8	2.5	2.6	716
42	3.0	2.2	2.8	2.7	2.7	512
43	3.0	2.3	2.9	2.7	2.7	789
44	3.0	2.2	2.8	2.6	2.6	659
45	3.0	2.3	2.8	2.6	2.6	692
46	3.0	2.1	2.8	2.6	2.6	694
47	3.0	2.3	2.8	2.7	2.7	633
48	3.0	2.2	2.8	2.6	2.7	615
49	3.0	2.2	2.8	2.6	2.6	703
Average:	3.0	2.2	2.8	2.6	2.6	1514

7. Employee Participation

Item	Your Company	Industry	SHARP*	Top 25% DART**	Top 25% TRC**	No. in Industry
50	3.0	1.9	2.7	2.4	2.4	973
51	3.0	1.7	2.6	2.3	2.3	654
52	3.0	1.7	2.6	2.4	2.4	583
53	3.0	1.7	2.6	2.4	2.4	574
54	3.0	1.8	2.7	2.4	2.4	867
55	3.0	1.8	2.7	2.4	2.4	758
56	3.0	2.0	2.7	2.5	2.5	516
57	3.0	1.7	2.6	2.3	2.3	542
58	3.0	1.6	2.5	2.2	2.3	543
Average:	3.0	1.8	2.6	2.4	2.4	1514

Averages are based on those questions for which company was evaluated.

*SHARP Companies are from multiple industries current to date.

**TOP 25% DART and TRC values are based on only this company's NAICS code.