



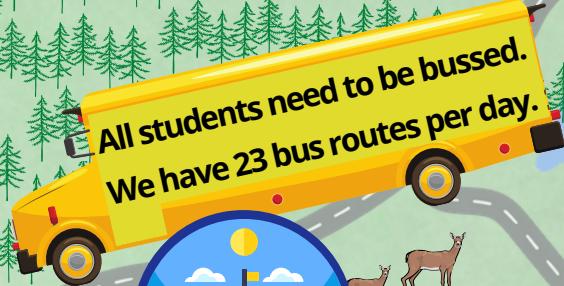
# NORTHLAND PINES SCHOOL FINANCE STORY



**325,000 miles per school year NOT including activities**



**Land O' Lakes Elementary School**



**Northland Pines Middle & High School**

**Eagle River Elementary & SOAR Charter High School**



**St. Germain Elementary & Montessori Learning Center**



**Broadband Tower**

**Our district spans 474 square miles and includes 10 communities!**

**75% or more of our students need better access to internet**

**Northland Pines receives \$0 in Sparsity Aid**



# NORTHLAND PINES SCHOOL FINANCE STORY

## **Funding Formula**

As a "property rich" school district our taxpayers fund about 72% of our costs, whereas state aid only covers 10%. In contrast, districts in other parts of the state receive 45% of their revenue from state aid. Pines property value also does not tell the true story. Over 50% of our students qualify for Free or Reduced Lunch and that number is growing. To continue providing an education that allows our students to compete on a state, national and world level, Northland Pines, like all of its neighbors, needs to use nonrecurring operating referendums to make ends meet. We have been using operating referendums for this purpose since 2002 and thankfully the public supported the latest of \$4.6 million/year for three years.

## **Special Education Categorical Aid**

Last year, Northland Pines transferred over \$2.1 million dollars from Fund 10 to Fund 27 (Special Education). This is approximately 7.5% of our budget. These obligations should be shared with the state at a rate closer to the 50-60% in the proposed budget to allow us to use more dollars on **ALL** students!

## **Transportation Aid**

Lakes and trees are an incredible resource until you try to bus students around them. Our total mileage each year adds up to over 325,000 miles, not including extra-curriculars. Can you imagine riding a bus for an hour twice a day when you are 4 or 5 years old? Can you imagine having to change buses to get to your school? Please consider an increase in both transportation aid and high cost transportation aid. We spend approximately \$1.2 million dollars for transportation costs and that number is only going to rise due the shortage of drivers and rising costs of equipment. This aid helps students and taxpayers.

## **Increase 4K to a Full FTE**

Data shows our students need to be in 4K full-time so we have moved to four full days a week. We would like to make this a five-day a week program, but that commitment is expensive. Therefore, 4K students should be valued at one FTE. At Northland Pines this would mean an additional 27 FTE which would allow us to serve these students with less of an impact on dollars for other students' needs.

## **Mental Health Categorical Aid**

Schools are the main, and sometimes only, support for students and families. We need the financial means to have the staff needed to support the daily mental health demands of our students. Lack of community and regional resources also makes our school one of the only resource families have.

## **Sparsity Aid**

Please support the proposed second tier for sparsity aid. We are the poster district for sparsity; our density is 2.67, well below the threshold of 10 and below the 4.2 average for districts who did receive sparsity aid last year. The \$125,000+ we would receive would continue to help support learning and help our taxpayers. Interestingly, if we would not have formed Northland Pines School District in 1974 but remained a union district instead we would now see between \$500,000 and \$1,000,000 in sparsity aid! We have been saving the taxpayers money all these years by not being a union district, but we are penalized by the sparsity aid criteria for size.

***For more details about Northland Pines School District visit [www.npsd.k12.wi.us](http://www.npsd.k12.wi.us)***