



Specific Procedure Incentive Network (SPIN)

The data in this document has been compiled by Manitowoc County for use by employees and their families covered under the Manitowoc County health care plans.

All data has been obtained from Anthem Care Comparison except as noted.

Anthem is not responsible for any of the data published in this document.



Table of Contents

HOW TO USE THE SPECIFIC PROCEDURE INCENTIVE NETWORK

INTRODUCTION	2
ANTHEM CARE COMPARISON	2
MANITOWOC COUNTY'S SPECIFIC PROCEDURE INCENTIVE NETWORK (SPIN)	2
HOW TO USE THIS BOOKLET	3
HOW TO USE THE SPIN PROGRAM	4-5
HOW TO OBTAIN THE SPIN INCENTIVE	5
SPIN PROVIDER LIST	6
AURORA HEALTH CENTER LOCATIONS	7

PROCEDURES AVAILABLE FOR INCENTIVE

BACK - DIAGNOSTIC - MRI SPINE (OUTPATIENT)	9
BACK SURGERY – SPINAL FUSION, LOWER BACK (INPATIENT)	10
BACK SURGERY – SPINAL FUSION, UPPER BACK (INPATIENT)	11
EAR – INSERTION OF VENTILATING TUBE (OUTPATIENT)	12
EYE SURGERY – CATARACT REMOVAL (OUTPATIENT)	13
GALL BLADDER – REMOVAL BY LAPAROSCOPE, (OUTPATIENT)	14
GROIN – HERNIA REPAIR 5 YEARS AND OLDER (OUTPATIENT)	15
HAND SURGERY – CARPAL TUNNEL (OUTPATIENT)	16
HEAD - DIAGNOSTIC - MRI BRAIN (OUTPATIENT)	17
HEART – LEFT CATHETERIZATION (OUTPATIENT)	18
HIP REPLACEMENT – JOINT REPLACEMENT SURGERY (INPATIENT)	19
KNEE – CARTILAGE REPAIR USING ARTHROSCOPIC (OUTPATIENT)	20
KNEE REPLACEMENT – JOINT REPLACEMENT SURGERY (INPATIENT)	21
LEG - DIAGNOSTIC - MRI LOWER LIMB (OUTPATIENT)	22
PELVIS - DIAGNOSTIC - CT SCAN PELVIS (OUTPATIENT)	23
SHOULDER - ROTATOR CUFF REPAIR USING ARTHROSCOPY (OUTPATIENT)	24
SHOULDER - SURGICAL EXAMINATION USING ARTHROSCOPY (OUTPATIENT)	25
STOMACH - UPPER DIGESTIVE TRACT EXAMINATION USING ENDOSCOPY (OUTPATIENT)	26
STOMACH - UPPER DIGESTIVE TRACT EXAMINATION USING ENDOSCOPY WITH BIOPSY (OUTPATIENT)	27
TONSILS AND ADENOIDS - REMOVAL, UNDER AGE 12 (OUTPATIENT)	28

GLOSSARY/CLAIM FORM

GLOSSARY	29
SPIN CLAIM FORM	30

Introduction

For the past 20 years the rising cost of health care has been at the forefront of discussion in our county, our state, and our nation. Having recognized in 2007 that the status quo was not a viable option, Manitowoc County moved from a traditional preferred provider health plan to a consumer driven health plan which focuses on the following principles:

- Cost of care
- Quality of care
- Consumer education
- Avoiding future costs of care through the promotion of preventative screenings and disease management.

The change to a consumer driven health plan has saved money for both the County and the employees covered under the plan, but we cannot lose sight of dramatically increasing health care costs each year. As we continue to evaluate our health care utilization, we strive to develop tools that provide both cost and quality information to help employees make informed health care decisions that help us control our healthcare costs.

Anthem Care Comparison

While complete health care cost information is not yet available, Anthem is leading the way by providing you access to **Anthem Care Comparison**, an innovative provider cost and quality comparison tool. **Anthem Care Comparison** provides cost by particular providers for *specific procedures*. Employees access this information on the Anthem website (anthem.com) and can use this information to make informed decisions about the purchase of health care services.

Anthem Care Comparison is not focused entirely on cost. Quality is just as important. All providers listed in **Anthem Care Comparison** are “in-network” providers with Anthem. To qualify as an in-network provider both **cost** criteria and **quality** standards have to be met.

The price ranges listed for each procedure in this booklet are approximate costs for an entire episode of care and do not incorporate patient complications. An episode of care includes but is not limited to charges such as physician’s fees and lab and x-ray charges in addition to hospital charges.

Manitowoc County’s Specific Procedure Incentive Network (SPIN)

Using **Anthem Care Comparison** as the primary resource, Manitowoc County has developed the Specific Procedure Incentive Network (SPIN). Beginning **July 1, 2009**, Manitowoc County is launching the SPIN which offers employees the opportunity to earn cash incentives by utilizing more cost effective, quality providers for selected procedures. Participation in the SPIN is strictly voluntary.

The procedures included in the SPIN are specific. The decision of which procedures to include in this program was based on both the frequency of the procedure within our health plan and the difference in cost among providers.

As information from **Anthem Care Comparison** is updated, Manitowoc County reserves the right to change the SPIN providers and incentive amounts. Manitowoc County reserves the right to eliminate the SPIN at any time.

How to Use this Booklet

Each page of this booklet describes a specific procedure. A colored box appears in the middle of each page which shows the SPIN incentive you are eligible to receive for that specific procedure for utilizing providers listed in the relevant tiers. **It is best to share this information with your health care provider prior to receiving services to be sure that the procedure described in this booklet is truly the procedure you will be receiving.**

For your ease in locating each SPIN eligible procedure, a table of contents is provided at the beginning of this booklet.

Example:

Procedure Name

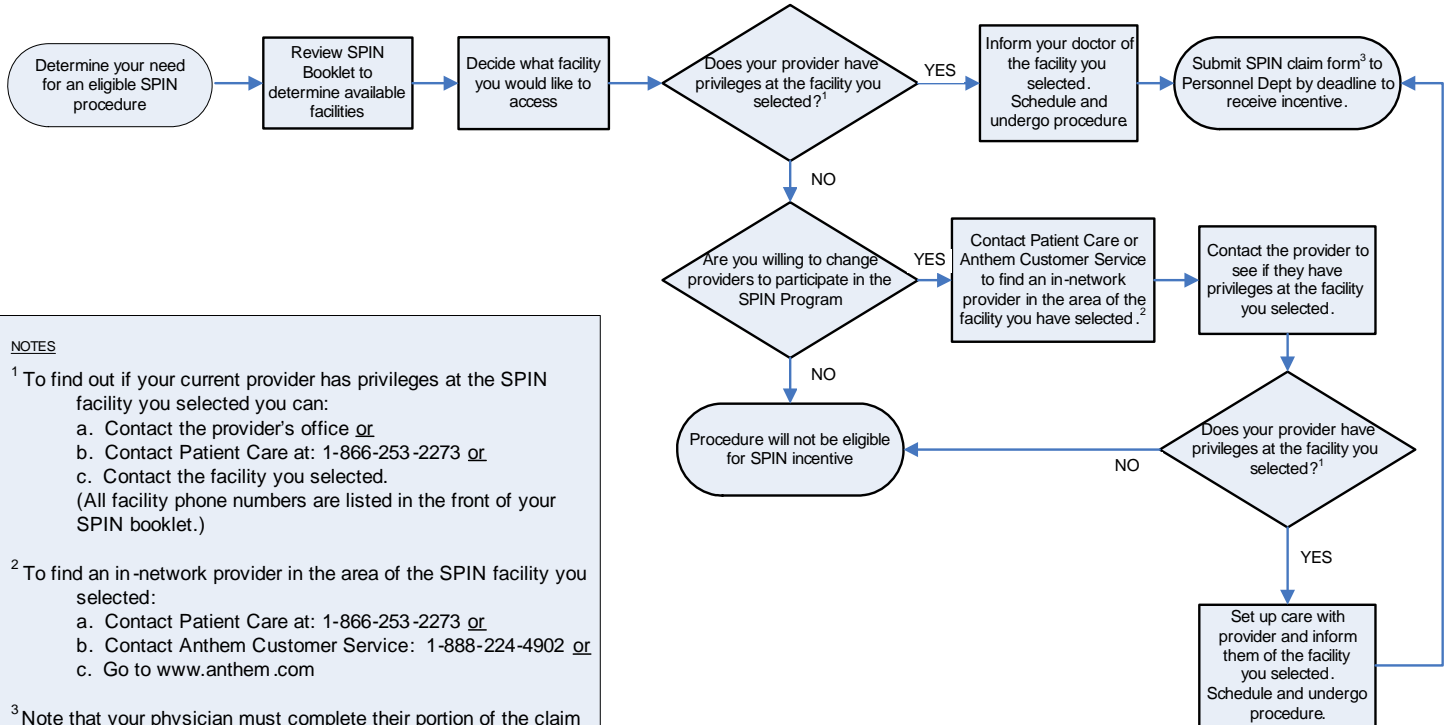
<u>Provider</u>	<u>Incentive</u>
Tier 1	\$1,500
Tier 2	\$1,500
Tier 3	\$ 0

	<u>Provider</u>	<u>Cost of Procedure</u>		<u>\$ Greater (than Tier 1 'High' price)</u>	<u>City</u>
		<u>Low</u>	<u>High</u>		
Tier 1:	Theda Clark Regional Medical Center	\$36,936	\$47,484	n/a	Neenah
Tier 2:	Aurora BayCare Medical Center	\$47,489	\$58,037	\$10,553	Green Bay
Tier 3:	Holy Family Memorial	\$58,043	\$68,590	\$21,107	Manitowoc
	St. Vincent Hospital	\$58,043	\$68,590	\$21,107	Green Bay



How to Use the SPIN Program

If you are already under the care of a provider :



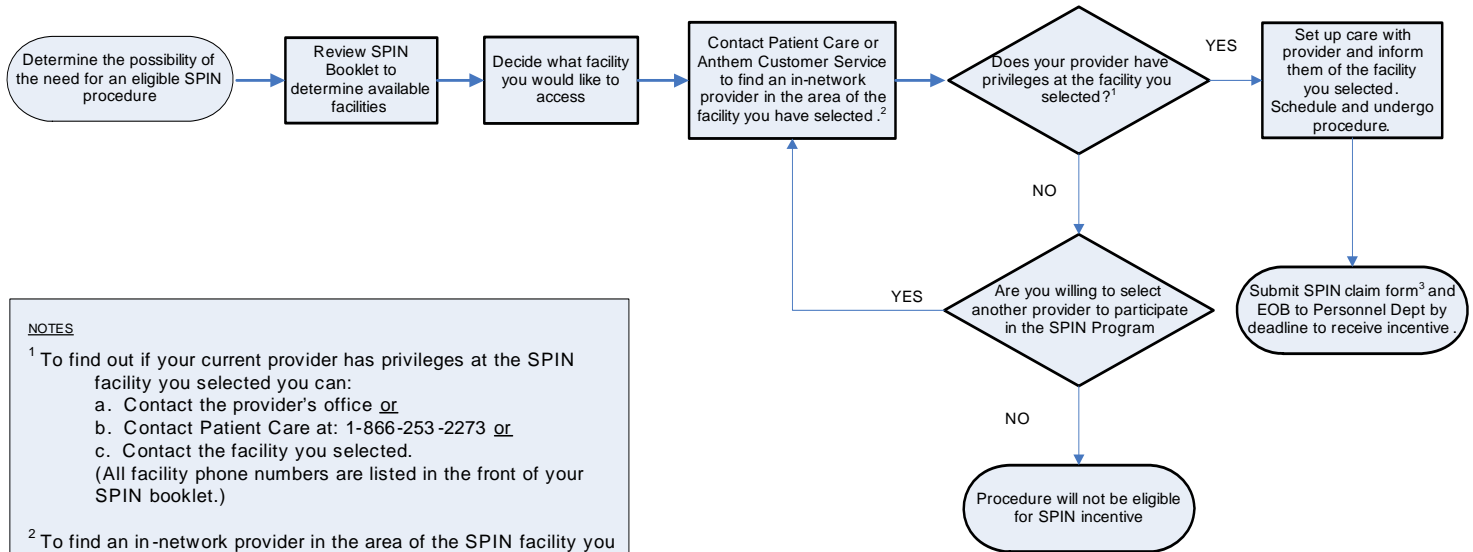
NOTES

¹ To find out if your current provider has privileges at the SPIN facility you selected you can:
a. Contact the provider's office or
b. Contact Patient Care at: 1-866-253-2273 or
c. Contact the facility you selected.
(All facility phone numbers are listed in the front of your SPIN booklet.)

² To find an in-network provider in the area of the SPIN facility you selected:
a. Contact Patient Care at: 1-866-253-2273 or
b. Contact Anthem Customer Service: 1-888-224-4902 or
c. Go to www.anthem.com

³ Note that your physician must complete their portion of the claim form in order for you to receive reimbursement .

If you are not currently under the care of a provider:



NOTES

¹ To find out if your current provider has privileges at the SPIN facility you selected you can:
a. Contact the provider's office or
b. Contact Patient Care at: 1-866-253-2273 or
c. Contact the facility you selected.
(All facility phone numbers are listed in the front of your SPIN booklet.)

² To find an in-network provider in the area of the SPIN facility you selected:
a. Contact Patient Care at: 1-866-253-2273 or
b. Contact Anthem Customer Service: 1-888-224-4902 or
c. Go to www.anthem.com

³ Note that your physician must complete their portion of the claim form in order for you to receive reimbursement .

How to Obtain the SPIN Incentive

1. Incentive amounts vary from procedure to procedure and are considered taxable income.
2. In order to obtain your incentive you must complete the SPIN claim form found at the back of this booklet or online at hrconnection.com (under Benefit Plans – SPIN Program).
3. Please note that your physician must complete their portion of the form.
4. Submit the completed SPIN claim form to the Personnel Department within 60 days of the date the procedure was performed.
5. Documentation must show that the procedure is eligible for coverage in the SPIN program.

Feel free to contact the Personnel Department with any questions you may have regarding the submission of this information. If the information provided is not complete, Manitowoc County will not provide the employee the incentive.

SPIN Provider List

<u>Provider</u>	<u>Address</u>	<u>City</u>	<u>Phone</u>
Ambulatory Surgical Center	501 Doctors Court	Oshkosh, WI 54901	(920) 236-3550
Ambulatory Surgical Center	2105 East Enterprise Ave, 101	Appleton, WI 54913	(920) 560-1100
Appleton Medical Center	1818 N. Meade Street	Appleton, WI 54911	(920) 731-4101
Arthroscopic & Ambulatory Surgery	277 Altenhofen Drive	Appleton, WI 54913	(920) 993-1643
Aurora BayCare Medical Center	2845 Greenbrier Road	Green Bay, WI 54311	(920) 288-8000
Aurora Health Center	Various Locations – See Next Page		
Aurora Medical Center Manitowoc	5000 Memorial Drive	Two Rivers, WI 54241	(920) 794-5000
Aurora Medical Center Oshkosh	855 North Westhaven Drive	Oshkosh, WI 54904	(920) 456-6000
Aurora Sheboygan Memorial Medical Center	2629 North 7th Street	Sheboygan, WI 53083	(920) 451-5000
Aurora Sheboygan Memorial Medical Center	901 Reed Street	Plymouth, WI 53073	(920) 893-1771
Bay Area Medical Center	3100 Shore Drive	Marinette, WI 54143	(715) 737-4200
Bay Vision Clinic	1236 Green Bay Road	Sturgeon Bay, WI 54235	(920) 743-8884
Baycare Clinic	164 North Broadway	Green Bay, WI 54303	(920) 490-9046
Bellin Memorial Hospital	744 South Webster Avenue	Green Bay, WI 54301	(920) 433-3500
Berlin Memorial Hospital	225 Memorial Drive	Berlin, WI 54923	(920) 361-1313
Cardiology Associates of Green Bay	744 South Webster Avenue - 2nd Floor	Green Bay, WI 54301	(800) 472-3242
Children's Hospital of Wisconsin	9000 West Wisconsin Avenue	Milwaukee, WI 5326	(414) 266-2000
Children's Hospital of Wisconsin - Fox Valley	130 2nd Street	Neenah, WI 54956	(920) 969-7900
Community Memorial Hospital	855 South Main Street	Oconto Falls, WI 54154	(920) 846-3444
CT Imaging	744 S. Webster Street	Green Bay, WI 54301	(92) 433-3411
Door County Memorial Hospital	323 South 18th Avenue	Sturgeon Bay, WI 54235	(920) 743-5566
Fond du Lac Surgery Center	421 Camelot Drive	Fond du Lac, WI 54935	(920) 926-5900
Fox Valley Open MRI	201 West Northland Avenue	Appleton, WI 54911	(920) 996-0724
Holy Family Memorial	2300 Western Avenue	Manitowoc, WI 54221	(920) 320-2011
New London Family Medical Center	1405 Mill Street	New London, WI 54961	(920) 531-2000
NE Wisconsin MRI Center (EAST)	2141 Lime Kiln Road	Green Bay, WI 54311	(800) 353-4674
NE Wisconsin MRI Center (WEST)	1241 Lombardi Access Road	Green Bay, WI 54304	(800) 353-4674
Pinnacle Cataract and Laser	4648 West Spencer Street	Appleton, WI 54914	(920) 731-7557
Radiology Assoc. of Appleton (in the Appleton Medical Center)	1818 Meade Street	Appleton, WI 54911	(920) 731-4101
Ripon Medical Center	933 Newbury Street	Ripon, WI 54971	(920) 748-3101
Riverside Medical Center	800 Riverside Drive	Waupaca, WI 54981	(715) 258-1000
Shawano Medical Center	309 North Bartlett Street	Shawano, WI 54166	(715) 526-2111
Theda Clark Regional Medical Center	130 2nd Street	Neenah, WI 54956	(920) 729-3100
St. Agnes Hospital	430 East Division Street	Fond du Lac, WI 54935	(920) 929-2300
St. Mary's Hospital	1726 Shawano Avenue	Green Bay, WI 54303	(920) 498-4200
St. Vincent Hospital	835 South Van Buren Street	Green Bay, WI 54301	(920) 433-0111
Wild Rose Community Memorial Hospital	601 Grove Avenue	Wild Rose, WI 54984	(920) 622-3257
Woodland Surgery Center	2323 Casaloma Drive	Appleton, WI 54912	(888) 383-3039

At the time of producing this document these providers were considered Anthem 'in-network' providers. Provider network status can change. You are *strongly* encouraged to contact Anthem to verify the current network status of the provider at www.anthem.com or 1-800-555-5555.

Aurora Health Center Locations

255 Lakeview Dr.
Belgium, WI 53004
(262) 285-4169

N430 Wood Duck Dr.
Fremont, WI 54940
(920) 446-2000

1136 Westowne Dr.
Neenah, WI 54956
(920) 720-8200

700 Park Ridge Ln.
North Fond Du Lac, WI 54937
(920) 926-7800

106 Mill St.
Reedsville, WI 54230
(920) 754-4337

1146 Plankview Green Blvd.
Sheboygan Falls, WI 53085
(920) 467-2424

721 S Calumet St.
Valders, WI 54245
(920) 754-4377

Procedures Included in the Manitowoc County SPIN Program



Manitowoc County Specific Procedure Incentive Network

Back - Diagnostic - MRI Spine (Outpatient)

<u>Provider</u>	<u>Incentive</u>
Tier 1	\$500
Tier 2	\$ 0
Tier 3	\$ 0

		<u>Cost of Procedure</u>		<u>\$ Greater (than Tier 1 'High' price)</u>	<u>City</u>
<u>Provider</u>		<u>Low</u>	<u>High</u>		
Tier 1:	Fox Valley Open MRI	\$508	\$846	n/a	Appleton
Tier 2:	NE Wisconsin MRI Center	\$846	\$1,184	\$338	Green Bay
Tier 3:	Aurora Medical Center Manitowoc	\$1,185	\$1,523	\$677	Two Rivers
	Aurora BayCare Medical Center	\$1,523	\$1,861	\$1,015	Green Bay
	Riverside Medical Center	\$1,523	\$1,861	\$1,015	Waupaca
	Appleton Medical Center	\$1,523	\$1,861	\$1,015	Appleton
	Theda Clark Medical Center	\$1,523	\$1,861	\$1,015	Neenah
	St. Agnes Hospital	\$1,523	\$1,861	\$1,015	Green Bay
	Bay Area Medical Center	\$1,523	\$1,861	\$1,015	Marinette
	Door County Memorial Hospital	\$1,523	\$1,861	\$1,015	Sturgeon Bay
	New London Family Medical Center	\$1,523	\$1,861	\$1,015	New London
	Aurora Medical Center Oshkosh	\$1,523	\$1,861	\$1,015	Oshkosh
	Holy Family Memorial Medical Center	\$1,523	\$1,861	\$1,015	Manitowoc
	Bellin Health MRI Center	\$1,862	\$2,200	\$1,354	Green Bay
	St. Vincent Hospital	\$1,862	\$2,200	\$1,354	Green Bay
	Berlin Memorial Hospital	\$1,862	\$2,200	\$1,354	Berlin
	Community Memorial Hospital	\$2,539	\$2,877	\$2,031	Oconto Falls



Manitowoc County
Specific Procedure Incentive Network

Back Surgery – Spinal Fusion, Lower Back (Inpatient)

<u>Provider</u>	<u>Incentive</u>
Tier 1	\$1,500
Tier 2	\$1,500
Tier 3	\$ 0

	<u>Provider</u>	<u>Cost of Procedure</u>		<u>\$ Greater (than Tier 1 'High' price)</u>	<u>City</u>
		<u>Low</u>	<u>High</u>		
Tier 1:	Theda Clark Regional Medical Center	\$36,936	\$47,484	n/a	Neenah
Tier 2:	Aurora BayCare Medical Center	\$47,489	\$58,037	\$10,553	Green Bay
Tier 3:	Holy Family Memorial	\$58,043	\$68,590	\$21,106	Manitowoc
	St. Vincent Hospital	\$58,043	\$68,590	\$21,106	Green Bay

Manitowoc County
Specific Procedure Incentive Network

Back Surgery – Spinal Fusion, Upper Back (Inpatient)

<u>Provider</u>	<u>Incentive</u>
Tier 1	\$1,500
Tier 2	\$ 0

		<u>Cost of Procedure</u>		<u>\$ Greater (than Tier 1 'High' price)</u>	<u>City</u>
	<u>Provider</u>	<u>Low</u>	<u>High</u>		
Tier 1:	Theda Clark Regional Medical Center	\$22,691	\$29,171	n/a	Neenah
Tier 2:	Aurora BayCare Medical Center	\$35,657	\$42,137	\$12,966	Green Bay

Manitowoc County
Specific Procedure Incentive Network

Ear – Insertion of Ventilating Tube (Outpatient)

<u>Provider</u>	<u>Incentive</u>
Tier 1	\$250
Tier 2	\$100
Tier 3	\$ 0

		<u>Cost of Procedure</u>		<u>\$ Greater (than Tier 1 'High' price)</u>	<u>City</u>
<u>Provider</u>		<u>Low</u>	<u>High</u>		
Tier 1:	Theda Clark Regional Medical Center	\$1,874	\$2,409	n/a	Neenah
	Fond du Lac Surgery Center	\$1,874	\$2,409	n/a	Fond du Lac
	Aurora Medical Center Oshkosh	\$1,874	\$2,409	n/a	Oshkosh
Tier 2:	St Vincent Hospital	\$2,410	\$2,945	\$536	Green Bay Various
	Aurora Health Center	\$2,410	\$2,945	\$536	Locations
	Appleton Medical Center	\$2,410	\$2,945	\$536	Appleton
	St Mary's Hospital Medical Center	\$2,410	\$2,945	\$536	Green Bay
	Bay Area Medical Center	\$2,410	\$2,945	\$536	Marinette
Tier 3:	Aurora BayCare Medical Center	\$3,480	\$4,016	\$1,607	Green Bay
	Holy Family Memorial Medical Center	\$4,017	\$4,552	\$2,143	Manitowoc

Manitowoc County Specific Procedure Incentive Network

Eye Surgery – Cataract Removal (Outpatient)

<u>Provider</u>	<u>Incentive</u>
Tier 1	\$500
Tier 2	\$300
Tier 3	\$ 0

		<u>Cost of Procedure</u>		<u>\$ Greater (than Tier 1 'High' price)</u>	<u>City</u>
<u>Provider</u>		<u>Low</u>	<u>High</u>		
Tier 1:	Ambulatory Surgical Center LLC	\$3,177	\$4,084	n/a	Oshkosh
	Pinnacle Cataract and Laser Inc	\$3,177	\$4,084	n/a	Appleton
	Riverside Medical Center	\$3,177	\$4,084	n/a	Waupaca
	Theda Clark Regional Medical Center	\$3,177	\$4,084	n/a	Neenah
Tier 2:	Aurora Health Center	\$4,084	\$4,992	\$907	Various locations
	Bay Area Medical Center	\$4,084	\$4,992	\$907	Marinette
	Berlin Memorial Hospital	\$4,084	\$4,992	\$907	Berlin
	St Vincent Hospital	\$4,084	\$4,992	\$907	Green Bay
	Door County Memorial Hospital	\$4,084	\$4,992	\$907	Sturgeon Bay
Tier 3:	Bellin Memorial Hospital	\$4,992	\$5,899	\$1,815	Green Bay
	Aurora Medical Center Manitowoc	\$4,992	\$5,899	\$1,815	Two Rivers
	Aurora BayCare Medical Center	\$4,992	\$5,899	\$1,815	Green Bay
	Holy Family Memorial Medical Center	\$4,992	\$5,899	\$1,815	Manitowoc



Manitowoc County
Specific Procedure Incentive Network

Gall Bladder – Removal by Laparoscope, (Outpatient)

<u>Provider</u>	<u>Incentive</u>
Tier 1	\$ 500
Tier 2	\$ 500
Tier 3	\$ 0

	<u>Provider</u>	<u>Cost of Procedure</u>		<u>\$ Greater (than Tier 1 'High' price)</u>	<u>City</u>
		<u>Low</u>	<u>High</u>		
Tier 1:	Appleton Medical Center	\$5,456	\$7,014	n/a	Appleton
	Aurora Medical Center Oshkosh	\$5,456	\$7,014	n/a	Oshkosh
Tier 2:	Theda Clark Regional Medical Center	\$7,015	\$8,573	\$1,559	Neenah
	New London Family Medical Center	\$7,015	\$8,573	\$1,559	New London
	Aurora Medical Center Manitowoc	\$7,015	\$8,573	\$1,559	Two Rivers
	Aurora BayCare Medical Center	\$7,015	\$8,573	\$1,559	Green Bay
	Bellin Memorial Hospital	\$7,015	\$8,573	\$1,559	Green Bay
Tier 3:	St. Agnes Hospital	\$8,574	\$10,132	\$3,118	Fond du Lac
	Berlin Memorial Hospital	\$8,574	\$10,132	\$3,118	Berlin
	Holy Family Memorial Center	\$13,248	\$14,806	\$7,792	Manitowoc

Manitowoc County Specific Procedure Incentive Network

Groin – Hernia Repair 5 Years and Older (Outpatient)

<u>Provider</u>	<u>Incentive</u>
Tier 1	\$250
Tier 2	\$250
Tier 3	\$ 0

		<u>Cost of Procedure</u>		<u>\$ Greater (than Tier 1 'High' price)</u>	<u>City</u>
<u>Provider</u>	<u>Low</u>	<u>High</u>			
Tier 1:	Aurora Health Center	\$4,172	\$5,363	n/a	Various locations
	Aurora Medical Center Oshkosh	\$4,172	\$5,363	n/a	Oshkosh
	Theda Clark Regional Medical Center	\$4,172	\$5,363	n/a	Neenah
	Aurora Medical Center Manitowoc	\$4,172	\$5,363	n/a	Two Rivers
Tier 2:	Appleton Medical Center	\$5,364	\$6,555	\$1,192	Appleton
	Aurora BayCare Medical Center	\$5,364	\$6,555	\$1,192	Green Bay
	Bellin Memorial Hospital	\$5,364	\$6,555	\$1,192	Green Bay
	St Mary's Hospital Medical Center	\$5,364	\$6,555	\$1,192	Green Bay
Tier 3:	Holy Family Memorial Medical Center	\$7,748	\$8,939	\$2,384	Manitowoc
	Bay Area Medical Center	\$7,748	\$8,939	\$2,384	Marinette



Manitowoc County
Specific Procedure Incentive Network

Hand Surgery – Carpal Tunnel (Outpatient)

<u>Provider</u>	<u>Incentive</u>
Tier 1	\$500
Tier 2	\$300
Tier 3	\$ 0

	<u>Provider</u>	<u>Cost of Procedure</u>		<u>\$ Greater (than Tier 1 'High' price)</u>	<u>City</u>
		<u>Low</u>	<u>High</u>		
Tier 1:	Woodland Surgery Center LLC Ambulatory Surgical Center	\$2,147	\$2,760	n/a	Appleton
	Aurora Health Center	\$2,147	\$2,760	n/a	Appleton Various locations
	Appleton Medical Center	\$2,147	\$2,760	n/a	Appleton
	Theda Clark Regional Medical Center	\$2,147	\$2,760	n/a	Neenah
Tier 2:	St Vincent Hospital	\$2,761	\$3,374	\$614	Green Bay
	Aurora Medical Center Oshkosh	\$2,761	\$3,374	\$614	Oshkosh
	Bellin Memorial Hospital	\$2,761	\$3,374	\$614	Green Bay
Tier 3:	Bay Area Medical Center	\$3,374	\$3,987	\$1,227	Marinette
	Aurora BayCare Medical Center	\$3,988	\$4,601	\$1,841	Green Bay
	Fond du Lac Surgery Center	\$3,988	\$4,601	\$1,841	Fond du Lac
	Holy Family Memorial Center	\$4,602	\$5,215	\$2,455	Manitowoc

Manitowoc County Specific Procedure Incentive Network

Head - Diagnostic - MRI Brain (Outpatient)

<u>Provider</u>	<u>Incentive</u>
Tier 1	\$500
Tier 2	\$ 0
Tier 3	\$ 0

		<u>Cost of Procedure</u>		<u>\$ Greater (than Tier 1 'High' price)</u>	<u>City</u>
<u>Provider</u>		<u>Low</u>	<u>High</u>		
Tier 1:	Fox Valley Open MRI	\$624	\$1,040	n/a	Appleton
Tier 2:	NE Wisconsin MRI Center	\$1,041	\$1,457	\$417	Green Bay
	Aurora Medical Center Manitowoc	\$1,041	\$1,457	\$417	Two Rivers
Tier 3:	Aurora Medical Center Oshkosh	\$1,873	\$2,289	\$1,249	Oshkosh
	Aurora BayCare Medical Center	\$1,873	\$2,289	\$1,249	Green Bay
	Theda Clark Regional Medical Center	\$1,873	\$2,289	\$1,249	Neenah
	Appleton Medical Center	\$1,873	\$2,289	\$1,249	Appleton
	St. Agnes Hospital	\$1,873	\$2,289	\$1,249	Green Bay
	Bay Area Medical Center	\$1,873	\$2,289	\$1,249	Marinette
	Holy Family Memorial Medical Center	\$1,873	\$2,289	\$1,249	Manitowoc Sturgeon Bay
	Door County Memorial Hospital	\$1,873	\$2,289	\$1,249	Bay
	Berlin Memorial Hospital	\$1,873	\$2,289	\$1,249	Berlin
	St. Vincent Hospital	\$2,290	\$2,706	\$1,666	Green Bay
	New London Family Medical Center	\$2,290	\$2,706	\$1,666	New London
	Ripon Medical Center	\$2,290	\$2,706	\$1,666	Ripon
	Bellin Health MRI Center	\$2,706	\$3,122	\$2,082	Green Bay
	Community Memorial Hospital	\$3,122	\$3,538	\$2,498	Oconto Falls



Manitowoc County Specific Procedure Incentive Network

Heart – Left Catheterization (Outpatient)

<u>Provider</u>	<u>Incentive</u>
Tier 1	\$800
Tier 2	\$500
Tier 3	\$ 0

	<u>Provider</u>	<u>Cost of Procedure</u>		<u>\$ Greater (than Tier 1 'High' price)</u>	<u>City</u>
		<u>Low</u>	<u>High</u>		
Tier 1:	Appleton Medical Center	\$3,316	\$4,642	n/a	Appleton
Tier 2:	Theda Clark Regional Medical Center	\$4,643	\$5969	\$1,327	Neenah
	Bellin Memorial Hospital	\$4,643	\$5969	\$1,327	Green Bay
Tier 3:	St. Vincent Hospital	\$5,969	\$7,295	\$2,653	Green Bay
	Aurora BayCare Medical Center	\$5,969	\$7,295	\$2,653	Green Bay
	St. Mary's Hospital Medical Center	\$5,969	\$7,295	\$2,653	Green Bay
	St. Agnes Hospital	\$5,969	\$7,295	\$2,653	Fond du Lac
	Aurora Medical Center Oshkosh	\$7,296	\$8,622	\$3,980	Oshkosh
	Holy Family Memorial Center	\$9,949	\$11,275	\$6,633	Manitowoc



Manitowoc County
Specific Procedure Incentive Network

Hip Replacement – Joint Replacement Surgery (Inpatient)

<u>Provider</u>	<u>Incentive</u>
Tier 1	\$1,500
Tier 2	\$ 250
Tier 3	\$ 0

		<u>Cost of Procedure</u>		<u>\$ Greater (than Tier 1 'High' price)</u>	<u>City</u>
	<u>Provider</u>	<u>Low</u>	<u>High</u>		
Tier 1:	Berlin Memorial Hospital	\$15,906	\$20,448	n/a	Berlin
	Theda Clark Regional Medical Center	\$15,906	\$20,448	n/a	Neenah
	Appleton Medical Center	\$15,906	\$20,448	n/a	Appleton
Tier 2:	Bellin Memorial Hospital	\$20,450	\$24,993	\$4,545	Green Bay
	Aurora Medical Center Oshkosh	\$20,450	\$24,993	\$4,545	Oshkosh
	Aurora Medical Center Manitowoc	\$20,450	\$24,993	\$4,545	Two Rivers
Tier 3:	Holy Family Memorial Center	\$38,623	\$43,164	\$18,173	Manitowoc

Manitowoc County
Specific Procedure Incentive Network

Knee – Cartilage Repair using Arthroscopic (Outpatient)

<u>Provider</u>	<u>Incentive</u>
Tier 1	\$350
Tier 2	\$350
Tier 3	\$ 0

		<u>Cost of Procedure</u>			
	<u>Provider</u>	<u>Low</u>	<u>High</u>	<u>\$ Greater (than Tier 1 'High' price)</u>	<u>City</u>
Tier 1:	Arthroscopic & Ambulatory Surgery	\$2,875	\$4,025	n/a	Oshkosh
	Ambulatory Surgical Center	\$2,875	\$4,025	n/a	Appleton
Tier 2:	St Vincent Hospital	\$4,025	\$5,175	\$1,150	Green Bay
	Aurora Medical Center Oshkosh	\$4,025	\$5,175	\$1,150	Oshkosh
Tier 3:	St. Mary's Hospital Medical Center	\$5,175	\$6,325	\$2,300	Green Bay
	Theda Clark Regional Medical	\$5,175	\$6,325	\$2,300	Neenah
	Appleton Medical Center	\$5,175	\$6,325	\$2,300	Appleton
	Fond du Lac Surgery Center LLC	\$5,175	\$6,325	\$2,300	Fond du Lac
	Aurora Medical Center Manitowoc	\$5,175	\$6,325	\$2,300	Two Rivers
	Bellin Memorial Hospital	\$5,175	\$6,325	\$2,300	Green Bay
	Aurora BayCare Medical Center	\$6,325	\$7,475	\$3,450	Green Bay
	Bay Area Medical Center	\$6,325	\$7,475	\$3,450	Marinette
	Holy Family Memorial Medical Center	\$7,475	\$8,625	\$4,600	Manitowoc



Manitowoc County
Specific Procedure Incentive Network

Knee Replacement – Joint Replacement Surgery (Inpatient)

<u>Provider</u>	<u>Incentive</u>
Tier 1	\$1,500
Tier 2	\$ 800
Tier 3	\$ 0

		<u>Cost of Procedure</u>			
	<u>Provider</u>	<u>Low</u>	<u>High</u>	<u>\$ Greater (than Tier 1 'High' price)</u>	<u>City</u>
Tier 1:	Berlin Memorial Hospital	\$17,512	\$22,513	n/a	Berlin
	New London Family Medical Center	\$17,512	\$22,513	n/a	New London
	St Agnes Hospital	\$17,512	\$22,513	n/a	Fond du Lac
	Theda Clark Regional Medical Center	\$17,512	\$22,513	n/a	Neenah
	Appleton Medical Center	\$17,512	\$22,513	n/a	Appleton
	Bellin Memorial Hospital	\$17,512	\$22,513	n/a	Green Bay
Tier 2:	Aurora Medical Center Oshkosh	\$22,516	\$27,517	\$5,004	Oshkosh
Tier 3:	Aurora BayCare Medical Center	\$27,519	\$32,520	\$10,007	Green Bay
	St. Mary's Hospital Medical Center	\$27,519	\$32,520	\$10,007	Green Bay
	St. Vincent Hospital	\$27,519	\$32,520	\$10,007	Green Bay
	Holy Family Memorial	\$32,523	\$37,524	\$15,011	Manitowoc
	Bay Area Medical Center	\$32,523	\$37,524	\$15,011	Marinette



Manitowoc County
Specific Procedure Incentive Network

Leg - Diagnostic - MRI Lower Limb (Outpatient)

<u>Provider</u>	<u>Incentive</u>
Tier 1	\$350
Tier 2	\$200
Tier 3	\$ 0

	<u>Provider</u>	<u>Cost of Procedure</u>		<u>\$ Greater (than Tier 1 'High' price)</u>	<u>City</u>
		<u>Low</u>	<u>High</u>		
Tier 1:	NE Wisconsin MRI Center	\$734	\$1,027	n/a	Green Bay
Tier 2:	Aurora BayCare Medical Center	\$1,321	\$1,614	\$587	Green Bay
	Appleton Medical Center	\$1,321	\$1,614	\$587	Appleton
Tier 3:	Holy Family Memorial Center	\$1,614	\$1,908	\$881	Manitowoc
	Theda Clark Regional Medical Center	\$1,614	\$1,908	\$881	Neenah
	Bay Area Medical Center	\$1,908	\$2,201	\$1,174	Marinette

Manitowoc County Specific Procedure Incentive Network

Pelvis - Diagnostic - CT Scan Pelvis (Outpatient)

<u>Provider</u>	<u>Incentive</u>
Tier 1	\$300
Tier 2	\$ 0
Tier 3	\$ 0

		<u>Cost of Procedure</u>		<u>\$ Greater (than Tier 1 'High' price)</u>	<u>City</u>
<u>Provider</u>		<u>Low</u>	<u>High</u>		
Tier 1:	Aurora Medical Center Manitowoc	\$514	\$720	n/a	Two Rivers
Tier 2:	Theda Clark Regional Medical Center	\$720	\$926	\$206	Neenah
	St Mary's Hospital Medical Center	\$720	\$926	\$206	Green Bay
	Appleton Medical Center	\$720	\$926	\$206	Appleton
Tier 3:	Aurora Medical Center Oshkosh	\$926	\$1,132	\$412	Oshkosh
	Riverside Medical Center	\$926	\$1,132	\$412	Waupaca
	St. Vincent Hospital	\$926	\$1,132	\$412	Green Bay
	New London Family Medical Center	\$926	\$1,132	\$412	New London
	CT Imaging LLC	\$926	\$1,132	\$412	Green Bay
	Aurora BayCare Medical Center	\$926	\$1,132	\$412	Green Bay
	Shawano Medical Center	\$926	\$1,132	\$412	Shawano
	Radiology Assoc. of Fox Valley	\$926	\$1,132	\$412	Appleton
	St. Agnes Hospital	\$926	\$1,132	\$412	Green Bay
	Bay Area Medical Center	\$926	\$1,132	\$412	Marinette
	Holy Family Memorial Medical Center	\$1,132	\$1,337	\$617	Manitowoc
	Berlin Memorial Hospital	\$1,132	\$1,337	\$617	Berlin
	Door County Memorial Hospital	\$1,132	\$1,337	\$617	Sturgeon Bay
	Ripon Medical Center	\$1,543	\$1,749	\$1,209	Ripon



Community Memorial Hospital \$1,543 \$1,749 \$1,209 Oconto Falls

Manitowoc County
Specific Procedure Incentive Network

Shoulder - Rotator Cuff Repair using Arthroscopy (Outpatient)

<u>Provider</u>	<u>Incentive</u>
Tier 1	\$1,500
Tier 2	\$ 800
Tier 3	\$ 0

	<u>Provider</u>	<u>Cost of Procedure</u>		<u>\$ Greater (than Tier 1 'High' price)</u>	<u>City</u>
		<u>Low</u>	<u>High</u>		
Tier 1:	Arthroscopic & Ambulatory Surg	\$6,894	\$8,863	n/a	Oshkosh
	Ambulatory Surgical Center	\$6,894	\$8,863	n/a	Appleton
Tier 2:	Bellin Memorial Hospital	\$12,804	\$14,772	\$5,910	Green Bay
Tier 3:	Holy Family Memorial Center	\$26,587	\$28,556	\$19,693	Manitowoc



Manitowoc County
Specific Procedure Incentive Network

Shoulder - Surgical examination using Arthroscopy (Outpatient)

<u>Provider</u>	<u>Incentive</u>
Tier 1	\$500
Tier 2	\$ 0

		<u>Cost of Procedure</u>			
	<u>Provider</u>	<u>Low</u>	<u>High</u>	<u>\$ Greater (than Tier 1 'High' price)</u>	<u>City</u>
Tier 1:	Ambulatory Surgical Center	\$3,833	\$5,366	n/a	Appleton
Tier 2:	Bellin Memorial Hospital	\$8,433	\$9,966	\$4,600	Green Bay
	St Mary's Hospital Medical Center	\$8,433	\$9,966	\$4,600	Green Bay



Manitowoc County
Specific Procedure Incentive Network

**Stomach - Upper Digestive Tract examination using Endoscopy
(Outpatient)**

<u>Provider</u>	<u>Incentive</u>
Tier 1	\$350
Tier 2	\$ 0
Tier 3	\$ 0

	<u>Provider</u>	<u>Cost of Procedure</u>		<u>\$ Greater (than Tier 1 'High' price)</u>	<u>City</u>
		<u>Low</u>	<u>High</u>		
Tier 1:	Aurora Health Center	\$1,206	\$1,550	n/a	Various locations
	Theda Clark Regional Medical Center	\$1,206	\$1,550	n/a	Neenah
	Appleton Medical Center	\$1,206	\$1,550	n/a	Appleton
	Aurora Medical Center Oshkosh	\$1,206	\$1,550	n/a	Oshkosh
Tier 2:	Bellin Memorial Hospital	\$1,550	\$1,895	\$344	Green Bay
Tier 3:	St. Mary's Hospital Medical Center	\$1,895	\$2,239	\$689	Green Bay
	St. Agnes Hospital	\$1,895	\$2,239	\$689	Fond du Lac
	Bay Area Medical Center	\$2,239	\$2,584	\$1,034	Marinette

Manitowoc County
Specific Procedure Incentive Network

Stomach - Upper Digestive Tract examination using Endoscopy with Biopsy (Outpatient)

<u>Provider</u>	<u>Incentive</u>
Tier 1	\$300
Tier 2	\$ 0
Tier 3	\$ 0

	<u>Provider</u>	<u>Cost of Procedure</u>		<u>\$ Greater (than Tier 1 'High' price)</u>	<u>City</u>
		<u>Low</u>	<u>High</u>		
Tier 1:	Aurora Health Center	\$1,172	\$1,641	n/a	Various locations
Tier 2:	Appleton Medical Center	\$1,641	\$2,110	\$469	Appleton
	Theda Clark Regional Medical Center	\$1,641	\$2,110	\$469	Neenah
	Aurora Medical Center Oshkosh	\$1,641	\$2,110	\$469	Oshkosh
Tier 3:	Bellin Memorial Hospital	\$2,110	\$2,579	\$938	Green Bay
	St. Vincent Hospital	\$2,110	\$2,579	\$938	Green Bay
	Aurora Medical Center Manitowoc	\$2,110	\$2,579	\$938	Two Rivers
	Bay Area Medical Center	\$2,110	\$2,579	\$938	Marinette
	Aurora BayCare Medical Center	\$2,110	\$2,579	\$938	Green Bay
	St. Agnes Hospital	\$2,110	\$2,579	\$938	Fond du Lac
	St. Mary's Hospital Medical Center	\$2,110	\$2,579	\$938	Green Bay
	Berlin Memorial Hospital	\$2,110	\$2,579	\$938	Berlin
	Ripon Medical Center	\$3,517	\$3,986	\$1,876	Ripon

Manitowoc County
Specific Procedure Incentive Network

Tonsils and Adenoids - Removal, under age 12 (Outpatient)

<u>Provider</u>	<u>Incentive</u>
Tier 1	\$500
Tier 2	\$300
Tier 3	\$ 0

		<u>Cost of Procedure</u>			
<u>Provider</u>		<u>Low</u>	<u>High</u>	<u>\$ Greater (than Tier 1 'High' price)</u>	<u>City</u>
Tier 1:	Aurora Medical Center Oshkosh	\$2,827	\$3,635	n/a	Oshkosh
	Aurora Health Center	\$2,827	\$3,635	n/a	Various locations
	Appleton Medical Center	\$2,827	\$3,635	n/a	Appleton
	Theda Clark Regional Medical Center	\$2,827	\$3,635	n/a	Neenah
	St Vincent Hospital	\$2,827	\$3,635	n/a	Green Bay
	Aurora BayCare Medical Center	\$2,827	\$3,635	n/a	Green Bay
Tier 2:	Fond du Lac Surgery Center LLC	\$3,635	\$4,442	\$807	Fond du Lac
	Aurora Medical Center Manitowoc	\$3,635	\$4,442	\$807	Two Rivers
Tier 3:	Bellin Memorial Hospital	\$4,443	\$5,250	\$1,615	Green Bay
	Bay Area Medical Center	\$4,443	\$5,250	\$1,615	Marinette
	Holy Family Memorial Medical Center	\$4,443	\$5,250	\$1,615	Manitowoc
	Community Memorial Hospital	\$6,058	\$6,866	\$2,423	Oconto Falls

Glossary

Anthem Care Comparison:	A tool created by Anthem to measure cost and quality data and provide “transparency” in health care.
Anthem Customer Service:	1-888-224-4902 or www.anthem.com
Anthem:	Anthem is Manitowoc County's health claims administrator. They administer the Manitowoc County health insurance coverage and process/pay health care claims.
Claim:	A claim is created every time you visit a provider for care.
Consumer Driven Health Plan (CDHP):	Health insurance programs and plans that are intended to make consumers more informed about their health. A CDHP allows employees greater control over their health care dollars and offer incentives and tools to manage both health care decisions and costs
CPT Code:	Current Procedural Terminology (CPT) codes are maintained by the American Medical Association. CPT codes describe medical, surgical, and diagnostic services and are designed to provide information about medical services and procedures among physicians and insurance companies.
Date of Service:	The actual day you see your provider and incur a claim.
Episode of Care:	Services provided as part of the procedure. Services may include but are not limited to the following: lab, x-ray, physician charges and hospital charges.
HR Connection:	www.hrconnection.com is the online resource for Manitowoc County employees.
In network:	Providers that agree to the fees Anthem is willing to provide for these services are considered “in network”. Your health insurance plan provides greater coverage if you choose to see providers that are in network with Anthem.
Patient Care:	An advocacy service that may be able to assist you in determining if your claim is one of the procedures in the SPIN program. In addition, they provide employees with a full range of services such as assistance with a claim problem, determining if a provider is in-network and questions about a procedure. They are available at: www.patientcare4u.com or by calling 866-253-2273.
Provider:	Providers may include your primary care physician, specialists, emergency care professionals, urgent care clinics, hospitals and facilities.
SPIN:	The “Specific Procedure Incentive Network” was designed to provide information on the cost of health care and to provide cash incentives for employees that utilize a more cost efficient provider for specific health care procedures.
Transparency:	Provide cost and quality information in a readily accessible understandable format to assist in making health care decisions.





Manitowoc County

SPIN Claim Form

Submit this claim form of to the Personnel Department within 60 days of the date the procedure was performed in order to obtain your SPIN incentive as documented in this booklet. The SPIN claim form can also be found online at hrconnection.com (under Benefit Plans – SPIN Program).

REMEMBER

Share the information in this booklet with your health care provider prior to receiving services to **be sure that the procedure described in this booklet is truly the procedure you will be receiving.**

If the information below is not complete, Manitowoc County will not provide the incentive. Incentive payments will be issued on the employee's regularly scheduled paycheck.

Physician Certification (to be completed by treating physician)

Patient Name:	
Name of Procedure Performed:	
Date of the Procedure:	
Facility Name where procedure was performed:	
Physician name:	
Signature of Physician or Representative:	Date:

Employee Certification (to be completed by employee)

Employee Name:	
Patient Name:	
Patient is (check appropriate box): <input type="checkbox"/> Employee <input type="checkbox"/> Spouse <input type="checkbox"/> Dependent Child	
Procedure Name:	
Name of SPIN Facility:	Date of Service:
Signature of Employee:	Date:

Employer Certification (to be completed by Personnel Department)

Date Form Received:	Incentive Amount:
Date Payroll Notified:	Payroll Check Date:
Personnel Approval:	
Notes:	

